

Austin-Bergstrom International Airport

Aviation Activity Report

	09/2008	09/2007	Percent Change	01/2008 - 09/2008	01/2007 - 09/2007	Percent Change
<u>Passenger Activity</u>						
Domestic Enplaned Revenue	313,428	334,643	-6.34	3,242,826	3,127,863	3.68
Domestic Deplaned Revenue	315,645	335,666	-5.96	3,243,631	3,141,802	3.24
Domestic Through Revenue	12,001	14,729	-18.52	148,619	166,985	-11.00
International Enplaned Revenue	861	749	14.95	9,452	10,231	-7.61
International Deplaned Revenue	932	833	11.88	9,767	10,523	-7.18
International Through Revenue	0	0	0.00	0	0	0.00
Domestic Enplaned Non-Revenue	8,613	9,238	-6.77	92,129	94,185	-2.18
Domestic Deplaned Non-Revenue	8,011	9,003	-11.02	89,120	85,767	3.91
Domestic Through Non-Revenue	0	0	0.00	0	9	-100.00
International Enplaned Non-Revenue	26	0	0.00	149	0	0.00
International Deplaned Non-Revenue	24	0	0.00	171	0	0.00
International Through Non-Revenue	0	0	0.00	0	0	0.00
South Terminal-Intl Enplaned Revenue	2,076	0	0.00	25,436	0	0.00
South Terminal-Intl Deplaned Revenue	2,466	0	0.00	25,647	0	0.00
South Terminal-Intl Through Revenue	0	0	0.00	0	0	0.00
South Terminal-Intl Enplaned Non-Revenue	0	0	0.00	0	0	0.00
South Terminal-Intl Deplaned Non-Revenue	0	0	0.00	0	0	0.00
South Terminal-Intl Through Non-Revenue	0	0	0.00	0	0	0.00
Passenger Totals	664,083	704,861	-5.79	6,886,947	6,637,365	3.76

CURRENT PASSENGER RECORD = 869,308

RECORD SET = JUNE 2008

Aircraft Operations

Air Carrier	8,167	8,982	-9.07	80,579	76,907	4.77
Commuter & Air Taxi	1,747	2,858	-38.87	22,347	21,765	2.67
Military	292	501	-41.72	3,958	4,308	-8.12
General Aviation						
Itinerant	6,148	6,911	-11.04	53,718	51,632	4.04
Local	161	322	-50.00	2,112	3,191	-33.81
Total G.A.	6,309	7,233	-12.77	55,830	54,823	1.84
Total Operations	16,515	19,574	-15.63	162,714	157,803	3.11

Austin-Bergstrom International Airport

Aviation Activity Report

	09/2008	09/2007	Percent Change	01/2008 - 09/2008	01/2007 - 09/2007	Percent Change
<u>Cargo Activity</u>						
Mail						
Domestic Enplaned Mail	163,682	146,716	11.56	1,671,068	1,119,410	49.28
Domestic Deplaned Mail	408,731	298,796	36.79	3,280,810	2,124,338	54.44
International Enplaned Mail	0	0	0.00	0	15	-100.00
International Deplaned Mail	0	0	0.00	0	15	-100.00
South Terminal-Intl Enplaned Mail	0	0	0.00	0	0	0.00
South Terminal-Intl Deplaned Mail	0	0	0.00	0	0	0.00
Mail Totals	572,413	445,512	28.48	4,951,878	3,243,778	52.66
Cargo						
Domestic Enplaned Cargo	7,705,791	8,499,271	-9.34	73,133,080	69,608,137	5.06
Domestic Deplaned Cargo	6,194,546	7,310,475	-15.26	58,588,781	61,457,887	-4.67
International Enplaned Cargo	304,820	382,443	-20.30	3,510,037	3,640,627	-3.59
International Deplaned Cargo	0	0	0.00	0	0	0.00
South Terminal-Intl Enplaned Cargo	0	0	0.00	0	0	0.00
South Terminal-Intl Deplaned Cargo	0	0	0.00	0	0	0.00
Cargo Totals	14,205,157	16,192,189	-12.27	135,231,898	134,706,651	0.39
Belly Freight						
Domestic Enplaned Belly Freight	832,189	1,095,867	-24.06	8,587,296	10,878,948	-21.07
Domestic Deplaned Belly Freight	801,715	708,363	13.18	7,256,649	6,578,789	10.30
International Enplaned Belly Freight	0	0	0.00	0	0	0.00
International Deplaned Belly Freight	0	0	0.00	0	0	0.00
South Terminal-Intl Enplaned Belly Frt	0	0	0.00	0	0	0.00
South Terminal-Intl Deplaned Belly Frt	0	0	0.00	0	0	0.00
Belly Freight Totals	1,633,904	1,804,230	-9.44	15,843,945	17,457,737	-9.24
Cargo Totals (Mail, Cargo, Belly Freight)	16,411,474	18,441,931	-11.01	156,027,721	155,408,166	0.40

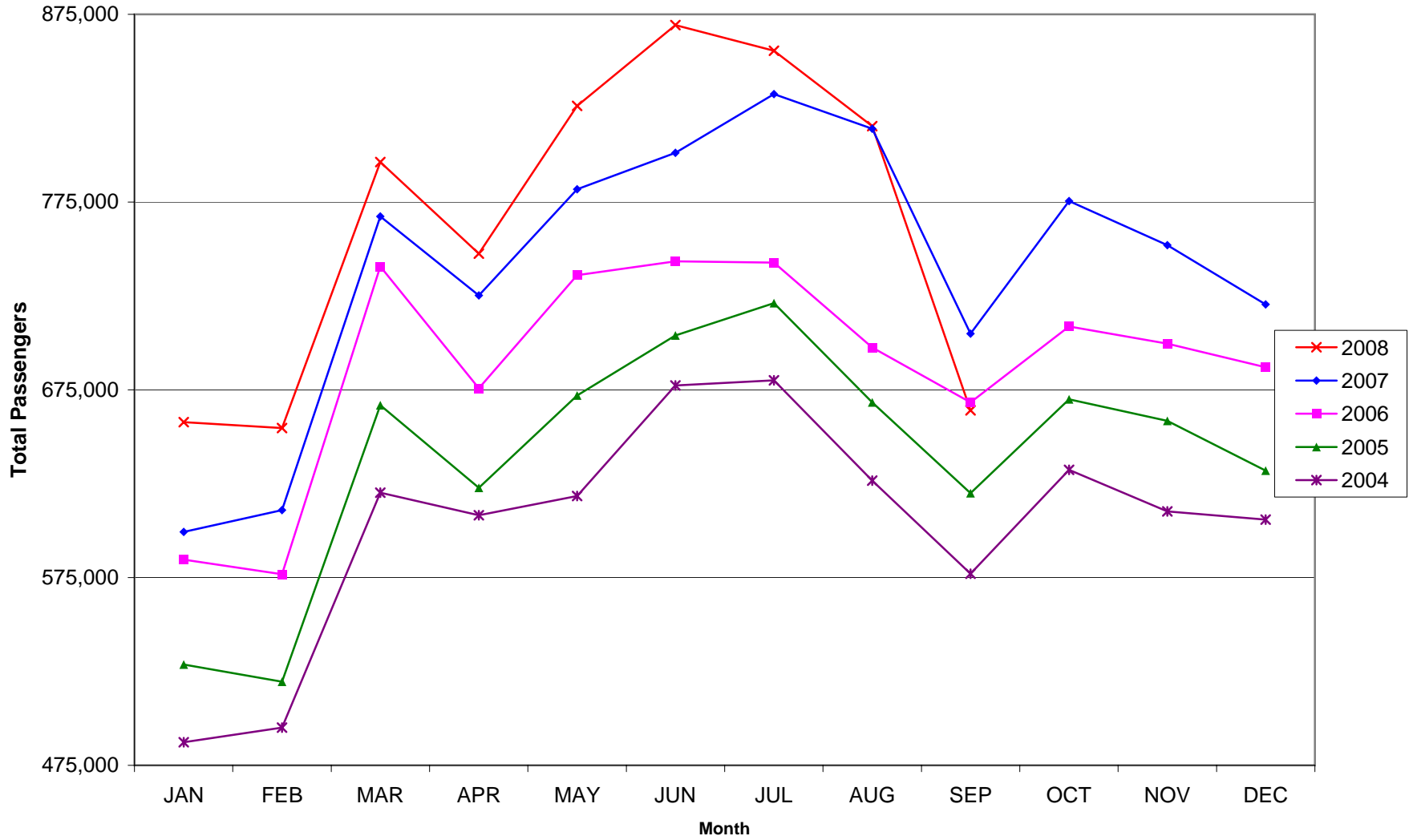
CURRENT CARGO RECORD = 40,215,518

RECORD SET = MARCH 2001

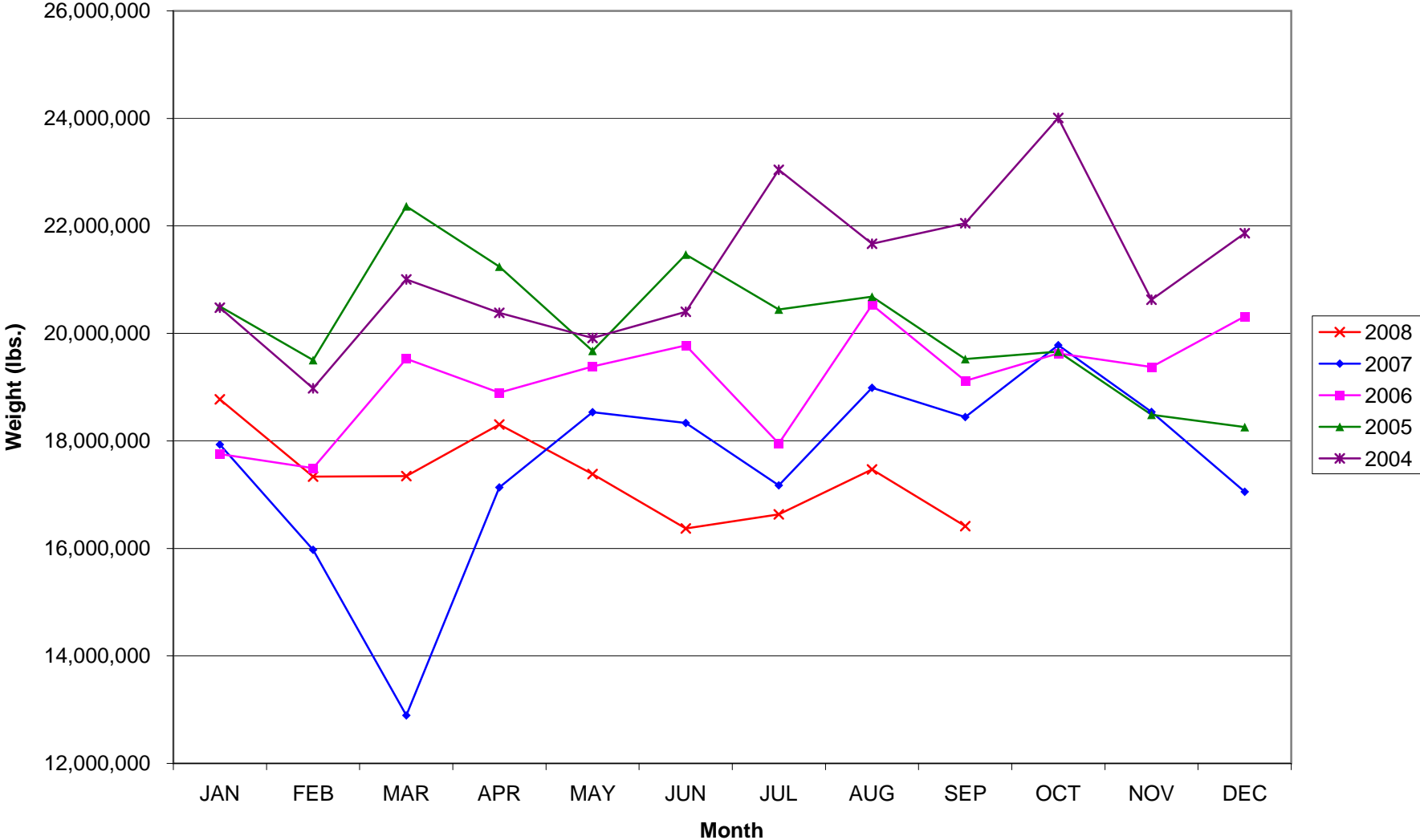
AUS – Airline Codes
September 2008

<u>Code</u>	<u>Carrier</u>
VB	Aeroenlaces Nacionales S.A. de C.V./vivaAerobus
AA	American Airlines, Inc.
EV	Atlantic Southeast Airlines, Inc. (Delta Connection)
XP	Casino Express Airways
RP	Chautauqua Airlines, Inc.
CO	Continental Airlines
DL	Delta Airlines
XE	Express Jet Airlines, Inc.
F9	Frontier Airlines DIP
QK	Jazz Air LP
B6	JetBlue Airways Corp.
YV	Mesa Airlines, Inc.
GL	Miami Air International Inc.
NW	Northwest Airlines
9E	Pinnacle Airlines, Inc. (Northwest AirlinK & Delta Connection)
S5	Shuttle America Corp. (Delta Connection)
OO	SkyWest Airlines, Inc.
WN	Southwest Airlines
AX	Trans States Airlines, Inc.
UA	United Airlines, Inc. (GoJet Airlines dba United Express)
US	US Airways Group, Inc.

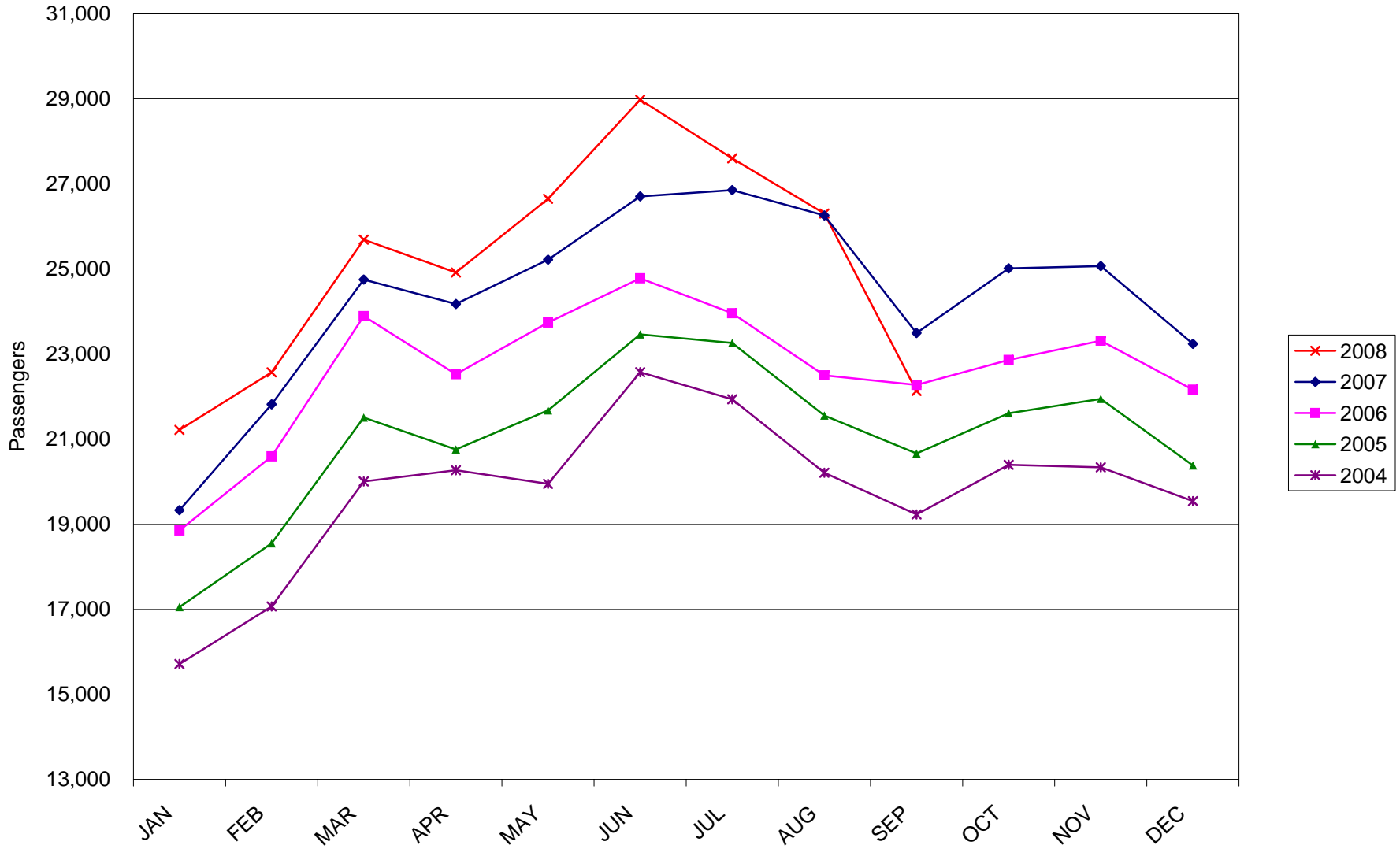
AUSTIN PASSENGER TRAFFIC



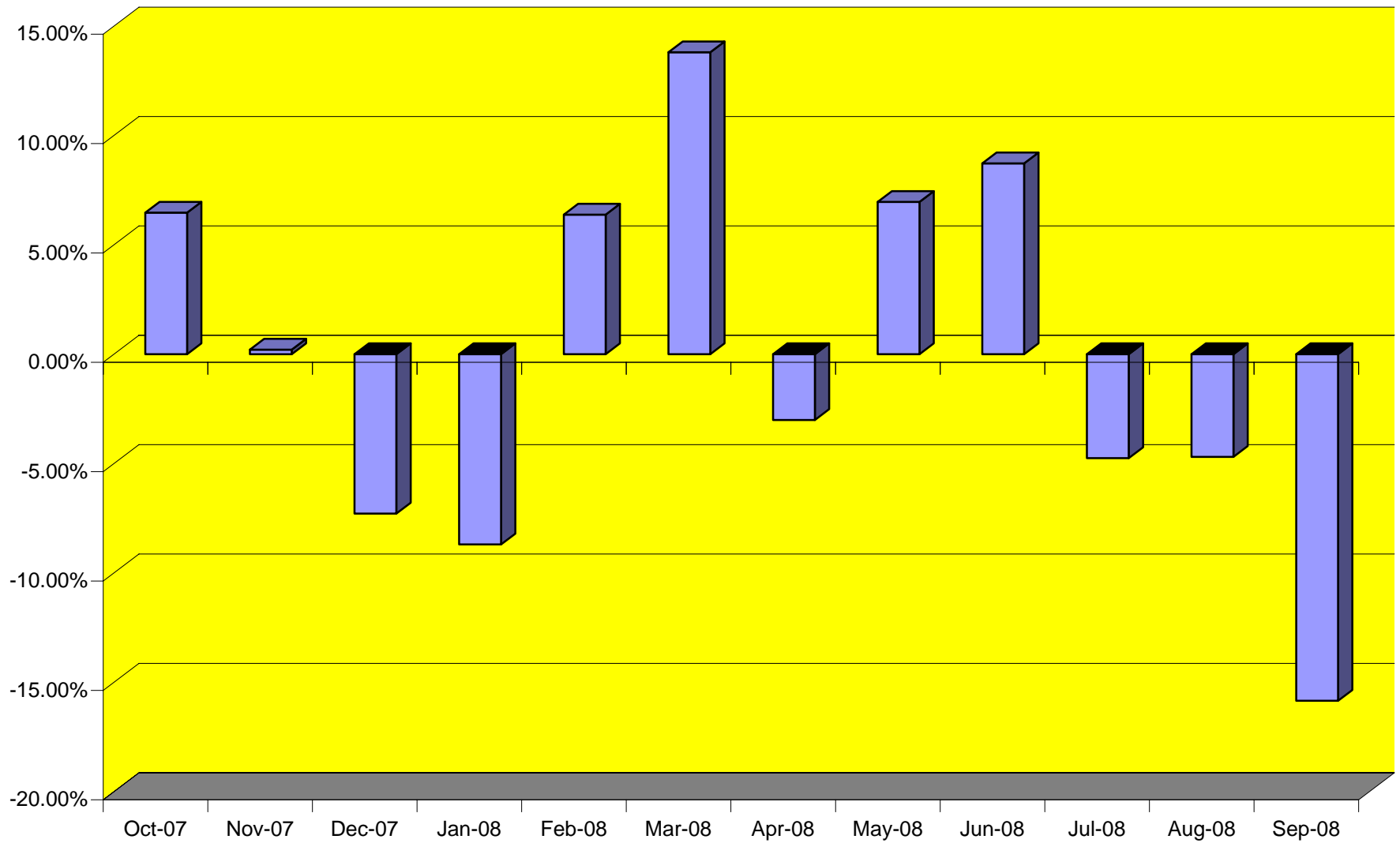
TOTAL CARGO POUNDAGE - AUSTIN, TEXAS



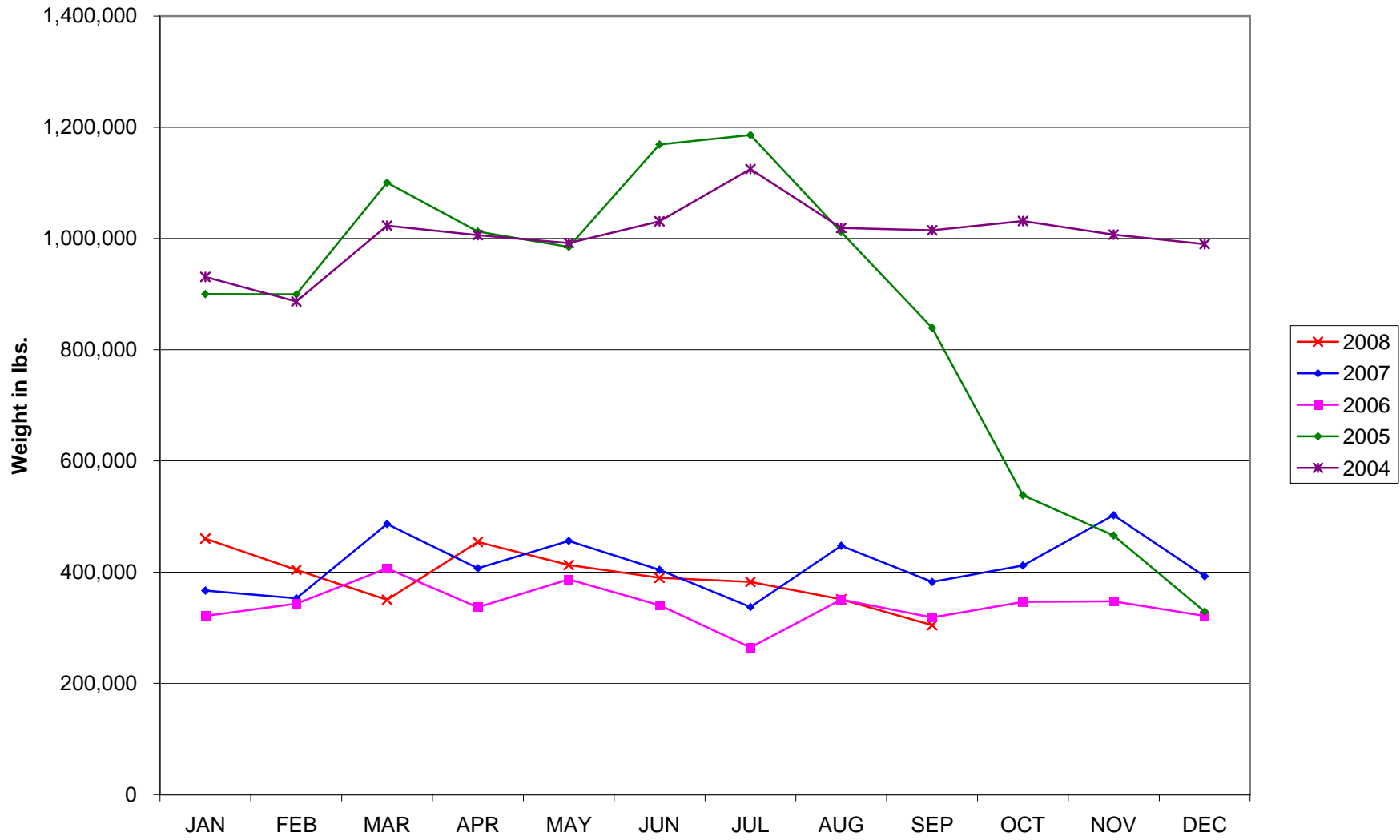
Average Daily Passengers



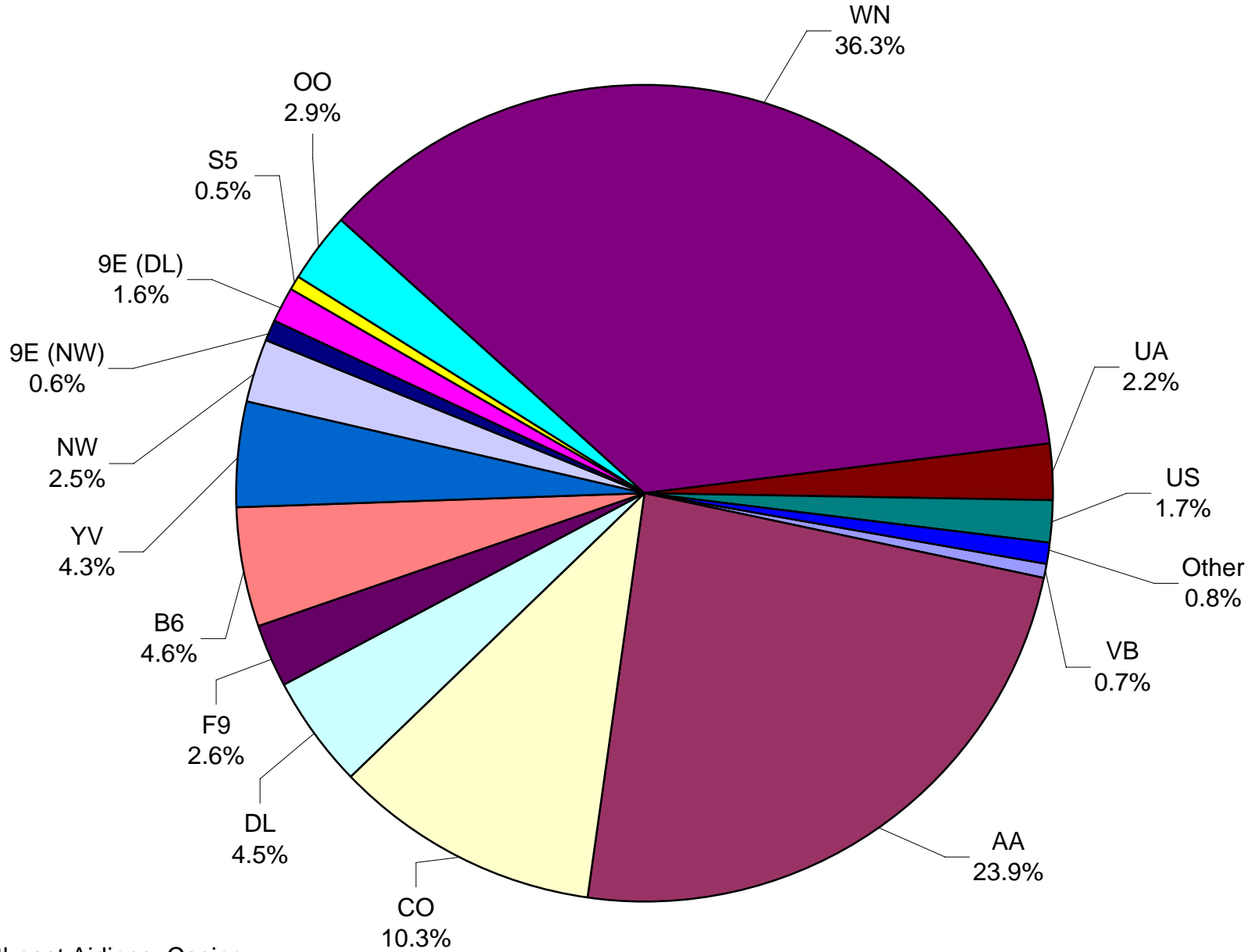
Monthly % Change in Average Daily Passengers



History of International Air Cargo



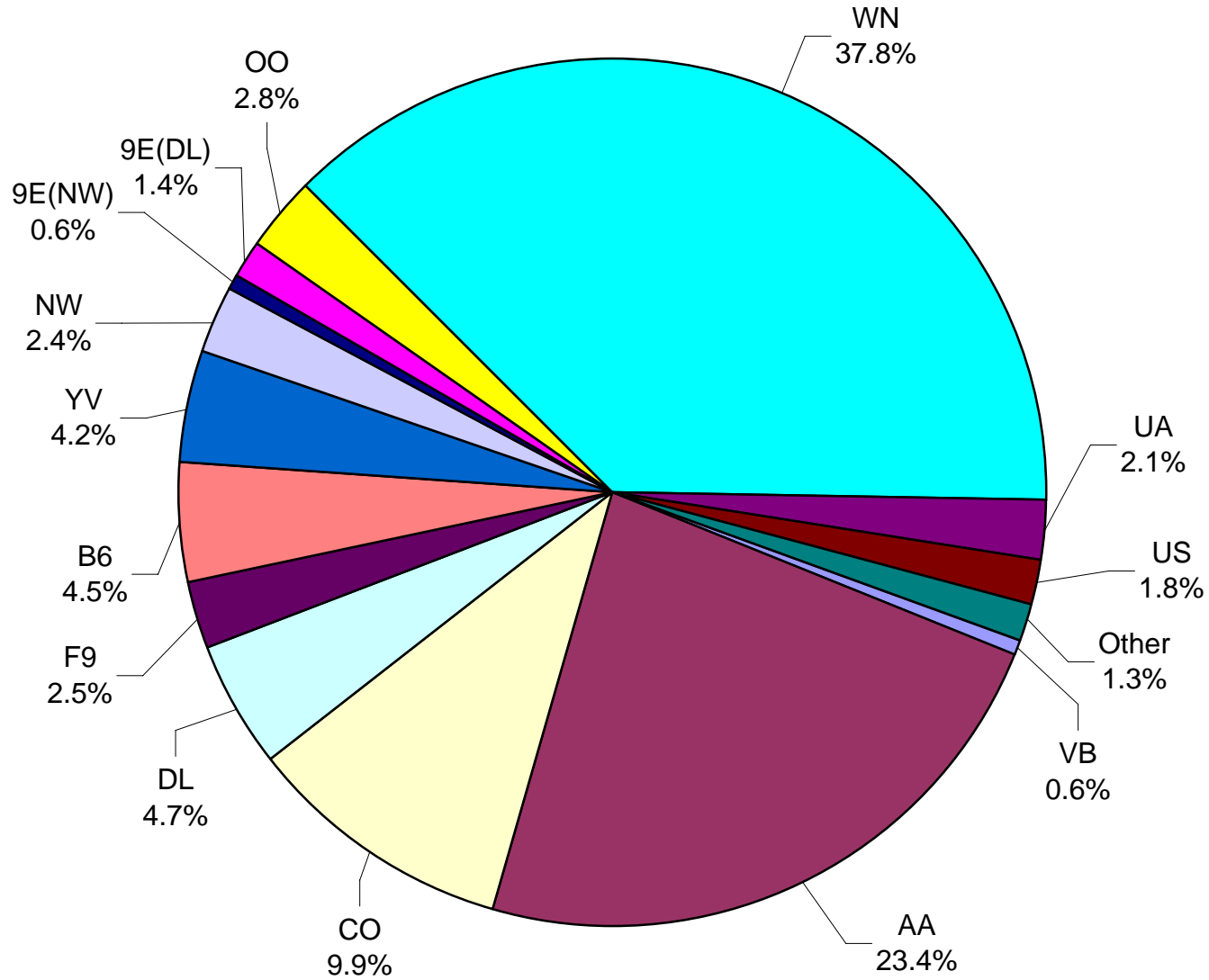
**Total Passengers
September 2008**



Other = Atlantic Southeast Airlines, Casino Express Airways, Chautauqua Airlines, Express Jet Airlines, Jazz Air L.P., Miami Air International and Trans States Airlines

Note: United Airlines percentage includes sub-contractors.

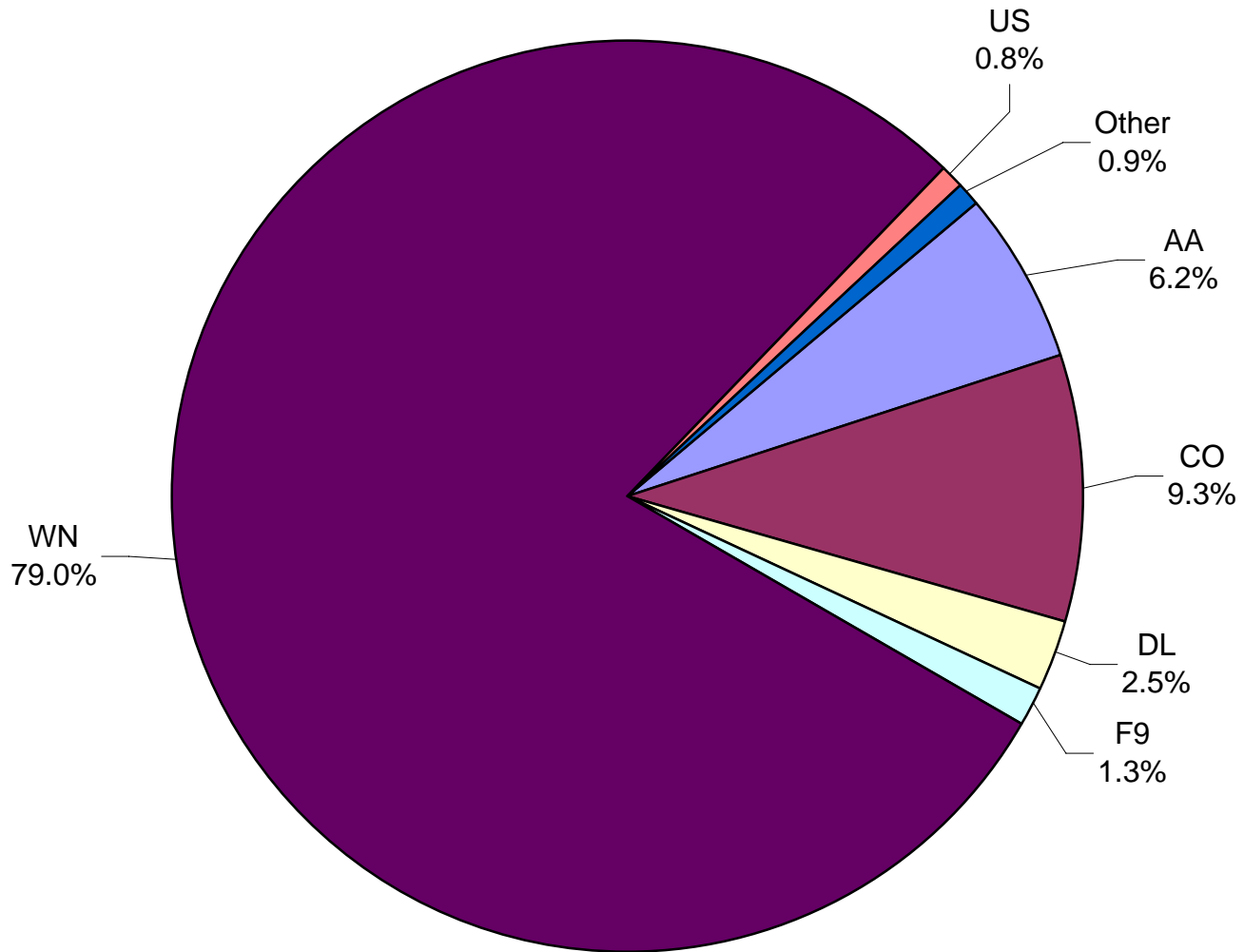
**All Passenger Carriers
Enplaned Revenue Passengers
September 2008**



Other = Atlantic Southeast Airlines, Inc (Delta Connection), Casino Express Airways, Chautauqua Airlines Inc., Express Jet Airlines, Jazz Air LP, Miami Air International, Shuttle America Corp (Delta Connection) and Trans States Airlines Inc.

Note: United Airlines percentage includes sub-contractors.

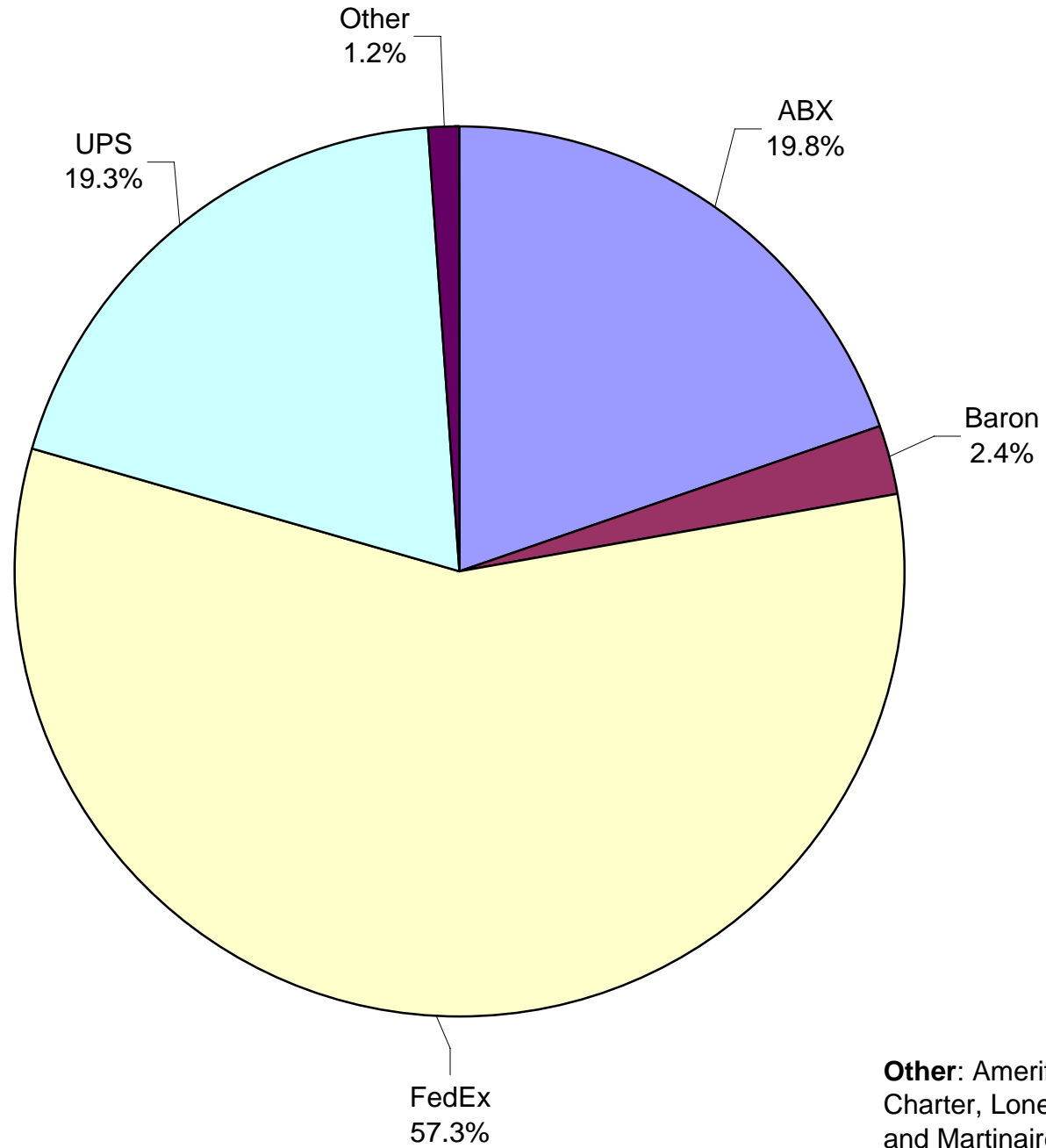
**AUS Belly Freight Market Shares
September 2008**



Other = Mesa Airlines, Inc., Northwest Airlines, Pinnacle Airlines, Inc.(NW & DL) and United Airlines, Inc.

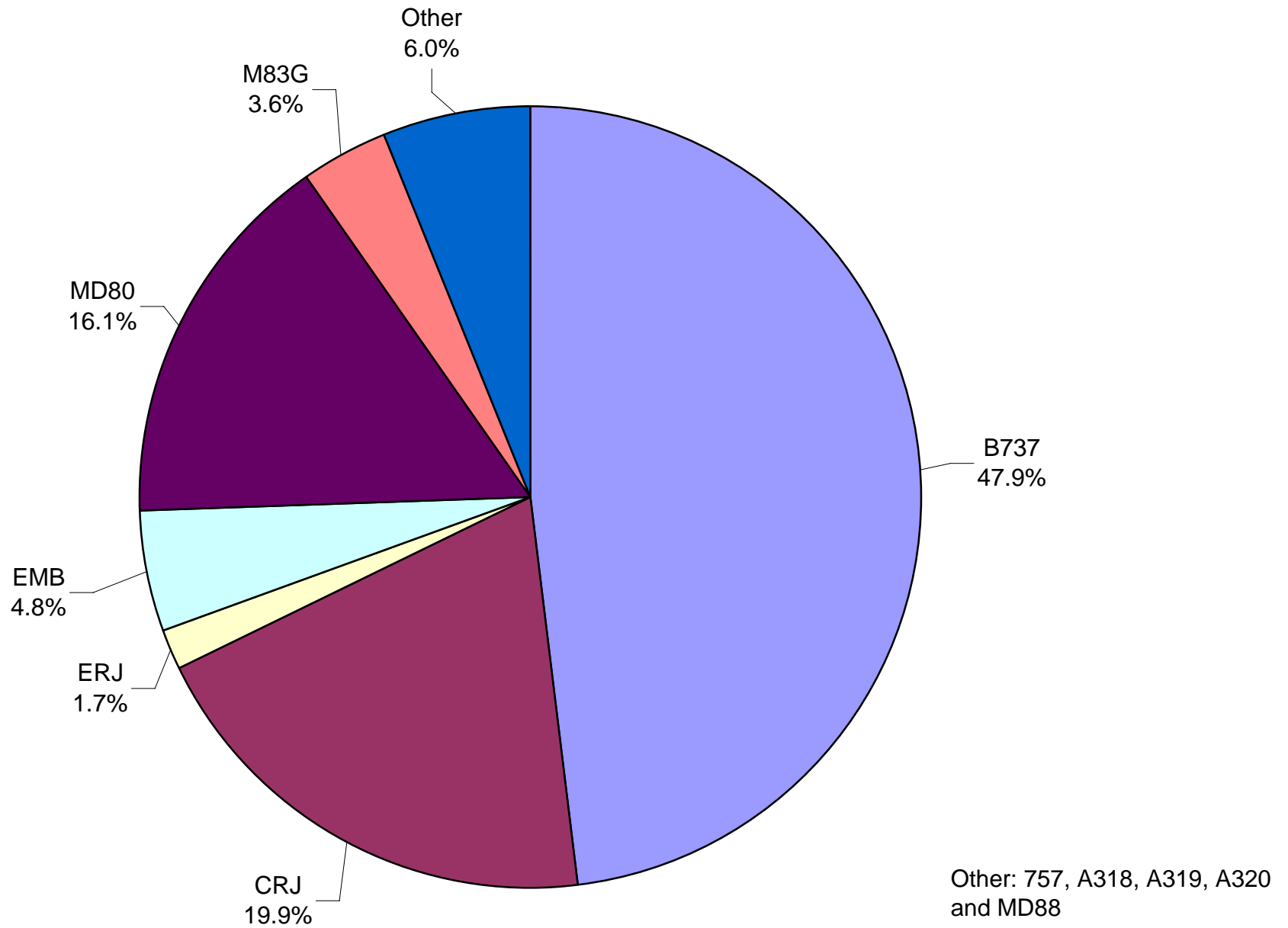
Note: United Airlines percentage includes sub-contractors.

**Air Cargo Market Shares
September 2008**

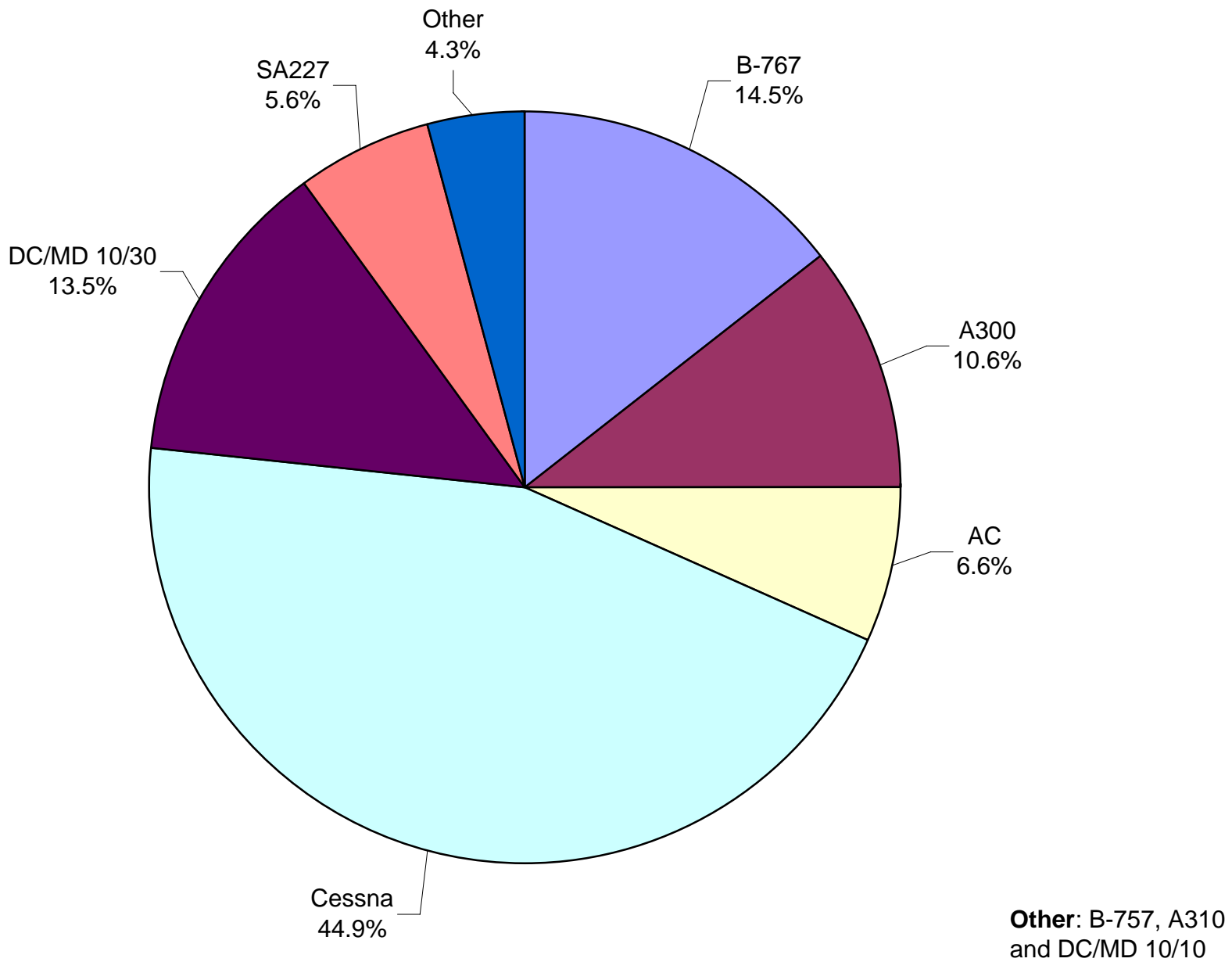


Other: Ameriflight, Ameristarjet Charter, Lone Star Overnight L.P. and Martinaire Partners L.P.

**AUS Scheduled Passenger Aircraft Fleet Mix
September 2008**



**AUS Scheduled Cargo Aircraft Fleet Mix
September 2008**



Austin-Bergstrom International Airport

PAX Detail Report - September, 2008

Company	09/2008	09/2007	Period		YTD 2008	YTD 2007	YTD		2008 Share	2007 Share	Share Diff
			Difference	Change			Difference	Change			
Aero Mexico Airlines/Aerovias de Mexico, S.A. de C.V.	0	1,582	-1,582	-100.0	10,584	20,754	-10,170	-49.0	0.2	0.3	-0.2
Aeroenlaces Nacionales S.A. DE C.V./vivaAerobus	4,542	0	4,542	0.0	48,206	0	48,206	0.0	0.7	0.0	0.7
Allegiant Air	0	279	-279	-100.0	2,723	887	1,836	207.0	0.0	0.0	0.0
American Airlines, Inc	158,692	190,733	-32,041	-16.8	1,713,533	1,780,473	-66,940	-3.8	24.9	26.8	-1.9
Atlantic Southeast Airlines, Inc.	178	2,341	-2,163	-92.4	45,046	32,697	12,349	37.8	0.7	0.5	0.2
Casino Express Airways	288	0	288	0.0	1,635	1,184	451	38.1	0.0	0.0	0.0
Chautauqua Airlines Inc.	131	0	131	0.0	15,985	68	15,917	23,407.4	0.2	0.0	0.2
Continental Airlines	68,355	79,146	-10,791	-13.6	727,539	769,180	-41,641	-5.4	10.6	11.6	-1.0
Delta Airlines	29,778	33,836	-4,058	-12.0	347,471	349,987	-2,516	-0.7	5.0	5.3	-0.2
Delta Airlines/Pinnacle	10,321	0	10,321	0.0	10,959	0	10,959	0.0	0.2	0.0	0.2
Express Jet Airlines, Inc.	99	22,506	-22,407	-99.6	126,849	108,356	18,493	17.1	1.8	1.6	0.2
Frontier Airlines DIP	17,214	0	17,214	0.0	114,224	0	114,224	0.0	1.7	0.0	1.7
Frontier Airlines, Inc. - Pre Bankruptcy	0	15,988	-15,988	-100.0	60,210	164,922	-104,712	-63.5	0.9	2.5	-1.6
GoJet Airlines d/b/a United Express	2,525	0	2,525	0.0	2,525	0	2,525	0.0	0.0	0.0	0.0
Grand Holdings, Inc DBA Champion Air	0	0	0	0.0	0	412	-412	-100.0	0.0	0.0	0.0
JAZZ Air LP	1,843	0	1,843	0.0	11,832	0	11,832	0.0	0.2	0.0	0.2
JetBlue Airways Corporation	30,872	19,607	11,265	57.5	258,163	180,117	78,046	43.3	3.7	2.7	1.0
Mesa Airlines Inc.	28,633	21,369	7,264	34.0	226,051	193,070	32,981	17.1	3.3	2.9	0.4
Miami Air International Inc.	271	0	271	0.0	780	334	446	133.5	0.0	0.0	0.0
Midwest Airlines, Inc.	0	1,487	-1,487	-100.0	25,331	1,487	23,844	1,603.5	0.4	0.0	0.3
MN Airlines, LLC d/b/a Sun Country	0	0	0	0.0	102	0	102	0.0	0.0	0.0	0.0
Northwest Airlines	16,673	16,973	-300	-1.8	132,308	104,836	27,472	26.2	1.9	1.6	0.3
Pace Airlines	0	0	0	0.0	40	0	40	0.0	0.0	0.0	0.0
Pinnacle Airlines, Inc. dba Northwest Airlink	4,151	5,364	-1,213	-22.6	70,363	79,506	-9,143	-11.5	1.0	1.2	-0.2
Shuttle America Corporation	3,425	9,754	-6,329	-64.9	74,784	153,006	-78,222	-51.1	1.1	2.3	-1.2
SkyWest Airlines, Inc	19,121	18,683	438	2.3	153,139	136,882	16,257	11.9	2.2	2.1	0.2
Southwest Airlines	241,315	233,385	7,930	3.4	2,422,370	2,253,799	168,571	7.5	35.2	34.0	1.2
Trans States Airlines, Inc	2,197	0	2,197	0.0	13,884	20,439	-6,555	-32.1	0.2	0.3	-0.1
United Airlines, Inc.	12,072	15,751	-3,679	-23.4	148,360	159,264	-10,904	-6.8	2.2	2.4	-0.2
US Airways Group, Inc.	11,387	16,077	-4,690	-29.2	121,935	125,705	-3,770	-3.0	1.8	1.9	-0.1
USA Jet Airlines, Inc.	0	0	0	0.0	16	0	16	0.0	0.0	0.0	0.0
Report Totals	664,083	704,861	-40,778	-5.8%	6,886,947	6,637,365	249,582	3.8%			

Statistics Included in Report:

Domestic Passengers:

Enplaned Revenue, Deplaned Revenue, Through Revenue, Enplaned Non-Revenue, Deplaned Non-Revenue, Through Non-Revenue

International Passenger:

Enplaned Revenue, Deplaned Revenue, Through Revenue, Enplaned Non-Revenue, Deplaned Non-Revenue, Through Non-Revenue, South Terminal-Int'l Enplaned Revenue, South Terminal-Int'l Deplaned Revenue, South Terminal-Int'l Through Revenue, South Terminal-Int'l Enplaned Non-Revenue, South Terminal-Int'l Deplaned Non-Revenue, South Terminal-Int'l Through Non-Revenue

Austin-Bergstrom International Airport

Summary Landing Report

Landing Type: Total

Month	2008		2007		2006		% Change 2008 - 2007		% Change 2007 - 2006	
	Count	Weight	Count	Weight	Count	Weight	Count	Weight	Count	Weight
January	4,995	508,563,011	4,269	461,169,144	4,315	454,283,479	17.01%	10.28%	-1.07%	1.52%
February	4,707	477,510,902	4,084	433,092,352	4,039	431,045,336	15.25%	10.26%	1.11%	0.47%
March	5,057	511,086,453	4,693	498,304,509	4,753	489,791,305	7.76%	2.57%	-1.26%	1.74%
April	4,853	498,467,860	4,659	485,924,900	4,515	460,181,145	4.16%	2.58%	3.19%	5.59%
May	5,213	542,161,220	5,116	524,923,078	4,701	488,777,890	1.90%	3.28%	8.83%	7.40%
June	5,252	551,158,994	5,006	521,808,372	4,603	473,474,518	4.91%	5.62%	8.76%	10.21%
July	5,097	553,506,814	5,245	543,679,941	4,600	474,488,279	-2.82%	1.81%	14.02%	14.58%
August	5,006	550,514,204	5,453	559,884,838	4,700	487,717,207	-8.20%	-1.67%	16.02%	14.80%
September	4,261	481,994,314	5,107	513,882,056	4,465	468,401,170	-16.57%	-6.21%	14.38%	9.71%
October			5,373	539,788,979	4,744	495,772,214			13.26%	8.88%
November			5,053	515,341,963	4,494	476,125,637			12.44%	8.24%
December			4,997	511,272,858	4,598	484,969,931			8.68%	5.42%
Totals for Selected Period	44,441	4,674,963,772	43,632	4,542,669,190	40,691	4,228,160,329	1.85%	2.91%	7.23%	7.44%
Yearly Totals	44,441	4,674,963,772	59,055	6,109,072,990	54,527	5,685,028,111			8.30%	7.46%