

# Austin-Bergstrom International Airport

## Aviation Activity Report

	10/2008	10/2007	Percent Change	01/2008 - 10/2008	01/2007 - 10/2007	Percent Change
<b><u>Passenger Activity</u></b>						
Domestic Enplaned Revenue	355,782	366,370	-2.89	3,598,608	3,494,233	2.99
Domestic Deplaned Revenue	358,504	369,005	-2.85	3,602,135	3,510,807	2.60
Domestic Through Revenue	16,360	17,062	-4.11	164,979	184,047	-10.36
International Enplaned Revenue	1,162	980	18.57	10,614	11,211	-5.33
International Deplaned Revenue	1,190	945	25.93	10,957	11,468	-4.46
International Through Revenue	0	0	0.00	0	0	0.00
Domestic Enplaned Non-Revenue	9,866	9,915	-0.49	101,995	104,100	-2.02
Domestic Deplaned Non-Revenue	9,446	11,210	-15.74	98,566	96,977	1.64
Domestic Through Non-Revenue	0	0	0.00	0	9	-100.00
International Enplaned Non-Revenue	31	0	0.00	180	0	0.00
International Deplaned Non-Revenue	41	0	0.00	212	0	0.00
International Through Non-Revenue	0	0	0.00	0	0	0.00
South Terminal-Intl Enplaned Revenue	2,136	0	0.00	27,572	0	0.00
South Terminal-Intl Deplaned Revenue	2,035	0	0.00	27,682	0	0.00
South Terminal-Intl Through Revenue	0	0	0.00	0	0	0.00
South Terminal-Intl Enplaned Non-Revenue	0	0	0.00	0	0	0.00
South Terminal-Intl Deplaned Non-Revenue	0	0	0.00	0	0	0.00
South Terminal-Intl Through Non-Revenue	0	0	0.00	0	0	0.00
<b>Passenger Totals</b>	<b>756,553</b>	<b>775,487</b>	<b>-2.44</b>	<b>7,643,500</b>	<b>7,412,852</b>	<b>3.11</b>

CURRENT PASSENGER RECORD = 869,308

RECORD SET = JUNE 2008

### **Aircraft Operations**

Air Carrier	8,660	9,296	-6.84	89,239	86,203	3.52
Commuter & Air Taxi	1,635	3,058	-46.53	23,982	24,823	-3.39
Military	357	444	-19.59	4,315	4,752	-9.20
General Aviation						
Itinerant	6,190	7,163	-13.58	59,908	58,795	1.89
Local	162	213	-23.94	2,274	3,404	-33.20
Total G.A.	6,352	7,376	-13.88	62,182	62,199	-0.03
<b>Total Operations</b>	<b>17,004</b>	<b>20,174</b>	<b>-15.71</b>	<b>179,718</b>	<b>177,977</b>	<b>0.98</b>

# Austin-Bergstrom International Airport

## Aviation Activity Report

	10/2008	10/2007	Percent Change	01/2008 - 10/2008	01/2007 - 10/2007	Percent Change
<b><u>Cargo Activity</u></b>						
<b>Mail</b>						
Domestic Enplaned Mail	186,465	177,070	5.31	1,857,533	1,296,480	43.28
Domestic Deplaned Mail	518,668	309,921	67.35	3,799,478	2,434,259	56.08
International Enplaned Mail	0	0	0.00	0	15	-100.00
International Deplaned Mail	0	0	0.00	0	15	-100.00
South Terminal-Intl Enplaned Mail	0	0	0.00	0	0	0.00
South Terminal-Intl Deplaned Mail	0	0	0.00	0	0	0.00
Mail Totals	705,133	486,991	44.79	5,657,011	3,730,769	51.63
<b>Cargo</b>						
Domestic Enplaned Cargo	7,898,489	8,994,655	-12.19	81,031,569	78,602,792	3.09
Domestic Deplaned Cargo	6,568,014	7,748,152	-15.23	65,156,795	69,206,039	-5.85
International Enplaned Cargo	247,329	411,919	-39.96	3,757,366	4,052,546	-7.28
International Deplaned Cargo	0	0	0.00	0	0	0.00
South Terminal-Intl Enplaned Cargo	0	0	0.00	0	0	0.00
South Terminal-Intl Deplaned Cargo	0	0	0.00	0	0	0.00
Cargo Totals	14,713,832	17,154,726	-14.23	149,945,730	151,861,377	-1.26
<b>Belly Freight</b>						
Domestic Enplaned Belly Freight	1,099,410	1,376,401	-20.12	9,686,706	12,255,349	-20.96
Domestic Deplaned Belly Freight	847,213	753,488	12.44	8,103,862	7,332,277	10.52
International Enplaned Belly Freight	0	0	0.00	0	0	0.00
International Deplaned Belly Freight	0	0	0.00	0	0	0.00
South Terminal-Intl Enplaned Belly Frt	0	0	0.00	0	0	0.00
South Terminal-Intl Deplaned Belly Frt	0	0	0.00	0	0	0.00
Belly Freight Totals	1,946,623	2,129,889	-8.60	17,790,568	19,587,626	-9.17
<b>Cargo Totals (Mail, Cargo, Belly Freight)</b>	<b>17,365,588</b>	<b>19,771,606</b>	<b>-12.17</b>	<b>173,393,309</b>	<b>175,179,772</b>	<b>-1.02</b>

**CURRENT CARGO RECORD = 40,215,518**

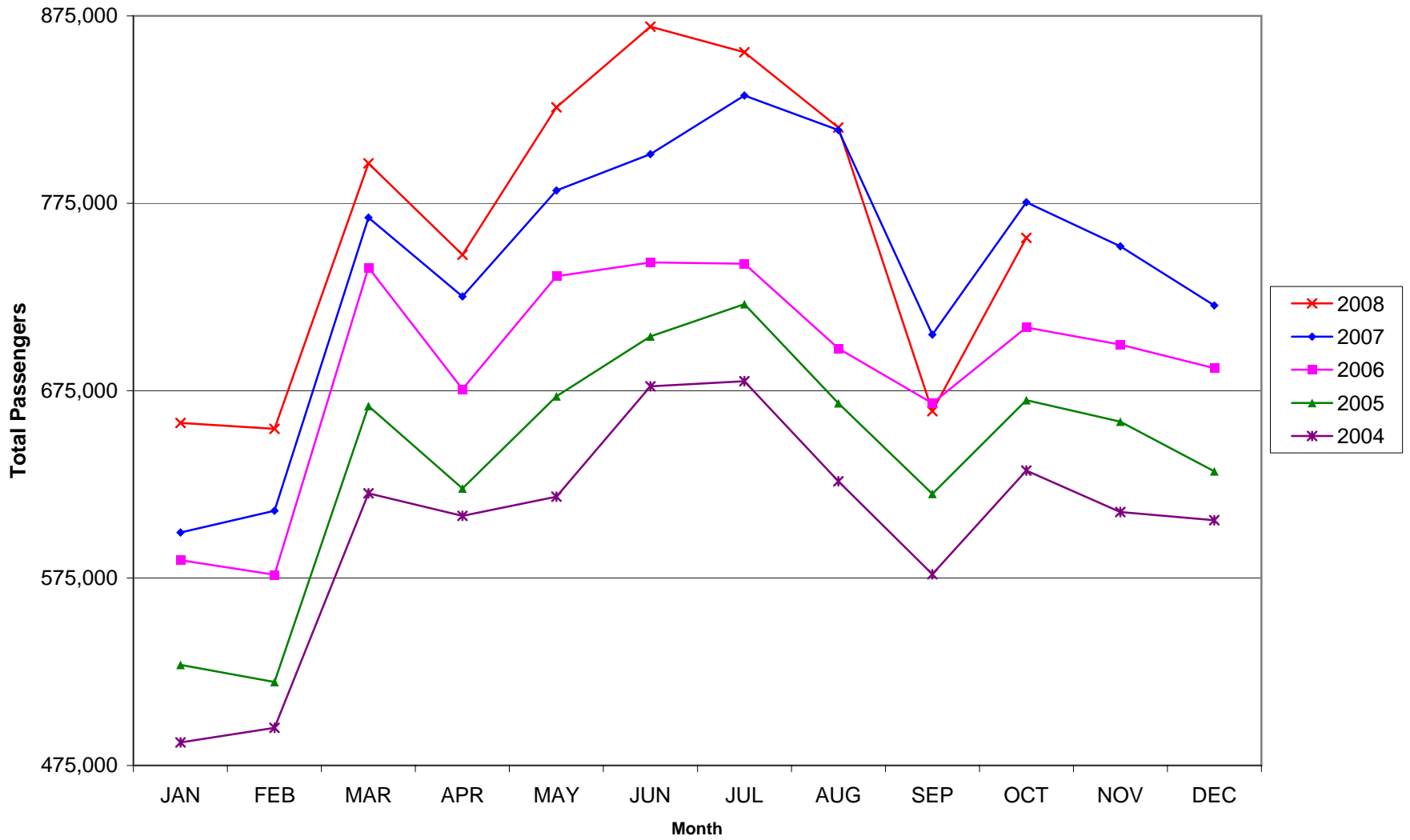
**RECORD SET = MARCH 2001**

## **AUS – Airline Codes**

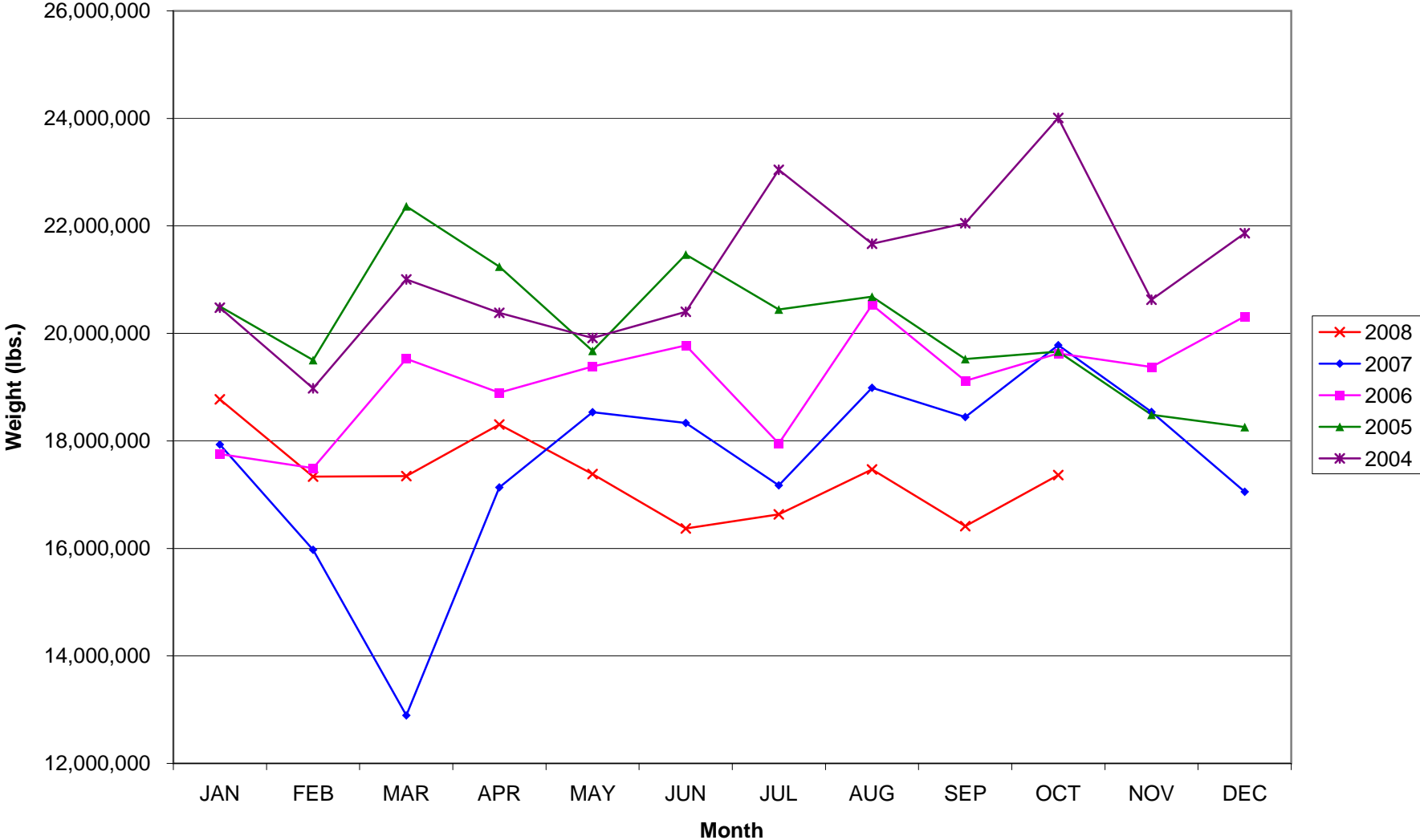
October 2008

<b><u>Code</u></b>	<b><u>Carrier</u></b>
VB	Aeroenlaces Nacionales S.A. de C.V./vivaAerobus
G4	Allegiant Air
AA	American Airlines, Inc.
RP	Chautauqua Airlines, Inc.
CO	Continental Airlines
DL	Delta Airlines
9E	Delta Airlines/Pinnacle
F9	Frontier Airlines DIP
QK	Jazz Air LP
B6	JetBlue Airways Corp.
YV	Mesa Airlines, Inc.
NW	Northwest Airlines
9E	Pinnacle Airlines, Inc. (Northwest AirlinK & Delta Connection)
S5	Shuttle America Corp. (Delta Connection)
OO	SkyWest Airlines, Inc.
WN	Southwest Airlines
AX	Trans States Airlines, Inc.
UA	United Airlines, Inc. (GoJet Airlines dba United Express)
US	US Airways Group, Inc.

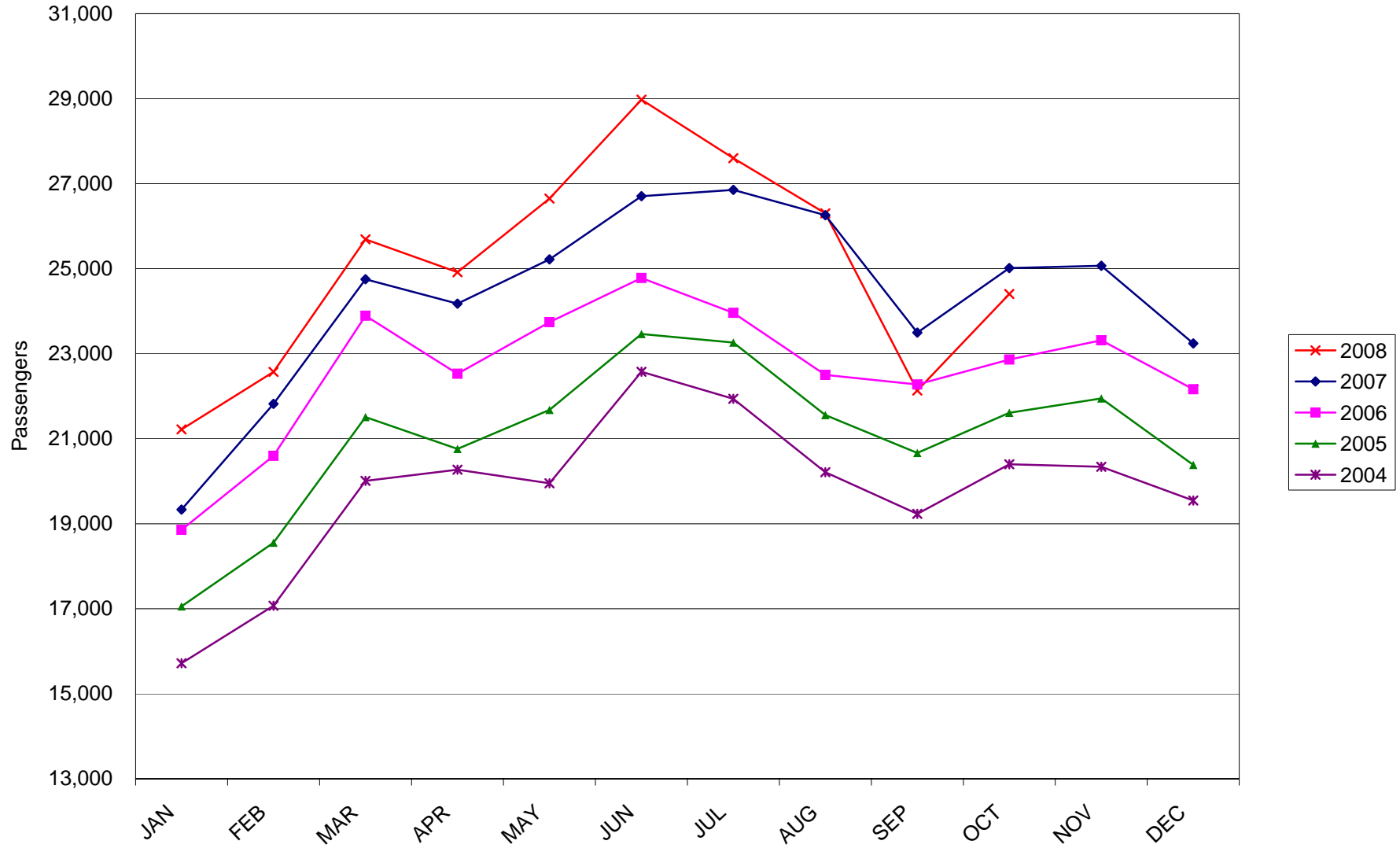
# AUSTIN PASSENGER TRAFFIC



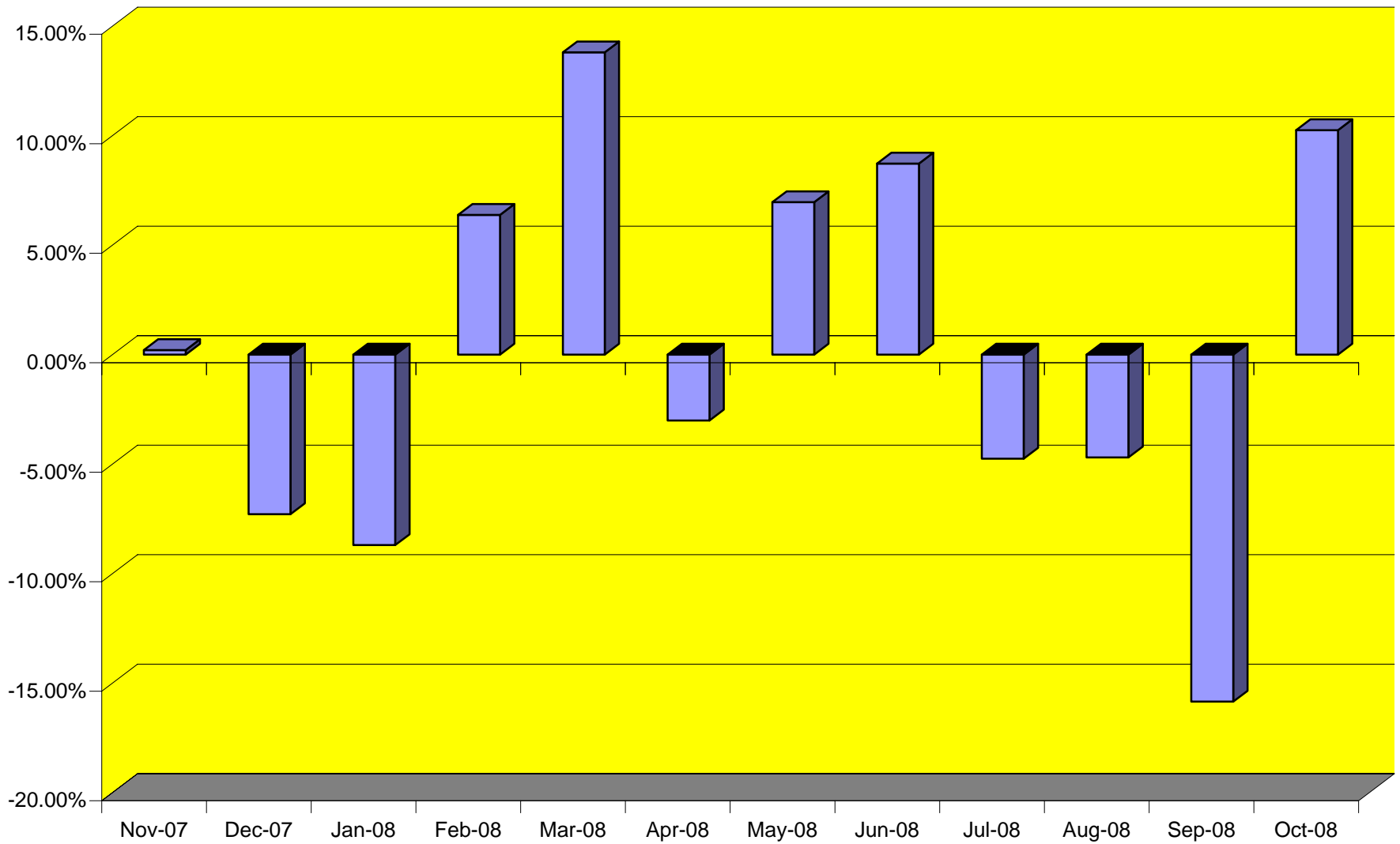
### TOTAL CARGO POUNDAGE - AUSTIN, TEXAS



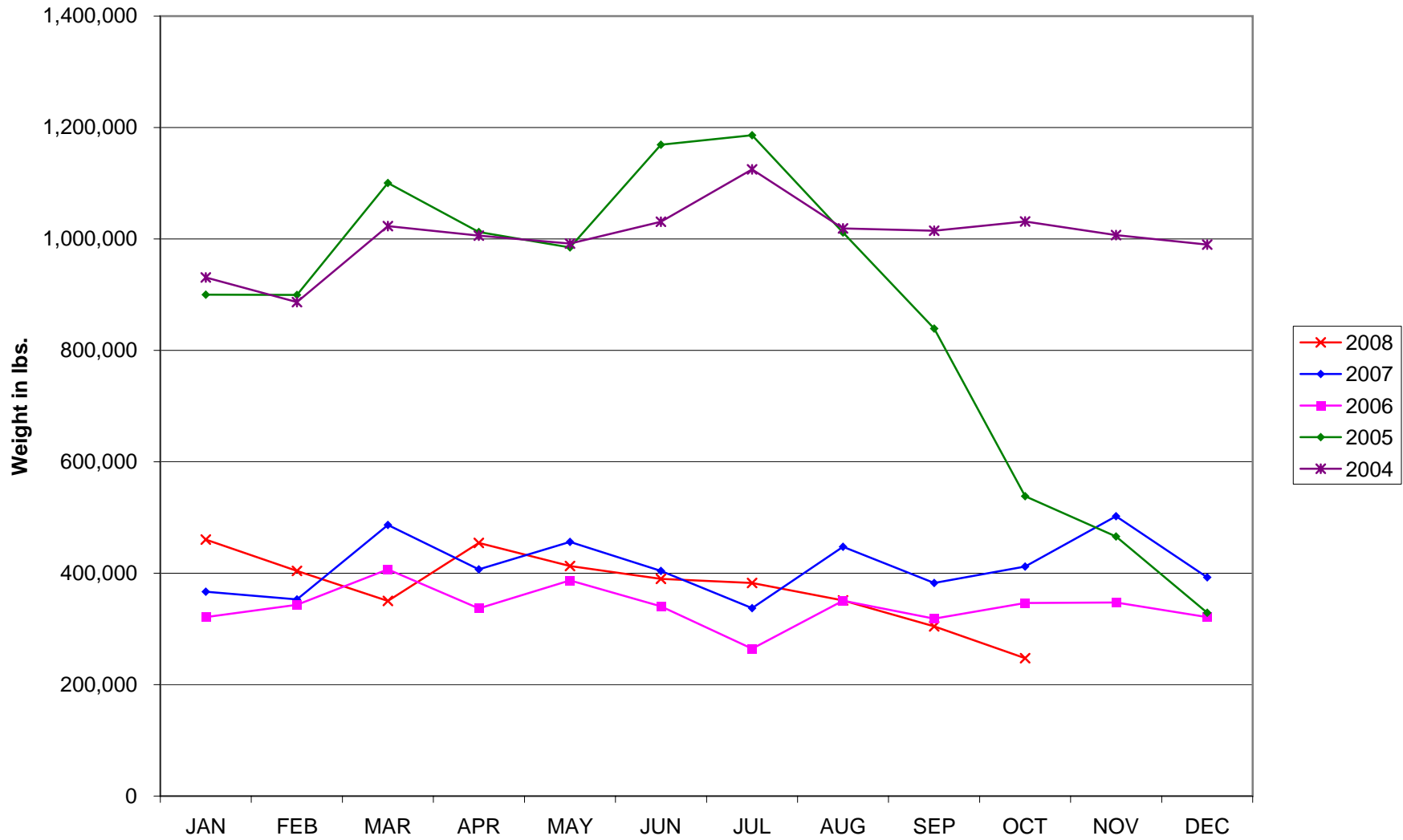
Average Daily Passengers



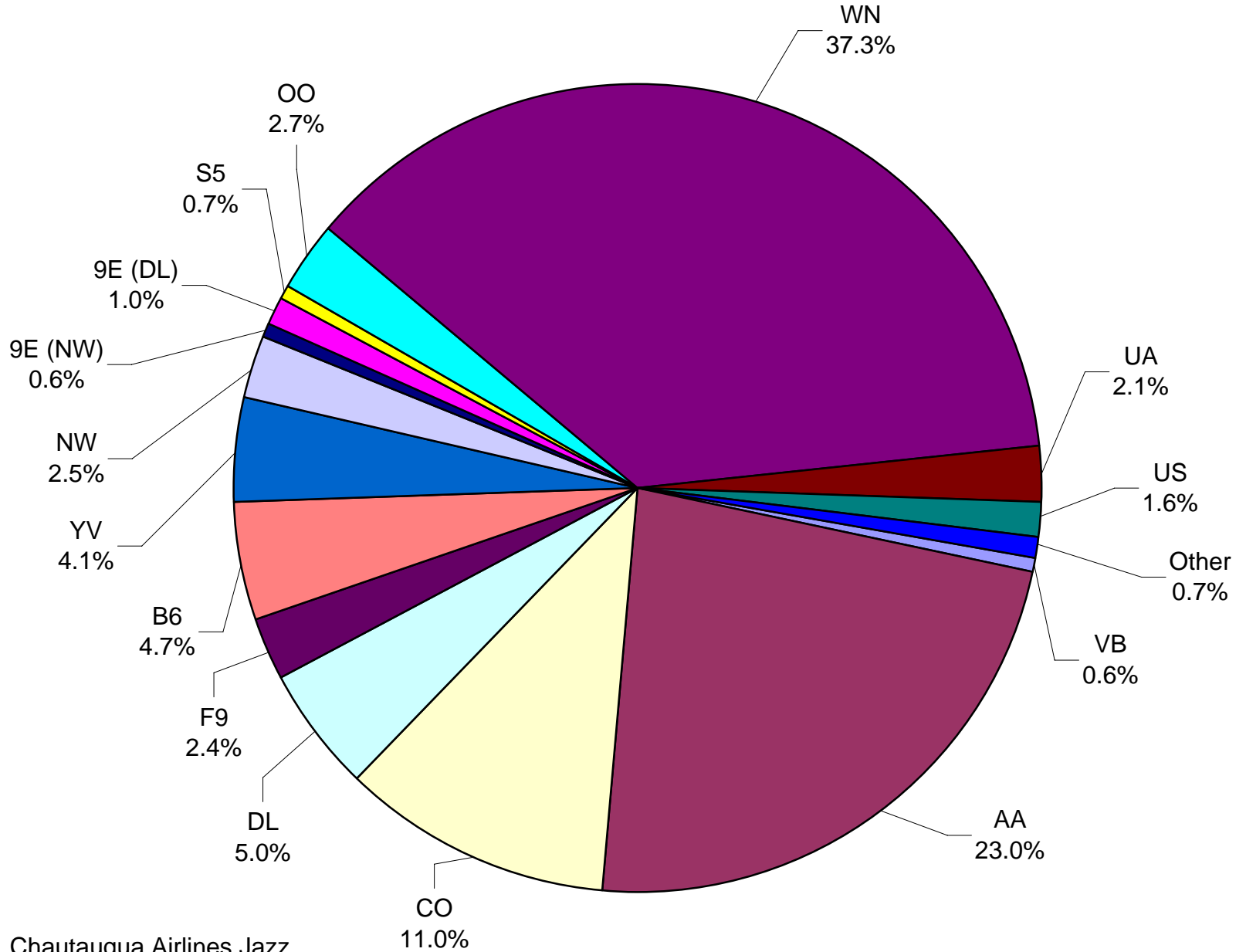
Monthly % Change in Average Daily Passengers



### History of International Air Cargo



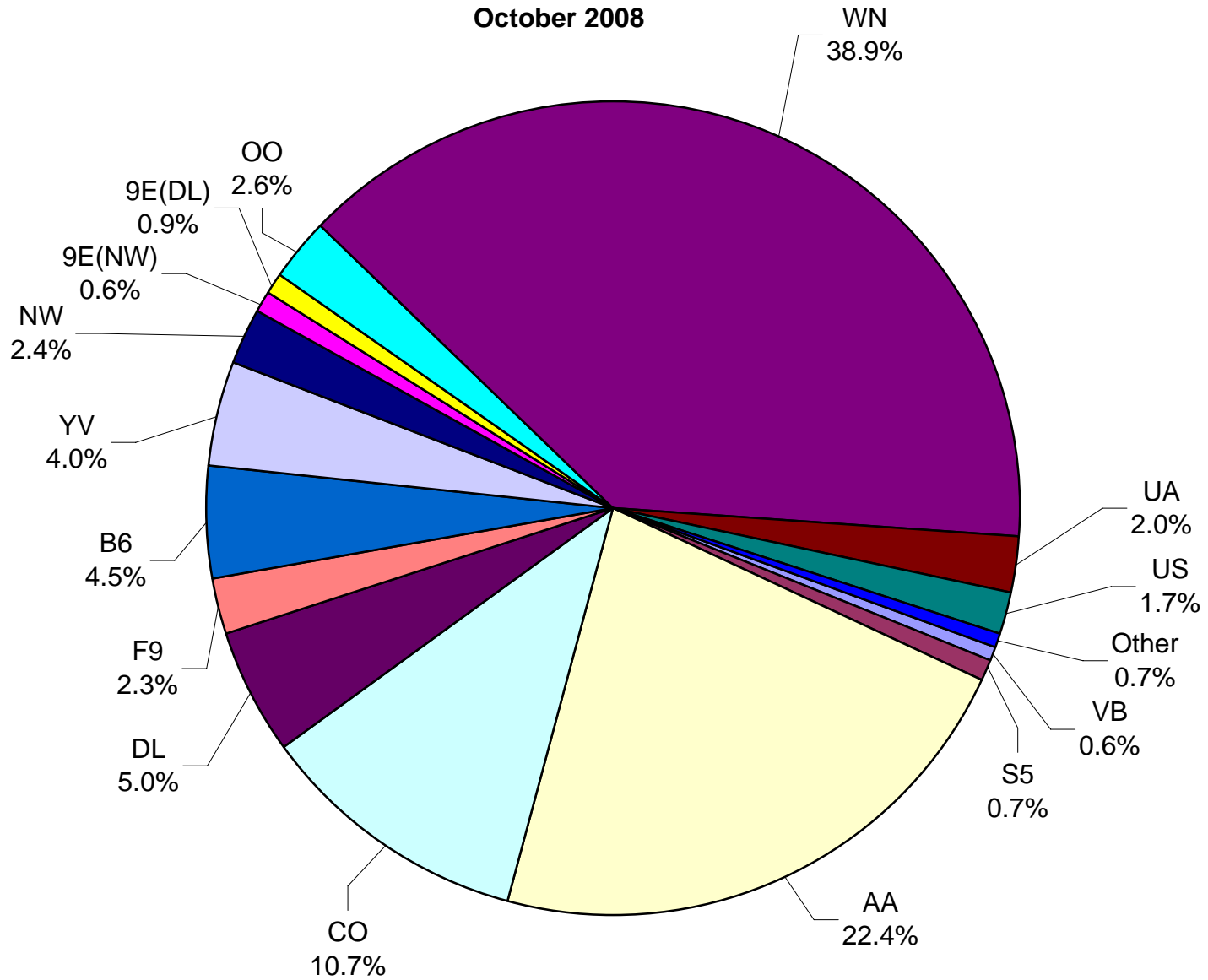
**Total Passengers  
October 2008**



**Other** = Allegiant Air, Chautauqua Airlines, Jazz Air L.P. and Trans States Airlines.

**Note:** United Airlines percentage includes sub-contractors.

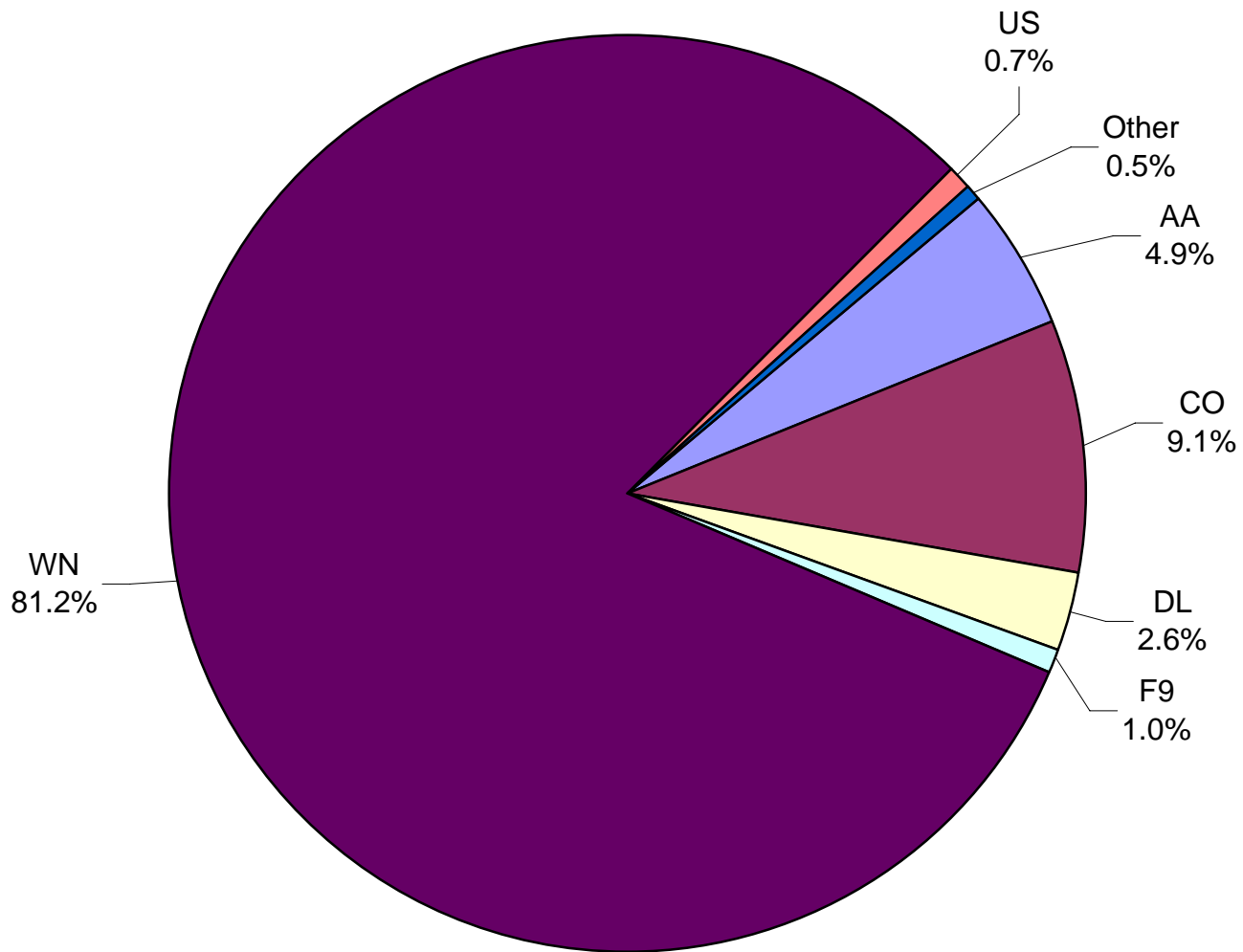
**All Passenger Carriers  
Enplaned Revenue Passengers  
October 2008**



**Other** = Allegiant Air, Jazz Air LP and Trans States Airlines Inc.

**Note:** United Airlines percentage includes sub-contractors.

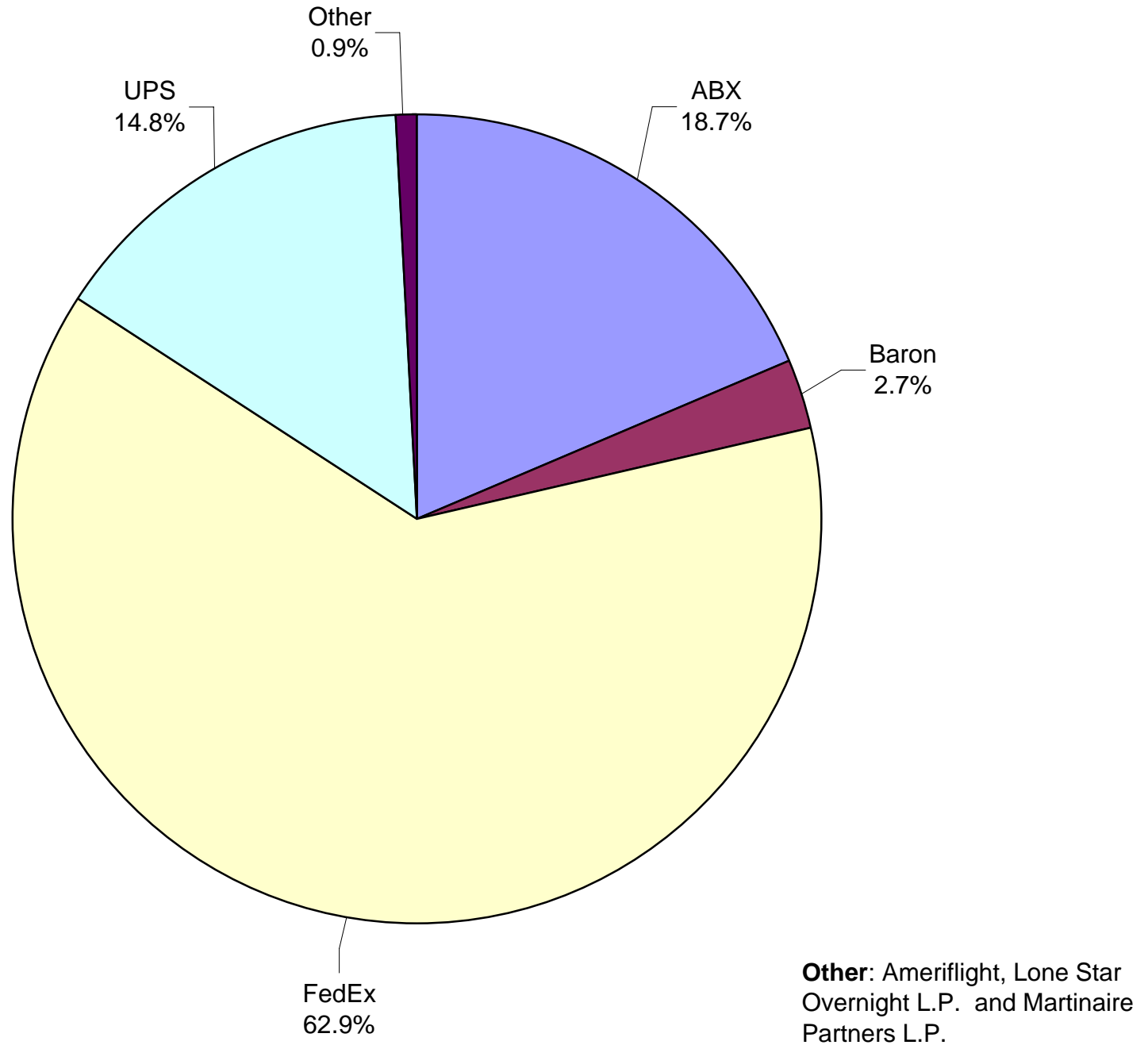
**AUS Belly Freight Market Shares  
October 2008**



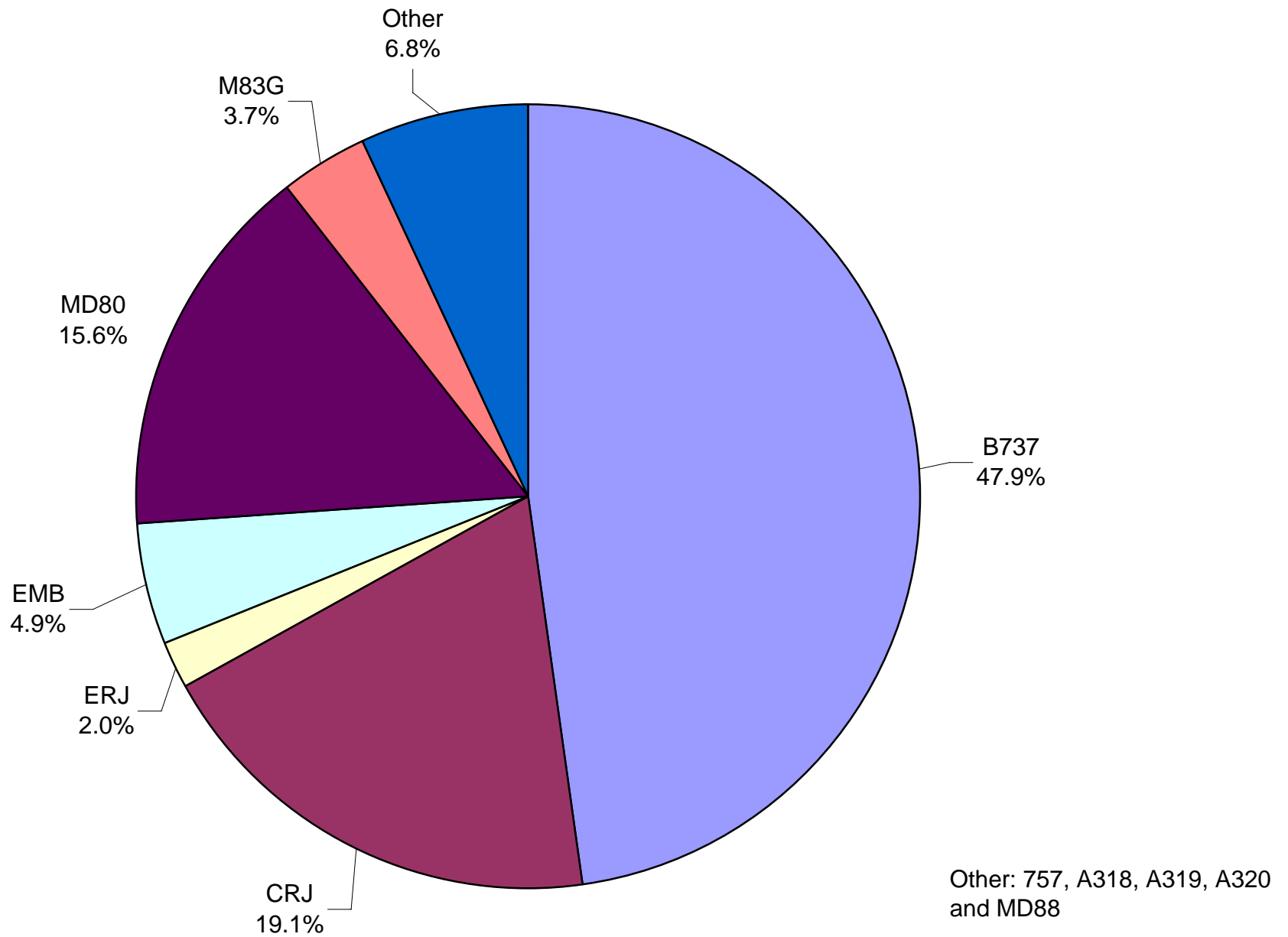
**Other** = Mesa Airlines, Inc., Northwest Airlines, Pinnacle Airlines, Inc.(NW & DL) and United Airlines, Inc.

**Note:** United Airlines percentage includes sub-contractors.

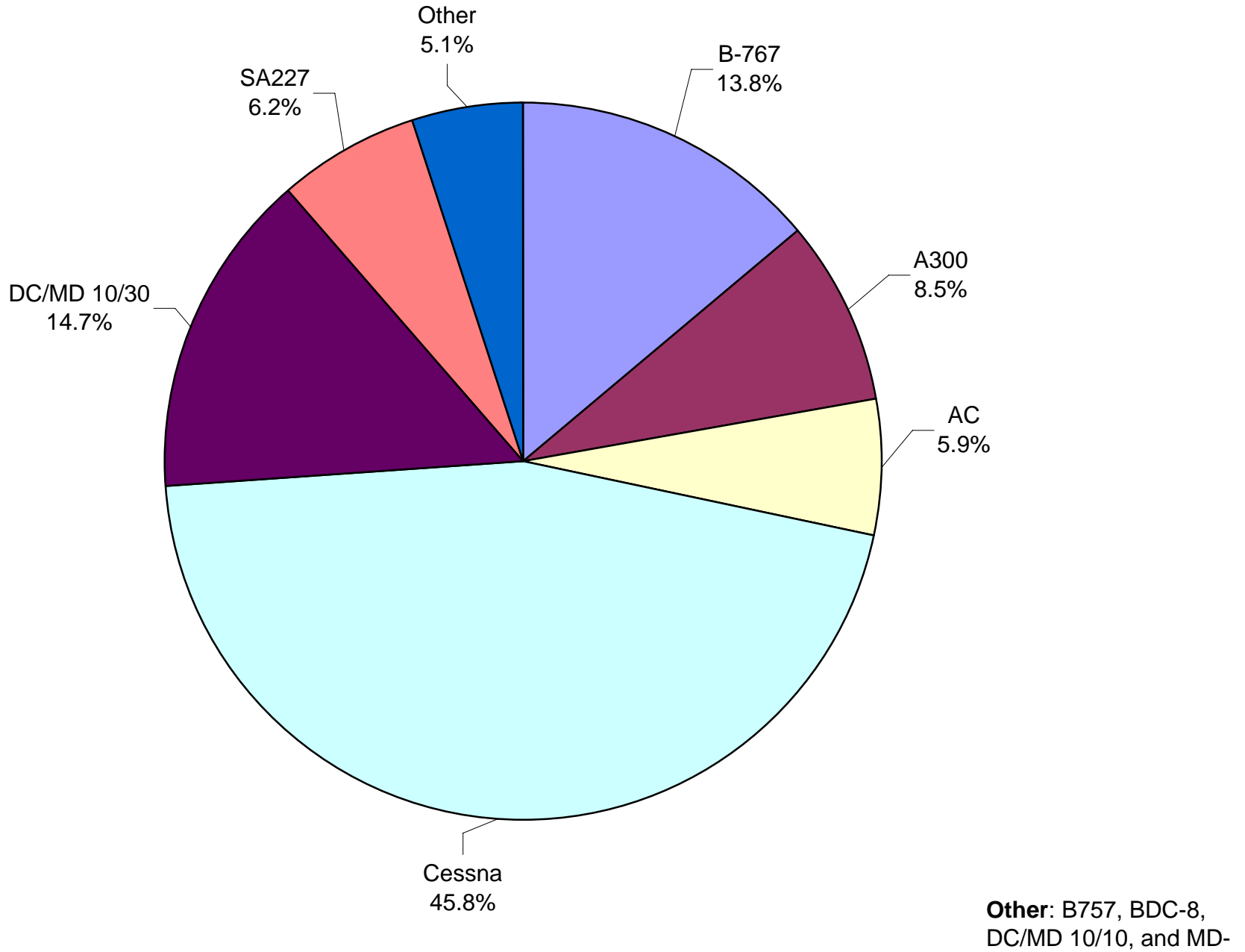
**Air Cargo Market Shares  
October 2008**



**AUS Scheduled Passenger Aircraft Fleet Mix  
October 2008**



**AUS Scheduled Cargo Aircraft Fleet Mix  
October 2008**



# Austin-Bergstrom International Airport

## PAX Detail Report - October, 2008

Company	10/2008	10/2007	Period		YTD 2008	YTD 2007	YTD		2008 Share	2007 Share	Share Diff
			Difference	Change			Difference	Change			
Aero Mexico Airlines/Aerovias de Mexico, S.A. de C.V.	0	1,925	-1,925	-100.0	10,584	22,679	-12,095	-53.3	0.1	0.3	-0.2
Aeroenlaces Nacionales S.A. DE C.V./vivaAerobus	4,171	0	4,171	0.0	52,377	0	52,377	0.0	0.7	0.0	0.7
Allegiant Air	254	0	254	0.0	2,977	887	2,090	235.6	0.0	0.0	0.0
American Airlines, Inc	173,846	207,195	-33,349	-16.1	1,887,379	1,987,668	-100,289	-5.0	24.7	26.8	-2.1
Atlantic Southeast Airlines, Inc.	0	6,916	-6,916	-100.0	45,046	39,613	5,433	13.7	0.6	0.5	0.1
Casino Express Airways	0	291	-291	-100.0	1,635	1,475	160	10.8	0.0	0.0	0.0
Chautauqua Airlines Inc.	41	0	41	0.0	16,026	68	15,958	23,467.6	0.2	0.0	0.2
Continental Airlines	83,173	94,949	-11,776	-12.4	810,712	864,129	-53,417	-6.2	10.6	11.7	-1.1
Delta Airlines	37,695	38,325	-630	-1.6	385,166	388,312	-3,146	-0.8	5.0	5.2	-0.2
Delta Airlines/Pinnacle	7,646	0	7,646	0.0	18,605	0	18,605	0.0	0.2	0.0	0.2
Express Jet Airlines, Inc.	0	25,055	-25,055	-100.0	126,849	133,411	-6,562	-4.9	1.7	1.8	-0.1
Frontier Airlines DIP	17,994	0	17,994	0.0	132,218	0	132,218	0.0	1.7	0.0	1.7
Frontier Airlines, Inc. - Pre Bankruptcy	0	16,429	-16,429	-100.0	60,210	181,351	-121,141	-66.8	0.8	2.4	-1.7
GoJet Airlines d/b/a United Express	3,012	0	3,012	0.0	5,537	0	5,537	0.0	0.1	0.0	0.1
Grand Holdings, Inc DBA Champion Air	0	0	0	0.0	0	412	-412	-100.0	0.0	0.0	0.0
JAZZ Air LP	2,424	0	2,424	0.0	14,256	0	14,256	0.0	0.2	0.0	0.2
JetBlue Airways Corporation	35,841	20,189	15,652	77.5	294,004	200,306	93,698	46.8	3.8	2.7	1.1
Mesa Airlines Inc.	31,157	22,157	9,000	40.6	257,208	215,227	41,981	19.5	3.4	2.9	0.5
Miami Air International Inc.	0	0	0	0.0	780	334	446	133.5	0.0	0.0	0.0
Midwest Airlines, Inc.	0	3,196	-3,196	-100.0	25,331	4,683	20,648	440.9	0.3	0.1	0.3
MN Airlines, LLC d/b/a Sun Country	0	0	0	0.0	102	0	102	0.0	0.0	0.0	0.0
Northwest Airlines	19,244	20,991	-1,747	-8.3	151,552	125,827	25,725	20.4	2.0	1.7	0.3
Pace Airlines	0	76	-76	-100.0	40	76	-36	-47.4	0.0	0.0	0.0
Pinnacle Airlines, Inc. dba Northwest Airlink	4,605	4,113	492	12.0	74,968	83,619	-8,651	-10.3	1.0	1.1	-0.1
Shuttle America Corporation	5,078	10,308	-5,230	-50.7	79,862	163,314	-83,452	-51.1	1.0	2.2	-1.2
SkyWest Airlines, Inc	20,586	17,010	3,576	21.0	173,725	153,892	19,833	12.9	2.3	2.1	0.2
Southwest Airlines	282,096	252,846	29,250	11.6	2,704,466	2,506,645	197,821	7.9	35.4	33.8	1.6
Trans States Airlines, Inc	2,578	0	2,578	0.0	16,462	20,439	-3,977	-19.5	0.2	0.3	-0.1
United Airlines, Inc.	12,859	16,439	-3,580	-21.8	161,219	175,703	-14,484	-8.2	2.1	2.4	-0.3
US Airways Group, Inc.	12,253	17,077	-4,824	-28.2	134,188	142,782	-8,594	-6.0	1.8	1.9	-0.2
USA Jet Airlines, Inc.	0	0	0	0.0	16	0	16	0.0	0.0	0.0	0.0
<b>Report Totals</b>	<b>756,553</b>	<b>775,487</b>	<b>-18,934</b>	<b>-2.4%</b>	<b>7,643,500</b>	<b>7,412,852</b>	<b>230,648</b>	<b>3.1%</b>			

### Statistics Included in Report:

#### Domestic Passengers:

Enplaned Revenue, Deplaned Revenue, Through Revenue, Enplaned Non-Revenue, Deplaned Non-Revenue, Through Non-Revenue

#### International Passenger:

Enplaned Revenue, Deplaned Revenue, Through Revenue, Enplaned Non-Revenue, Deplaned Non-Revenue, Through Non-Revenue, South Terminal-Int'l Enplaned Revenue, South Terminal-Int'l Deplaned Revenue, South Terminal-Int'l Through Revenue, South Terminal-Int'l Enplaned Non-Revenue, South Terminal-Int'l Deplaned Non-Revenue, South Terminal-Int'l Through Non-Revenue

# Austin-Bergstrom International Airport

## Summary Landing Report

### Landing Type: Total

Month	2008		2007		2006		% Change 2008 - 2007		% Change 2007 - 2006	
	Count	Weight	Count	Weight	Count	Weight	Count	Weight	Count	Weight
January	4,994	508,546,911	4,268	461,157,264	4,314	454,270,179	17.01%	10.28%	-1.07%	1.52%
February	4,707	477,510,902	4,081	432,333,052	4,039	431,045,336	15.34%	10.45%	1.04%	0.30%
March	5,057	511,086,453	4,693	498,304,509	4,750	489,668,305	7.76%	2.57%	-1.20%	1.76%
April	4,853	498,467,860	4,657	485,905,500	4,513	460,099,145	4.21%	2.59%	3.19%	5.61%
May	5,213	542,161,220	5,116	524,923,078	4,697	488,433,026	1.90%	3.28%	8.92%	7.47%
June	5,252	551,158,994	5,005	521,795,072	4,602	473,433,518	4.94%	5.63%	8.76%	10.22%
July	5,097	553,506,814	5,243	543,571,241	4,597	474,383,579	-2.78%	1.83%	14.05%	14.58%
August	5,005	550,393,207	5,452	559,875,138	4,699	487,707,507	-8.20%	-1.69%	16.02%	14.80%
September	4,260	481,912,614	5,105	513,849,856	4,463	468,374,570	-16.55%	-6.22%	14.38%	9.71%
October	4,550	518,348,013	5,373	539,788,979	4,743	495,762,514	-15.32%	-3.97%	13.28%	8.88%
November			5,052	515,328,663	4,487	476,027,737			12.59%	8.26%
December			4,997	511,272,858	4,596	484,901,631			8.72%	5.44%
<b>Totals for Selected Period</b>	48,988	5,193,092,988	48,993	5,081,503,689	45,417	4,723,177,679	-0.01%	2.20%	7.87%	7.59%
<b>Yearly Totals</b>	48,988	5,193,092,988	59,042	6,108,105,210	54,500	5,684,107,047			8.33%	7.46%