

Austin-Bergstrom International Airport

Aviation Activity Report

| | 09/2009 | 09/2008 | Percent Change | 01/2009 - 09/2009 | 01/2008 - 09/2008 | Percent Change |
|--|---------|---------|----------------|-------------------|-------------------|----------------|
| <u>Passenger Activity</u> | | | | | | |
| Domestic Enplaned Revenue | 321,405 | 313,428 | 2.55 | 2,943,213 | 3,242,826 | -9.24 |
| Domestic Deplaned Revenue | 326,022 | 315,645 | 3.29 | 2,959,565 | 3,243,631 | -8.76 |
| Domestic Through Revenue | 0 | 12,001 | -100.00 | 1,956 | 148,619 | -98.68 |
| International Enplaned Revenue | 164 | 861 | -80.95 | 6,312 | 9,452 | -33.22 |
| International Deplaned Revenue | 182 | 932 | -80.47 | 6,632 | 9,767 | -32.10 |
| International Through Revenue | 0 | 0 | 0.00 | 0 | 0 | 0.00 |
| Domestic Enplaned Non-Revenue | 9,547 | 8,613 | 10.84 | 89,784 | 92,129 | -2.55 |
| Domestic Deplaned Non-Revenue | 8,919 | 8,011 | 11.33 | 85,397 | 89,120 | -4.18 |
| Domestic Through Non-Revenue | 0 | 0 | 0.00 | 107 | 0 | 0.00 |
| International Enplaned Non-Revenue | 6 | 26 | -76.92 | 224 | 149 | 50.34 |
| International Deplaned Non-Revenue | 7 | 24 | -70.83 | 231 | 171 | 35.09 |
| International Through Non-Revenue | 0 | 0 | 0.00 | 0 | 0 | 0.00 |
| South Terminal-Intl Enplaned Revenue | 0 | 2,076 | -100.00 | 8,095 | 25,436 | -68.18 |
| South Terminal-Intl Deplaned Revenue | 0 | 2,466 | -100.00 | 8,686 | 25,647 | -66.13 |
| South Terminal-Intl Through Revenue | 0 | 0 | 0.00 | 0 | 0 | 0.00 |
| South Terminal-Intl Enplaned Non-Revenue | 0 | 0 | 0.00 | 0 | 0 | 0.00 |
| South Terminal-Intl Deplaned Non-Revenue | 0 | 0 | 0.00 | 0 | 0 | 0.00 |
| South Terminal-Intl Through Non-Revenue | 0 | 0 | 0.00 | 0 | 0 | 0.00 |
| Passenger Totals | 666,252 | 664,083 | 0.33 | 6,110,202 | 6,886,947 | -11.28 |

CURRENT PASSENGER RECORD = 869,308

RECORD SET = JUNE 2008

Aircraft Operations

| | | | | | | |
|---------------------|--------|--------|--------|---------|---------|--------|
| Air Carrier | 7,555 | 8,167 | -7.49 | 69,663 | 80,579 | -13.55 |
| Commuter & Air Taxi | 1,368 | 1,747 | -21.69 | 12,648 | 22,347 | -43.40 |
| Military | 800 | 292 | 173.97 | 4,967 | 3,958 | 25.49 |
| General Aviation | | | | | | |
| Itinerant | 4,573 | 6,148 | -25.62 | 42,128 | 53,718 | -21.58 |
| Local | 326 | 161 | 102.48 | 1,869 | 2,112 | -11.51 |
| Total G.A. | 4,899 | 6,309 | -22.35 | 43,997 | 55,830 | -21.19 |
| Total Operations | 14,622 | 16,515 | -11.46 | 131,275 | 162,714 | -19.32 |

Austin-Bergstrom International Airport

Aviation Activity Report

| | 09/2009 | 09/2008 | Percent Change | 01/2009 - 09/2009 | 01/2008 - 09/2008 | Percent Change |
|---|------------|------------|----------------|-------------------|-------------------|----------------|
| <u>Cargo Activity</u> | | | | | | |
| Mail | | | | | | |
| Domestic Enplaned Mail | 157,246 | 163,682 | -3.93 | 1,006,157 | 1,671,068 | -39.79 |
| Domestic Deplaned Mail | 290,747 | 408,731 | -28.87 | 2,943,094 | 3,280,810 | -10.29 |
| International Enplaned Mail | 0 | 0 | 0.00 | 0 | 0 | 0.00 |
| International Deplaned Mail | 0 | 0 | 0.00 | 0 | 0 | 0.00 |
| South Terminal-Intl Enplaned Mail | 0 | 0 | 0.00 | 0 | 0 | 0.00 |
| South Terminal-Intl Deplaned Mail | 0 | 0 | 0.00 | 0 | 0 | 0.00 |
| Mail Totals | 447,993 | 572,413 | -21.74 | 3,949,251 | 4,951,878 | -20.25 |
| Cargo | | | | | | |
| Domestic Enplaned Cargo | 6,549,210 | 7,705,791 | -15.01 | 52,927,203 | 73,133,080 | -27.63 |
| Domestic Deplaned Cargo | 4,784,436 | 6,194,546 | -22.76 | 44,299,576 | 58,588,781 | -24.39 |
| International Enplaned Cargo | 365,382 | 304,820 | 19.87 | 2,664,891 | 3,510,037 | -24.08 |
| International Deplaned Cargo | 0 | 0 | 0.00 | 0 | 0 | 0.00 |
| South Terminal-Intl Enplaned Cargo | 0 | 0 | 0.00 | 0 | 0 | 0.00 |
| South Terminal-Intl Deplaned Cargo | 0 | 0 | 0.00 | 0 | 0 | 0.00 |
| Cargo Totals | 11,699,028 | 14,205,157 | -17.64 | 99,891,670 | 135,231,898 | -26.13 |
| Belly Freight | | | | | | |
| Domestic Enplaned Belly Freight | 734,528 | 832,189 | -11.74 | 6,463,873 | 8,587,296 | -24.73 |
| Domestic Deplaned Belly Freight | 438,066 | 801,715 | -45.36 | 4,667,152 | 7,256,649 | -35.68 |
| International Enplaned Belly Freight | 0 | 0 | 0.00 | 0 | 0 | 0.00 |
| International Deplaned Belly Freight | 0 | 0 | 0.00 | 0 | 0 | 0.00 |
| South Terminal-Intl Enplaned Belly Frt | 0 | 0 | 0.00 | 0 | 0 | 0.00 |
| South Terminal-Intl Deplaned Belly Frt | 0 | 0 | 0.00 | 0 | 0 | 0.00 |
| Belly Freight Totals | 1,172,594 | 1,633,904 | -28.23 | 11,131,025 | 15,843,945 | -29.75 |
| Cargo Totals (Mail, Cargo, Belly Freight) | 13,319,615 | 16,411,474 | -18.84 | 114,971,946 | 156,027,721 | -26.31 |

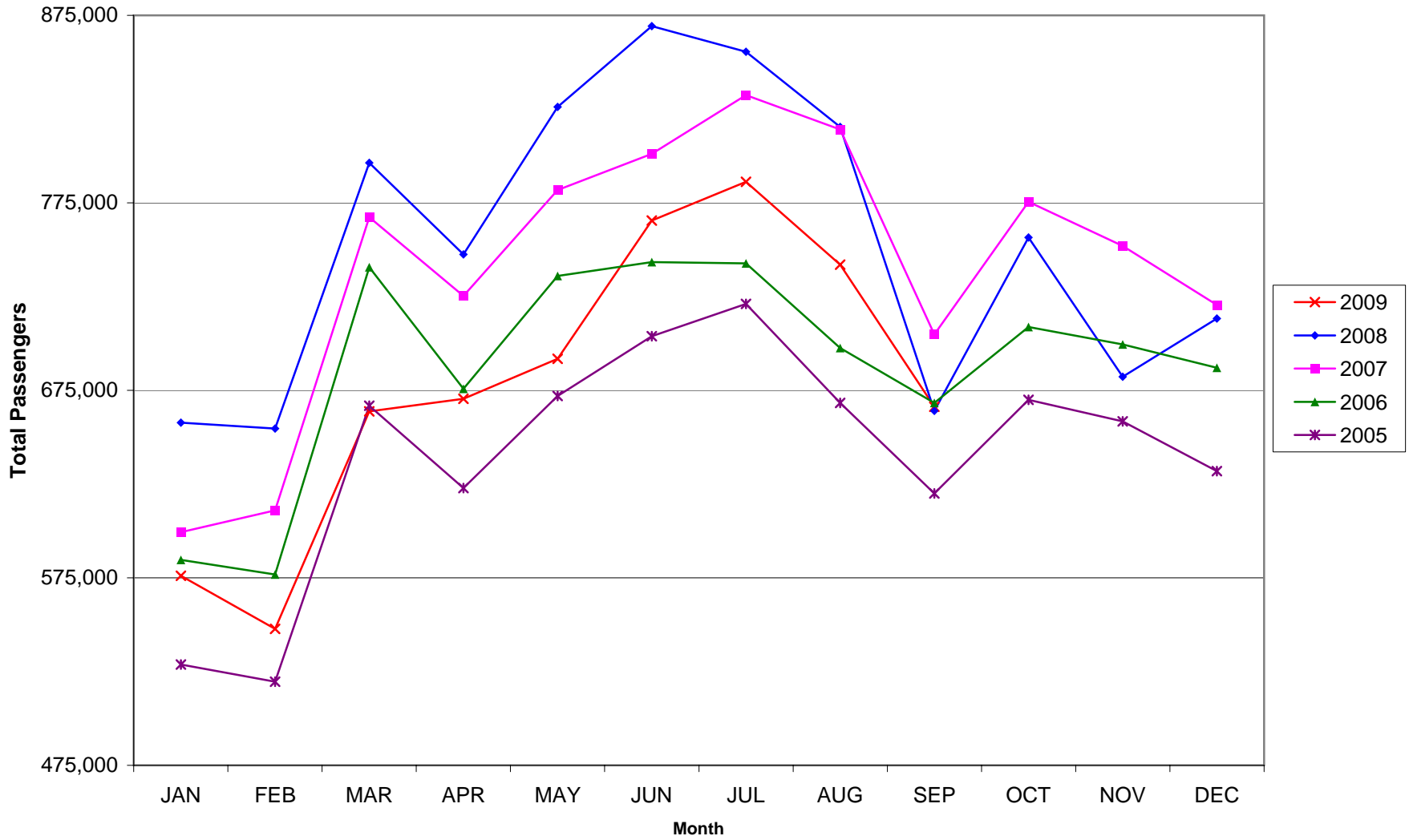
CURRENT CARGO RECORD = 40,215,518

RECORD SET = MARCH 2001

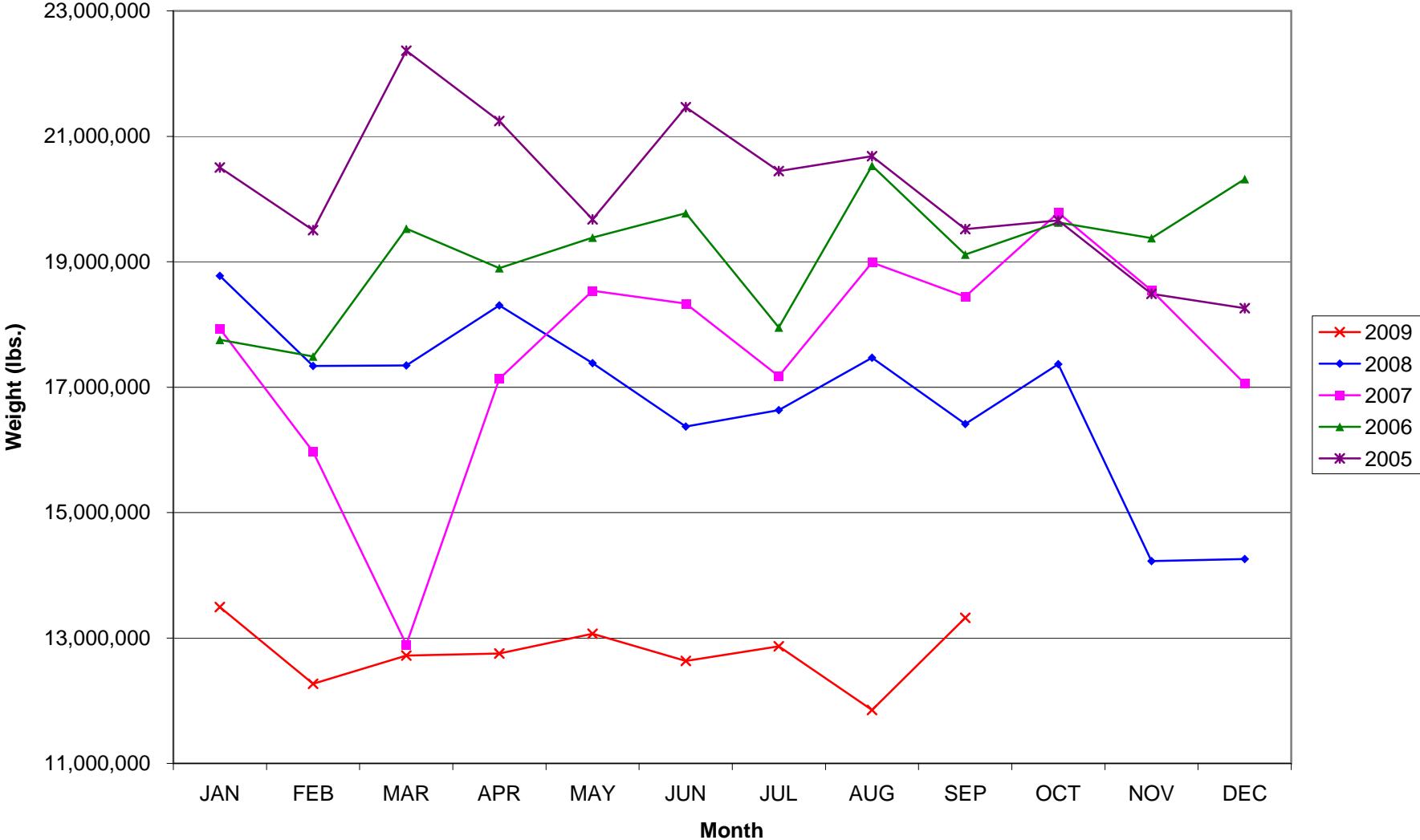
AUS – Airline Codes
September 2009

| <u>Code</u> | <u>Carrier</u> |
|--------------------|---|
| AS | Alaska Airlines, Inc. |
| G4 | Allegiant Air |
| AA | American Airlines, Inc. |
| XP | Casino Express Airways |
| RP | Chautauqua Airlines, Inc. |
| CO | Continental Airlines |
| DL | Delta Airlines |
| F9 | Frontier Airlines DIP |
| QK | Jazz Air LP |
| B6 | JetBlue Airways Corp. |
| YV | Mesa Airlines, Inc. |
| S5 | Shuttle America Corp. (Delta Connection) |
| OO | SkyWest Airlines, Inc. |
| WN | Southwest Airlines |
| UA | United Airlines, Inc. (GoJet Airlines dba United Express) |
| US | US Airways Group, Inc. |
| V2 | Vision Airlines |

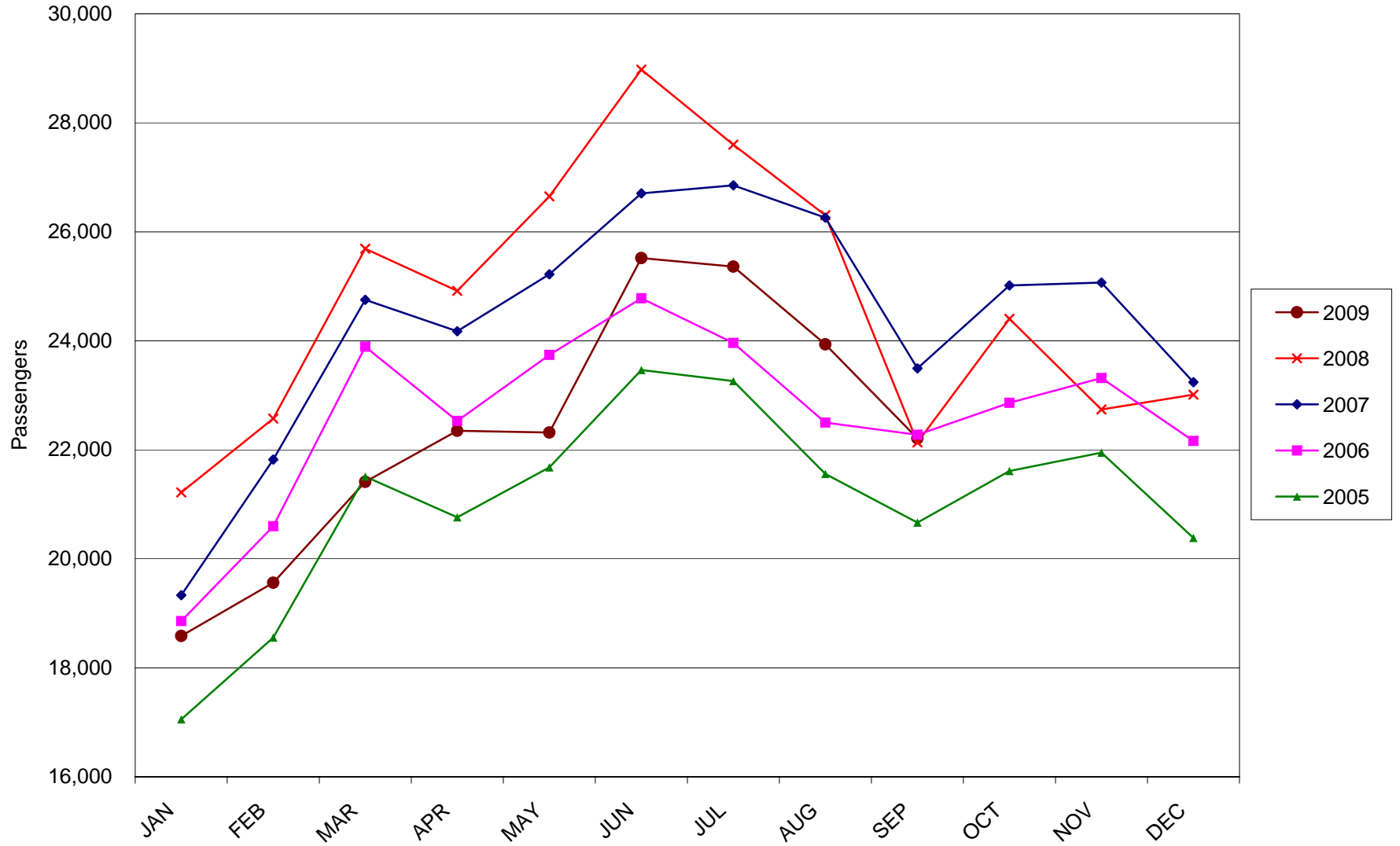
AUSTIN PASSENGER TRAFFIC



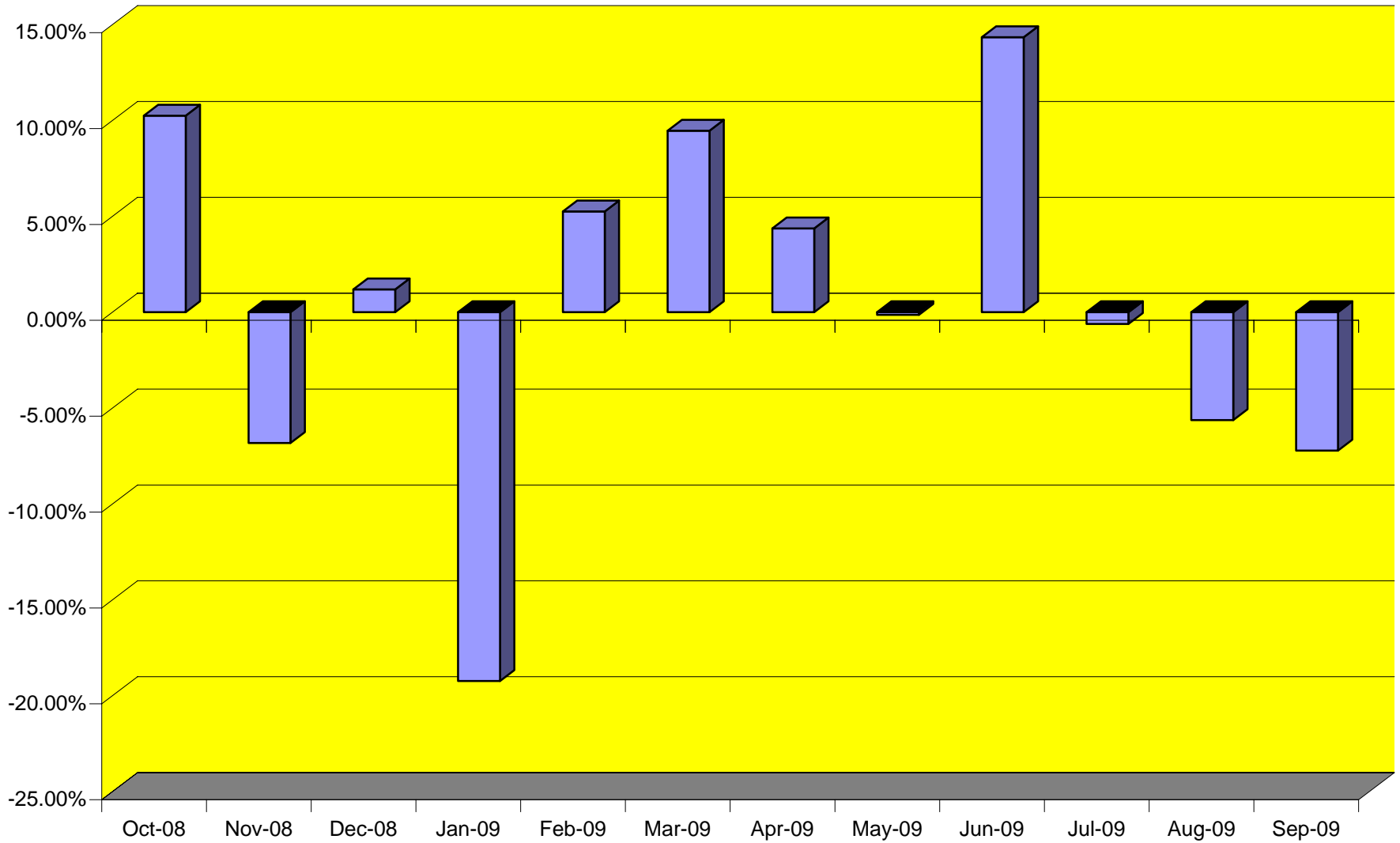
TOTAL CARGO POUNDAGE - AUSTIN, TEXAS



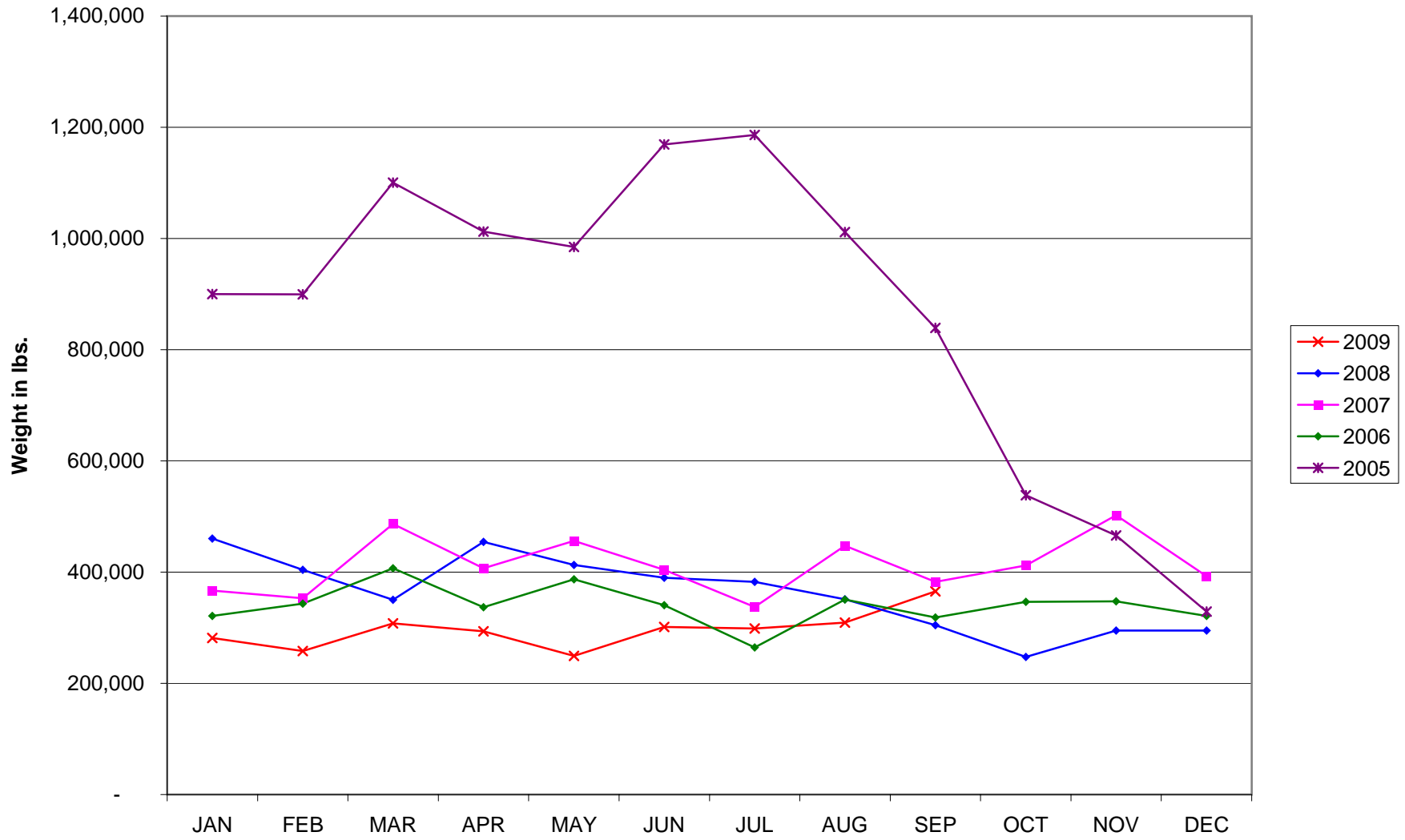
Average Daily Passengers



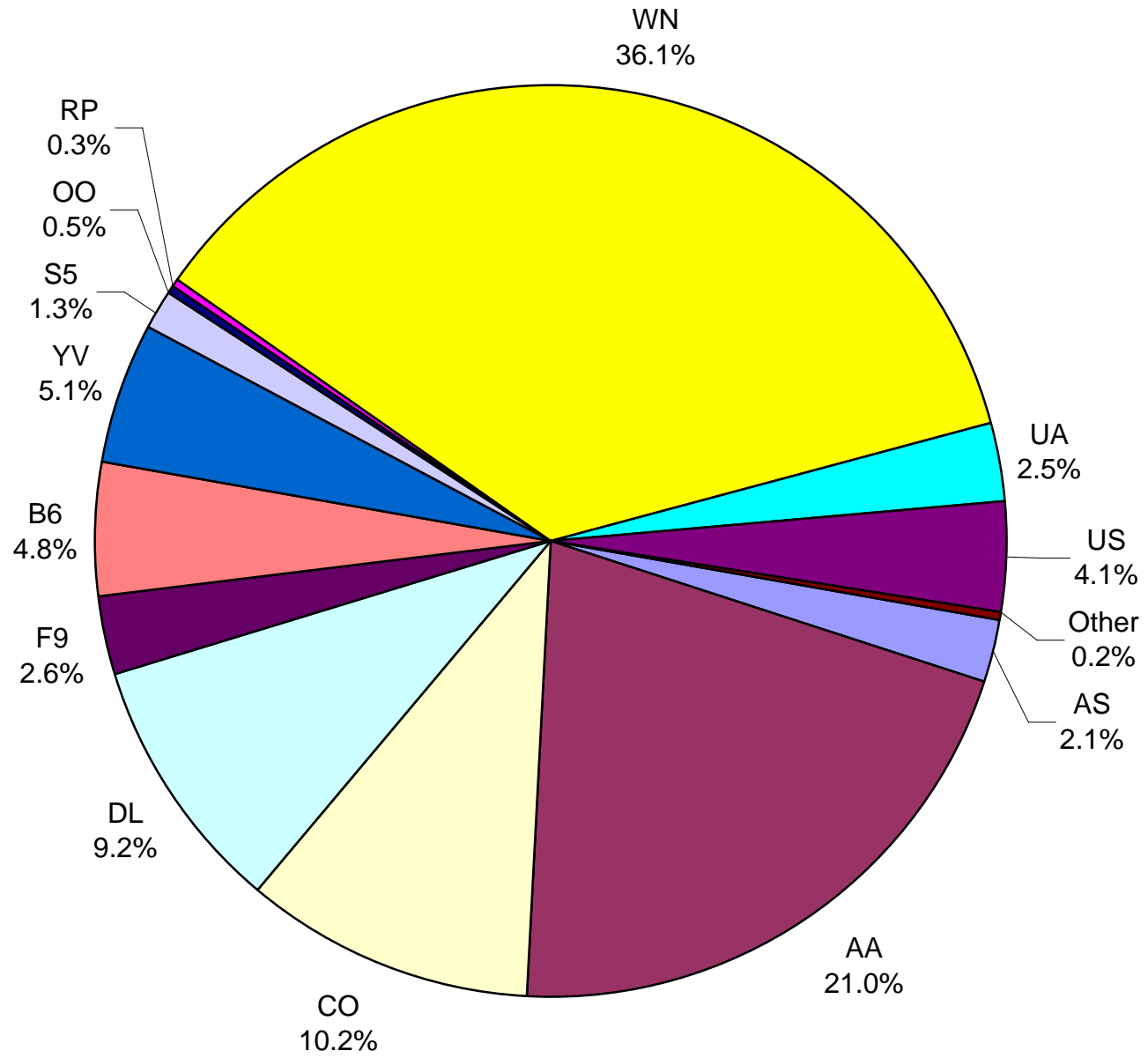
Monthly % Change in Average Daily Passengers



History of International Air Cargo



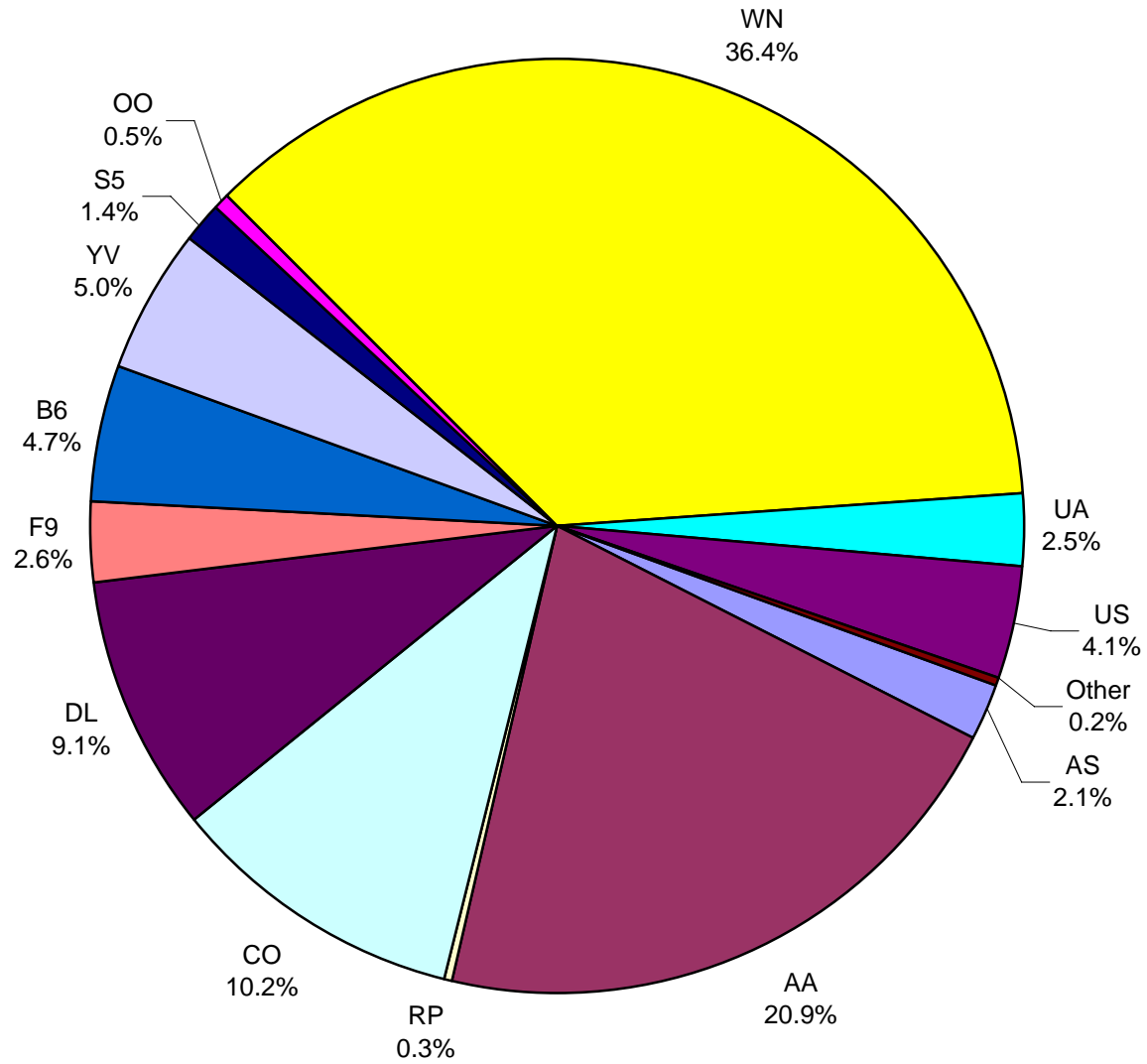
**Total Passengers
September 2009**



Other = Allegiant Air, Casino Express Airways, Jazz Air L.P. and Vision Airlines.

Note: United Airlines percentage includes sub-contractors.

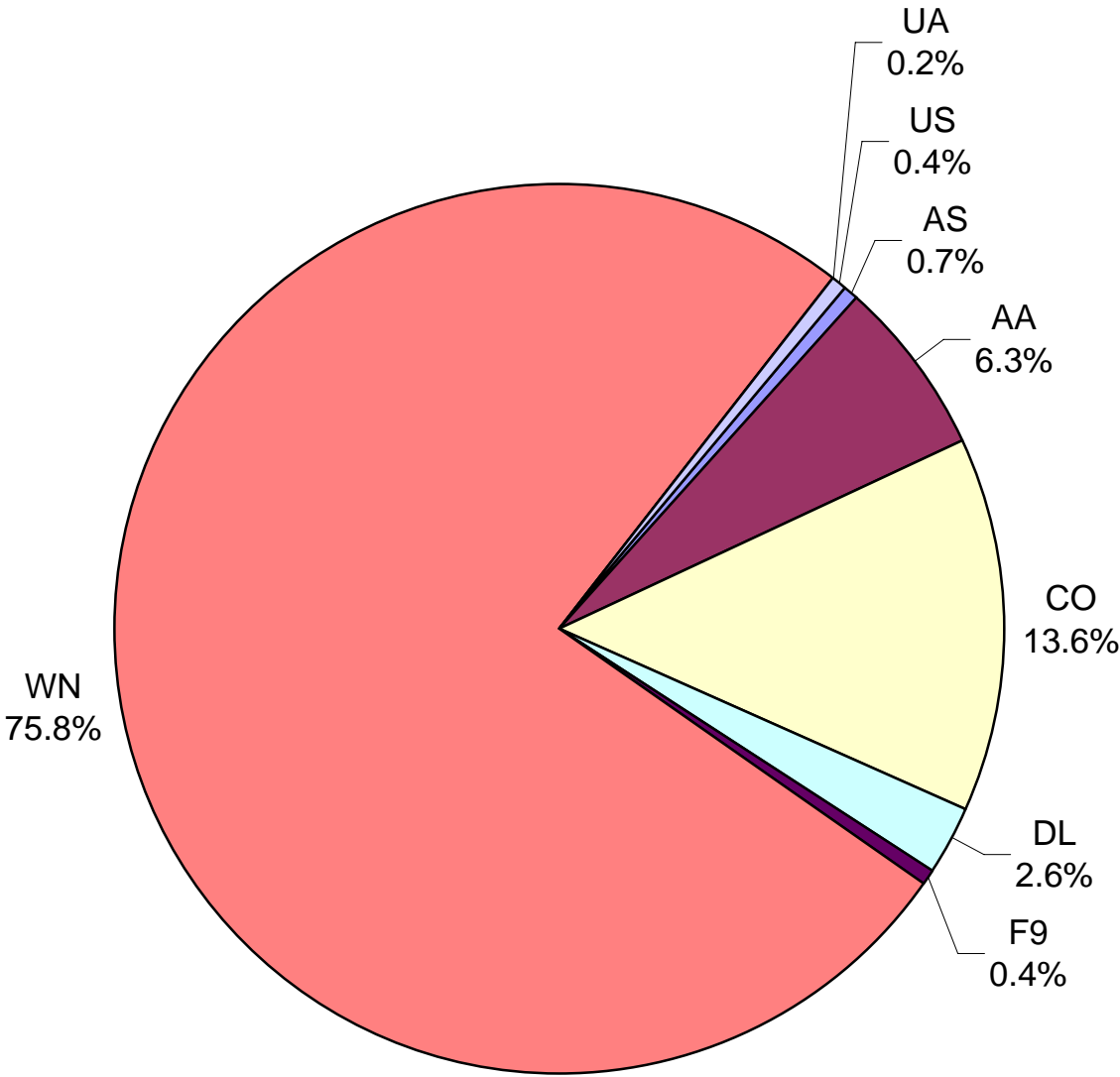
**All Passenger Carriers
Enplaned Revenue Passengers
September 2009**



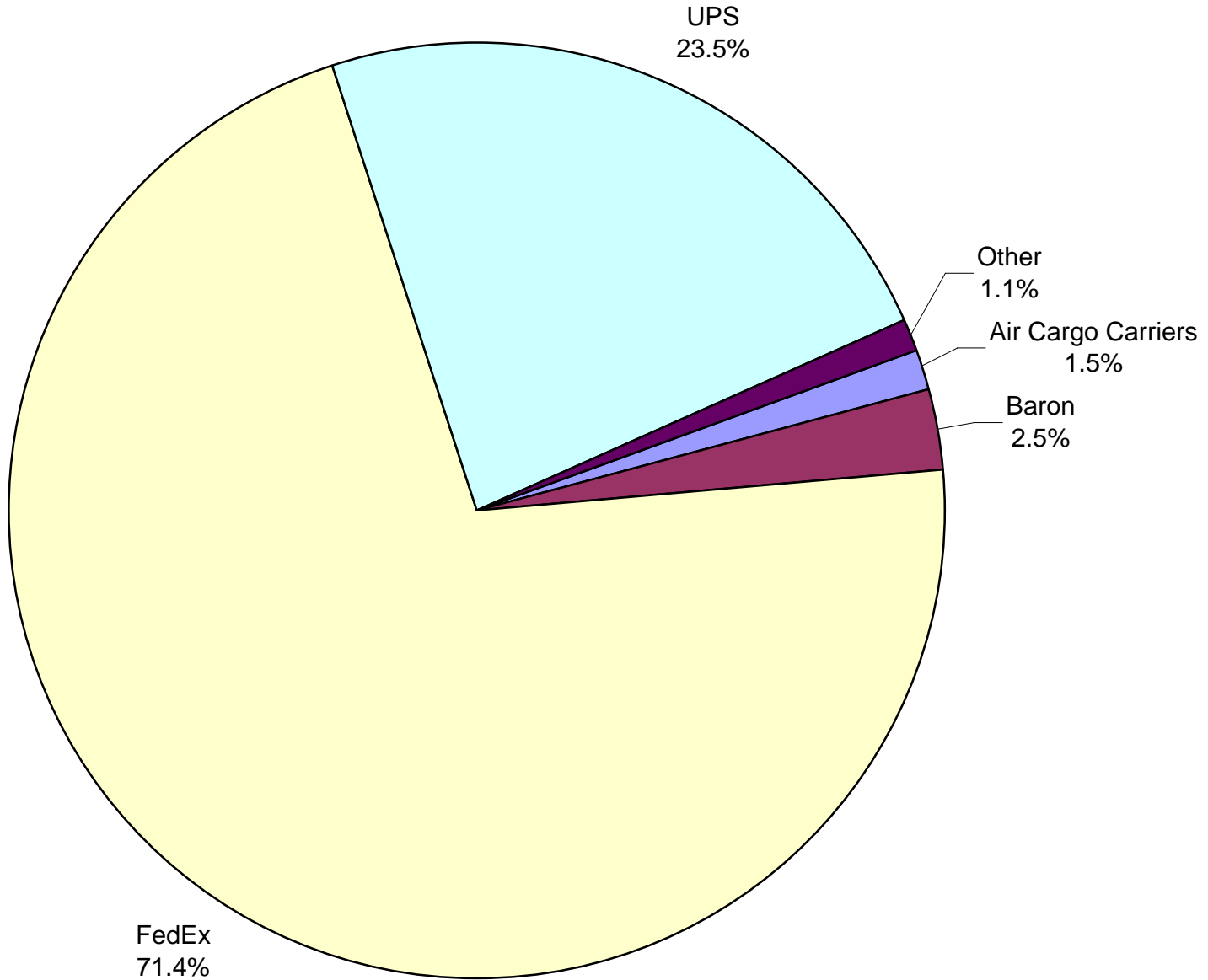
Other = Allegiant Air, Casino Express Airways, Jazz Air L.P. and Vision Airlines

Note: United Airlines percentage includes sub-contractors.

AUS Belly Freight Market Shares September 2009

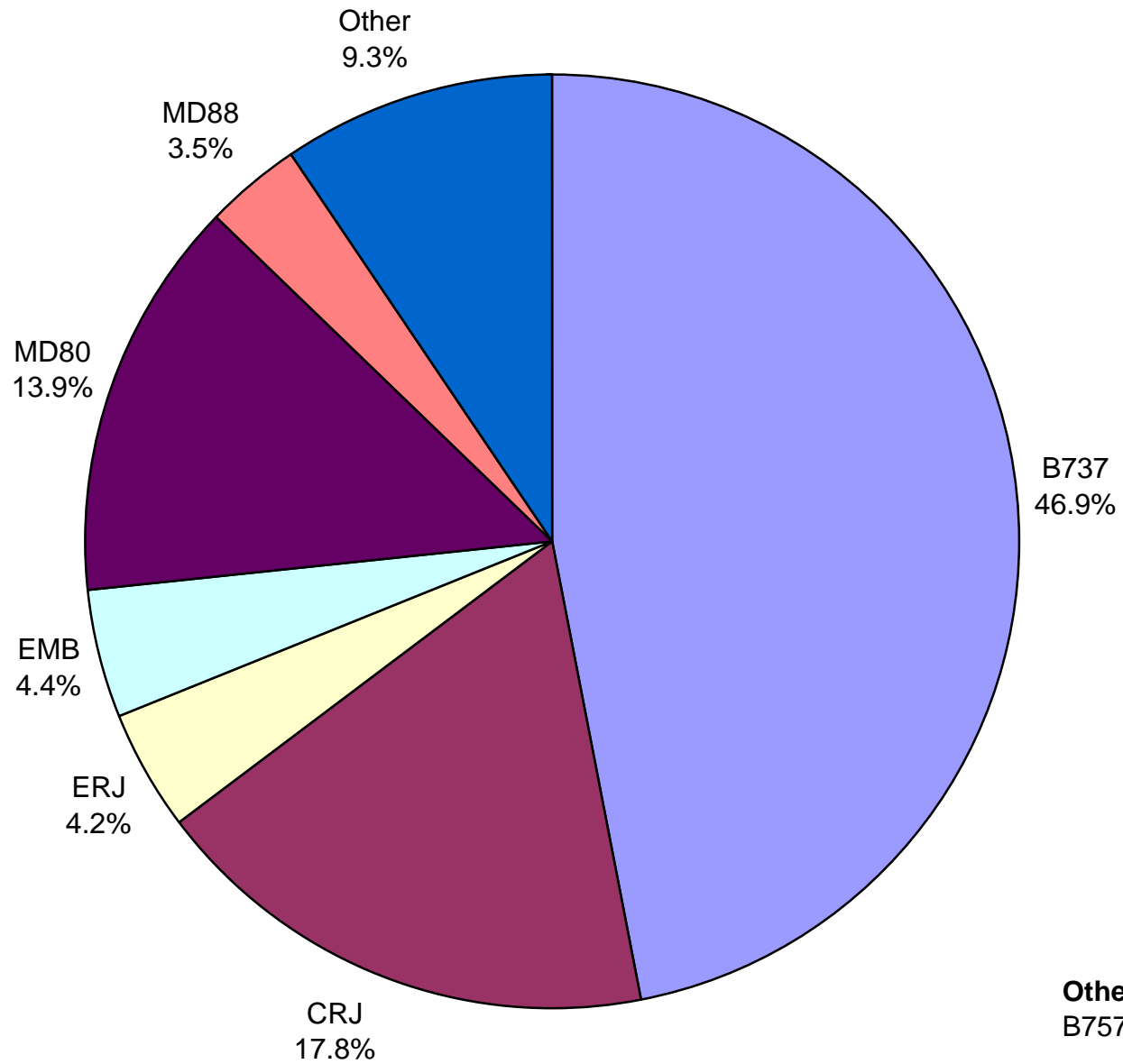


**Air Cargo Market Shares
September 2009**

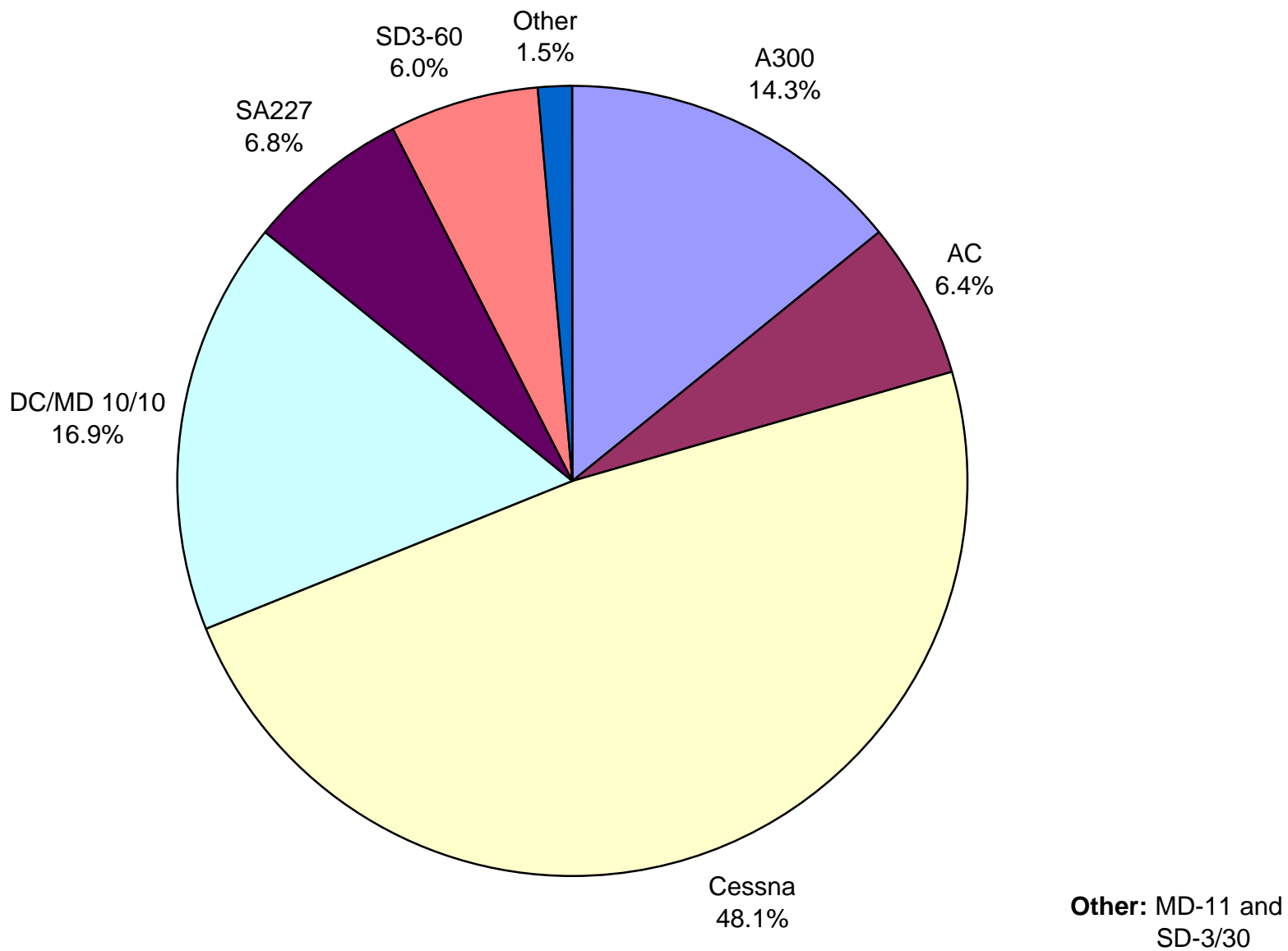


Other: Ameriflight, Lone Star Overnight L.P. and Martinaire Partners L.P.

**AUS Scheduled Passenger Aircraft Fleet Mix
September 2009**



**AUS Scheduled Cargo Aircraft Fleet Mix
September 2009**



Austin-Bergstrom International Airport

PAX Detail Report - September, 2009

| Company | 09/2009 | 09/2008 | Difference | Period Change | YTD 2009 | YTD 2008 | 2009 Difference | 2008 Share Change | Share | Share | Diff |
|---|----------------|----------------|--------------|---------------|------------------|------------------|-----------------|-------------------|-------|-------|------|
| Aero Mexico Airlines/Aerovias de Mexico, S.A. de C.V. | 0 | 0 | 0 | 0.0 | 0 | 10,584 | -10,584 | -100.0 | 0.0 | 0.2 | -0.2 |
| Aeroenlaces Nacionales S.A. DE C.V./vivaAerobus | 0 | 4,542 | -4,542 | -100.0 | 16,781 | 48,206 | -31,425 | -65.2 | 0.3 | 0.7 | -0.4 |
| Alaska Airlines, Inc. - Non-Signatory Operating Agreement | 14,231 | 0 | 14,231 | 0.0 | 22,971 | 0 | 22,971 | 0.0 | 0.4 | 0.0 | 0.4 |
| Allegiant Air | 240 | 0 | 240 | 0.0 | 1,988 | 2,723 | -735 | -27.0 | 0.0 | 0.0 | 0.0 |
| American Airlines, Inc | 139,889 | 158,692 | -18,803 | -11.8 | 1,389,311 | 1,713,533 | -324,222 | -18.9 | 22.7 | 24.9 | -2.1 |
| Atlantic Southeast Airlines, Inc. | 0 | 178 | -178 | -100.0 | 10,833 | 45,046 | -34,213 | -76.0 | 0.2 | 0.7 | -0.5 |
| Casino Express Airways | 288 | 288 | 0 | 0.0 | 1,756 | 1,635 | 121 | 7.4 | 0.0 | 0.0 | 0.0 |
| Chautauqua Airlines Inc. | 2,083 | 131 | 1,952 | 1,490.1 | 11,363 | 15,985 | -4,622 | -28.9 | 0.2 | 0.2 | 0.0 |
| Continental Airlines | 67,793 | 68,355 | -562 | -0.8 | 688,925 | 727,539 | -38,614 | -5.3 | 11.3 | 10.6 | 0.7 |
| Delta Airlines | 61,546 | 29,778 | 31,768 | 106.7 | 424,560 | 347,471 | 77,089 | 22.2 | 6.9 | 5.0 | 1.9 |
| Delta Airlines/Pinnacle | 0 | 10,321 | -10,321 | -100.0 | 10,699 | 10,959 | -260 | -2.4 | 0.2 | 0.2 | 0.0 |
| Express Jet Airlines, Inc. | 0 | 99 | -99 | -100.0 | 0 | 126,849 | -126,849 | -100.0 | 0.0 | 1.8 | -1.8 |
| Frontier Airlines | 17,434 | 17,214 | 220 | 1.3 | 172,151 | 114,224 | 57,927 | 50.7 | 2.8 | 1.7 | 1.2 |
| Frontier Airlines, Inc. - Pre Bankruptcy | 0 | 0 | 0 | 0.0 | 0 | 60,210 | -60,210 | -100.0 | 0.0 | 0.9 | -0.9 |
| GoJet Airlines d/b/a United Express | 6,301 | 2,525 | 3,776 | 149.5 | 59,896 | 2,525 | 57,371 | 2,272.1 | 1.0 | 0.0 | 0.9 |
| JAZZ Air LP | 359 | 1,843 | -1,484 | -80.5 | 13,399 | 11,832 | 1,567 | 13.2 | 0.2 | 0.2 | 0.0 |
| JetBlue Airways Corporation | 31,940 | 30,872 | 1,068 | 3.5 | 313,362 | 258,163 | 55,199 | 21.4 | 5.1 | 3.7 | 1.4 |
| Mesa Airlines Inc. | 33,676 | 28,633 | 5,043 | 17.6 | 366,139 | 226,051 | 140,088 | 62.0 | 6.0 | 3.3 | 2.7 |
| Miami Air International Inc. | 0 | 271 | -271 | -100.0 | 0 | 780 | -780 | -100.0 | 0.0 | 0.0 | 0.0 |
| Midwest Airlines, Inc. | 0 | 0 | 0 | 0.0 | 0 | 25,331 | -25,331 | -100.0 | 0.0 | 0.4 | -0.4 |
| MN Airlines, LLC d/b/a Sun Country | 0 | 0 | 0 | 0.0 | 0 | 102 | -102 | -100.0 | 0.0 | 0.0 | 0.0 |
| Northwest Airlines | 0 | 16,673 | -16,673 | -100.0 | 28,533 | 132,308 | -103,775 | -78.4 | 0.5 | 1.9 | -1.5 |
| Pace Airlines | 0 | 0 | 0 | 0.0 | 157 | 40 | 117 | 292.5 | 0.0 | 0.0 | 0.0 |
| Pinnacle Airlines, Inc. dba Northwest Airlink | 0 | 4,151 | -4,151 | -100.0 | 9,070 | 70,363 | -61,293 | -87.1 | 0.1 | 1.0 | -0.9 |
| Shuttle America Corporation | 8,750 | 3,425 | 5,325 | 155.5 | 54,921 | 74,784 | -19,863 | -26.6 | 0.9 | 1.1 | -0.2 |
| SkyWest Airlines, Inc | 2,965 | 19,121 | -16,156 | -84.5 | 65,827 | 153,139 | -87,312 | -57.0 | 1.1 | 2.2 | -1.1 |
| Southwest Airlines | 240,464 | 241,315 | -851 | -0.4 | 2,307,996 | 2,422,370 | -114,374 | -4.7 | 37.8 | 35.2 | 2.6 |
| Trans States Airlines, Inc | 0 | 2,197 | -2,197 | -100.0 | 6,844 | 13,884 | -7,040 | -50.7 | 0.1 | 0.2 | -0.1 |
| United Airlines, Inc. | 10,550 | 12,072 | -1,522 | -12.6 | 103,027 | 148,360 | -45,333 | -30.6 | 1.7 | 2.2 | -0.5 |
| US Airways Group, Inc. | 27,509 | 11,387 | 16,122 | 141.6 | 28,788 | 121,935 | -93,147 | -76.4 | 0.5 | 1.8 | -1.3 |
| USA Jet Airlines, Inc. | 0 | 0 | 0 | 0.0 | 0 | 16 | -16 | -100.0 | 0.0 | 0.0 | 0.0 |
| Vision Airlines, Inc. | 234 | 0 | 234 | 0.0 | 905 | 0 | 905 | 0.0 | 0.0 | 0.0 | 0.0 |
| Report Totals | 666,252 | 664,083 | 2,169 | 0.3% | 6,110,202 | 6,886,947 | -776,745 | -11.3% | | | |

Statistics Included in Report:

Domestic Passengers:

Enplaned Revenue, Deplaned Revenue, Through Revenue, Enplaned Non-Revenue, Deplaned Non-Revenue, Through Non-Revenue

International Passengers:

Enplaned Revenue, Deplaned Revenue, Through Revenue, Enplaned Non-Revenue, Deplaned Non-Revenue, Through Non-Revenue, South Terminal-Intl Enplaned Revenue, South Terminal-Intl Deplaned Revenue, South Terminal-Intl Through Revenue, South Terminal-Intl Enplaned Non-Revenue, South Terminal-Intl Deplaned Non-Revenue, South Terminal-Intl Through Non-Revenue

Austin-Bergstrom International Airport

Summary Landing Report

Landing Type: Total

| Month | 2009 | | 2008 | | 2007 | | % Change 2009 - 2008 | | % Change 2008 - 2007 | |
|-----------------------------------|--------|---------------|--------|---------------|--------|---------------|----------------------|---------|----------------------|--------|
| | Count | Weight | Count | Weight | Count | Weight | Count | Weight | Count | Weight |
| January | 4,170 | 470,332,445 | 4,995 | 508,563,011 | 4,269 | 461,169,144 | -16.52% | -7.52% | 17.01% | 10.28% |
| February | 3,797 | 422,370,904 | 4,707 | 477,510,902 | 4,084 | 433,092,352 | -19.33% | -11.55% | 15.25% | 10.26% |
| March | 4,152 | 463,150,645 | 5,057 | 511,086,453 | 4,693 | 498,304,509 | -17.90% | -9.38% | 7.76% | 2.57% |
| April | 4,079 | 449,905,157 | 4,853 | 498,467,860 | 4,659 | 485,924,900 | -15.95% | -9.74% | 4.16% | 2.58% |
| May | 4,151 | 460,790,244 | 5,213 | 542,161,220 | 5,116 | 524,923,078 | -20.37% | -15.01% | 1.90% | 3.28% |
| June | 4,222 | 465,414,109 | 5,252 | 551,158,994 | 5,006 | 521,808,372 | -19.61% | -15.56% | 4.91% | 5.62% |
| July | 4,396 | 482,073,439 | 5,097 | 553,506,814 | 5,245 | 543,679,941 | -13.75% | -12.91% | -2.82% | 1.81% |
| August | 4,325 | 473,499,273 | 5,006 | 550,432,204 | 5,453 | 559,884,838 | -13.60% | -13.98% | -8.20% | -1.69% |
| September | 4,056 | 453,926,115 | 4,261 | 481,973,814 | 5,107 | 513,882,056 | -4.81% | -5.82% | -16.57% | -6.21% |
| October | | | 4,550 | 518,286,513 | 5,373 | 539,788,979 | | | -15.32% | -3.98% |
| November | | | 4,200 | 480,619,098 | 5,053 | 515,341,963 | | | -16.88% | -6.74% |
| December | | | 4,322 | 492,132,192 | 4,997 | 511,272,858 | | | -13.51% | -3.74% |
| Totals for Selected Period | 37,348 | 4,141,462,331 | 44,441 | 4,674,861,272 | 43,632 | 4,542,669,190 | -15.96% | -11.41% | 1.85% | 2.91% |
| Yearly Totals | 37,348 | 4,141,462,331 | 57,513 | 6,165,899,075 | 59,055 | 6,109,072,990 | | | -2.61% | 0.93% |