

Austin-Bergstrom International Airport

Aviation Activity Report

	11/2008	11/2007	Percent Change	01/2008 - 11/2008	01/2007 - 11/2007	Percent Change
<u>Passenger Activity</u>						
Domestic Enplaned Revenue	322,453	358,961	-10.17	3,921,061	3,853,194	1.76
Domestic Deplaned Revenue	322,043	359,277	-10.36	3,924,178	3,870,084	1.40
Domestic Through Revenue	11,247	14,166	-20.61	176,226	198,213	-11.09
International Enplaned Revenue	877	1,125	-22.04	11,491	12,336	-6.85
International Deplaned Revenue	1,153	1,064	8.36	12,110	12,532	-3.37
International Through Revenue	0	0	0.00	0	0	0.00
Domestic Enplaned Non-Revenue	10,100	9,007	12.14	112,095	113,107	-0.89
Domestic Deplaned Non-Revenue	9,313	8,449	10.23	107,879	105,426	2.33
Domestic Through Non-Revenue	0	0	0.00	0	9	-100.00
International Enplaned Non-Revenue	25	0	0.00	205	0	100.00
International Deplaned Non-Revenue	21	0	0.00	233	0	100.00
International Through Non-Revenue	0	0	0.00	0	0	0.00
South Terminal-Intl Enplaned Revenue	2,504	0	0.00	30,076	0	100.00
South Terminal-Intl Deplaned Revenue	2,481	0	0.00	30,163	0	100.00
South Terminal-Intl Through Revenue	0	0	0.00	0	0	0.00
South Terminal-Intl Enplaned Non-Revenue	0	0	0.00	0	0	0.00
South Terminal-Intl Deplaned Non-Revenue	0	0	0.00	0	0	0.00
South Terminal-Intl Through Non-Revenue	0	0	0.00	0	0	0.00
Passenger Totals	682,217	752,049	-9.29	8,325,717	8,164,901	1.97

CURRENT PASSENGER RECORD = 869,308

RECORD SET = JUNE 2008

Aircraft Operations

Air Carrier	8,034	8,750	-8.18	97,273	94,953	2.44
Commuter & Air Taxi	1,407	2,860	-50.80	25,389	27,683	-8.29
Military	250	511	-51.08	4,565	5,263	-13.26
General Aviation						
Itinerant	5,064	6,500	-22.09	64,972	65,295	-0.49
Local	98	327	-70.03	2,372	3,731	-36.42
Total G.A.	5,162	6,827	-24.39	67,344	69,026	-2.44
Total Operations	14,853	18,948	-21.61	194,571	196,925	-1.20

Austin-Bergstrom International Airport

Aviation Activity Report

	11/2008	11/2007	Percent Change	01/2008 - 11/2008	01/2007 - 11/2007	Percent Change
<u>Cargo Activity</u>						
Mail						
Domestic Enplaned Mail	126,044	188,123	-33.00	1,983,577	1,484,603	33.61
Domestic Deplaned Mail	432,162	272,447	58.62	4,231,640	2,706,706	56.34
International Enplaned Mail	0	0	0.00	0	15	-100.00
International Deplaned Mail	0	0	0.00	0	15	-100.00
South Terminal-Intl Enplaned Mail	0	0	0.00	0	0	0.00
South Terminal-Intl Deplaned Mail	0	0	0.00	0	0	0.00
Mail Totals	558,206	460,570	21.20	6,215,217	4,191,339	48.29
Cargo						
Domestic Enplaned Cargo	6,395,319	8,588,689	-25.54	87,426,888	87,191,481	0.27
Domestic Deplaned Cargo	5,533,594	7,265,681	-23.84	70,690,389	76,471,720	-7.56
International Enplaned Cargo	295,081	502,214	-41.24	4,052,447	4,554,760	-11.03
International Deplaned Cargo	0	0	0.00	0	0	0.00
South Terminal-Intl Enplaned Cargo	0	0	0.00	0	0	0.00
South Terminal-Intl Deplaned Cargo	0	0	0.00	0	0	0.00
Cargo Totals	12,223,994	16,356,584	-25.27	162,169,724	168,217,961	-3.60
Belly Freight						
Domestic Enplaned Belly Freight	754,874	1,007,339	-25.06	10,441,580	13,262,688	-21.27
Domestic Deplaned Belly Freight	690,632	716,794	-3.65	8,794,494	8,049,071	9.26
International Enplaned Belly Freight	0	0	0.00	0	0	0.00
International Deplaned Belly Freight	0	0	0.00	0	0	0.00
South Terminal-Intl Enplaned Belly Frt	0	0	0.00	0	0	0.00
South Terminal-Intl Deplaned Belly Frt	0	0	0.00	0	0	0.00
Belly Freight Totals	1,445,506	1,724,133	-16.16	19,236,074	21,311,759	-9.74
Cargo Totals (Mail, Cargo, Belly Freight)	14,227,706	18,541,287	-23.26	187,621,015	193,721,059	-3.15

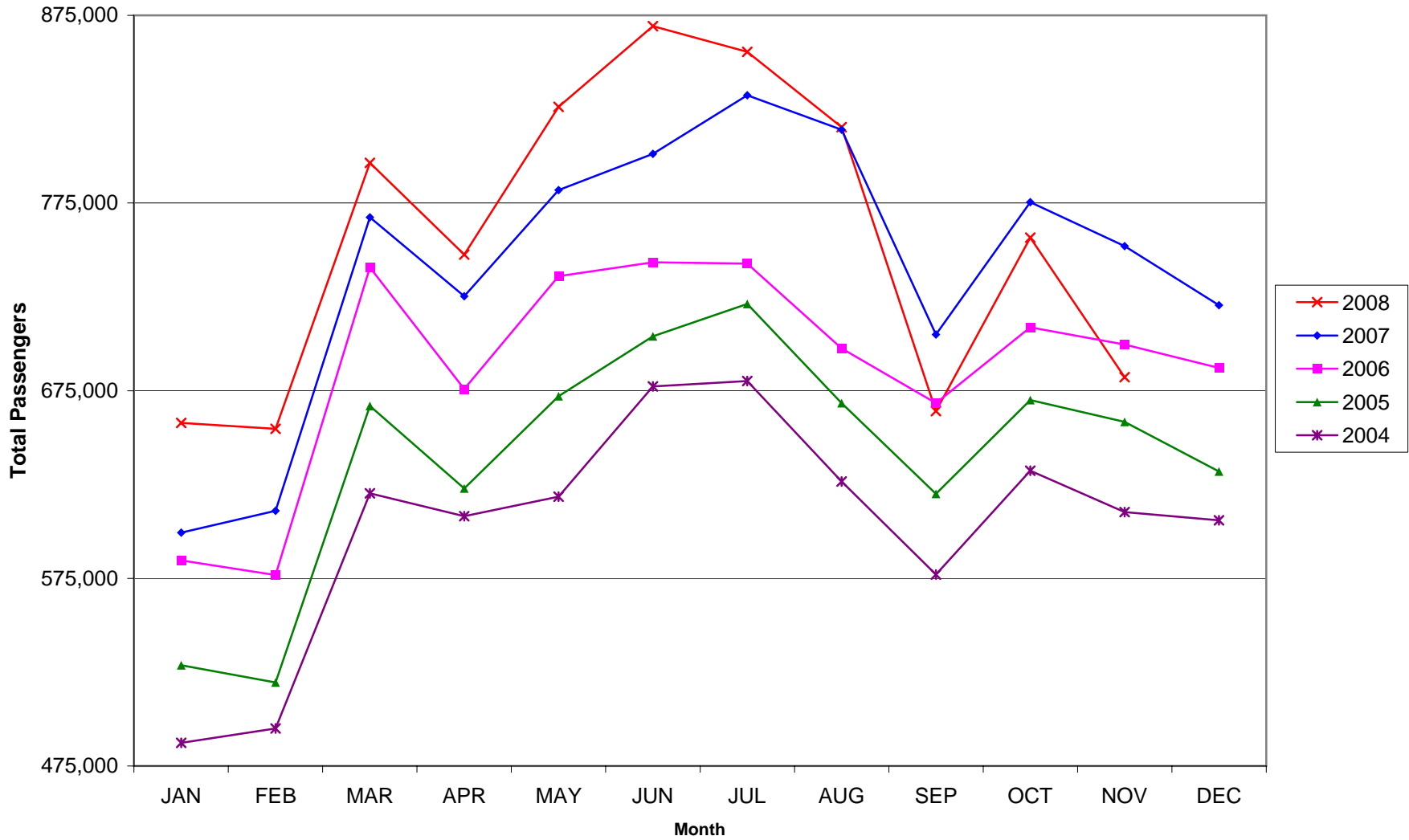
CURRENT CARGO RECORD = 40,215,518

RECORD SET = MARCH 2001

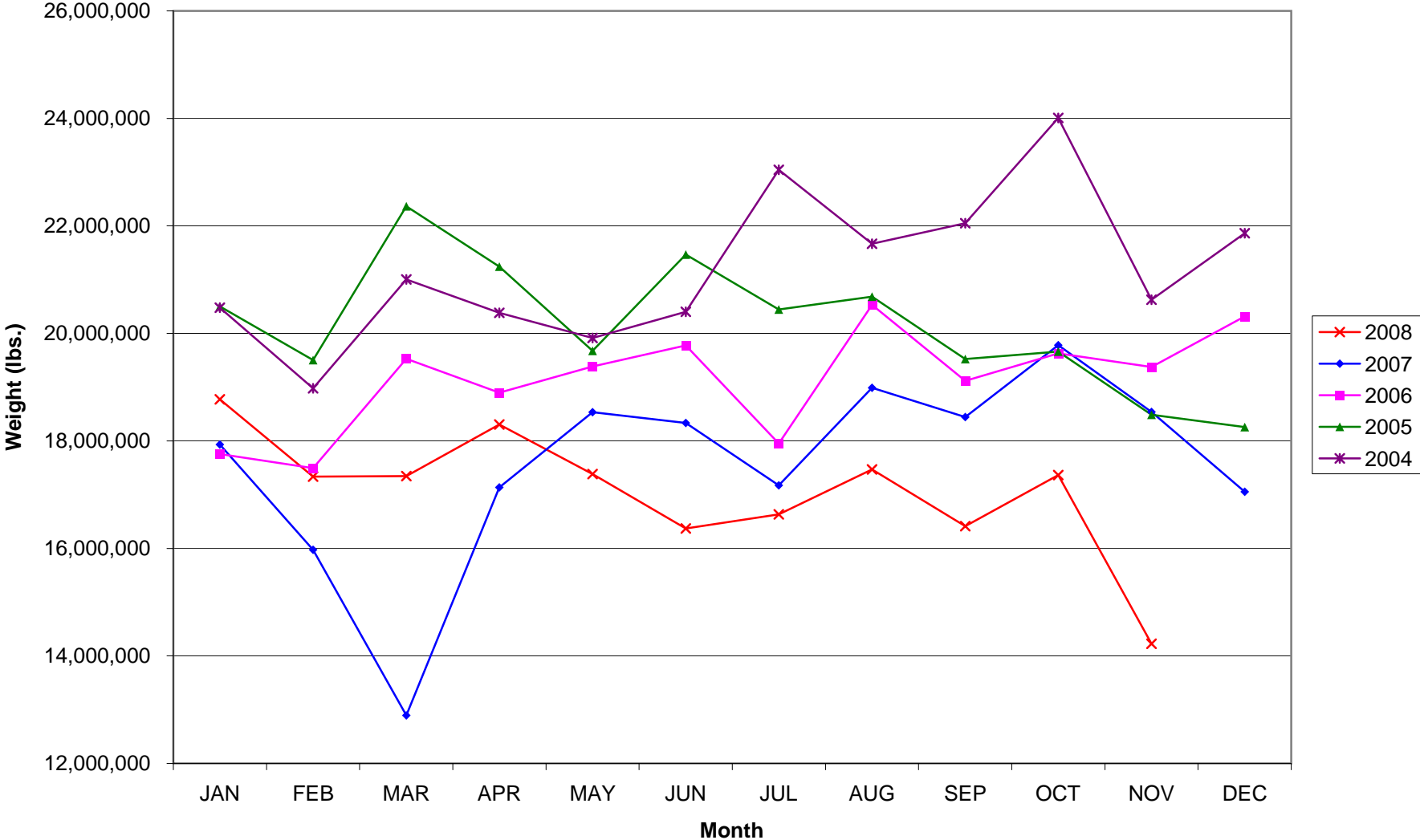
AUS – Airline Codes
November 2008

<u>Code</u>	<u>Carrier</u>
VB	Aeroenlaces Nacionales S.A. de C.V./vivaAerobus
G4	Allegiant Air
AA	American Airlines, Inc.
EV	Atlantic Southeast Airlines, Inc. (Delta Connection)
XP	Casino Express Airways
CO	Continental Airlines
DL	Delta Airlines
F9	Frontier Airlines DIP
QK	Jazz Air LP
B6	JetBlue Airways Corp.
YV	Mesa Airlines, Inc.
NW	Northwest Airlines
9E	Pinnacle Airlines, Inc. (Northwest AirlinK & Delta Connection)
S5	Shuttle America Corp. (Delta Connection)
OO	SkyWest Airlines, Inc.
WN	Southwest Airlines
AX	Trans States Airlines, Inc.
UA	United Airlines, Inc. (GoJet Airlines dba United Express)
US	US Airways Group, Inc.

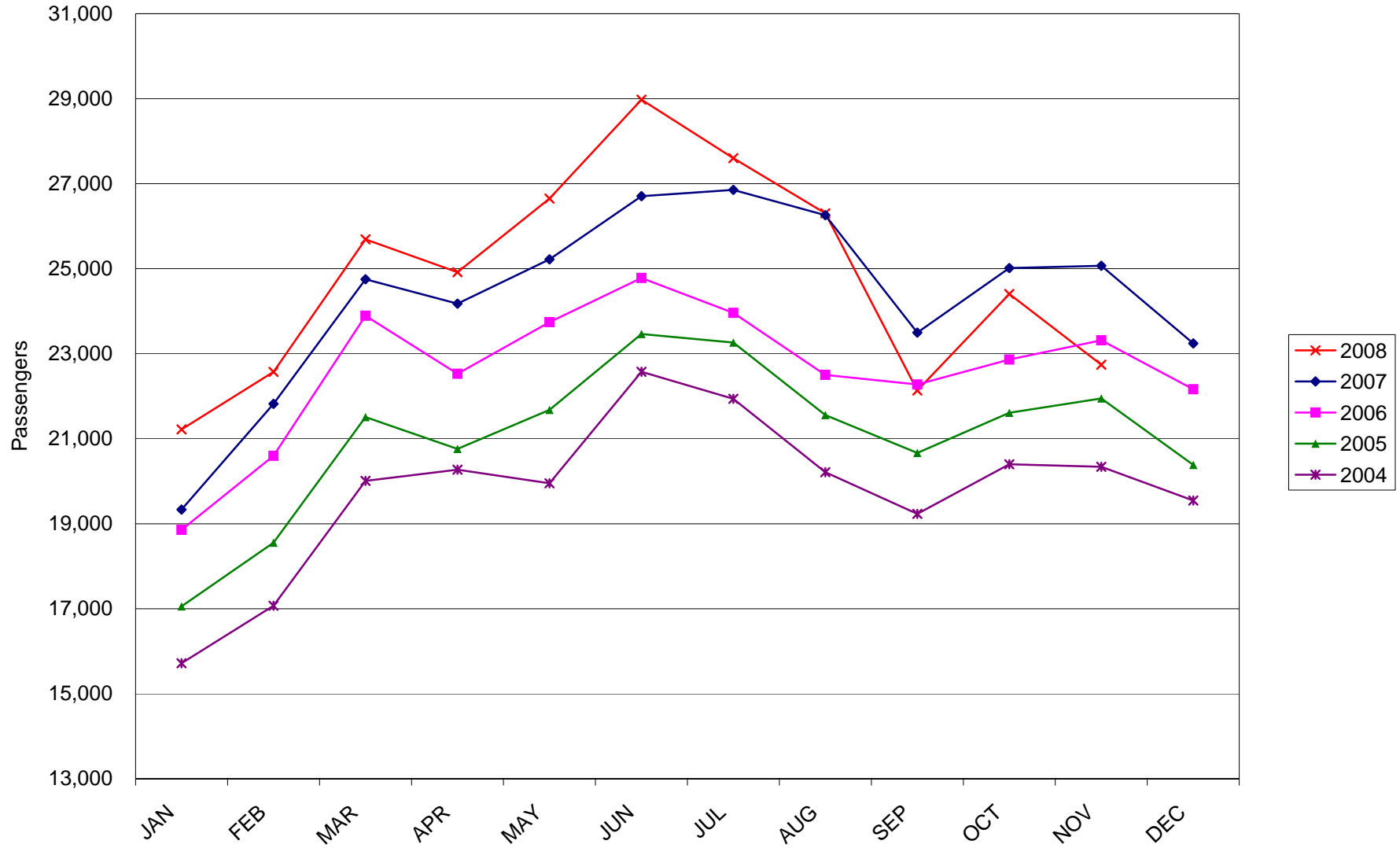
AUSTIN PASSENGER TRAFFIC



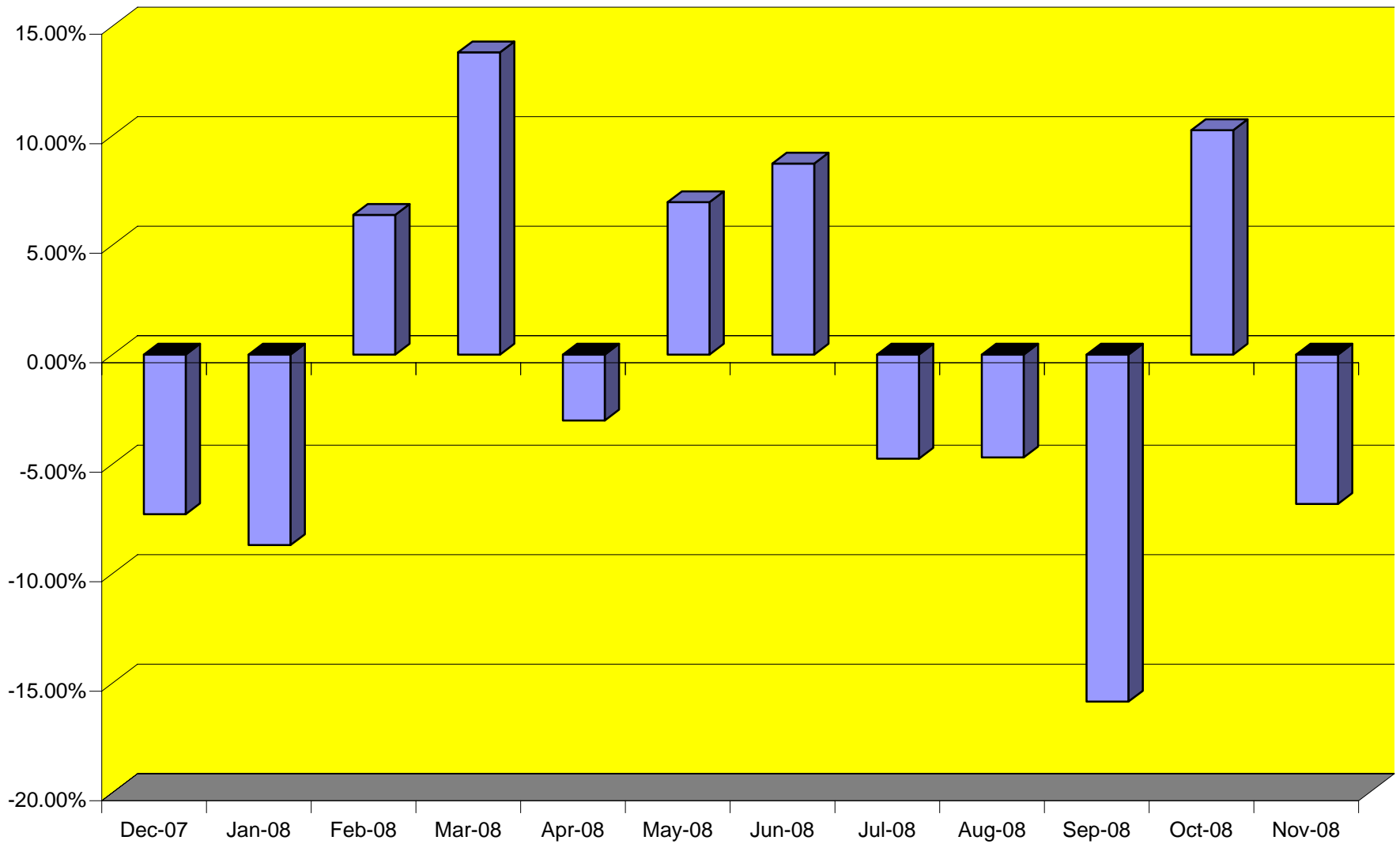
TOTAL CARGO POUNDAGE - AUSTIN, TEXAS



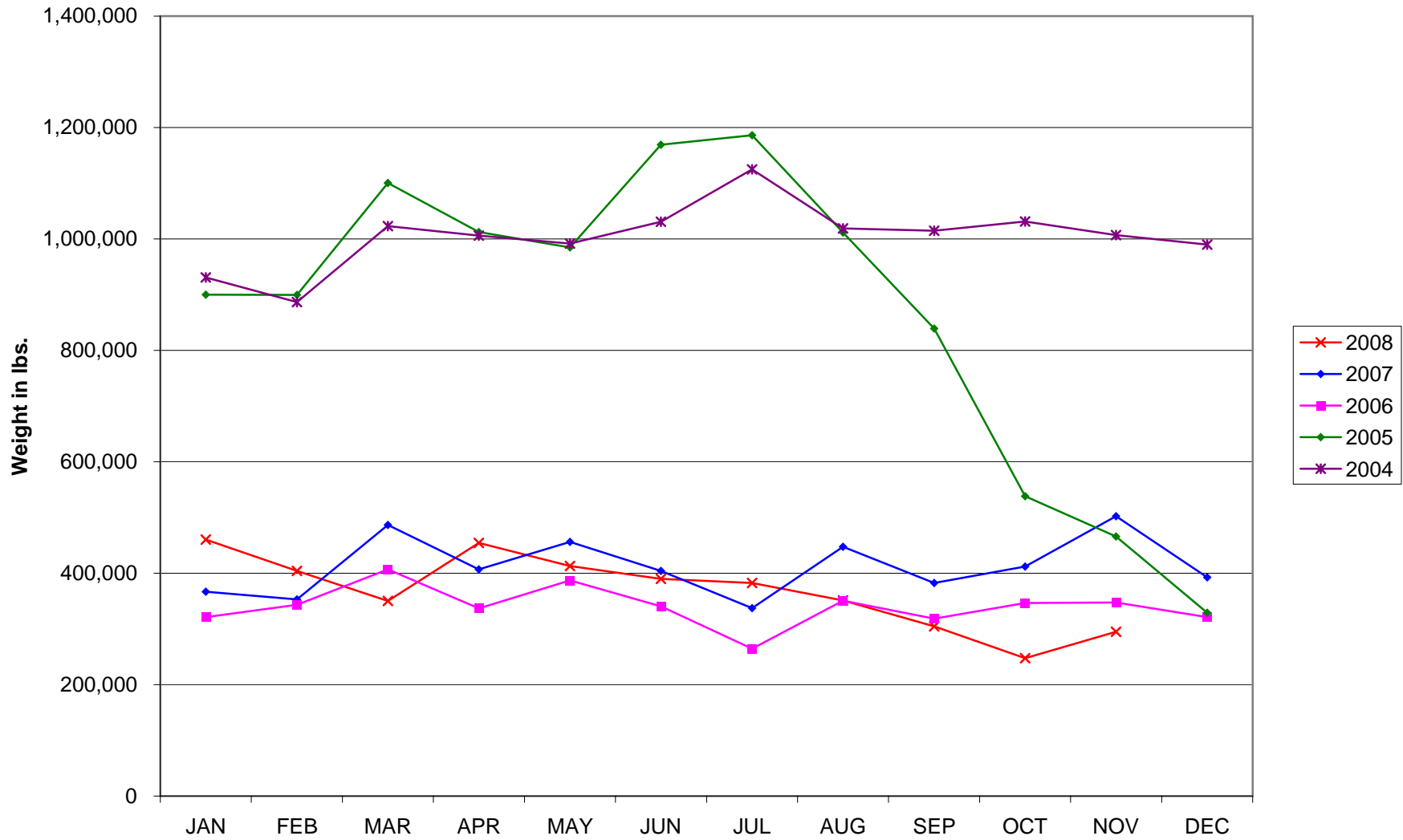
Average Daily Passengers



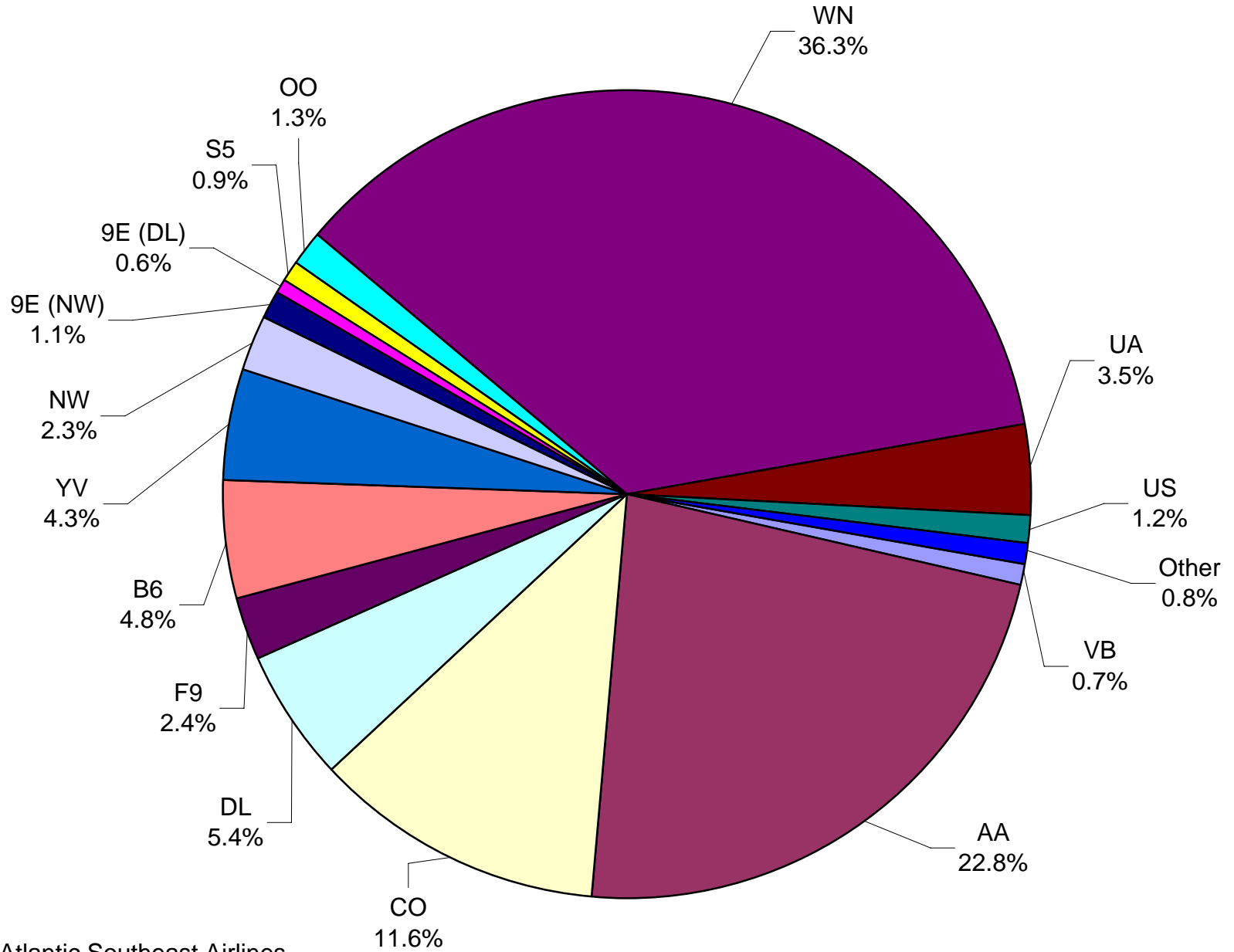
Monthly % Change in Average Daily Passengers



History of International Air Cargo



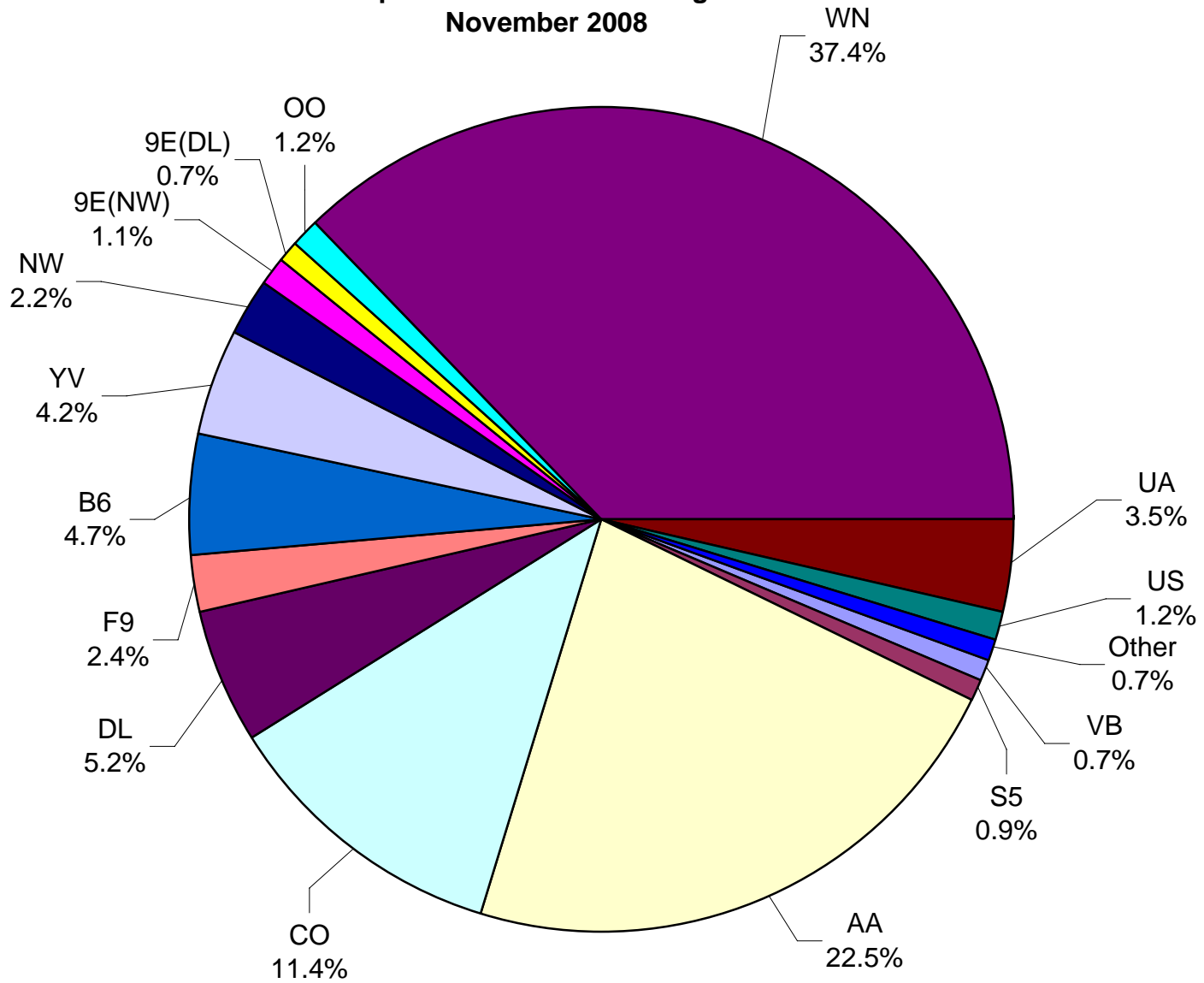
Total Passengers November 2008



Other = Allegiant Air, Atlantic Southeast Airlines (Delta Connection), Casino Express Airways, Jazz Air L.P. and Trans States Airlines.

Note: United Airlines percentage includes sub-contractors.

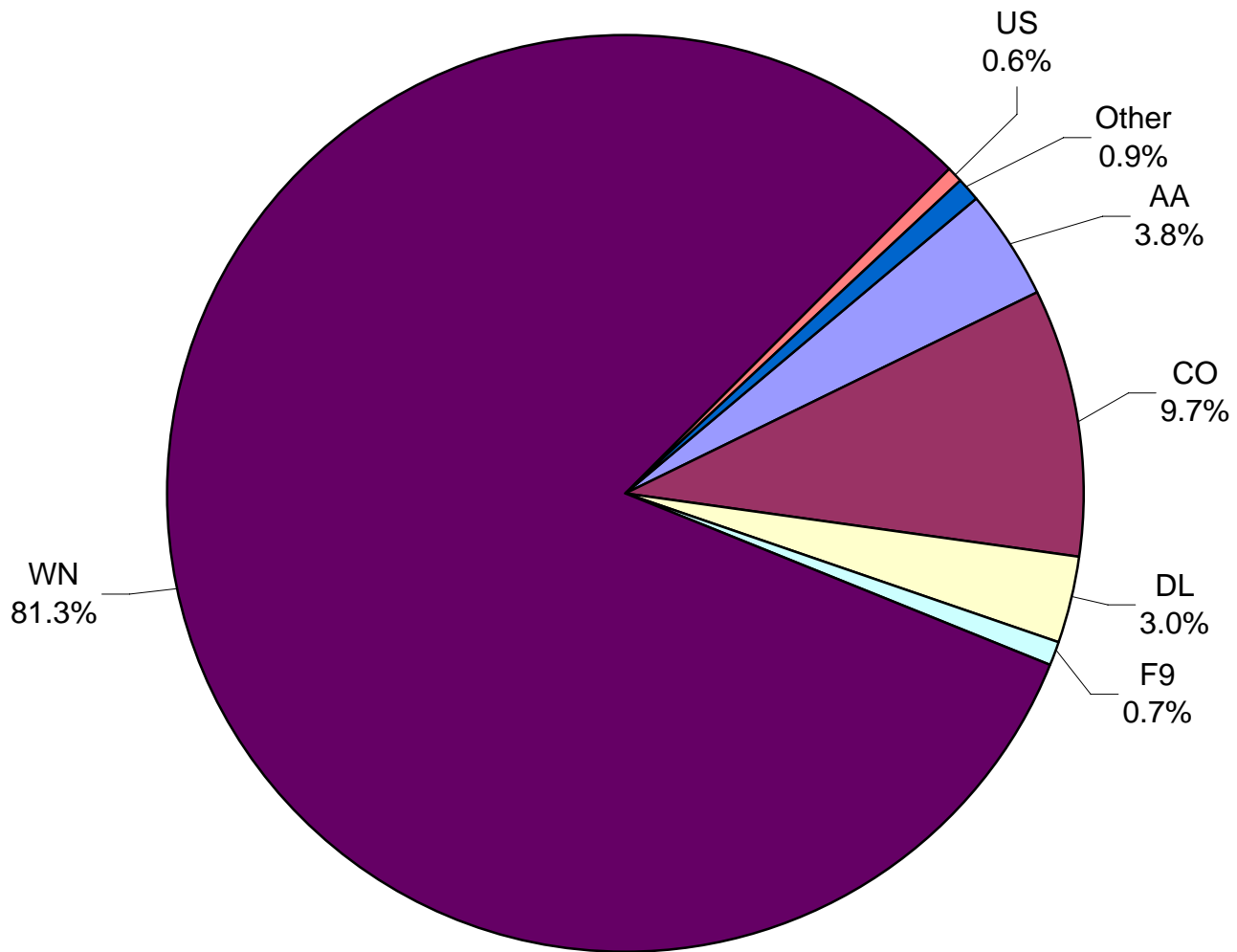
**All Passenger Carriers
Enplaned Revenue Passengers
November 2008**



Other = Allegiant Air, Atlantic Southeast Airlines, Casino Express Airways, Jazz Air LP and Trans States Airlines Inc.

Note: United Airlines percentage includes sub-contractors.

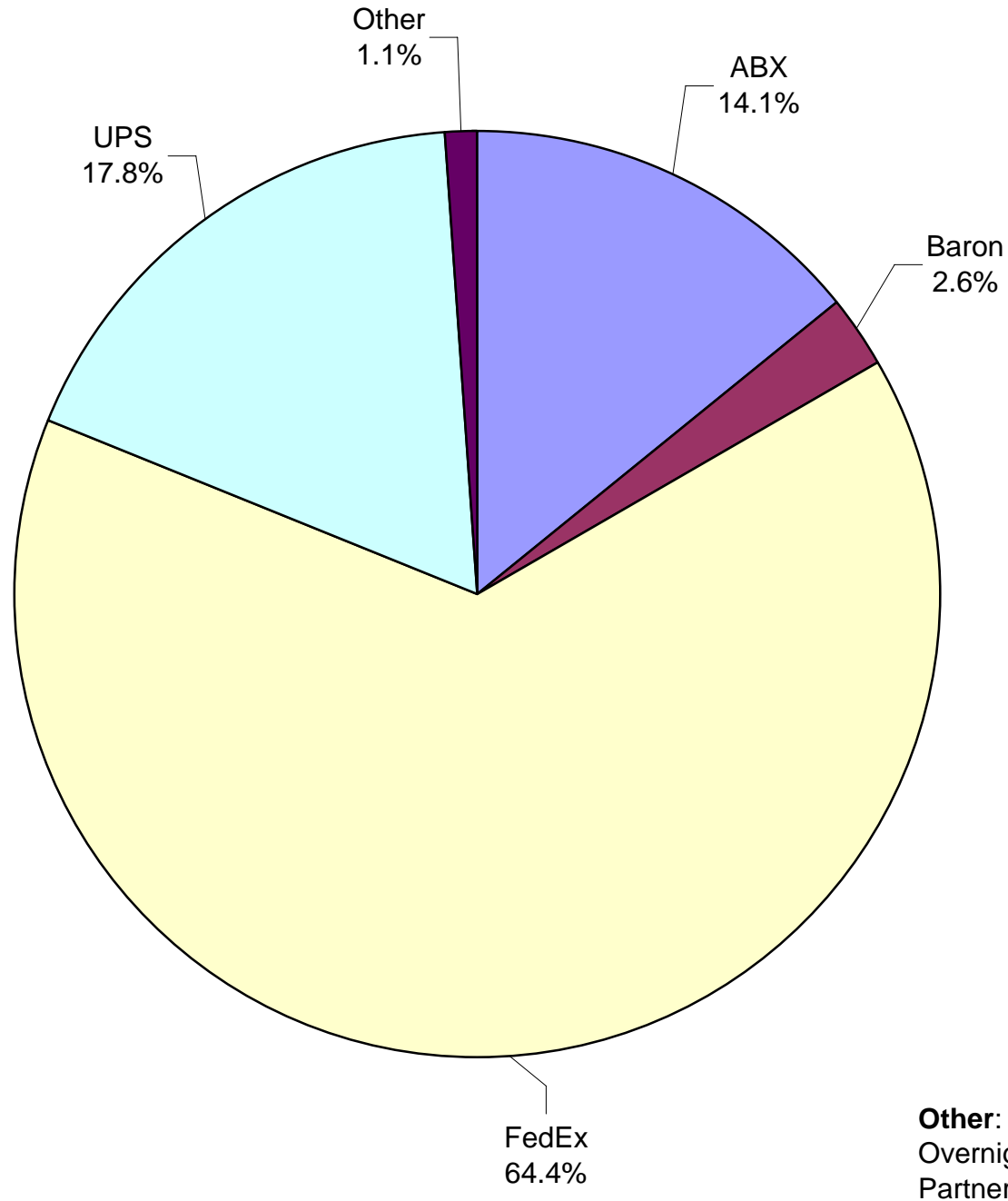
**AUS Belly Freight Market Shares
November 2008**



Other = Mesa Airlines, Inc., Northwest Airlines, Pinnacle Airlines, Inc.(NW & DL) and United Airlines, Inc.

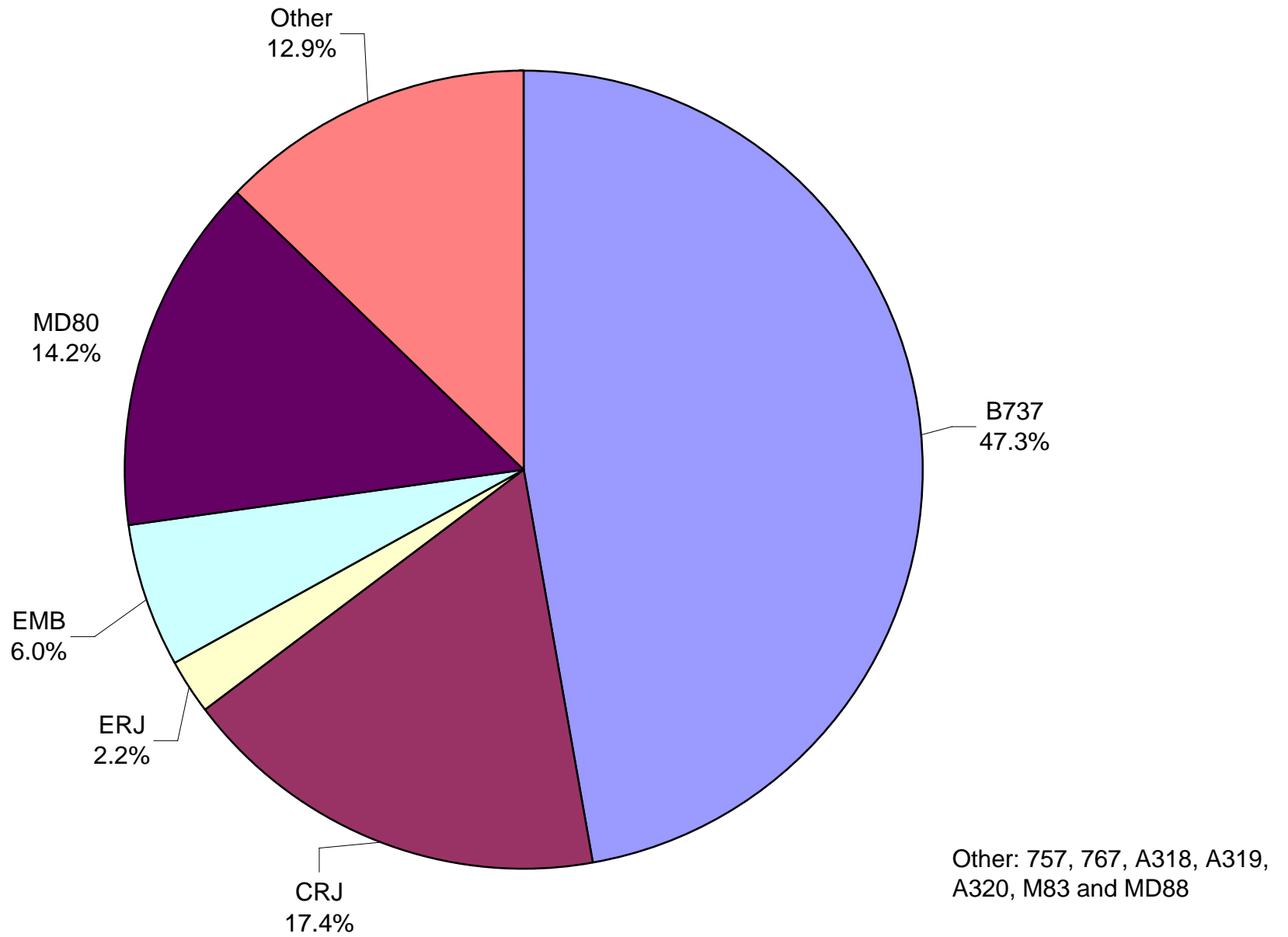
Note: United Airlines percentage includes sub-contractors.

**Air Cargo Market Shares
November 2008**

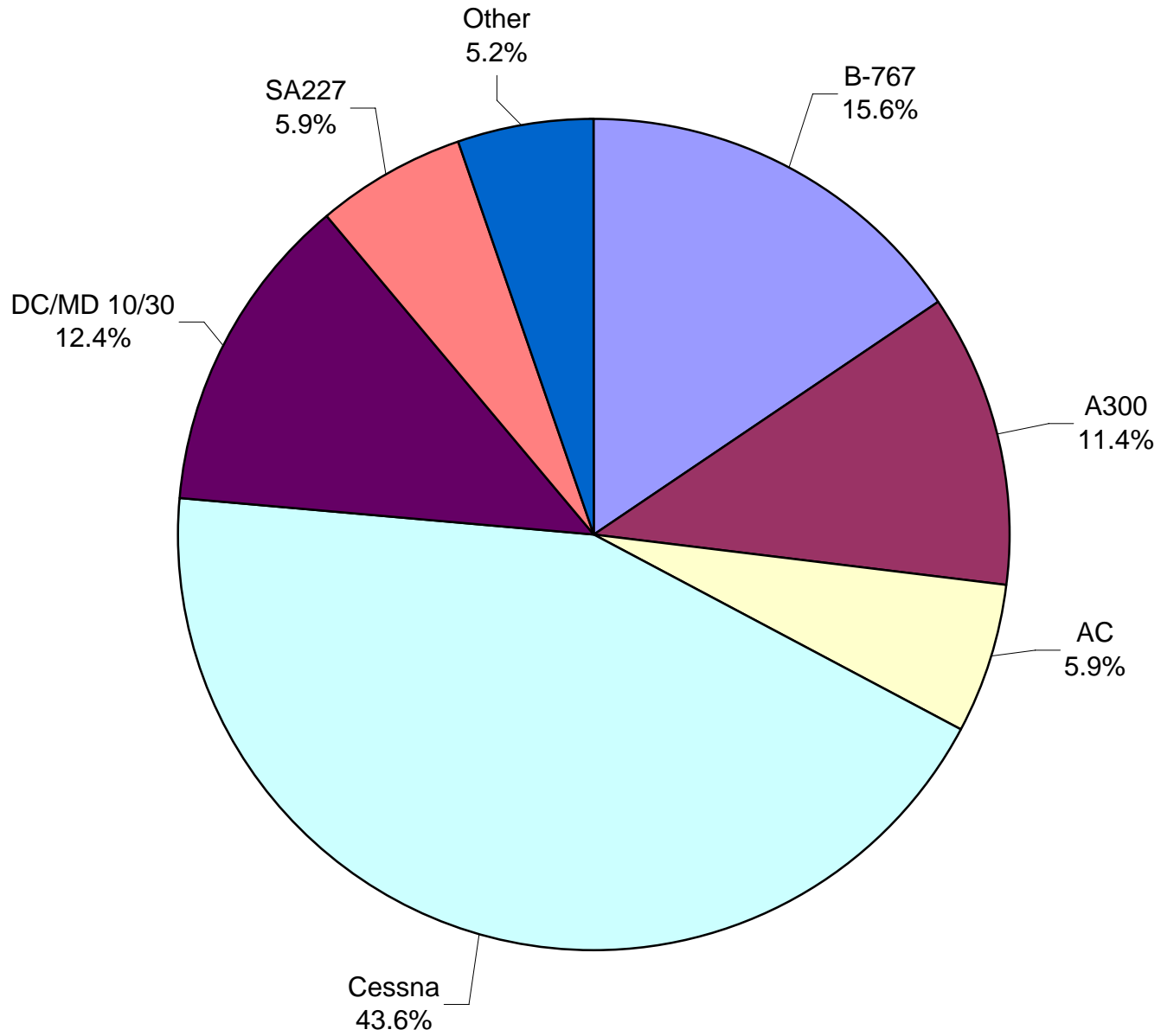


Other: Ameriflight, Lone Star Overnight L.P. and Martinaire Partners L.P.

**AUS Scheduled Passenger Aircraft Fleet Mix
November 2008**



**AUS Scheduled Cargo Aircraft Fleet Mix
November 2008**



Other: B757, DC/MD 10/10, and MD-11

Austin-Bergstrom International Airport

PAX Detail Report - November, 2008

Company	11/2008	11/2007	Period		YTD 2008	YTD 2007	YTD		2008 Share	2007 Share	Share Diff
			Difference	Change			Difference	Change			
Aero Mexico Airlines/Aerovias de Mexico, S.A. de C.V.	0	2,189	-2,189	-100.0	10,584	24,868	-14,284	-57.4	0.1	0.3	-0.2
Aeroenlaces Nacionales S.A. DE C.V./vivaAerobus	4,985	0	4,985	0.0	57,362	0	57,362	0.0	0.7	0.0	0.7
Allegiant Air	156	269	-113	-42.0	3,133	1,156	1,977	171.0	0.0	0.0	0.0
American Airlines, Inc	155,966	204,495	-48,529	-23.7	2,043,345	2,192,163	-148,818	-6.8	24.5	26.8	-2.3
Atlantic Southeast Airlines, Inc.	140	8,748	-8,608	-98.4	45,186	48,361	-3,175	-6.6	0.5	0.6	0.0
Casino Express Airways	300	0	300	0.0	1,935	1,475	460	31.2	0.0	0.0	0.0
Chautauqua Airlines Inc.	0	0	0	0.0	16,026	68	15,958	23,467.6	0.2	0.0	0.2
Continental Airlines	79,199	93,145	-13,946	-15.0	889,911	957,274	-67,363	-7.0	10.7	11.7	-1.0
Delta Airlines	36,712	33,440	3,272	9.8	421,878	421,752	126	0.0	5.1	5.2	-0.1
Delta Airlines/Pinnacle	3,853	0	3,853	0.0	22,458	0	22,458	0.0	0.3	0.0	0.3
Express Jet Airlines, Inc.	0	21,648	-21,648	-100.0	126,849	155,059	-28,210	-18.2	1.5	1.9	-0.4
Frontier Airlines DIP	16,631	0	16,631	0.0	148,849	0	148,849	0.0	1.8	0.0	1.8
Frontier Airlines, Inc. - Pre Bankruptcy	0	20,844	-20,844	-100.0	60,210	202,195	-141,985	-70.2	0.7	2.5	-1.8
GoJet Airlines d/b/a United Express	12,217	0	12,217	0.0	17,754	0	17,754	0.0	0.2	0.0	0.2
Grand Holdings, Inc DBA Champion Air	0	0	0	0.0	0	412	-412	-100.0	0.0	0.0	0.0
JAZZ Air LP	2,076	0	2,076	0.0	16,332	0	16,332	0.0	0.2	0.0	0.2
JetBlue Airways Corporation	32,690	19,194	13,496	70.3	326,694	219,500	107,194	48.8	3.9	2.7	1.2
Mesa Airlines Inc.	29,301	12,797	16,504	129.0	286,509	228,024	58,485	25.6	3.4	2.8	0.6
Miami Air International Inc.	0	0	0	0.0	780	334	446	133.5	0.0	0.0	0.0
Midwest Airlines, Inc.	0	3,484	-3,484	-100.0	25,331	8,167	17,164	210.2	0.3	0.1	0.2
MN Airlines, LLC d/b/a Sun Country	0	272	-272	-100.0	102	272	-170	-62.5	0.0	0.0	0.0
Northwest Airlines	15,484	14,089	1,395	9.9	167,036	139,916	27,120	19.4	2.0	1.7	0.3
Pace Airlines	0	0	0	0.0	40	76	-36	-47.4	0.0	0.0	0.0
Pinnacle Airlines, Inc. dba Northwest Airlink	7,491	7,234	257	3.6	82,459	90,853	-8,394	-9.2	1.0	1.1	-0.1
Shuttle America Corporation	6,299	10,131	-3,832	-37.8	86,161	173,445	-87,284	-50.3	1.0	2.1	-1.1
SkyWest Airlines, Inc	8,806	19,449	-10,643	-54.7	182,531	173,341	9,190	5.3	2.2	2.1	0.1
Southwest Airlines	247,430	247,450	-20	0.0	2,951,896	2,754,095	197,801	7.2	35.5	33.7	1.7
Trans States Airlines, Inc	2,499	0	2,499	0.0	18,961	20,439	-1,478	-7.2	0.2	0.3	0.0
United Airlines, Inc.	11,716	16,266	-4,550	-28.0	172,935	191,969	-19,034	-9.9	2.1	2.4	-0.3
US Airways Group, Inc.	8,266	16,905	-8,639	-51.1	142,454	159,687	-17,233	-10.8	1.7	2.0	-0.2
USA Jet Airlines, Inc.	0	0	0	0.0	16	0	16	0.0	0.0	0.0	0.0
Report Totals	682,217	752,049	-69,832	-9.3%	8,325,717	8,164,901	160,816	2.0%			

Statistics Included in Report:

Domestic Passengers:

Enplaned Revenue, Deplaned Revenue, Through Revenue, Enplaned Non-Revenue, Deplaned Non-Revenue, Through Non-Revenue

International Passenger:

Enplaned Revenue, Deplaned Revenue, Through Revenue, Enplaned Non-Revenue, Deplaned Non-Revenue, Through Non-Revenue, South Terminal-Int'l Enplaned Revenue, South Terminal-Int'l Deplaned Revenue, South Terminal-Int'l Through Revenue, South Terminal-Int'l Enplaned Non-Revenue, South Terminal-Int'l Deplaned Non-Revenue, South Terminal-Int'l Through Non-Revenue

Austin-Bergstrom International Airport

Summary Landing Report

Landing Type: Total

Month	2008		2007		2006		% Change 2008 - 2007		% Change 2007 - 2006	
	Count	Weight	Count	Weight	Count	Weight	Count	Weight	Count	Weight
January	4,994	508,546,911	4,268	461,157,264	4,314	454,270,179	17.01%	10.28%	-1.07%	1.52%
February	4,707	477,510,902	4,081	432,333,052	4,039	431,045,336	15.34%	10.45%	1.04%	0.30%
March	5,057	511,086,453	4,693	498,304,509	4,750	489,668,305	7.76%	2.57%	-1.20%	1.76%
April	4,853	498,467,860	4,657	485,905,500	4,513	460,099,145	4.21%	2.59%	3.19%	5.61%
May	5,213	542,161,220	5,116	524,923,078	4,697	488,433,026	1.90%	3.28%	8.92%	7.47%
June	5,252	551,158,994	5,005	521,795,072	4,602	473,433,518	4.94%	5.63%	8.76%	10.22%
July	5,097	553,506,814	5,243	543,571,241	4,597	474,383,579	-2.78%	1.83%	14.05%	14.58%
August	5,005	550,393,207	5,452	559,875,138	4,699	487,707,507	-8.20%	-1.69%	16.02%	14.80%
September	4,260	481,912,614	5,105	513,849,856	4,463	468,374,570	-16.55%	-6.22%	14.38%	9.71%
October	4,550	518,348,013	5,373	539,788,979	4,743	495,762,514	-15.32%	-3.97%	13.28%	8.88%
November	4,200	480,660,098	5,052	515,328,663	4,487	476,027,737	-16.86%	-6.73%	12.59%	8.26%
December			4,997	511,272,858	4,596	484,901,631			8.72%	5.44%
Totals for Selected Period	53,188	5,673,753,086	54,045	5,596,832,352	49,904	5,199,205,416	-1.59%	1.37%	8.30%	7.65%
Yearly Totals	53,188	5,673,753,086	59,042	6,108,105,210	54,500	5,684,107,047			8.33%	7.46%