

Austin-Bergstrom International Airport

Aviation Activity Report

	05/2009	05/2008	Percent Change	01/2009 - 05/2009	01/2008 - 05/2008	Percent Change
<u>Passenger Activity</u>						
Domestic Enplaned Revenue	334,976	391,533	-14.45	1,513,771	1,741,875	-13.10
Domestic Deplaned Revenue	331,961	382,691	-13.26	1,519,811	1,744,524	-12.88
Domestic Through Revenue*	0	15,347	-100.00	0	81,764	-100.00
International Enplaned Revenue	760	1,797	-57.71	3,778	5,100	-25.92
International Deplaned Revenue	661	1,730	-61.79	3,792	4,878	-22.26
International Through Revenue*	0	0	0.00	0	0	0.00
Domestic Enplaned Non-Revenue	9,827	10,739	-8.49	46,452	46,975	-1.11
Domestic Deplaned Non-Revenue	10,935	10,753	1.69	45,408	45,804	-0.86
Domestic Through Non-Revenue*	0	0	0.00	0	0	0.00
International Enplaned Non-Revenue	30	31	-3.23	151	31	387.10
International Deplaned Non-Revenue	19	28	-32.14	162	28	478.57
International Through Non-Revenue*	0	0	0.00	0	0	0.00
South Terminal-Intl Enplaned Revenue	1,297	5,981	-78.31	8,095	5,981	35.35
South Terminal-Intl Deplaned Revenue	1,417	5,562	-74.52	8,686	5,562	56.17
South Terminal-Intl Through Revenue*	0	0	0.00	0	0	0.00
South Terminal-Intl Enplaned Non-Revenue	0	0	0.00	0	0	0.00
South Terminal-Intl Deplaned Non-Revenue	0	0	0.00	0	0	0.00
South Terminal-Intl Through Non-Revenue*	0	0	0.00	0	0	0.00
Passenger Totals	691,883	826,192	-16.26	3,150,106	3,682,522	-14.46

CURRENT PASSENGER RECORD = 869,308

RECORD SET = JUNE 2008

Aircraft Operations

Air Carrier	7,727	9,405	-17.84	38,460	43,935	-12.46
Commuter & Air Taxi	1,358	2,690	-49.52	6,873	13,884	-50.50
Military	844	487	73.31	2,394	2,665	-10.17
General Aviation						
Itinerant	5,164	6,466	-20.14	23,711	31,120	-23.81
Local	134	298	-55.03	855	1,246	-31.38
Total G.A.	5,298	6,764	-21.67	24,566	32,366	-24.10
Total Operations	15,227	19,346	-21.29	72,293	92,850	-22.14

*Please note that as of January 1, 2009, Through Passengers will no longer be tracked.

Austin-Bergstrom International Airport

Aviation Activity Report

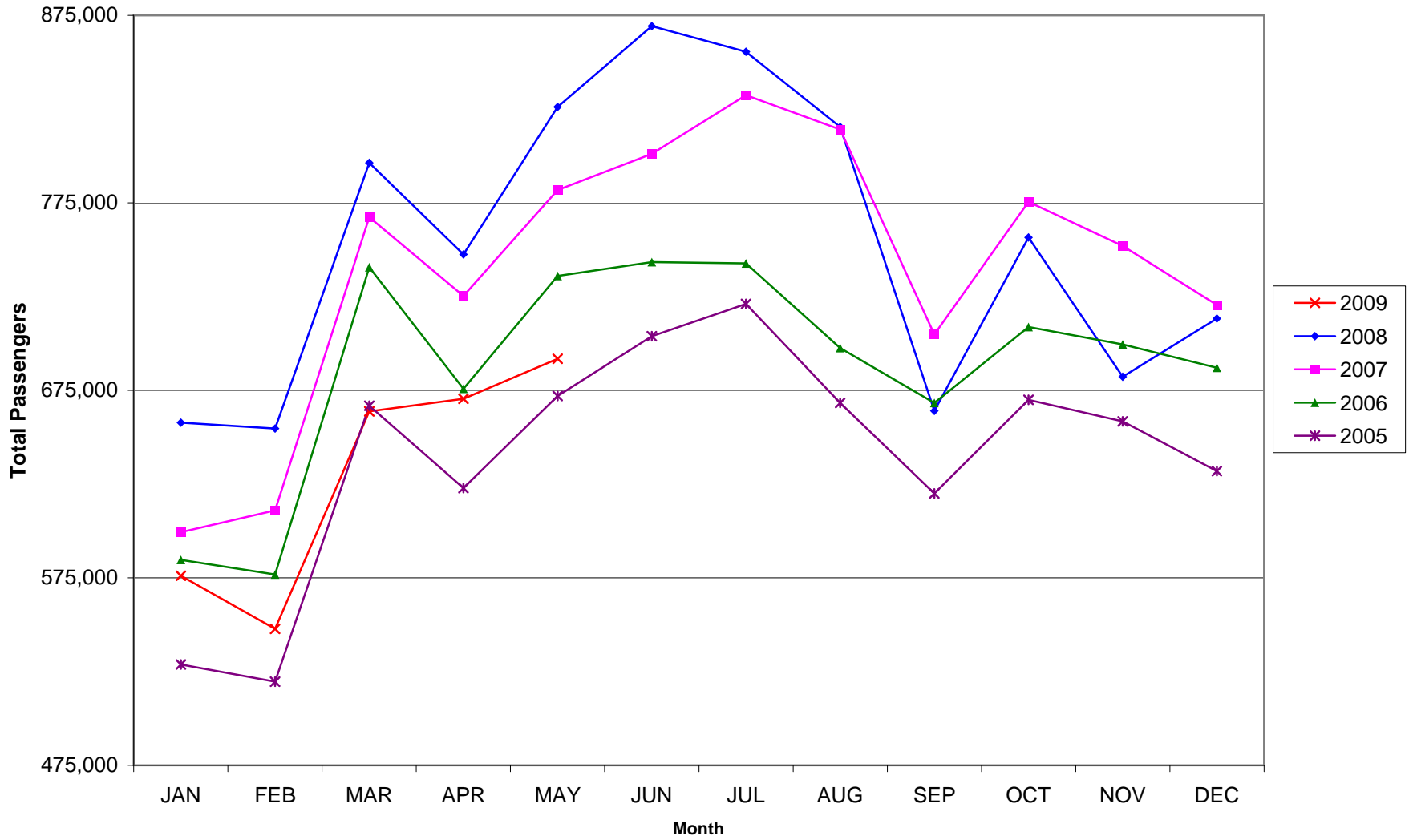
	05/2009	05/2008	Percent Change	01/2009 - 05/2009	01/2008 - 05/2008	Percent Change
<u>Cargo Activity</u>						
Mail						
Domestic Enplaned Mail	73,683	204,244	-63.92	544,961	911,542	-40.22
Domestic Deplaned Mail	285,977	399,123	-28.35	1,850,075	1,632,489	13.33
International Enplaned Mail	0	0	0.00	0	0	0.00
International Deplaned Mail	0	0	0.00	0	0	0.00
South Terminal-Intl Enplaned Mail	0	0	0.00	0	0	0.00
South Terminal-Intl Deplaned Mail	0	0	0.00	0	0	0.00
Mail Totals	359,660	603,367	-40.39	2,395,036	2,544,031	-5.86
Cargo						
Domestic Enplaned Cargo	6,114,980	8,145,784	-24.93	29,363,471	41,664,221	-29.52
Domestic Deplaned Cargo	5,212,394	6,512,736	-19.97	24,797,432	33,859,996	-26.76
International Enplaned Cargo	249,473	413,083	-39.61	1,390,362	2,081,858	-33.22
International Deplaned Cargo	0	0	0.00	0	0	0.00
South Terminal-Intl Enplaned Cargo	0	0	0.00	0	0	0.00
South Terminal-Intl Deplaned Cargo	0	0	0.00	0	0	0.00
Cargo Totals	11,576,847	15,071,603	-23.19	55,551,265	77,606,075	-28.42
Belly Freight						
Domestic Enplaned Belly Freight	647,351	875,109	-26.03	3,660,296	4,976,842	-26.45
Domestic Deplaned Belly Freight	485,203	830,833	-41.60	2,697,018	4,013,439	-32.80
International Enplaned Belly Freight	0	0	0.00	0	0	0.00
International Deplaned Belly Freight	0	0	0.00	0	0	0.00
South Terminal-Intl Enplaned Belly Frt	0	0	0.00	0	0	0.00
South Terminal-Intl Deplaned Belly Frt	0	0	0.00	0	0	0.00
Belly Freight Totals	1,132,554	1,705,942	-33.61	6,357,314	8,990,281	-29.29
Cargo Totals (Mail, Cargo, Belly Freight)	13,069,061	17,380,912	-24.81	64,303,615	89,140,387	-27.86

RECORD SET = MARCH 2001

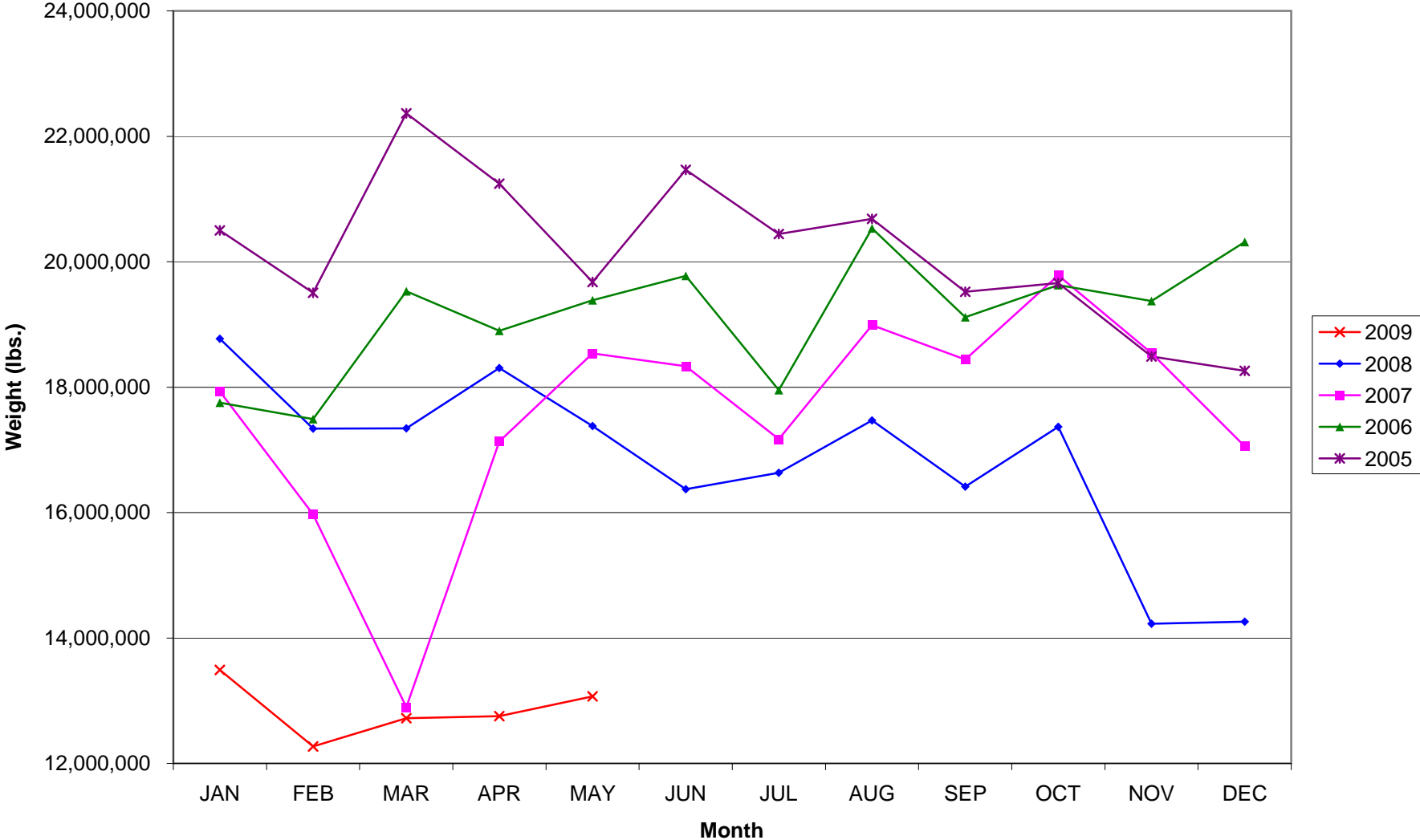
AUS – Airline Codes
May 2009

<u>Code</u>	<u>Carrier</u>
VB	Aeroenlaces Nacionales S.A. de C.V./vivaAerobus
G4	Allegiant Air
AA	American Airlines, Inc.
XP	Casino Express Airways
RP	Chautauqua Airlines, Inc.
CO	Continental Airlines
DL	Delta Airlines
F9	Frontier Airlines DIP
QK	Jazz Air LP
B6	JetBlue Airways Corp.
YV	Mesa Airlines, Inc.
S5	Shuttle America Corp. (Delta Connection)
OO	SkyWest Airlines, Inc.
WN	Southwest Airlines
UA	United Airlines, Inc. (GoJet Airlines dba United Express)
V2	Vision Airlines

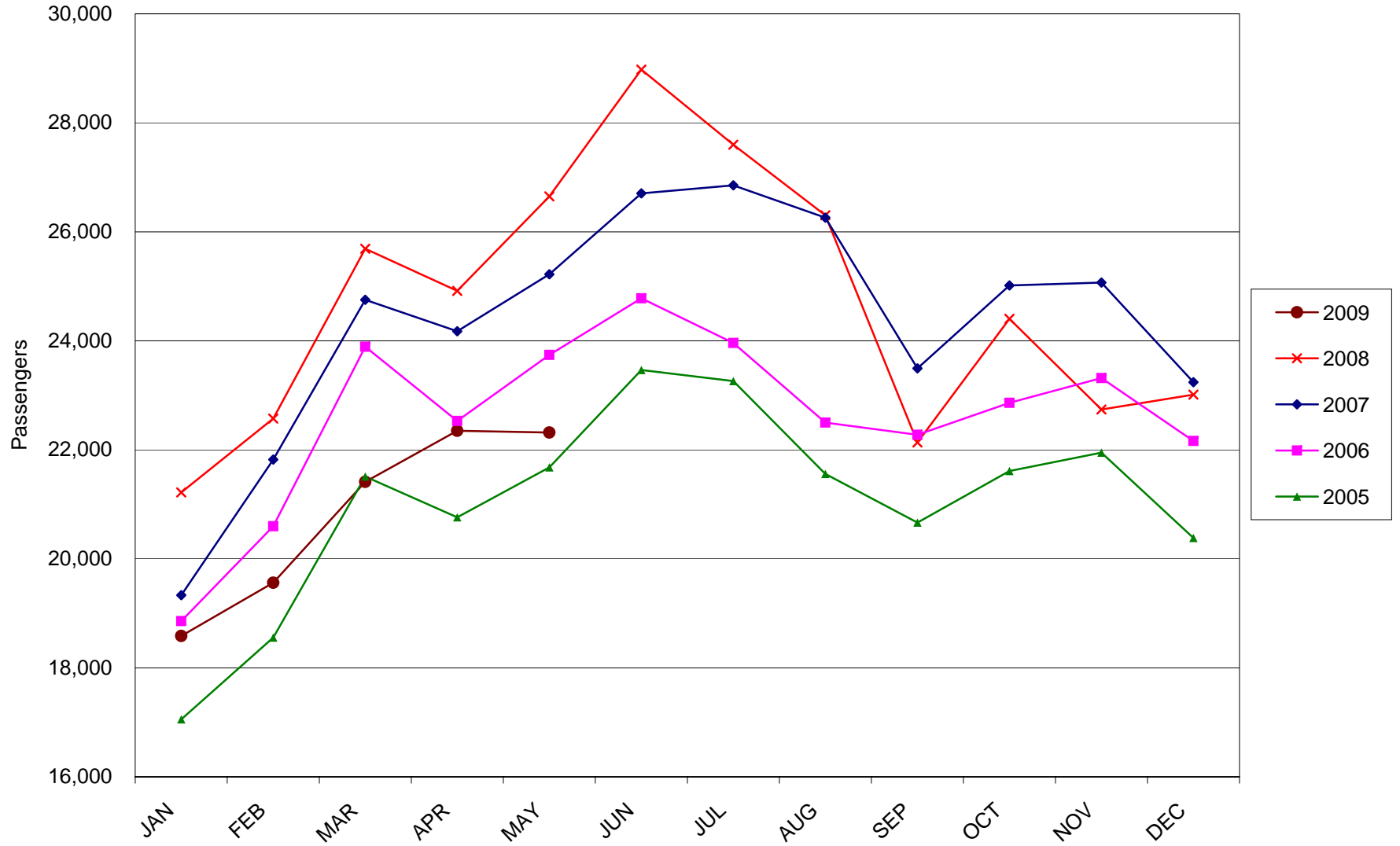
AUSTIN PASSENGER TRAFFIC



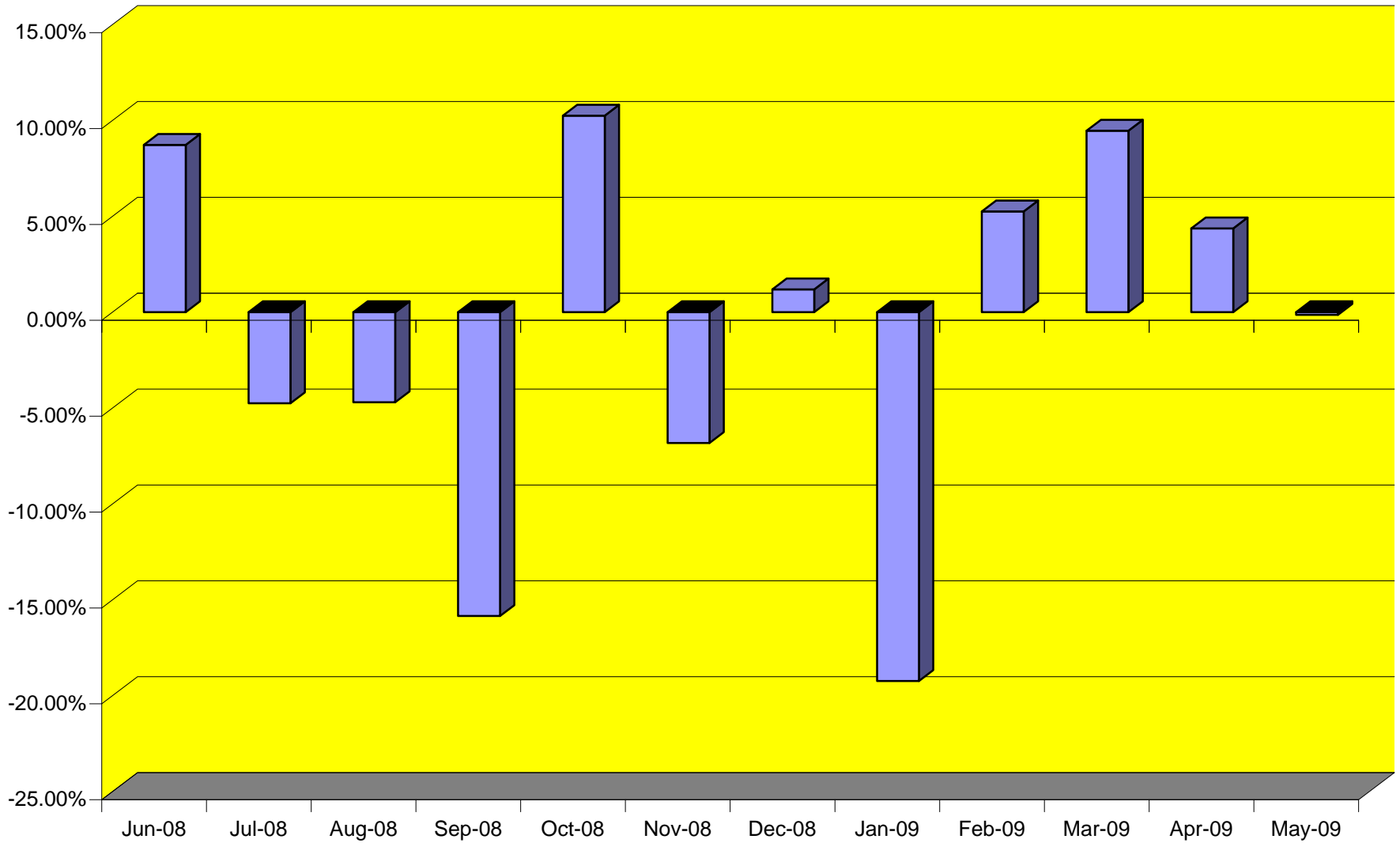
TOTAL CARGO POUNDAGE - AUSTIN, TEXAS



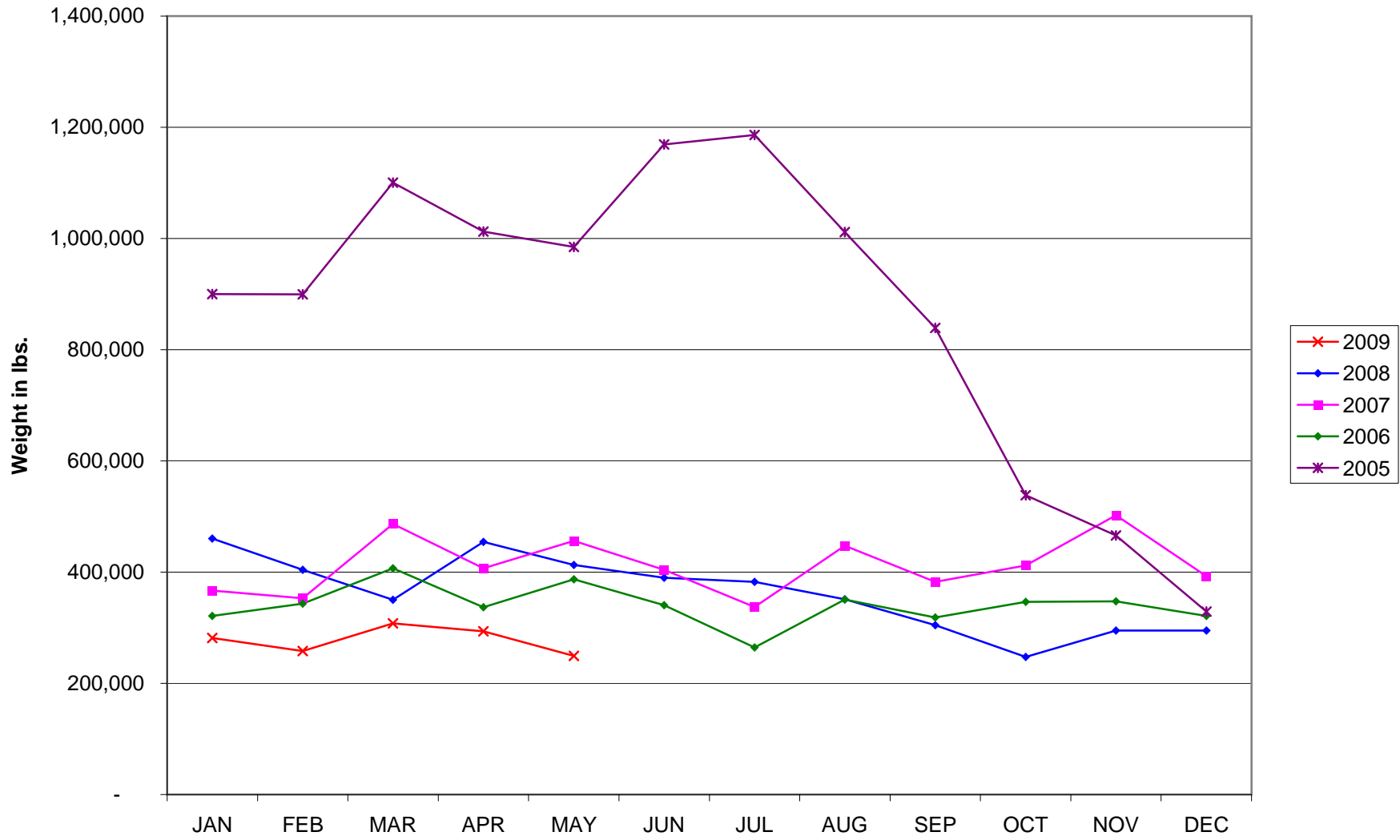
Average Daily Passengers



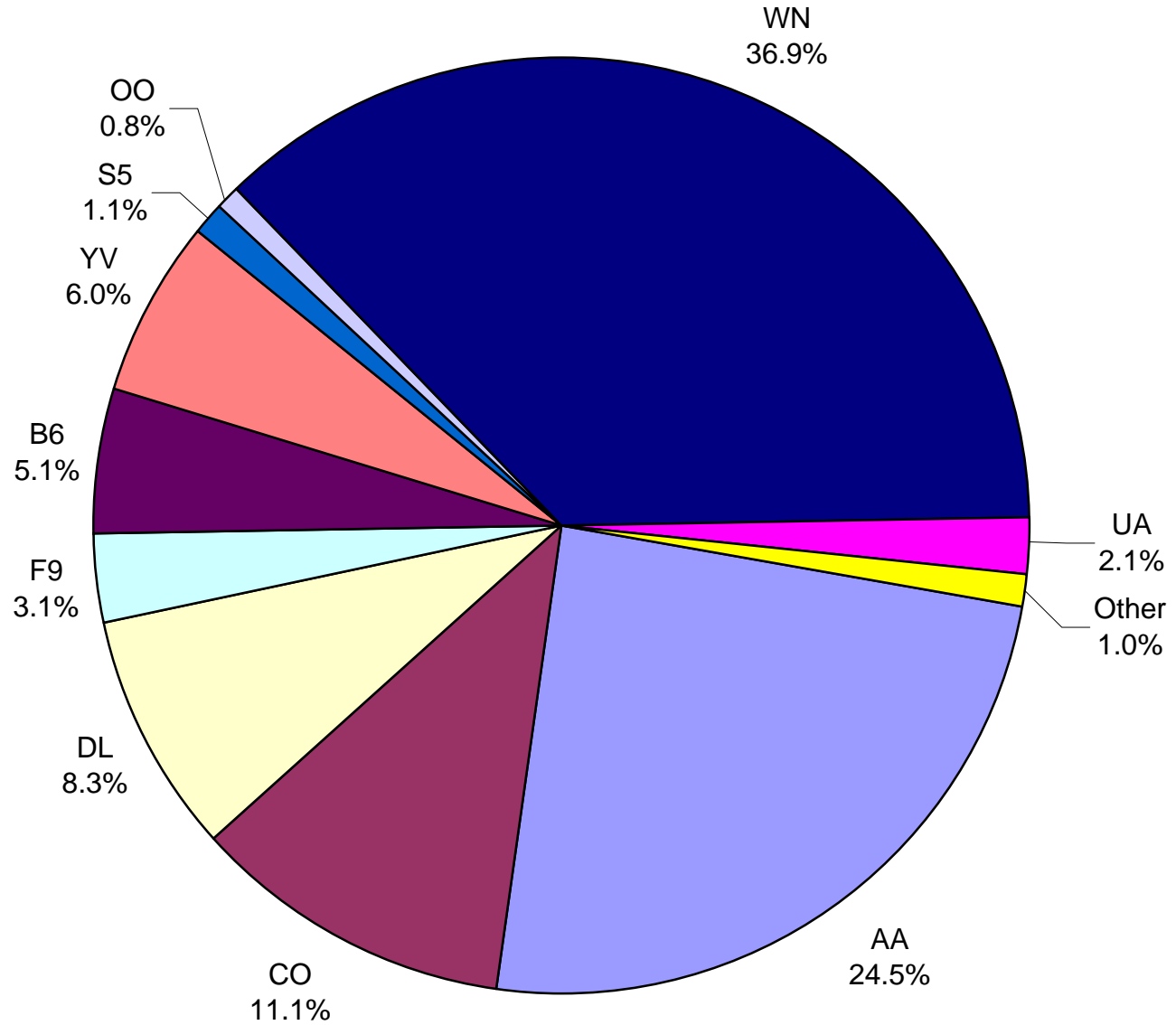
Monthly % Change in Average Daily Passengers



History of International Air Cargo



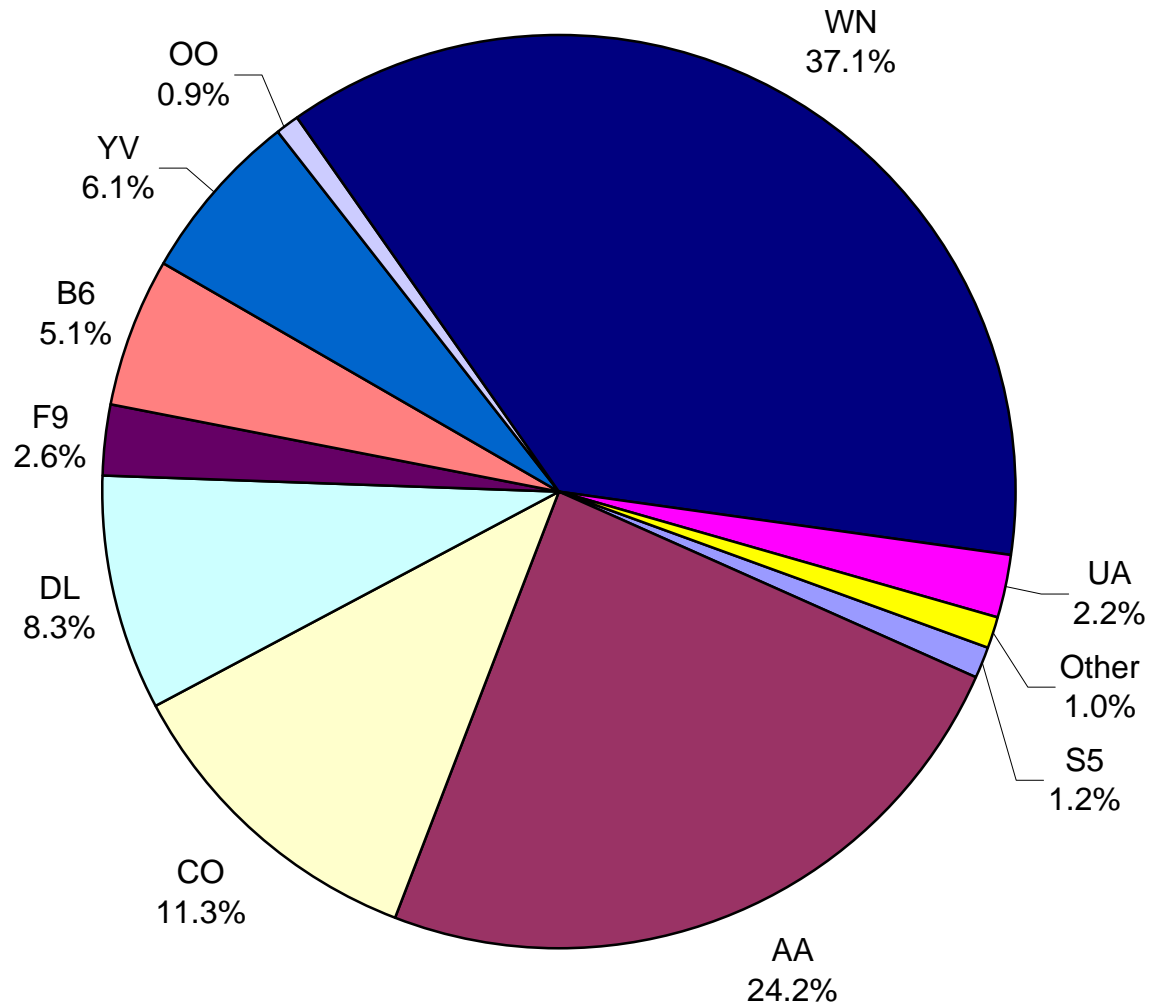
**Total Passengers
May 2009**



Other = Allegiant Air, Casino Express Airways, Chautauqua Airlines, Jazz Air L.P., Vision Airlines and vivaAerobus.

Note: United Airlines percentage includes sub-contractors.

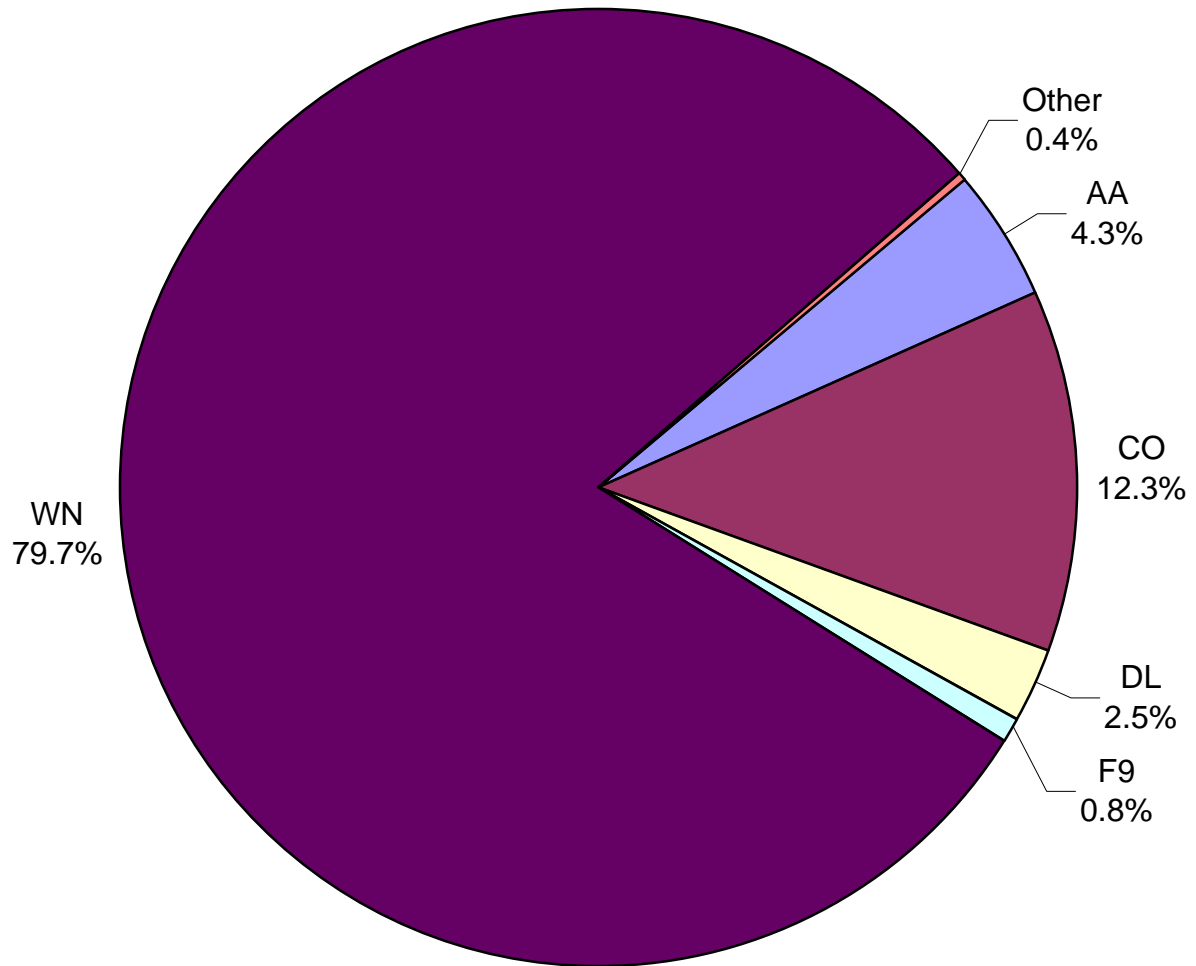
**All Passenger Carriers
Enplaned Revenue Passengers
May 2009**



Other = Allegiant Air, Casino Express Airways, Chautauqua Airlines, Jazz Air L.P., Vision Airlines and vivaAerobus.

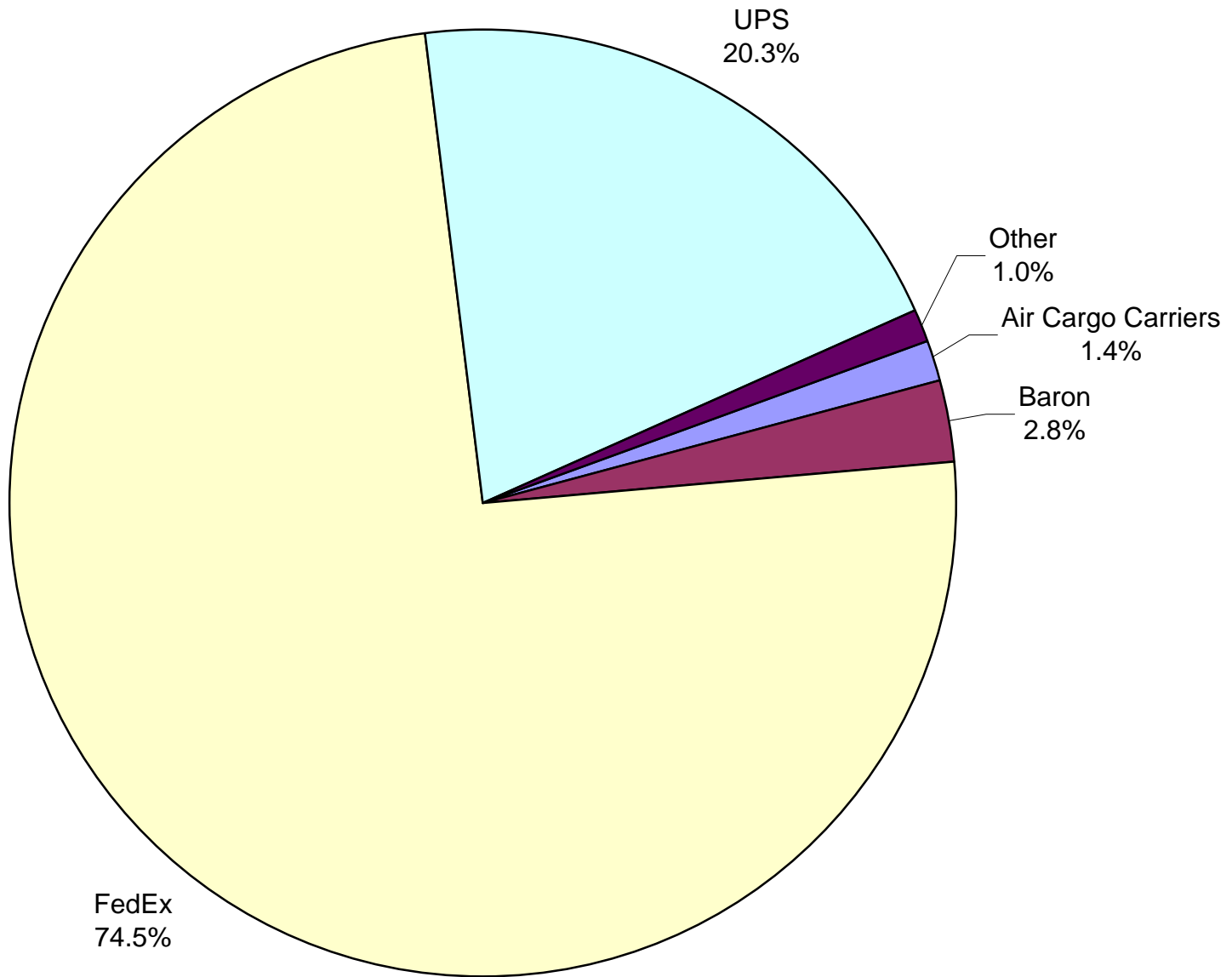
Note: United Airlines percentage includes sub-contractors.

AUS Belly Freight Market Shares
May 2009



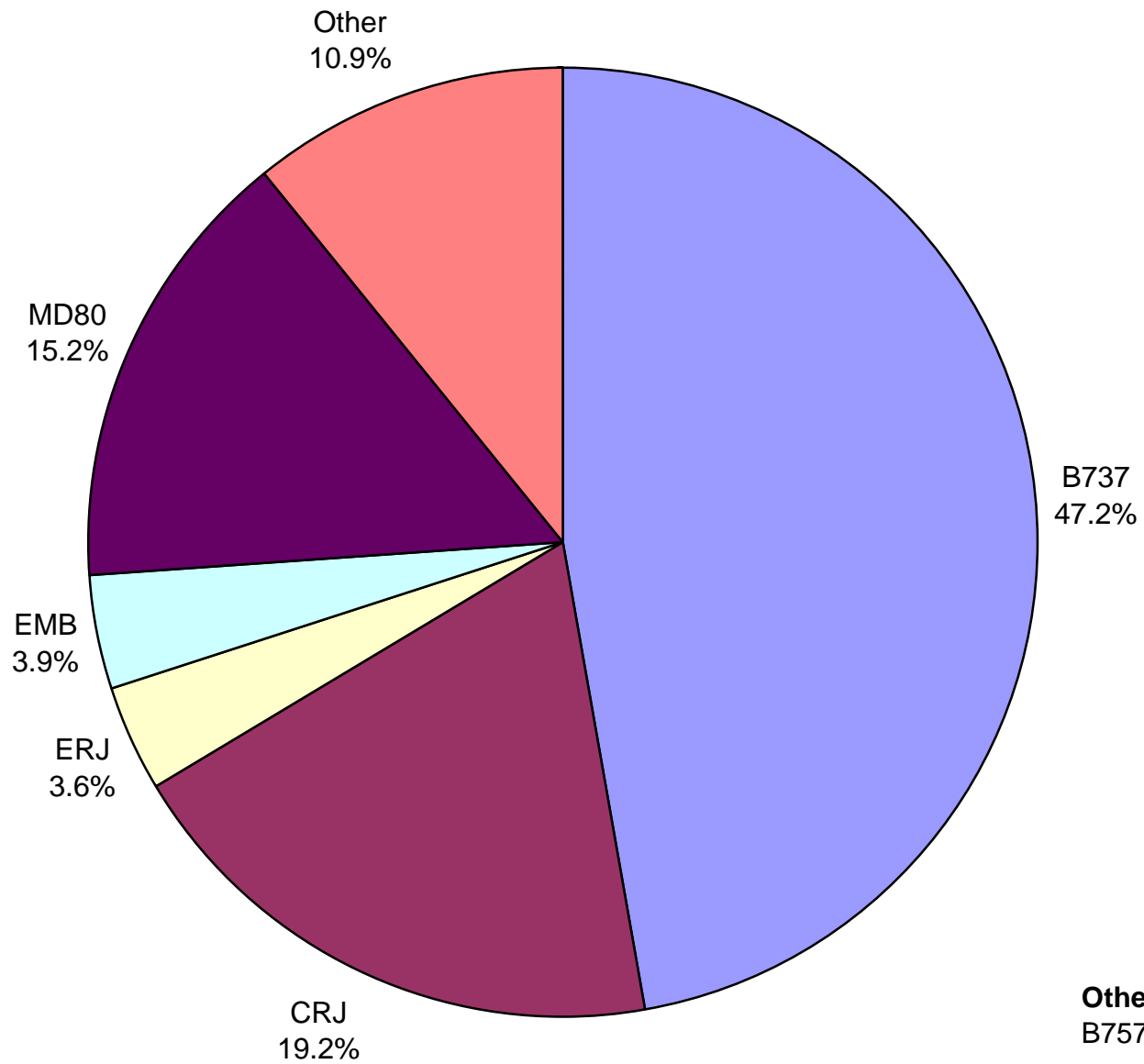
Other = Mesa Airlines and United Airlines

**Air Cargo Market Shares
May 2009**

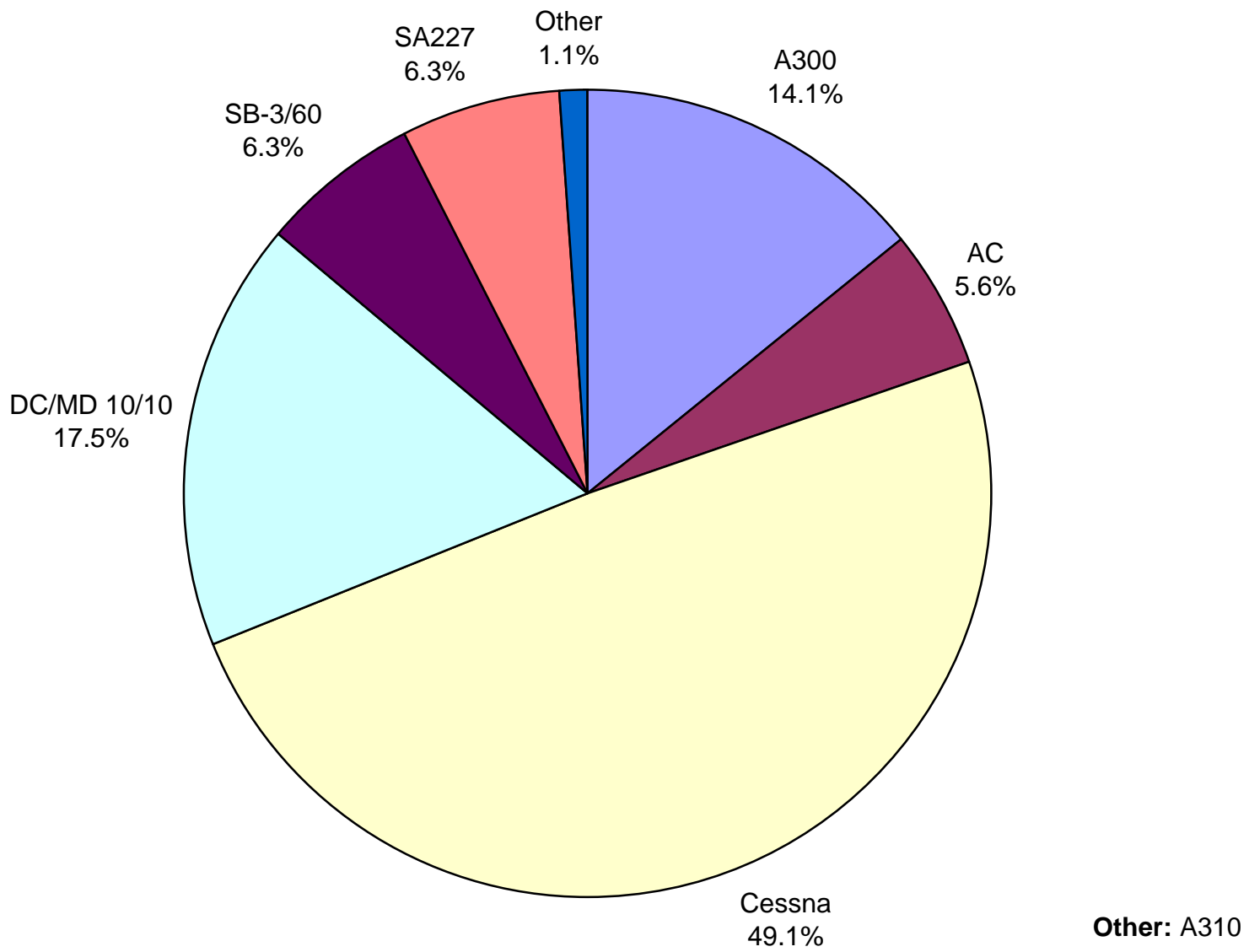


Other: Ameriflight, Lone Star Overnight L.P. and Martinaire Partners L.P.

**AUS Scheduled Passenger Aircraft Fleet Mix
May 2009**



AUS Scheduled Cargo Aircraft Fleet Mix
May 2009



Austin-Bergstrom International Airport

PAX Detail Report - May, 2009

Company	05/2009	05/2008	Period		YTD 2009	YTD 2008	YTD		2009 Share	2008 Share	Share Diff
			Difference	Change			Difference	Change			
Aero Mexico Airlines/Aerovias de Mexico, S.A. de C.V.	0	1,423	-1,423	-100.0	0	7,874	-7,874	-100.0	0.0	0.2	-0.2
Aeroenlaces Nacionales S.A. DE C.V./vivaAerobus	2,714	11,020	-8,306	-75.4	16,781	11,020	5,761	52.3	0.5	0.3	0.2
Allegiant Air	212	257	-45	-17.5	850	1,402	-552	-39.4	0.0	0.0	0.0
American Airlines, Inc	169,767	203,081	-33,314	-16.4	715,035	940,464	-225,429	-24.0	22.7	25.5	-2.8
Atlantic Southeast Airlines, Inc.	0	508	-508	-100.0	10,833	33,862	-23,029	-68.0	0.3	0.9	-0.6
Casino Express Airways	290	0	290	0.0	1,171	1,048	123	11.7	0.0	0.0	0.0
Chautauqua Airlines Inc.	2,309	2,305	4	0.2	2,309	9,018	-6,709	-74.4	0.1	0.2	-0.2
Continental Airlines	76,596	85,405	-8,809	-10.3	369,492	414,187	-44,695	-10.8	11.7	11.2	0.5
Delta Airlines	57,089	42,547	14,542	34.2	148,159	172,721	-24,562	-14.2	4.7	4.7	0.0
Delta Airlines/Pinnacle	0	0	0	0.0	10,699	0	10,699	0.0	0.3	0.0	0.3
Express Jet Airlines, Inc.	0	14,481	-14,481	-100.0	0	82,319	-82,319	-100.0	0.0	2.2	-2.2
Frontier Airlines DIP	21,592	18,568	3,024	16.3	84,338	29,607	54,731	184.9	2.7	0.8	1.9
Frontier Airlines, Inc. - Pre Bankruptcy	0	0	0	0.0	0	60,210	-60,210	-100.0	0.0	1.6	-1.6
GoJet Airlines d/b/a United Express	3,488	0	3,488	0.0	20,649	0	20,649	0.0	0.7	0.0	0.7
JAZZ Air LP	1,470	2,686	-1,216	-45.3	7,883	2,686	5,197	193.5	0.3	0.1	0.2
JetBlue Airways Corporation	34,922	37,913	-2,991	-7.9	169,495	113,442	56,053	49.4	5.4	3.1	2.3
Mesa Airlines Inc.	41,363	28,511	12,852	45.1	201,365	95,509	105,856	110.8	6.4	2.6	3.8
Miami Air International Inc.	0	0	0	0.0	0	342	-342	-100.0	0.0	0.0	0.0
Midwest Airlines, Inc.	0	4,283	-4,283	-100.0	0	18,959	-18,959	-100.0	0.0	0.5	-0.5
MN Airlines, LLC d/b/a Sun Country	0	0	0	0.0	0	102	-102	-100.0	0.0	0.0	0.0
Northwest Airlines	0	15,608	-15,608	-100.0	28,533	63,193	-34,660	-54.8	0.9	1.7	-0.8
Pace Airlines	0	40	-40	-100.0	122	40	82	205.0	0.0	0.0	0.0
Pinnacle Airlines, Inc. dba Northwest Airlink	0	10,459	-10,459	-100.0	9,070	39,875	-30,805	-77.3	0.3	1.1	-0.8
Shuttle America Corporation	7,911	15,704	-7,793	-49.6	30,962	58,643	-27,681	-47.2	1.0	1.6	-0.6
SkyWest Airlines, Inc	5,779	14,872	-9,093	-61.1	49,375	71,602	-22,227	-31.0	1.6	1.9	-0.4
Southwest Airlines	255,159	286,125	-30,966	-10.8	1,212,532	1,296,350	-83,818	-6.5	38.5	35.2	3.3
Trans States Airlines, Inc	0	2,433	-2,433	-100.0	6,844	4,297	2,547	59.3	0.2	0.1	0.1
United Airlines, Inc.	11,086	15,420	-4,334	-28.1	51,922	81,382	-29,460	-36.2	1.6	2.2	-0.6
US Airways Group, Inc.	0	12,543	-12,543	-100.0	1,279	72,352	-71,073	-98.2	0.0	2.0	-1.9
USA Jet Airlines, Inc.	0	0	0	0.0	0	16	-16	-100.0	0.0	0.0	0.0
Vision Airlines, Inc.	136	0	136	0.0	408	0	408	0.0	0.0	0.0	0.0
Report Totals	691,883	826,192	-134,309	-16.3%	3,150,106	3,682,522	-532,416	-14.5%			

Statistics Included in Report:

Domestic Passengers:

Enplaned Revenue, Deplaned Revenue, Through Revenue, Enplaned Non-Revenue, Deplaned Non-Revenue, Through Non-Revenue

International Passenger:

Enplaned Revenue, Deplaned Revenue, Through Revenue, Enplaned Non-Revenue, Deplaned Non-Revenue, Through Non-Revenue, South Terminal-Int'l Enplaned Revenue, South Terminal-Int'l Deplaned Revenue, South Terminal-Int'l Through Revenue, South Terminal-Int'l Enplaned Non-Revenue, South Terminal-Int'l Deplaned Non-Revenue, South Terminal-Int'l Through Non-Revenue

Austin-Bergstrom International Airport

Summary Landing Report

Landing Type: Total

Month	2009		2008		2007		% Change 2009 - 2008		% Change 2008 - 2007	
	Count	Weight	Count	Weight	Count	Weight	Count	Weight	Count	Weight
January	4,170	470,373,445	4,995	508,563,011	4,269	461,169,144	-16.52%	-7.51%	17.01%	10.28%
February	3,797	422,422,704	4,707	477,510,902	4,084	433,092,352	-19.33%	-11.54%	15.25%	10.26%
March	4,152	463,191,645	5,057	511,086,453	4,693	498,304,509	-17.90%	-9.37%	7.76%	2.57%
April	4,079	449,966,657	4,853	498,467,860	4,659	485,924,900	-15.95%	-9.73%	4.16%	2.58%
May	4,151	460,895,644	5,213	542,161,220	5,116	524,923,078	-20.37%	-14.99%	1.90%	3.28%
June			5,252	551,158,994	5,006	521,808,372			4.91%	5.62%
July			5,097	553,506,814	5,245	543,679,941			-2.82%	1.81%
August			5,006	550,514,204	5,453	559,884,838			-8.20%	-1.67%
September			4,261	481,994,314	5,107	513,882,056			-16.57%	-6.21%
October			4,550	518,348,013	5,373	539,788,979			-15.32%	-3.97%
November			4,200	480,660,098	5,053	515,341,963			-16.88%	-6.73%
December			4,322	492,152,692	4,997	511,272,858			-13.51%	-3.74%
Totals for Selected Period	20,349	2,266,850,095	24,825	2,537,789,446	22,821	2,403,413,983	-18.03%	-10.68%	8.78%	5.59%
Yearly Totals	20,349	2,266,850,095	57,513	6,166,124,575	59,055	6,109,072,990			-2.61%	0.93%