

# Austin-Bergstrom International Airport

## Aviation Activity Report

	12/2008	12/2007	Percent Change	01/2008 - 12/2008	01/2007 - 12/2007	Percent Change
<b><u>Passenger Activity</u></b>						
Domestic Enplaned Revenue	341,733	349,964	-2.35	4,262,794	4,203,158	1.42
Domestic Deplaned Revenue	332,647	334,486	-0.55	4,256,825	4,204,570	1.24
Domestic Through Revenue	13,447	16,025	-16.09	189,673	214,238	-11.47
International Enplaned Revenue	923	1,058	-12.76	12,414	13,394	-7.32
International Deplaned Revenue	970	1,176	-17.52	13,080	13,708	-4.58
International Through Revenue	0	0	0.00	0	0	0.00
Domestic Enplaned Non-Revenue	9,341	6,113	52.81	121,436	119,220	1.86
Domestic Deplaned Non-Revenue	8,757	9,206	-4.88	116,636	114,632	1.75
Domestic Through Non-Revenue	0	2,462	-100.00	0	2,471	-100.00
International Enplaned Non-Revenue	18	0	0.00	223	0	0.00
International Deplaned Non-Revenue	30	0	0.00	263	0	0.00
International Through Non-Revenue	0	0	0.00	0	0	0.00
South Terminal-Intl Enplaned Revenue	3,014	0	0.00	33,090	0	0.00
South Terminal-Intl Deplaned Revenue	2,478	0	0.00	32,641	0	0.00
South Terminal-Intl Through Revenue	0	0	0.00	0	0	0.00
South Terminal-Intl Enplaned Non-Revenue	0	0	0.00	0	0	0.00
South Terminal-Intl Deplaned Non-Revenue	0	0	0.00	0	0	0.00
South Terminal-Intl Through Non-Revenue	0	0	0.00	0	0	0.00
<b>Passenger Totals</b>	<b>713,358</b>	<b>720,490</b>	<b>-0.99</b>	<b>9,039,075</b>	<b>8,885,391</b>	<b>1.73</b>

CURRENT PASSENGER RECORD = 869,308

RECORD SET = JUNE 2008

### **Aircraft Operations**

Air Carrier	8,127	8,608	-5.59	105,400	103,561	1.78
Commuter & Air Taxi	1,467	2,726	-46.18	26,856	30,409	-11.68
Military	308	340	-9.41	4,873	5,603	-13.03
General Aviation						
Itinerant	3,920	5,581	-29.76	68,892	70,876	-2.80
Local	170	260	-34.62	2,542	3,991	-36.31
Total G.A.	4,090	5,841	-29.98	71,434	74,867	-4.59
<b>Total Operations</b>	<b>13,992</b>	<b>17,515</b>	<b>-20.11</b>	<b>208,563</b>	<b>214,440</b>	<b>-2.74</b>

# Austin-Bergstrom International Airport

## Aviation Activity Report

	12/2008	12/2007	Percent Change	01/2008 - 12/2008	01/2007 - 12/2007	Percent Change
<b><u>Cargo Activity</u></b>						
Mail						
Domestic Enplaned Mail	143,085	125,569	13.95	2,126,662	1,610,172	32.08
Domestic Deplaned Mail	244,460	121,254	101.61	4,476,100	2,827,960	58.28
International Enplaned Mail	0	0	0.00	0	15	-100.00
International Deplaned Mail	0	0	0.00	0	15	-100.00
South Terminal-Intl Enplaned Mail	0	0	0.00	0	0	0.00
South Terminal-Intl Deplaned Mail	0	0	0.00	0	0	0.00
Mail Totals	387,545	246,823	57.01	6,602,762	4,438,162	48.77
Cargo						
Domestic Enplaned Cargo	6,315,785	7,983,698	-20.89	93,742,673	95,175,179	-1.51
Domestic Deplaned Cargo	5,785,096	6,541,822	-11.57	76,475,485	83,013,542	-7.88
International Enplaned Cargo	294,750	392,617	-24.93	4,347,197	4,947,377	-12.13
International Deplaned Cargo	0	0	0.00	0	0	0.00
South Terminal-Intl Enplaned Cargo	0	0	0.00	0	0	0.00
South Terminal-Intl Deplaned Cargo	0	0	0.00	0	0	0.00
Cargo Totals	12,395,631	14,918,137	-16.91	174,565,355	183,136,098	-4.68
Belly Freight						
Domestic Enplaned Belly Freight	862,725	1,159,927	-25.62	11,304,305	14,422,615	-21.62
Domestic Deplaned Belly Freight	614,513	729,817	-15.80	9,409,007	8,778,888	7.18
International Enplaned Belly Freight	0	0	0.00	0	0	0.00
International Deplaned Belly Freight	0	0	0.00	0	0	0.00
South Terminal-Intl Enplaned Belly Frt	0	0	0.00	0	0	0.00
South Terminal-Intl Deplaned Belly Frt	0	0	0.00	0	0	0.00
Belly Freight Totals	1,477,238	1,889,744	-21.83	20,713,312	23,201,503	-10.72
<b>Cargo Totals (Mail, Cargo, Belly Freight)</b>	<b>14,260,414</b>	<b>17,054,704</b>	<b>-16.38</b>	<b>201,881,429</b>	<b>210,775,763</b>	<b>-4.22</b>

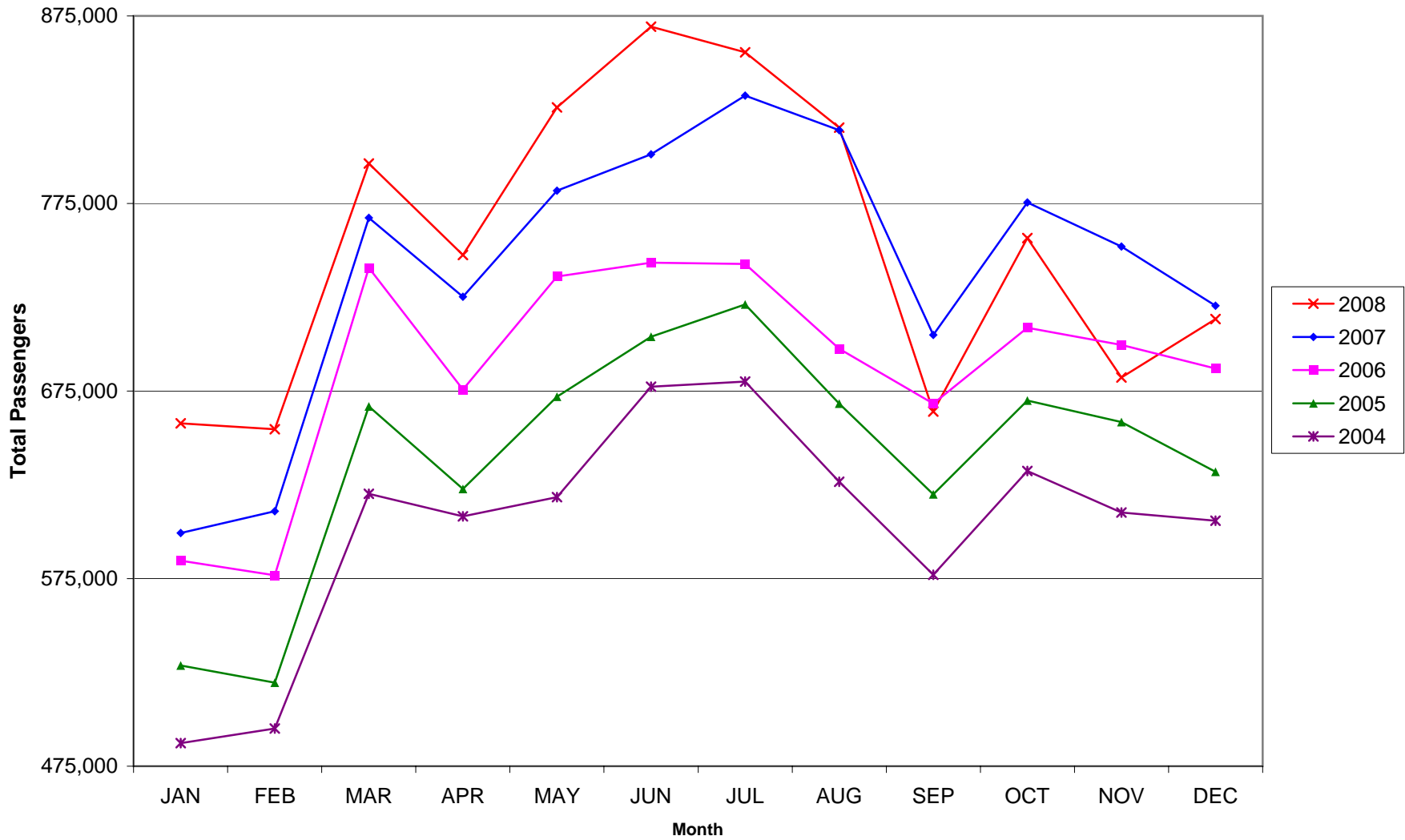
CURRENT CARGO RECORD = 40,215,518

RECORD SET = MARCH 2001

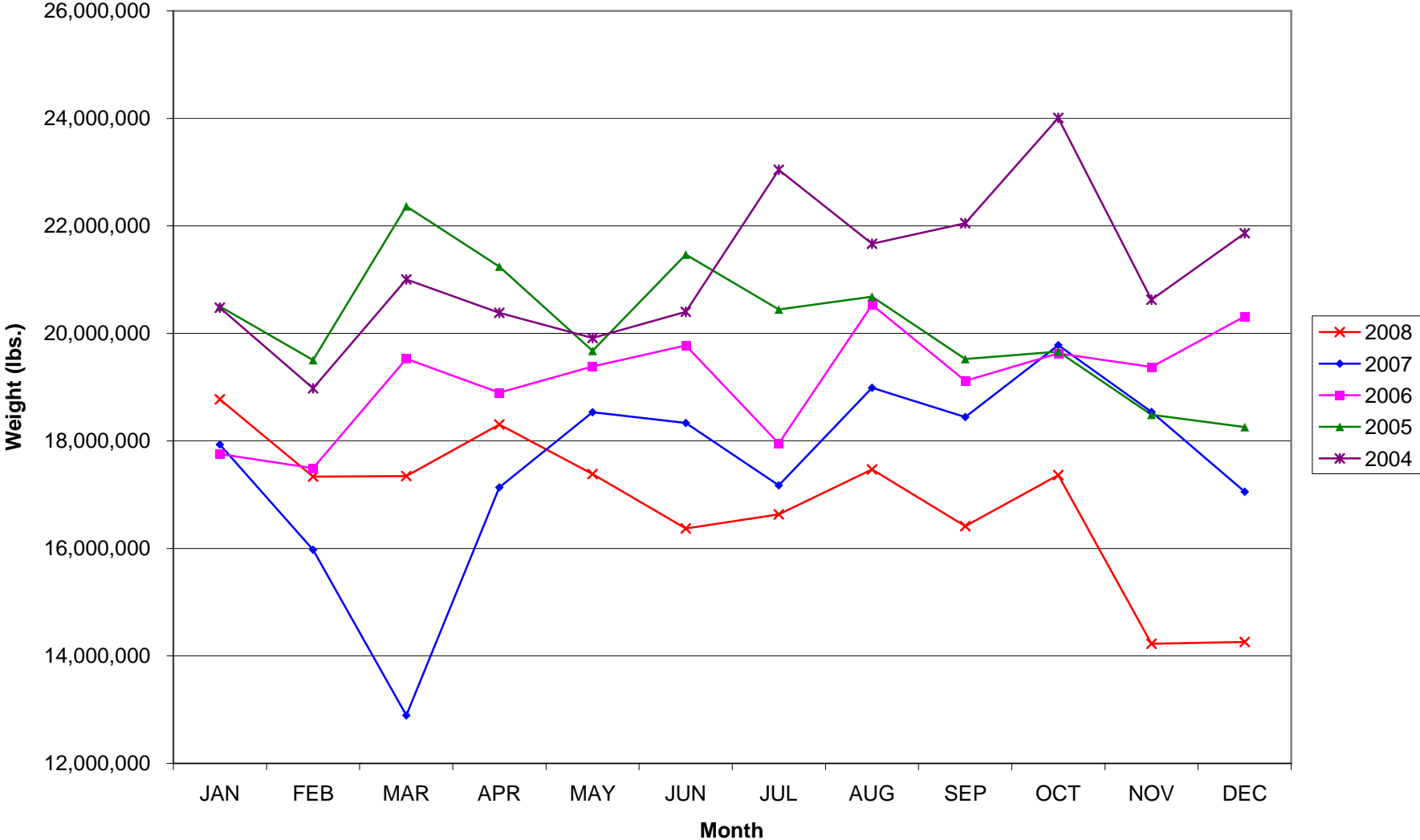
**AUS – Airline Codes**  
December 2008

<b><u>Code</u></b>	<b><u>Carrier</u></b>
VB	Aeroenlaces Nacionales S.A. de C.V./vivaAerobus
G4	Allegiant Air
AA	American Airlines, Inc.
EV	Atlantic Southeast Airlines, Inc. (Delta Connection)
CO	Continental Airlines
DL	Delta Airlines
F9	Frontier Airlines DIP
QK	Jazz Air LP
B6	JetBlue Airways Corp.
YV	Mesa Airlines, Inc.
NW	Northwest Airlines
9E	Pinnacle Airlines, Inc. (Northwest AirlinK & Delta Connection)
S5	Shuttle America Corp. (Delta Connection)
OO	SkyWest Airlines, Inc.
WN	Southwest Airlines
AX	Trans States Airlines, Inc.
UA	United Airlines, Inc. (GoJet Airlines dba United Express)
US	US Airways Group, Inc.

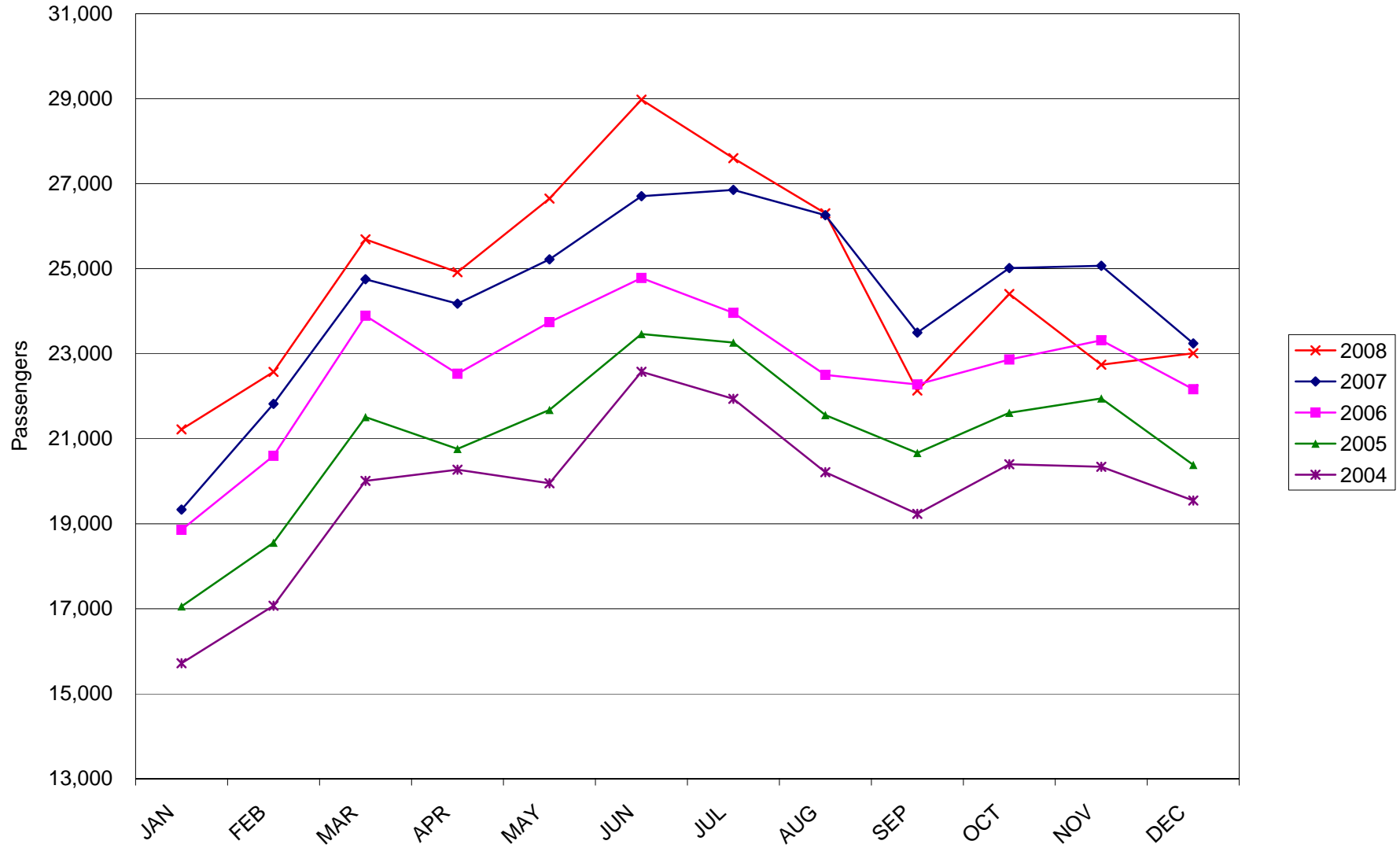
### AUSTIN PASSENGER TRAFFIC



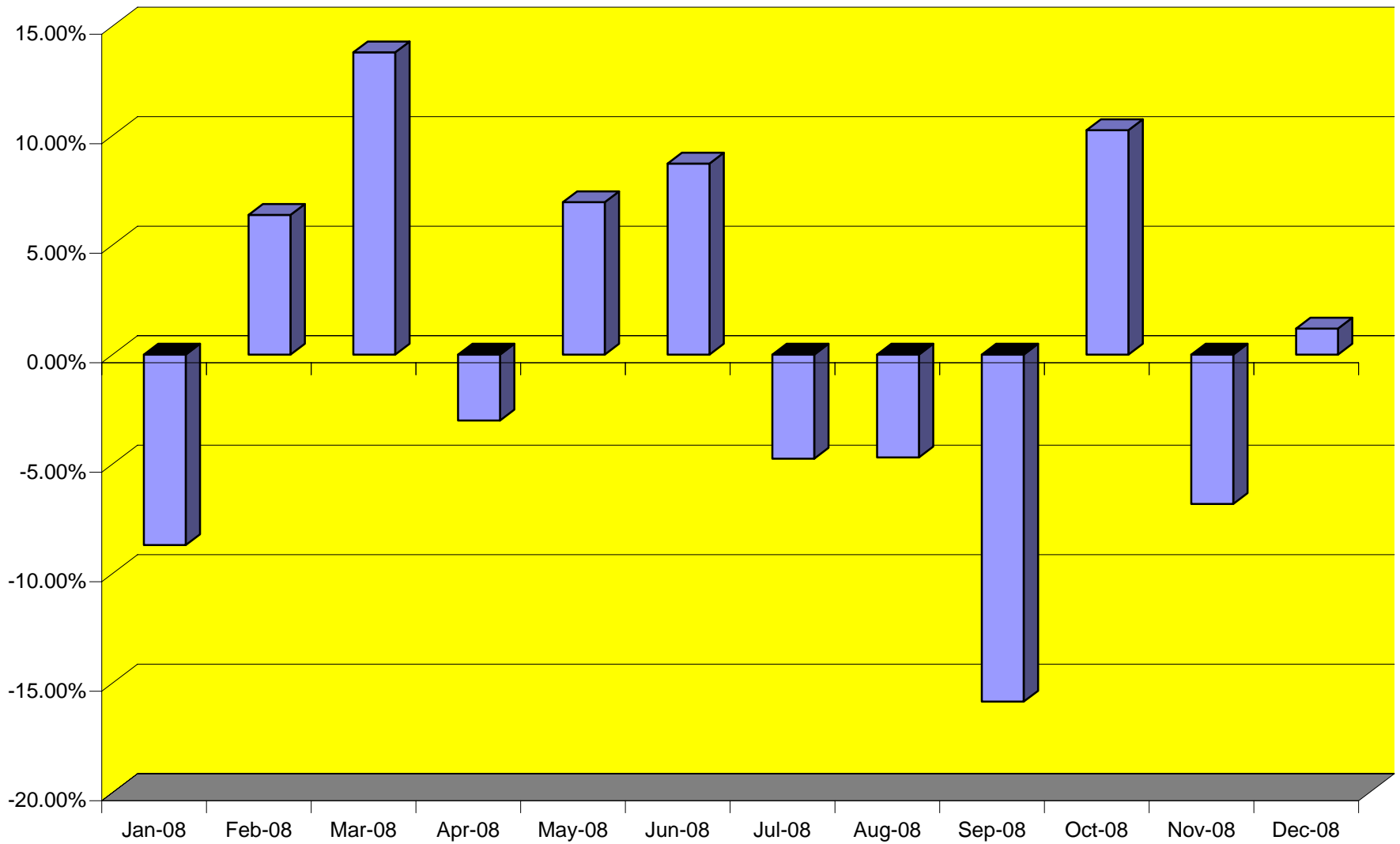
### TOTAL CARGO POUNDAGE - AUSTIN, TEXAS



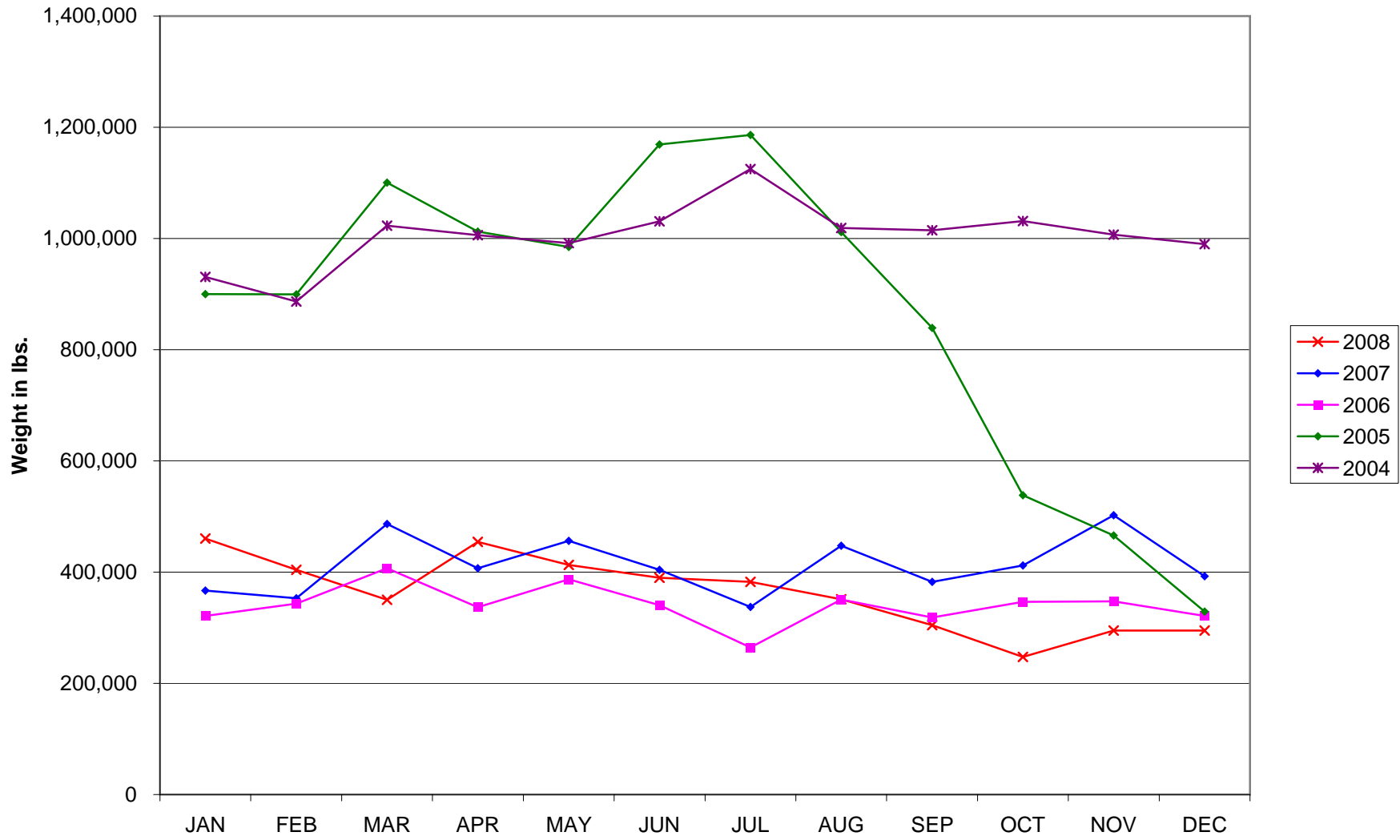
Average Daily Passengers



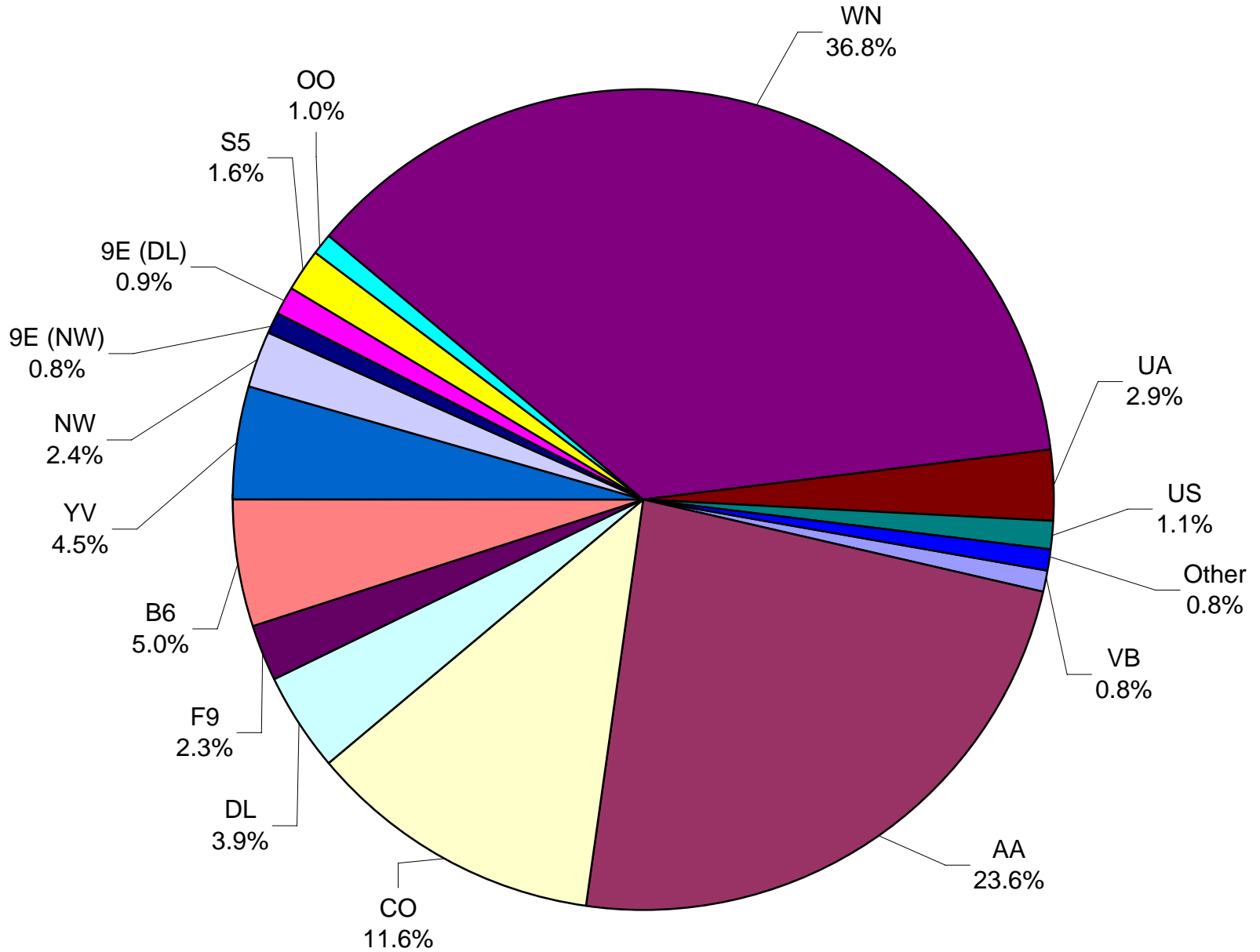
Monthly % Change in Average Daily Passengers



### History of International Air Cargo



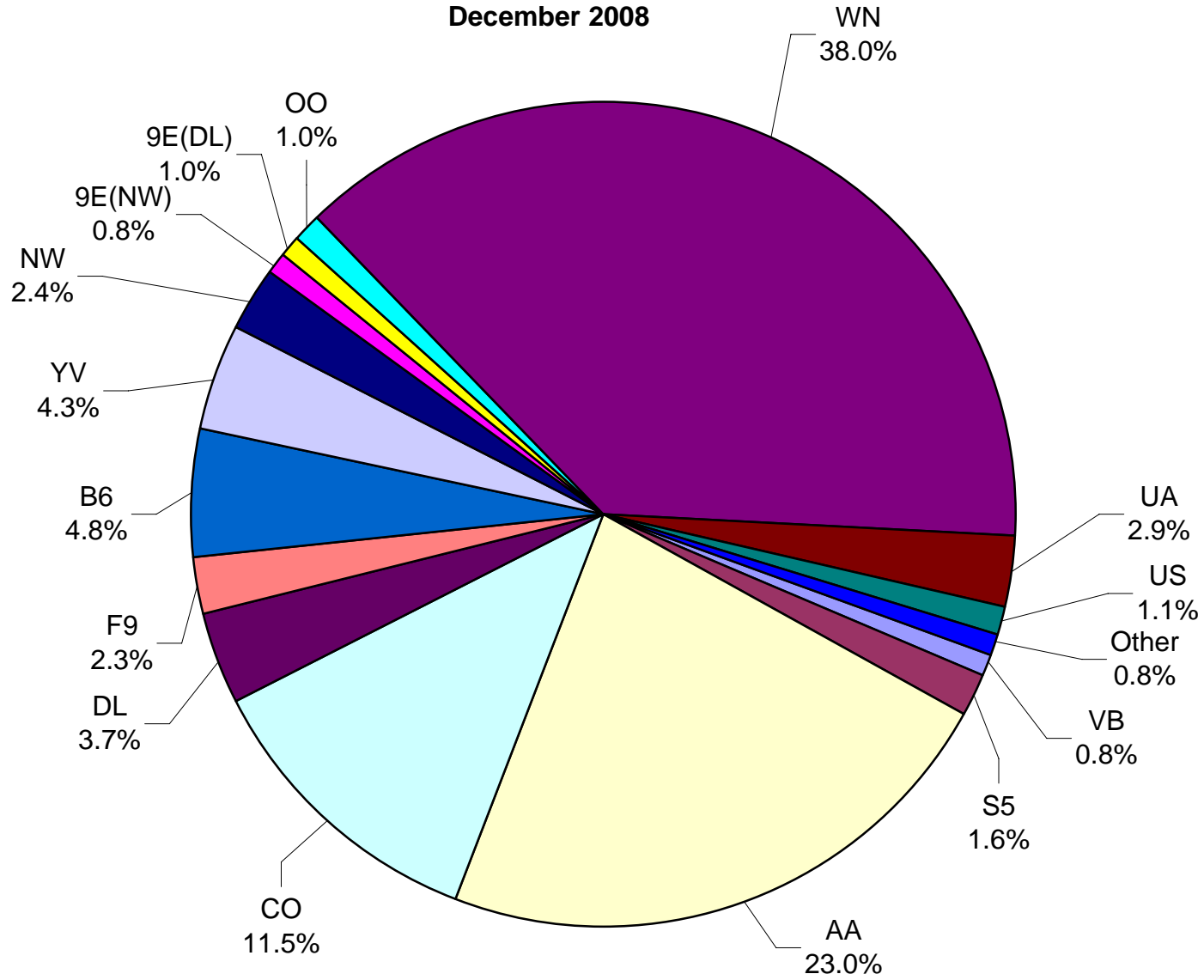
**Total Passengers  
December 2008**



**Other** = Allegiant Air, Atlantic Southeast Airlines (Delta Connection), Jazz Air L.P. and Trans States Airlines.

**Note:** United Airlines percentage includes sub-contractors.

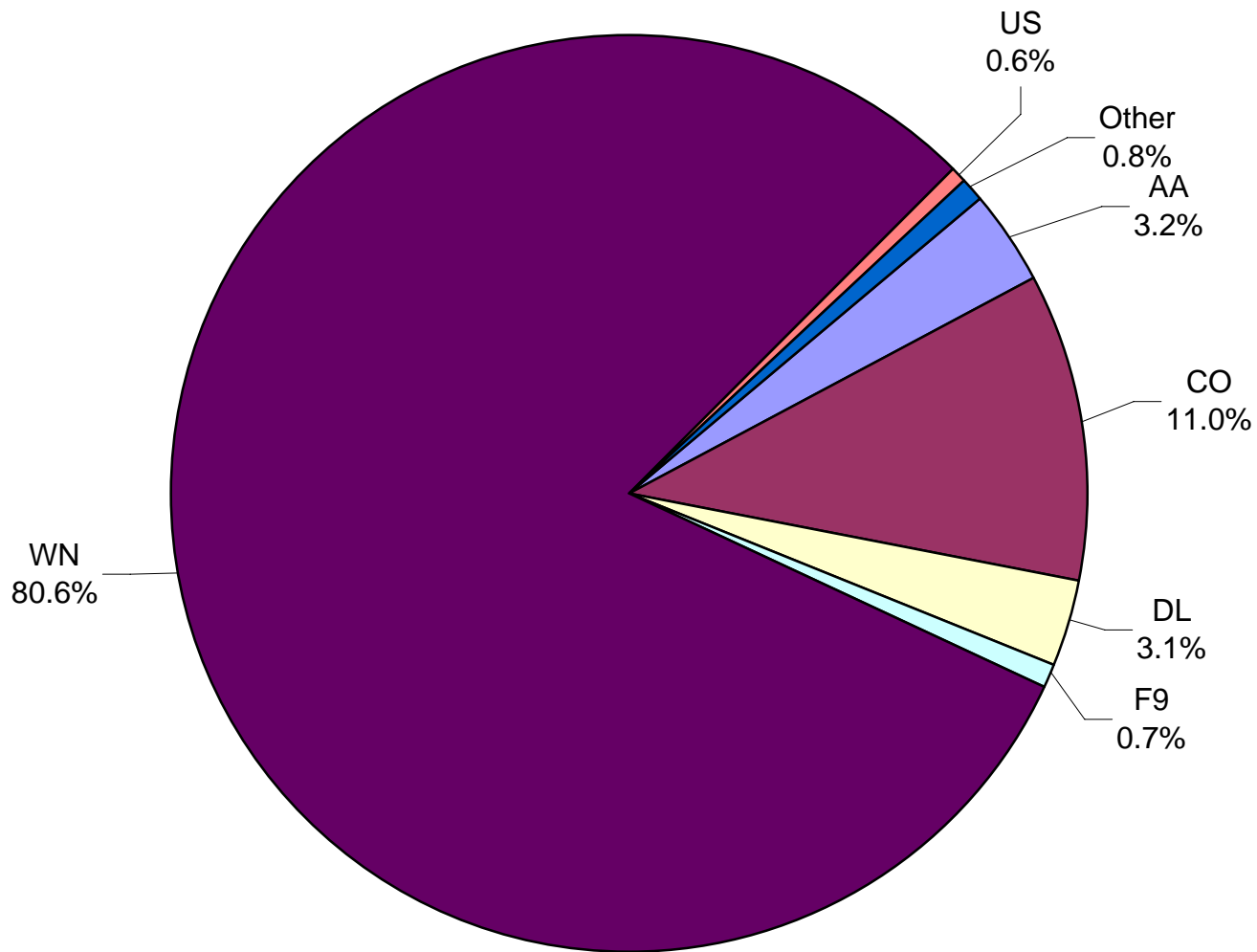
**All Passenger Carriers  
Enplaned Revenue Passengers  
December 2008**



**Other** = Allegiant Air, Atlantic Southeast Airlines, Inc. (Delta Connection), Jazz Air LP and Trans States Airlines Inc.

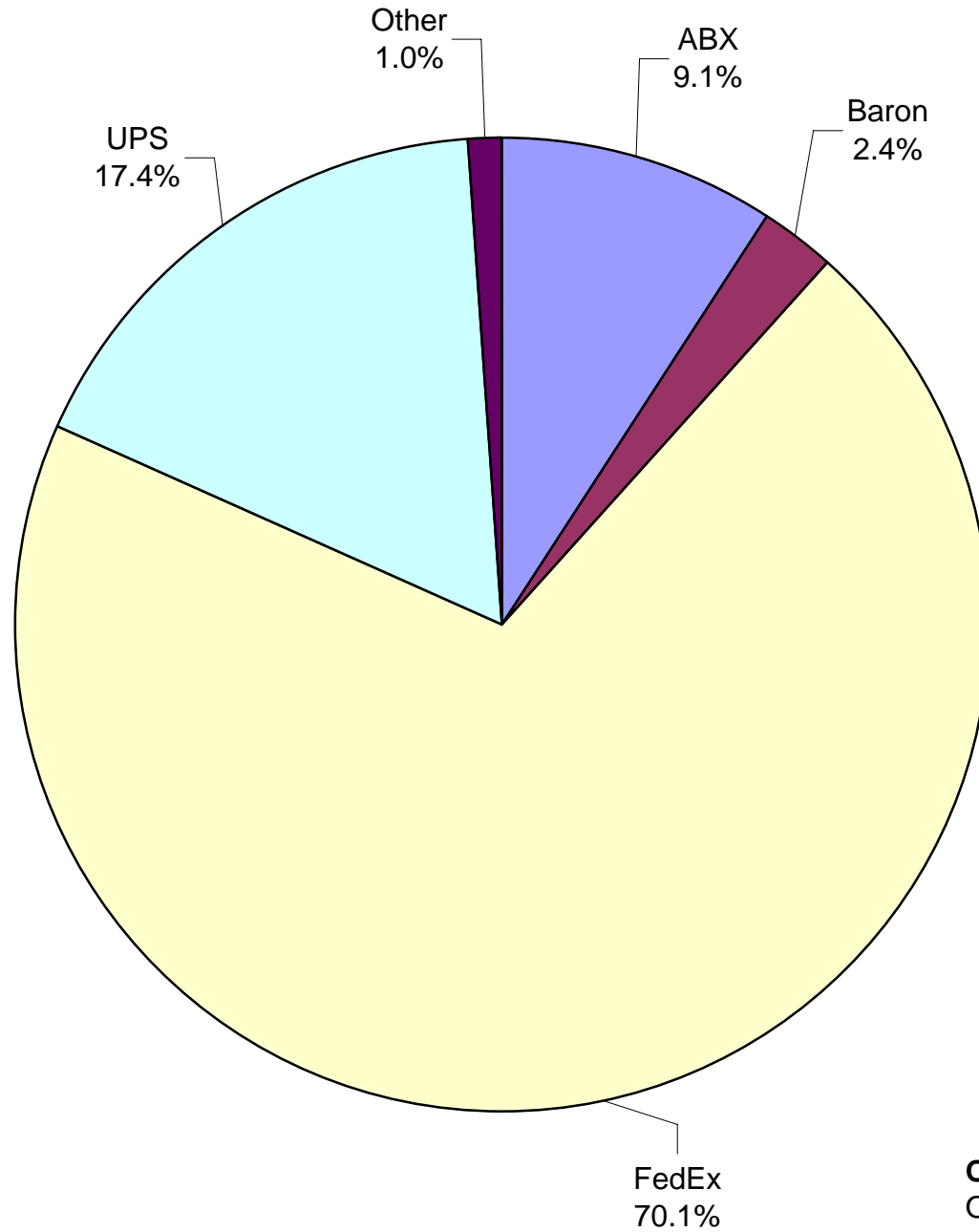
**Note:** United Airlines percentage includes sub-contractors.

**AUS Belly Freight Market Shares  
December 2008**



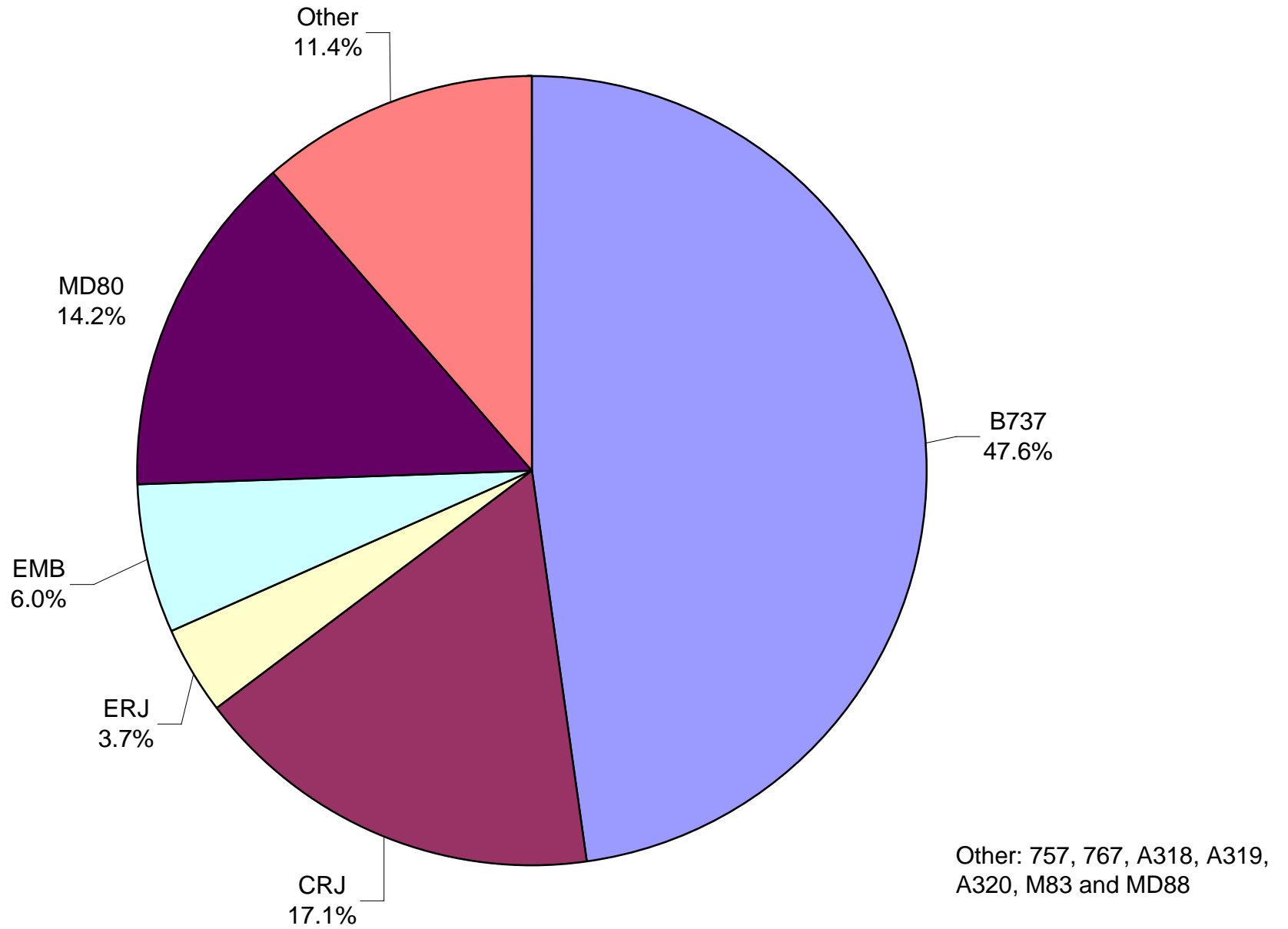
**Other** = Atlantic Southeast Airlines, Inc. (Delta Connection), Mesa Airlines, Inc., Northwest Airlines, Pinnacle Airlines, Inc. (NW & DL) and United Airlines, Inc.

**Air Cargo Market Shares  
December 2008**

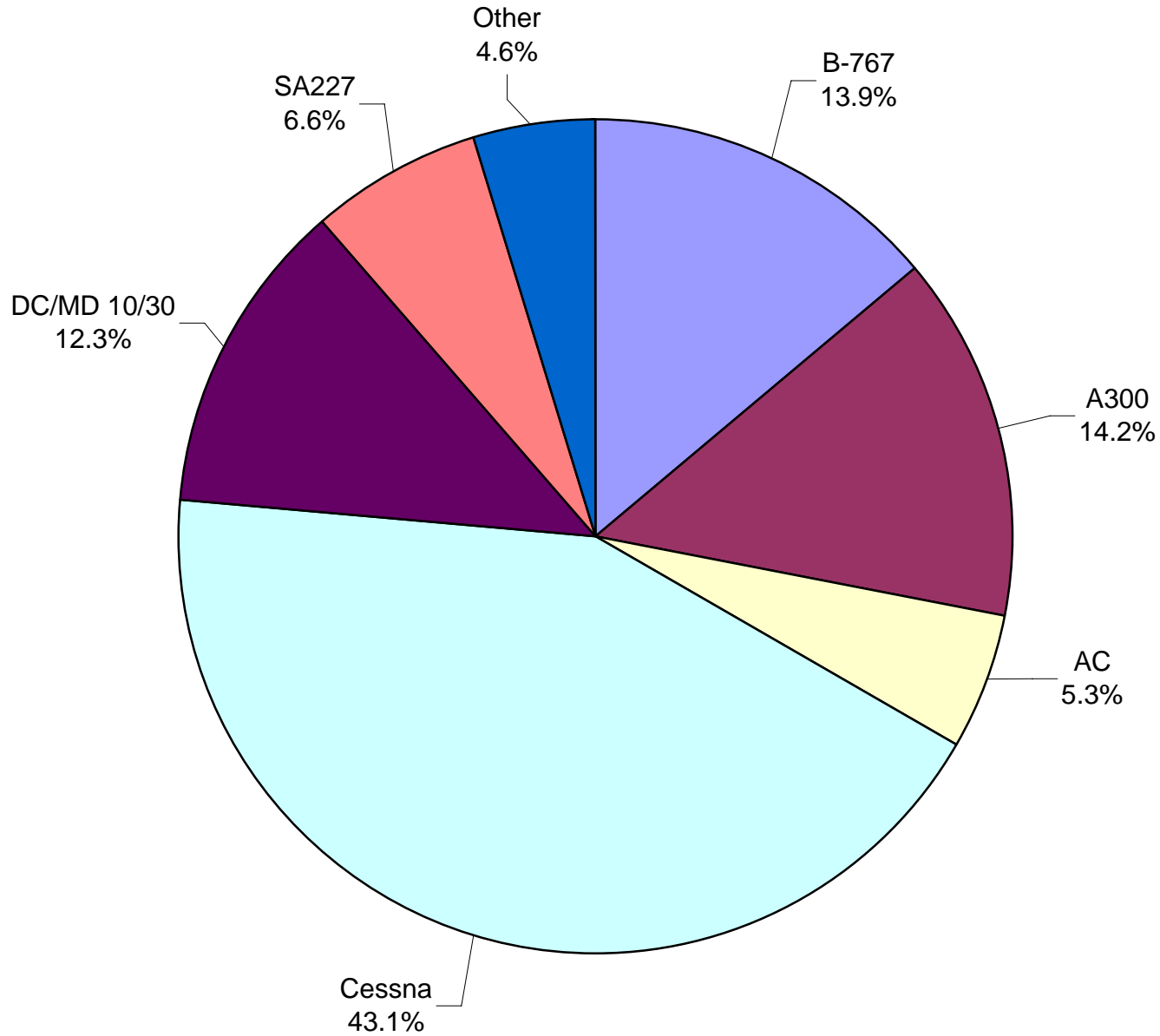


**Other:** Ameriflight, Lone Star Overnight L.P. and Martinaire Partners L.P.

**AUS Scheduled Passenger Aircraft Fleet Mix  
December 2008**



**AUS Scheduled Cargo Aircraft Fleet Mix  
December 2008**



**Other:** B757, DC/MD 10/10, ERJ and MD-11

# Austin-Bergstrom International Airport

## PAX Detail Report - December, 2008

Company	12/2008	12/2007	Period		YTD 2008	YTD 2007	YTD		2008 Share	2007 Share	Share Diff
			Difference	Change			Difference	Change			
Aero Mexico Airlines/Aerovias de Mexico, S.A. de C.V.	0	2,234	-2,234	-100.0	10,584	27,102	-16,518	-60.9	0.1	0.3	-0.2
Aeroenlaces Nacionales S.A. DE C.V./vivaAerobus	5,492	0	5,492	0.0	62,854	0	62,854	0.0	0.7	0.0	0.7
Allegiant Air	220	0	220	0.0	3,353	1,156	2,197	190.1	0.0	0.0	0.0
American Airlines, Inc	168,438	195,599	-27,161	-13.9	2,211,783	2,387,762	-175,979	-7.4	24.5	26.9	-2.4
Atlantic Southeast Airlines, Inc.	1,266	11,547	-10,281	-89.0	46,452	59,908	-13,456	-22.5	0.5	0.7	-0.2
Casino Express Airways	0	0	0	0.0	1,935	1,475	460	31.2	0.0	0.0	0.0
Chautauqua Airlines Inc.	0	0	0	0.0	16,026	68	15,958	23,467.6	0.2	0.0	0.2
Continental Airlines	82,928	87,067	-4,139	-4.8	972,839	1,044,341	-71,502	-6.8	10.8	11.8	-1.0
Delta Airlines	27,502	29,308	-1,806	-6.2	449,380	451,060	-1,680	-0.4	5.0	5.1	-0.1
Delta Airlines/Pinnacle	6,486	0	6,486	0.0	28,944	0	28,944	0.0	0.3	0.0	0.3
Express Jet Airlines, Inc.	0	18,918	-18,918	-100.0	126,849	173,977	-47,128	-27.1	1.4	2.0	-0.6
Frontier Airlines DIP	16,597	0	16,597	0.0	165,446	0	165,446	0.0	1.8	0.0	1.8
Frontier Airlines, Inc. - Pre Bankruptcy	0	17,289	-17,289	-100.0	60,210	219,484	-159,274	-72.6	0.7	2.5	-1.8
GoJet Airlines d/b/a United Express	8,482	0	8,482	0.0	26,236	0	26,236	0.0	0.3	0.0	0.3
Grand Holdings, Inc DBA Champion Air	0	0	0	0.0	0	412	-412	-100.0	0.0	0.0	0.0
JAZZ Air LP	1,941	0	1,941	0.0	18,273	0	18,273	0.0	0.2	0.0	0.2
JetBlue Airways Corporation	35,284	19,210	16,074	83.7	361,978	238,710	123,268	51.6	4.0	2.7	1.3
Mesa Airlines Inc.	31,860	11,822	20,038	169.5	318,369	239,846	78,523	32.7	3.5	2.7	0.8
Miami Air International Inc.	0	0	0	0.0	780	334	446	133.5	0.0	0.0	0.0
Midwest Airlines, Inc.	0	3,398	-3,398	-100.0	25,331	11,565	13,766	119.0	0.3	0.1	0.2
MN Airlines, LLC d/b/a Sun Country	0	0	0	0.0	102	272	-170	-62.5	0.0	0.0	0.0
Northwest Airlines	17,186	13,843	3,343	24.1	184,222	153,759	30,463	19.8	2.0	1.7	0.3
Pace Airlines	0	0	0	0.0	40	76	-36	-47.4	0.0	0.0	0.0
Pinnacle Airlines, Inc. dba Northwest Airlink	5,978	6,295	-317	-5.0	88,437	97,148	-8,711	-9.0	1.0	1.1	-0.1
Shuttle America Corporation	11,712	10,547	1,165	11.0	97,873	183,992	-86,119	-46.8	1.1	2.1	-1.0
SkyWest Airlines, Inc	7,224	14,962	-7,738	-51.7	189,755	188,303	1,452	0.8	2.1	2.1	0.0
Southwest Airlines	262,530	244,413	18,117	7.4	3,214,426	2,998,508	215,918	7.2	35.6	33.7	1.8
Trans States Airlines, Inc	2,483	0	2,483	0.0	21,444	20,439	1,005	4.9	0.2	0.2	0.0
United Airlines, Inc.	11,994	16,480	-4,486	-27.2	184,929	208,449	-23,520	-11.3	2.0	2.3	-0.3
US Airways Group, Inc.	7,755	17,469	-9,714	-55.6	150,209	177,156	-26,947	-15.2	1.7	2.0	-0.3
USA Jet Airlines, Inc.	0	89	-89	-100.0	16	89	-73	-82.0	0.0	0.0	0.0
<b>Report Totals</b>	<b>713,358</b>	<b>720,490</b>	<b>-7,132</b>	<b>-1.0%</b>	<b>9,039,075</b>	<b>8,885,391</b>	<b>153,684</b>	<b>1.7%</b>			

### Statistics Included in Report:

#### Domestic Passengers:

Enplaned Revenue, Deplaned Revenue, Through Revenue, Enplaned Non-Revenue, Deplaned Non-Revenue, Through Non-Revenue

#### International Passenger:

Enplaned Revenue, Deplaned Revenue, Through Revenue, Enplaned Non-Revenue, Deplaned Non-Revenue, Through Non-Revenue, South Terminal-Int'l Enplaned Revenue, South Terminal-Int'l Deplaned Revenue, South Terminal-Int'l Through Revenue, South Terminal-Int'l Enplaned Non-Revenue, South Terminal-Int'l Deplaned Non-Revenue, South Terminal-Int'l Through Non-Revenue

# Austin-Bergstrom International Airport

## Summary Landing Report

### Landing Type: Total

Month	2008		2007		2006		% Change 2008 - 2007		% Change 2007 - 2006	
	Count	Weight	Count	Weight	Count	Weight	Count	Weight	Count	Weight
January	4,995	508,563,011	4,269	461,169,144	4,315	454,283,479	17.01%	10.28%	-1.07%	1.52%
February	4,707	477,510,902	4,084	433,092,352	4,039	431,045,336	15.25%	10.26%	1.11%	0.47%
March	5,057	511,086,453	4,693	498,304,509	4,753	489,791,305	7.76%	2.57%	-1.26%	1.74%
April	4,853	498,467,860	4,659	485,924,900	4,515	460,181,145	4.16%	2.58%	3.19%	5.59%
May	5,213	542,161,220	5,116	524,923,078	4,701	488,777,890	1.90%	3.28%	8.83%	7.40%
June	5,252	551,158,994	5,006	521,808,372	4,603	473,474,518	4.91%	5.62%	8.76%	10.21%
July	5,097	553,506,814	5,245	543,679,941	4,600	474,488,279	-2.82%	1.81%	14.02%	14.58%
August	5,006	550,514,204	5,453	559,884,838	4,700	487,717,207	-8.20%	-1.67%	16.02%	14.80%
September	4,261	481,994,314	5,107	513,882,056	4,465	468,401,170	-16.57%	-6.21%	14.38%	9.71%
October	4,550	518,348,013	5,373	539,788,979	4,744	495,772,214	-15.32%	-3.97%	13.26%	8.88%
November	4,200	480,660,098	5,053	515,341,963	4,494	476,125,637	-16.88%	-6.73%	12.44%	8.24%
December	4,320	491,983,692	4,997	511,272,858	4,598	484,969,931	-13.55%	-3.77%	8.68%	5.42%
<b>Totals for Selected Period</b>	57,511	6,165,955,575	59,055	6,109,072,990	54,527	5,685,028,111	-2.61%	0.93%	8.30%	7.46%
<b>Yearly Totals</b>	57,511	6,165,955,575	59,055	6,109,072,990	54,527	5,685,028,111			8.30%	7.46%