

Austin-Bergstrom International Airport

Aviation Activity Report

	08/2009	08/2008	Percent Change	01/2009 - 08/2009	01/2008 - 08/2008	Percent Change
<u>Passenger Activity</u>						
Domestic Enplaned Revenue	348,197	370,387	-5.99	2,621,808	2,929,398	-10.50
Domestic Deplaned Revenue	369,999	393,029	-5.86	2,633,543	2,927,986	-10.06
Domestic Through Revenue	0	16,769	-100.00	1,956	136,618	-98.57
International Enplaned Revenue	826	1,035	-20.19	6,148	8,591	-28.44
International Deplaned Revenue	1,100	1,082	1.66	6,450	8,835	-26.99
International Through Revenue	0	0	0.00	0	0	0.00
Domestic Enplaned Non-Revenue	11,352	11,957	-5.06	80,237	83,516	-3.93
Domestic Deplaned Non-Revenue	10,519	11,463	-8.24	76,478	81,109	-5.71
Domestic Through Non-Revenue	0	0	0.00	107	0	0.00
International Enplaned Non-Revenue	16	27	-40.74	218	123	77.24
International Deplaned Non-Revenue	10	36	-72.22	224	147	52.38
International Through Non-Revenue	0	0	0.00	0	0	0.00
South Terminal-Intl Enplaned Revenue	0	4,685	-100.00	8,095	23,360	-65.35
South Terminal-Intl Deplaned Revenue	0	4,957	-100.00	8,686	23,181	-62.53
South Terminal-Intl Through Revenue	0	0	0.00	0	0	0.00
South Terminal-Intl Enplaned Non-Revenue	0	0	0.00	0	0	0.00
South Terminal-Intl Deplaned Non-Revenue	0	0	0.00	0	0	0.00
South Terminal-Intl Through Non-Revenue	0	0	0.00	0	0	0.00
Passenger Totals	742,019	815,427	-9.00	5,443,950	6,222,864	-12.52

CURRENT PASSENGER RECORD = 869,308

RECORD SET = JUNE 2008

Aircraft Operations

Air Carrier	7,910	9,359	-15.48	62,108	72,412	-14.23
Commuter & Air Taxi	1,490	1,974	-24.52	11,280	20,600	-45.24
Military	677	379	78.63	4,167	3,666	13.67
General Aviation						
Itinerant	4,528	5,198	-12.89	37,555	47,570	-21.05
Local	254	312	-18.59	1,543	1,951	-20.91
Total G.A.	4,782	5,510	-13.21	39,098	49,521	-21.05
Total Operations	14,859	17,222	-13.72	116,653	146,199	-20.21

Austin-Bergstrom International Airport

Aviation Activity Report

	08/2009	08/2008	Percent Change	01/2009 - 08/2009	01/2008 - 08/2008	Percent Change
<u>Cargo Activity</u>						
Mail						
Domestic Enplaned Mail	108,307	175,641	-38.34	848,911	1,507,386	-43.68
Domestic Deplaned Mail	252,882	338,673	-25.33	2,652,347	2,872,079	-7.65
International Enplaned Mail	0	0	0.00	0	0	0.00
International Deplaned Mail	0	0	0.00	0	0	0.00
South Terminal-Intl Enplaned Mail	0	0	0.00	0	0	0.00
South Terminal-Intl Deplaned Mail	0	0	0.00	0	0	0.00
Mail Totals	361,189	514,314	-29.77	3,501,258	4,379,465	-20.05
Cargo						
Domestic Enplaned Cargo	5,273,036	8,276,483	-36.29	46,377,993	65,427,289	-29.12
Domestic Deplaned Cargo	4,853,504	6,729,134	-27.87	39,515,140	52,394,235	-24.58
International Enplaned Cargo	309,081	351,088	-11.96	2,299,509	3,205,217	-28.26
International Deplaned Cargo	0	0	0.00	0	0	0.00
South Terminal-Intl Enplaned Cargo	0	0	0.00	0	0	0.00
South Terminal-Intl Deplaned Cargo	0	0	0.00	0	0	0.00
Cargo Totals	10,435,621	15,356,705	-32.05	88,192,642	121,026,741	-27.13
Belly Freight						
Domestic Enplaned Belly Freight	549,845	741,407	-25.84	5,729,345	7,755,107	-26.12
Domestic Deplaned Belly Freight	505,145	857,656	-41.10	4,229,086	6,454,934	-34.48
International Enplaned Belly Freight	0	0	0.00	0	0	0.00
International Deplaned Belly Freight	0	0	0.00	0	0	0.00
South Terminal-Intl Enplaned Belly Frt	0	0	0.00	0	0	0.00
South Terminal-Intl Deplaned Belly Frt	0	0	0.00	0	0	0.00
Belly Freight Totals	1,054,990	1,599,063	-34.02	9,958,431	14,210,041	-29.92
Cargo Totals (Mail, Cargo, Belly Freight)	11,851,800	17,470,082	-32.16	101,652,331	139,616,247	-27.19

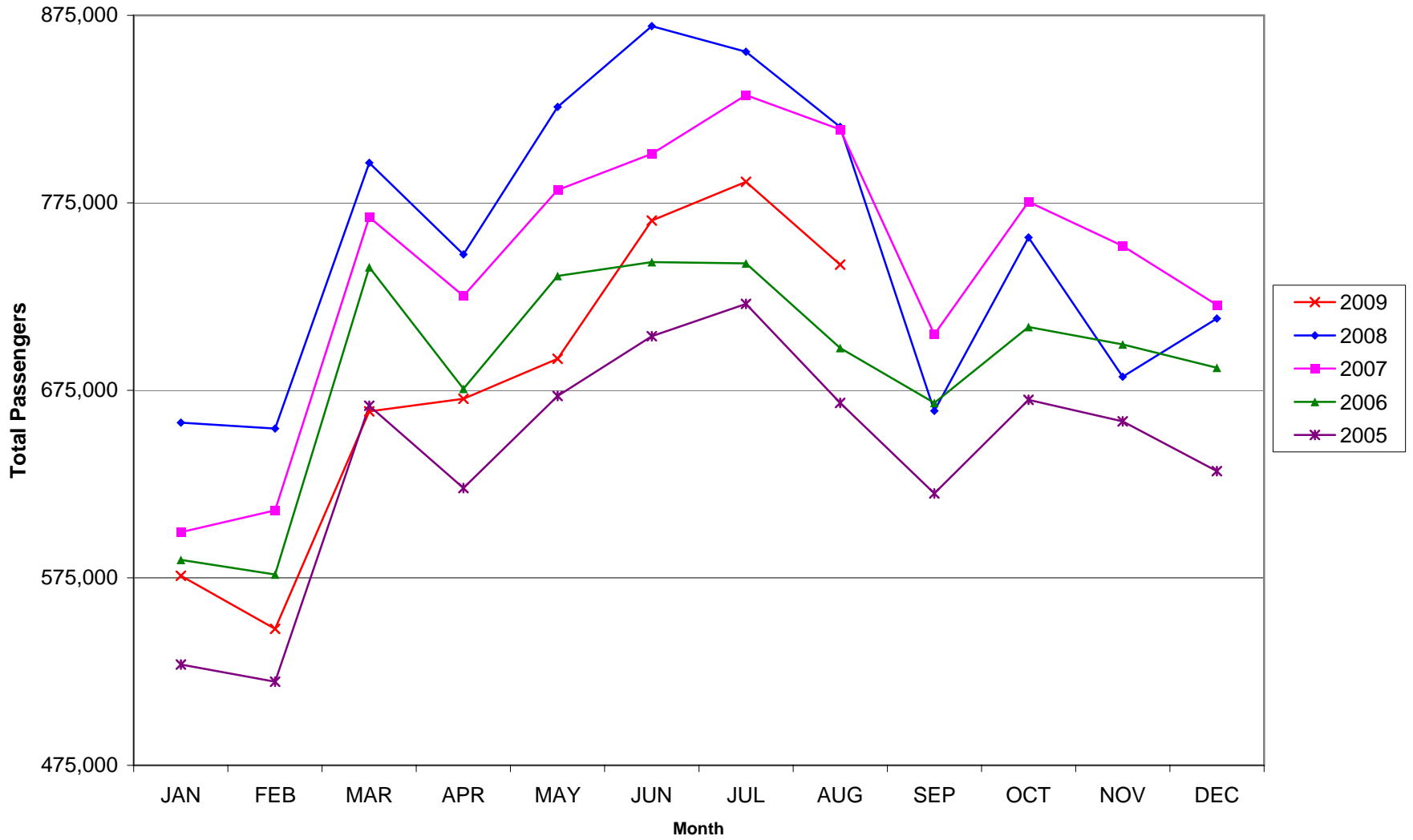
CURRENT CARGO RECORD = 40,215,518

RECORD SET = MARCH 2001

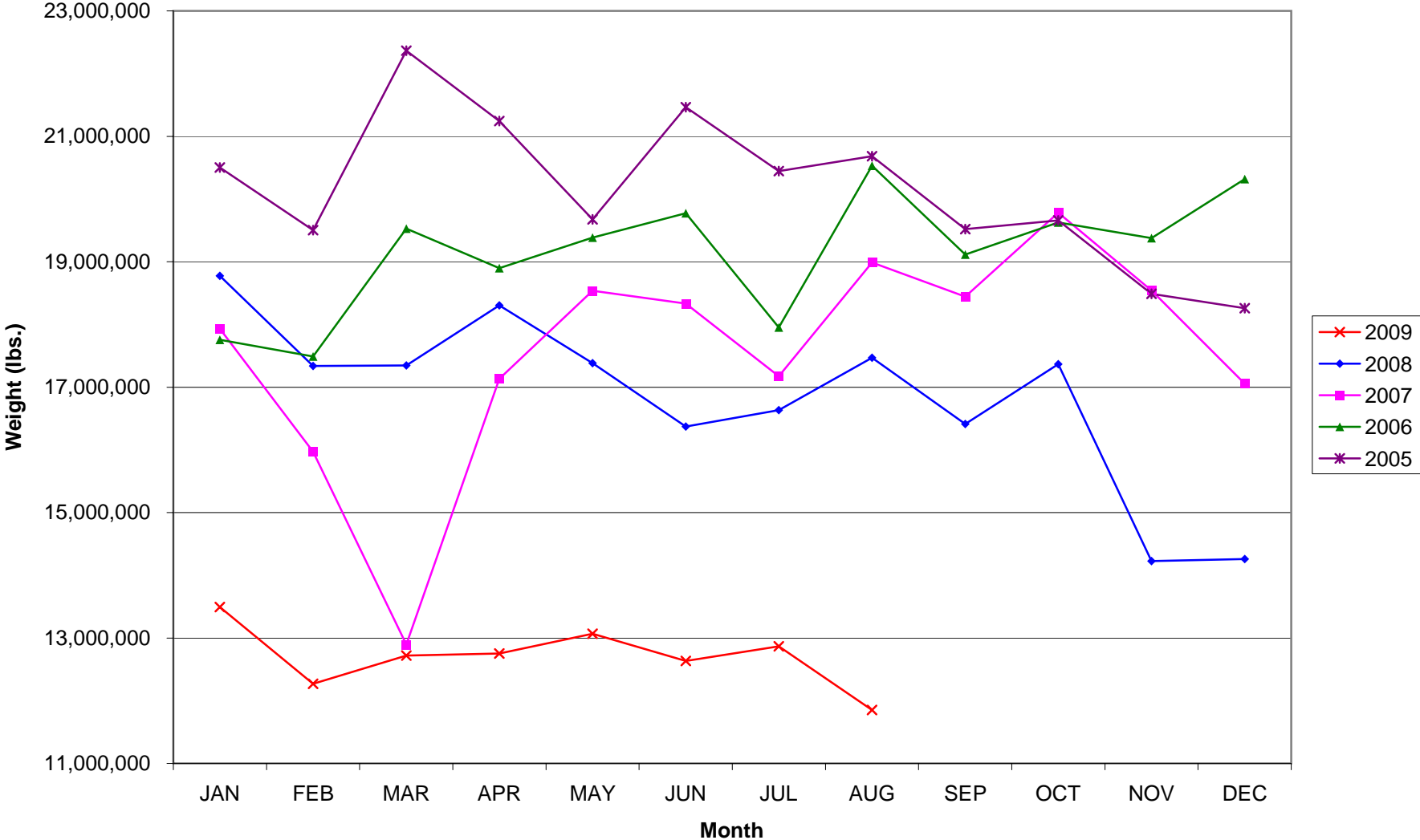
AUS – Airline Codes
August 2009

<u>Code</u>	<u>Carrier</u>
AS	Alaska Airlines, Inc.
G4	Allegiant Air
AA	American Airlines, Inc.
XP	Casino Express Airways
RP	Chautauqua Airlines, Inc.
CO	Continental Airlines
DL	Delta Airlines
F9	Frontier Airlines DIP
QK	Jazz Air LP
B6	JetBlue Airways Corp.
YV	Mesa Airlines, Inc.
S5	Shuttle America Corp. (Delta Connection)
OO	SkyWest Airlines, Inc.
WN	Southwest Airlines
UA	United Airlines, Inc. (GoJet Airlines dba United Express)
V2	Vision Airlines

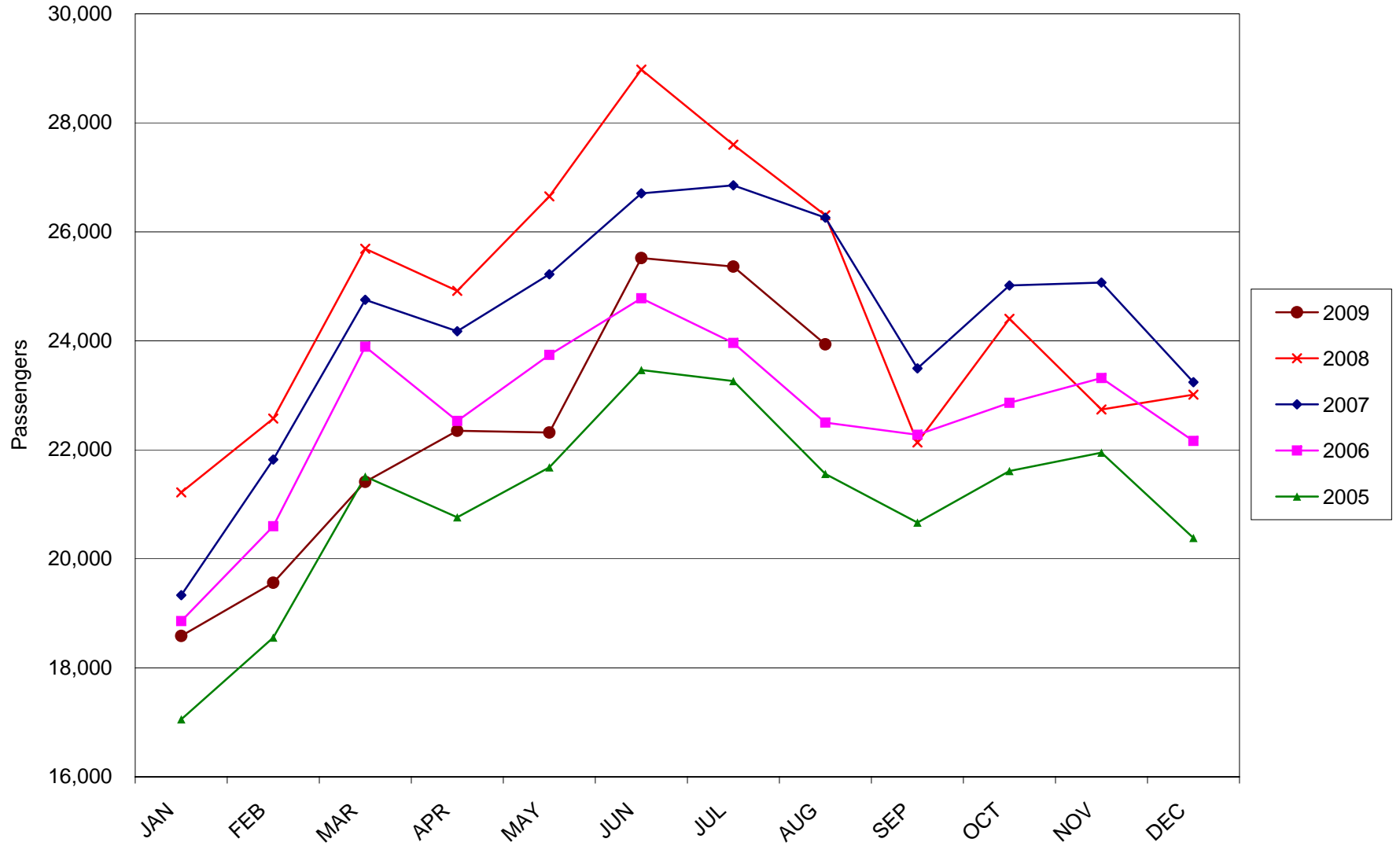
AUSTIN PASSENGER TRAFFIC



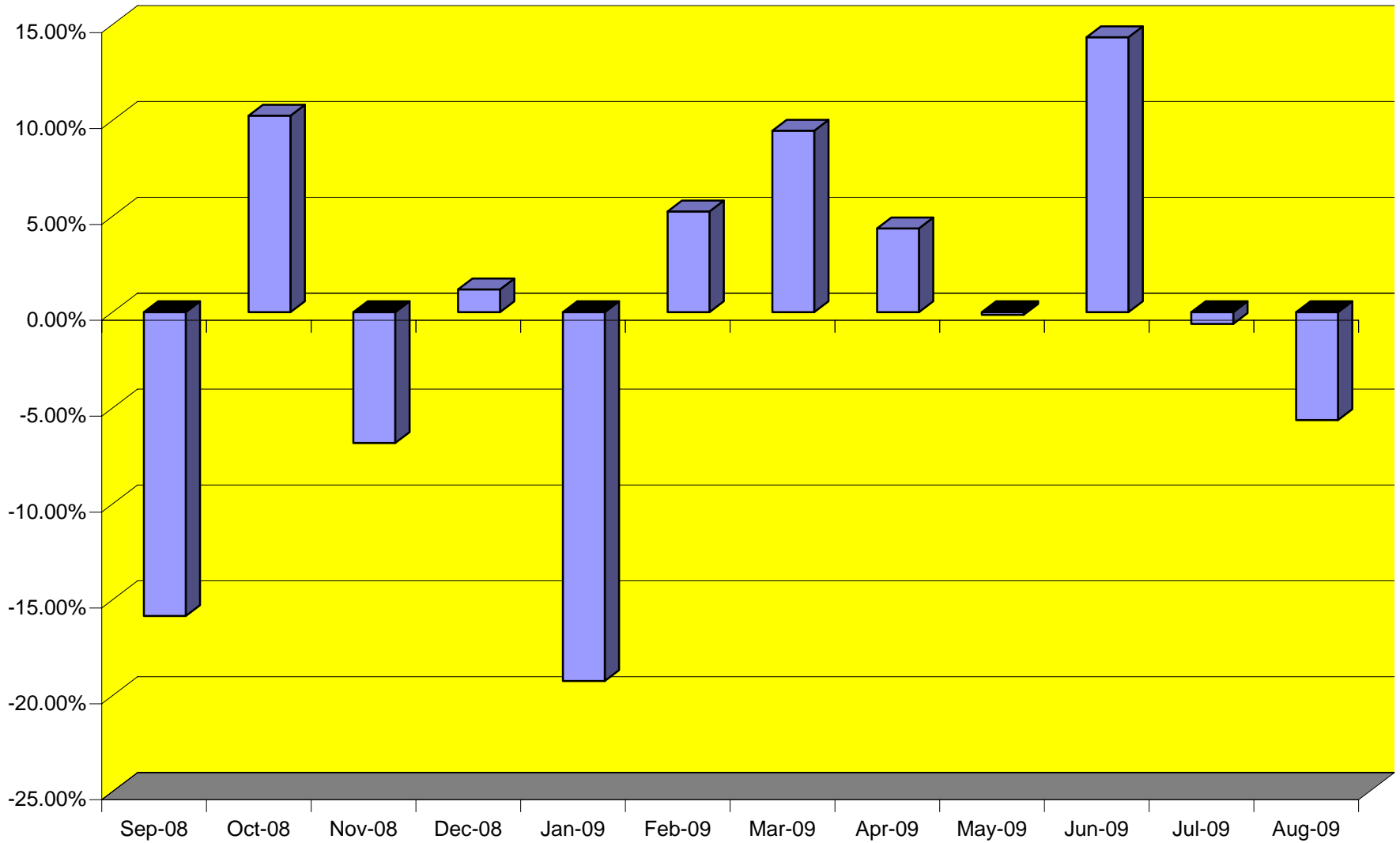
TOTAL CARGO POUNDAGE - AUSTIN, TEXAS



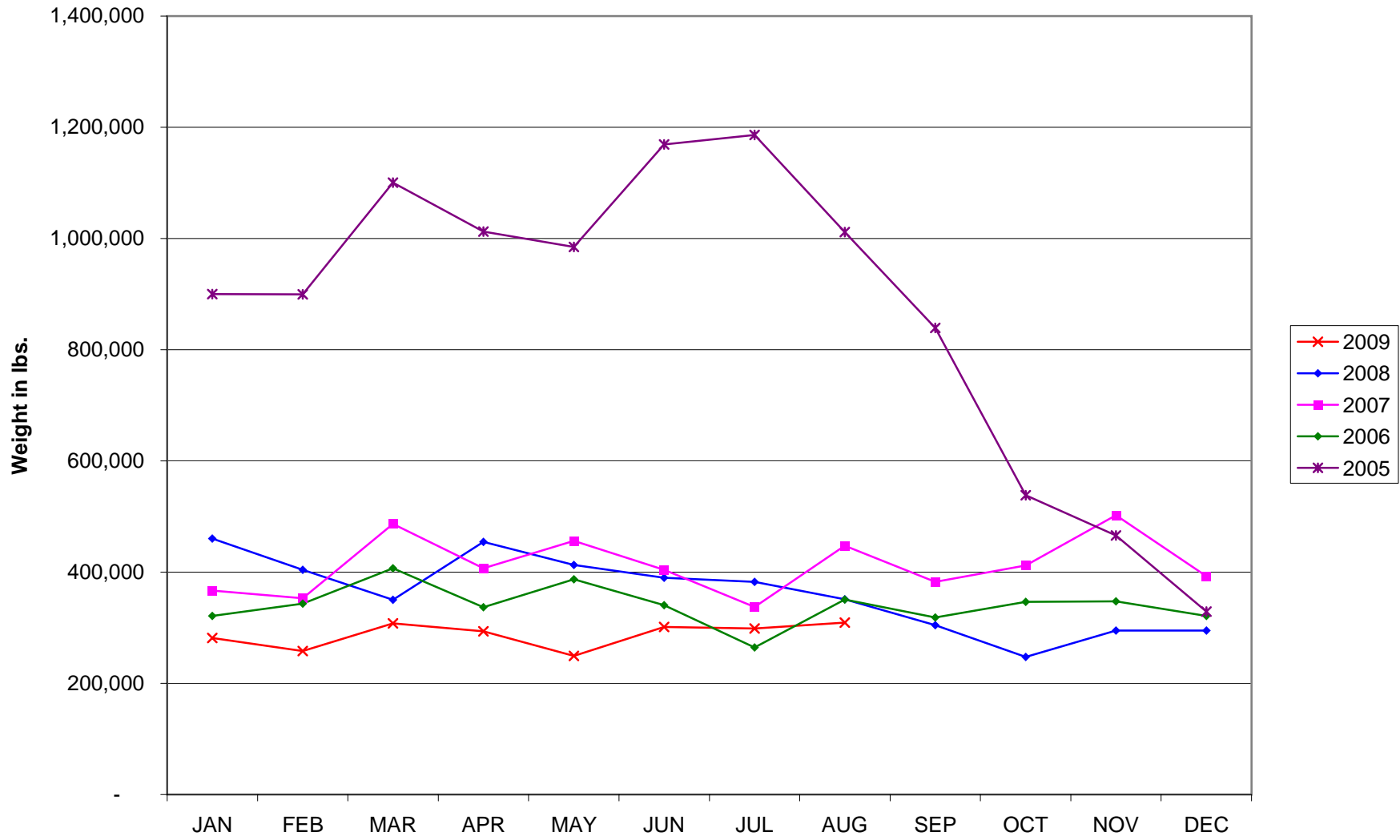
Average Daily Passengers



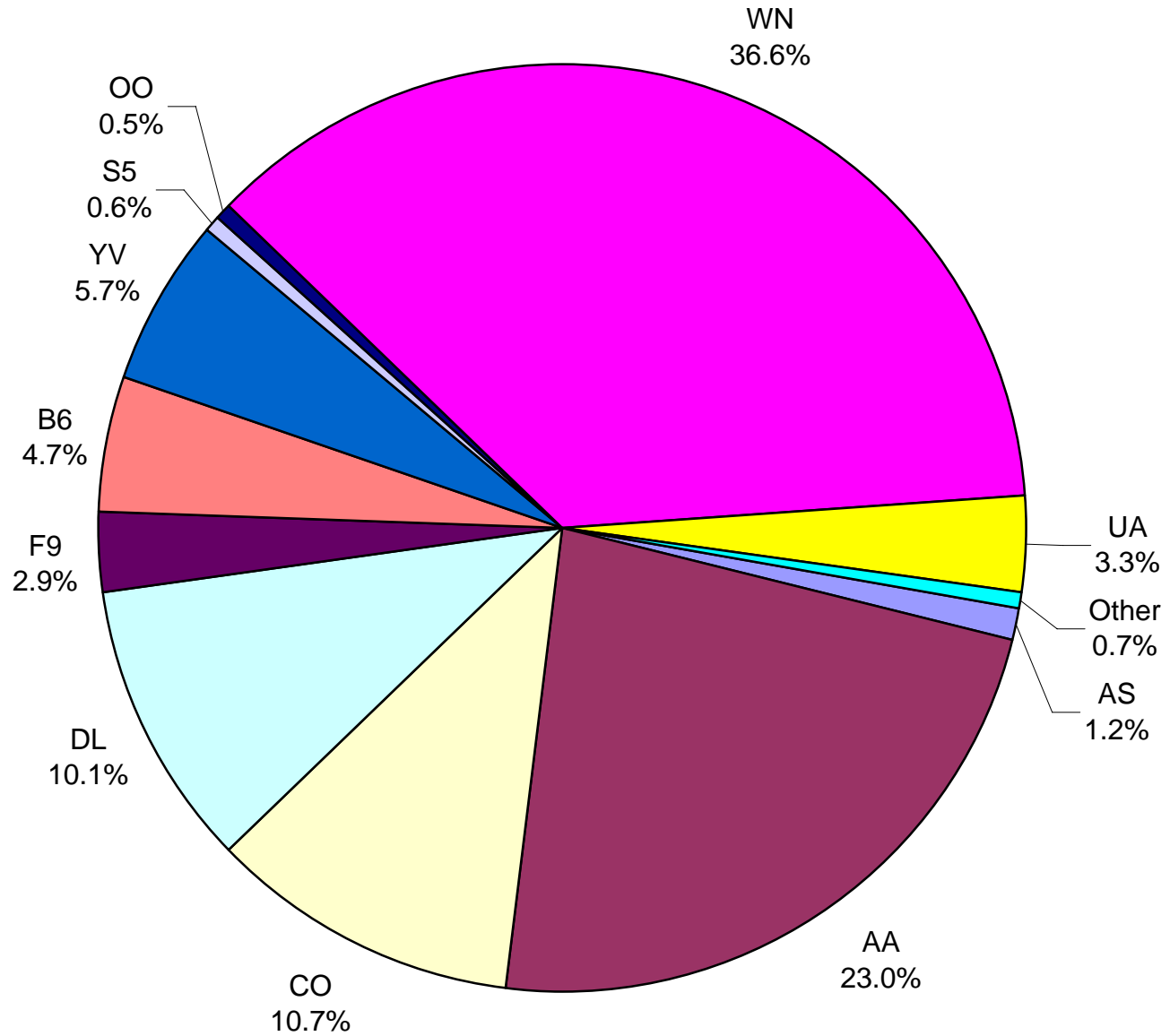
Monthly % Change in Average Daily Passengers



History of International Air Cargo



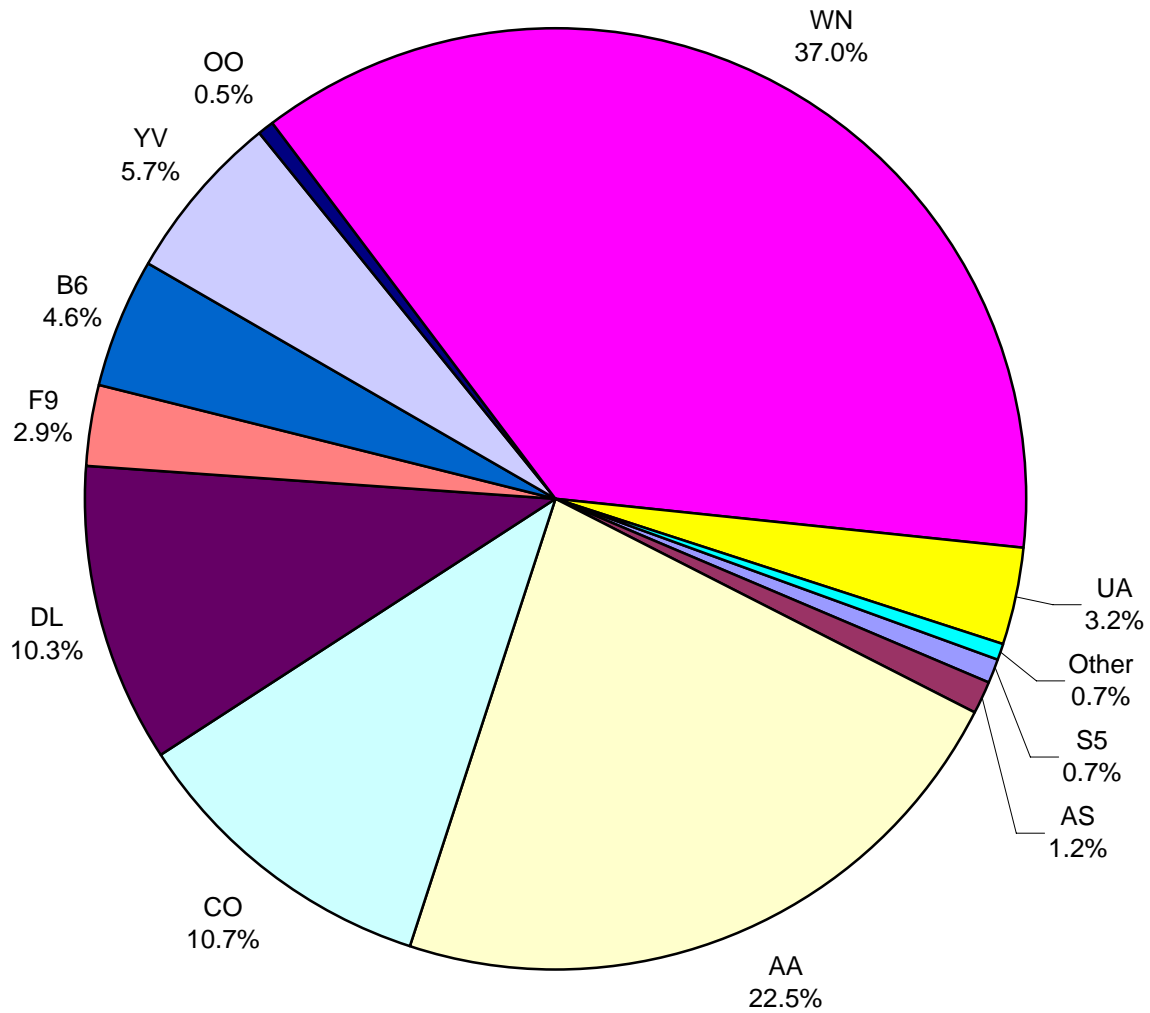
**Total Passengers
August 2009**



Other = Allegiant Air, Casino Express Airways, Chautauqua Airlines, Jazz Air L.P. and Vision Airlines.

Note: United Airlines percentage includes sub-contractors.

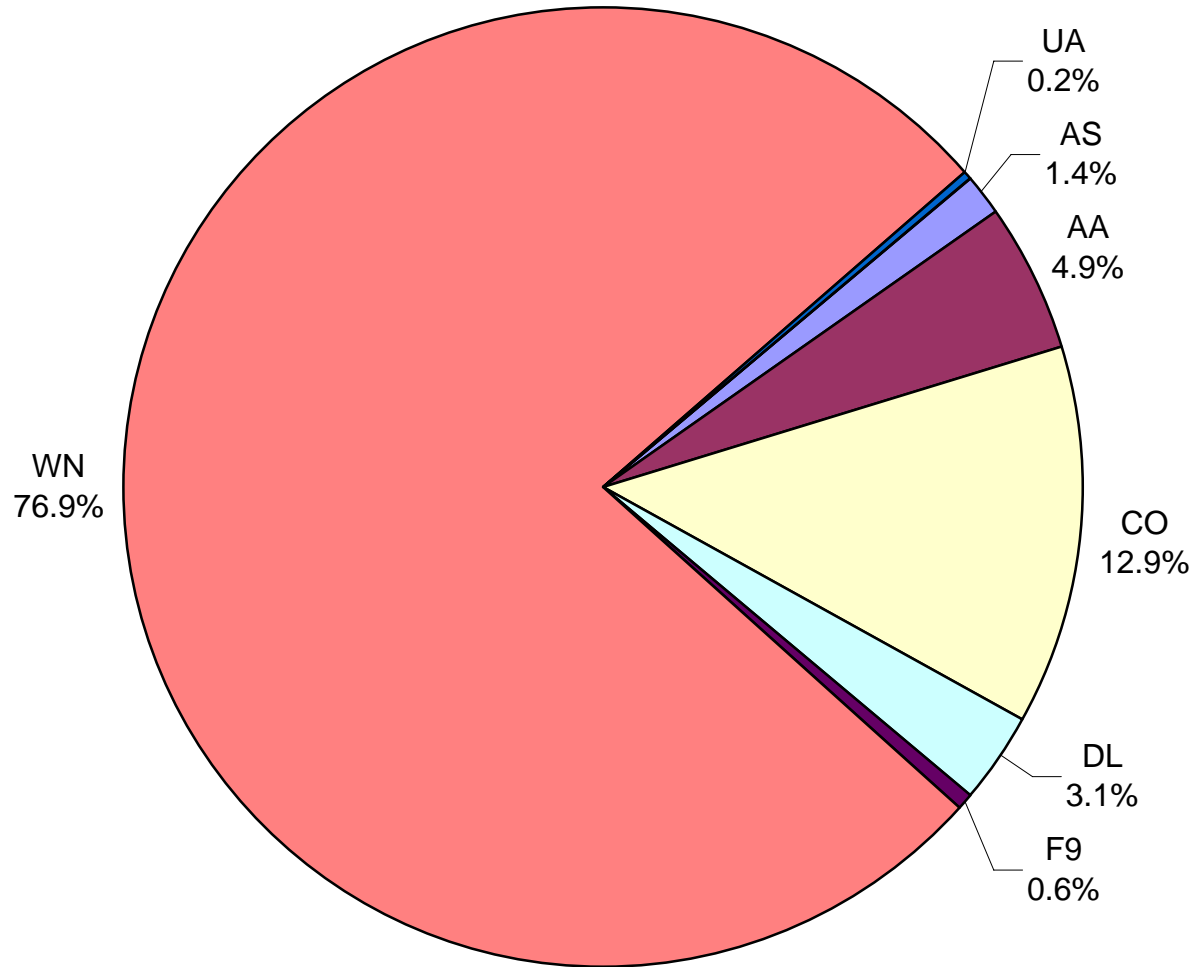
**All Passenger Carriers
Enplaned Revenue Passengers
August 2009**



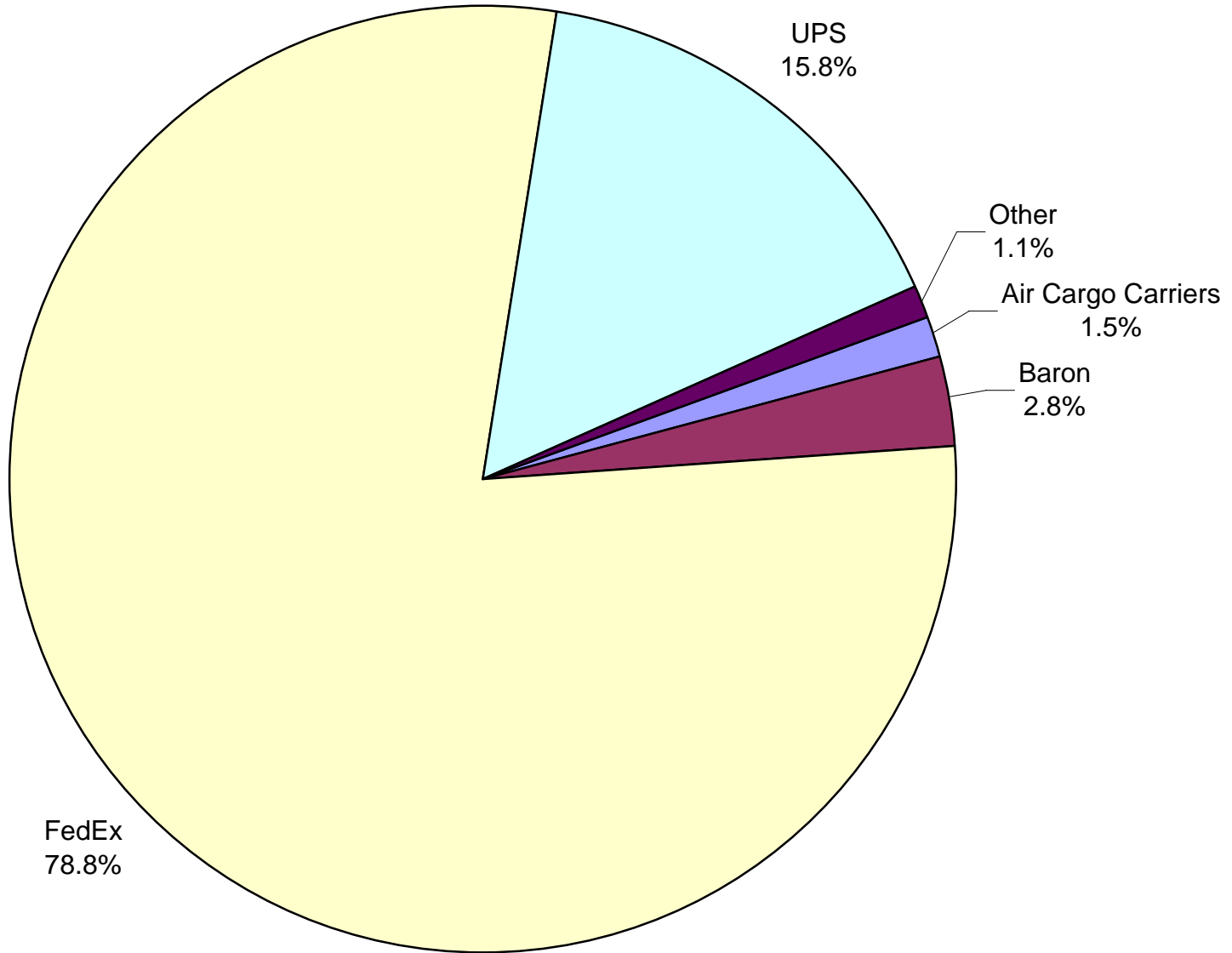
Other = Allegiant Air, Casino Express Airways,
Chautauqua Airlines and Jazz Air L.P.

Note: United Airlines
percentage includes sub-
contractors.

**AUS Belly Freight Market Shares
August 2009**

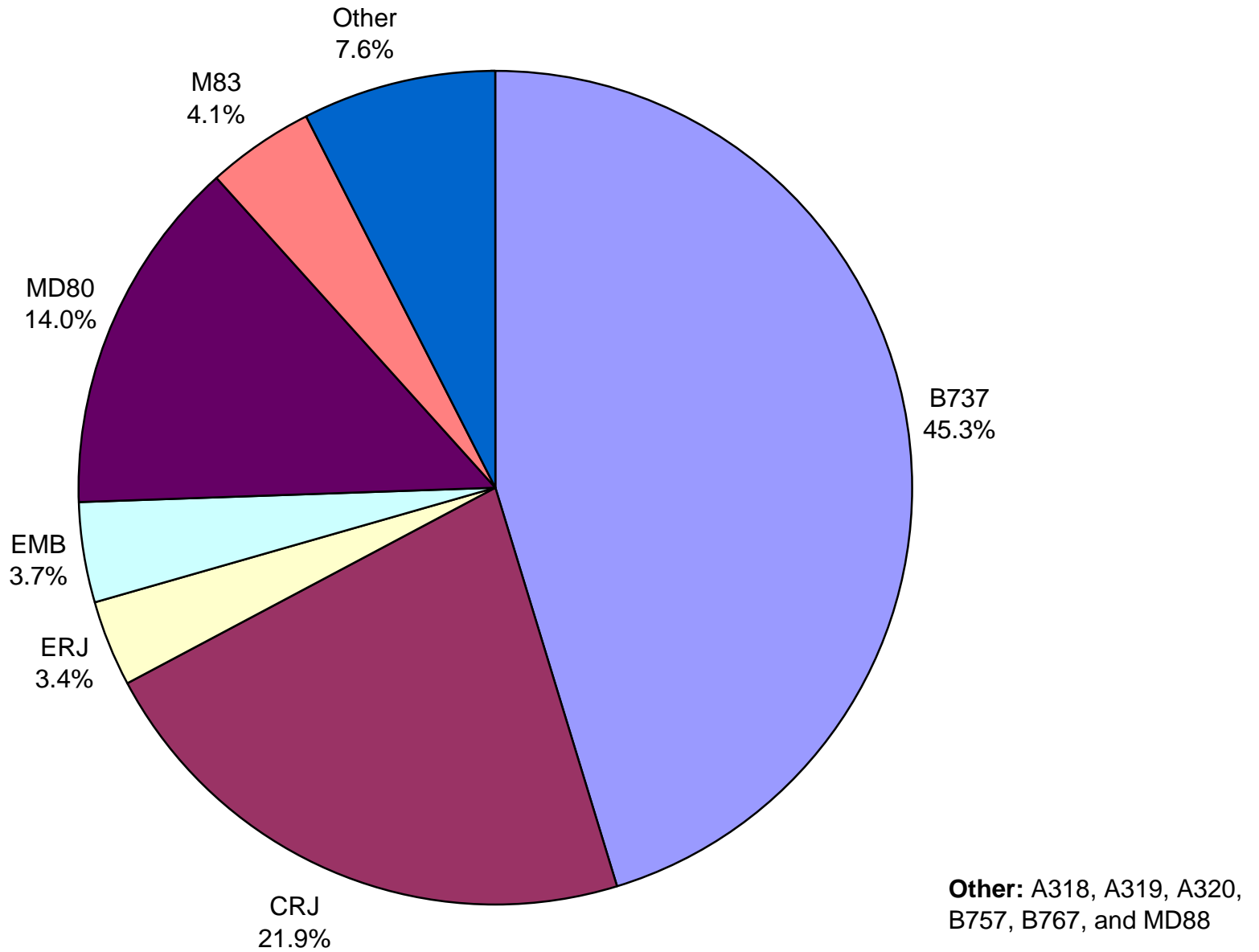


**Air Cargo Market Shares
August 2009**

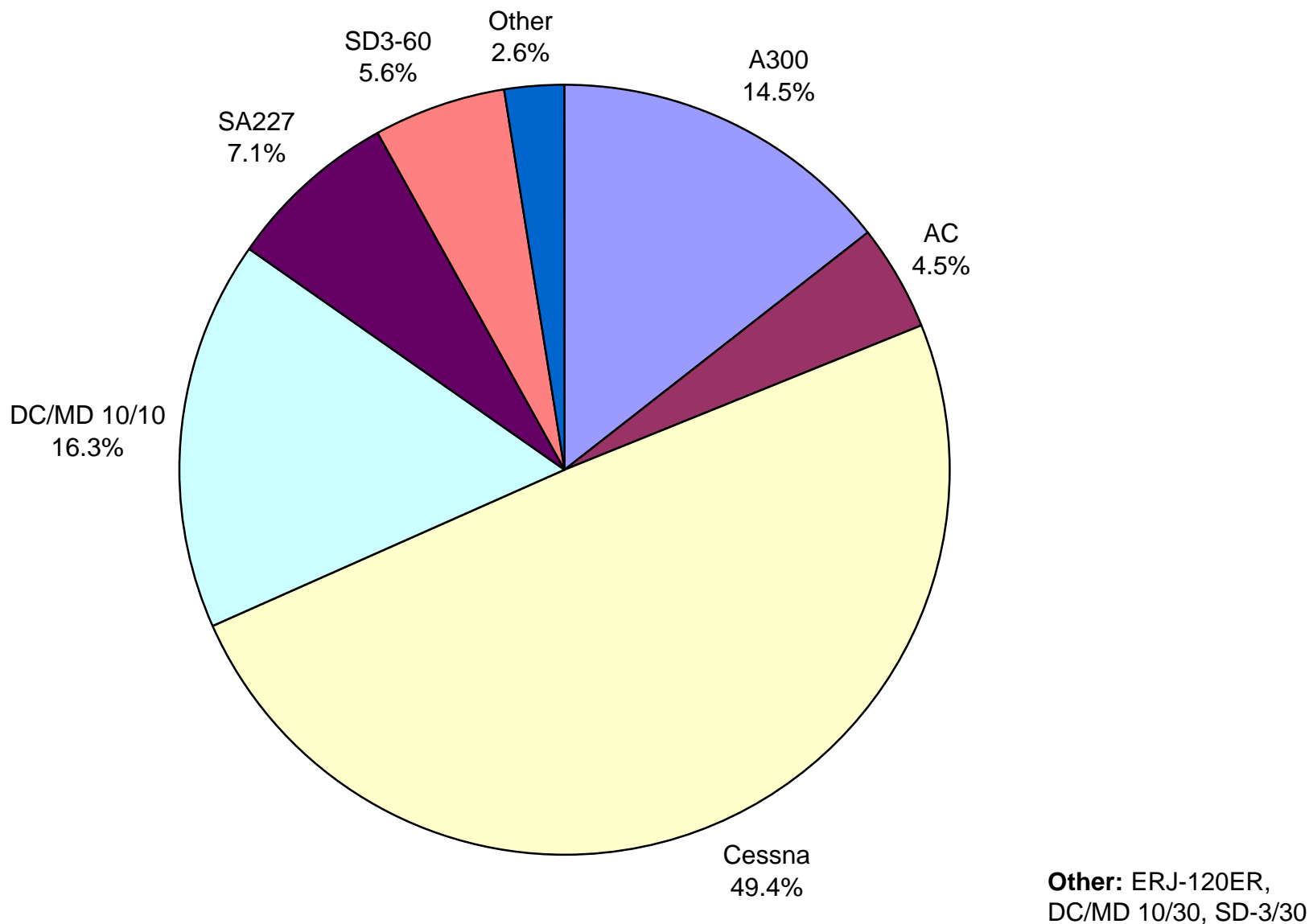


Other: Ameriflight, Lone Star Overnight L.P. and Martinaire Partners L.P.

**AUS Scheduled Passenger Aircraft Fleet Mix
August 2009**



**AUS Scheduled Cargo Aircraft Fleet Mix
August 2009**



Austin-Bergstrom International Airport

PAX Detail Report - August, 2009

Company	08/2009	08/2008	Period		YTD 2009	YTD 2008	YTD		2009 Share	2008 Share	Share Diff
			Difference	Change			Difference	Change			
Aero Mexico Airlines/Aerovias de Mexico, S.A. de C.V.	0	0	0	0.0	0	10,584	-10,584	-100.0	0.0	0.2	-0.2
Aeroenlaces Nacionales S.A. DE C.V./vivaAerobus	0	9,642	-9,642	-100.0	16,781	43,664	-26,883	-61.6	0.3	0.7	-0.4
Alaska Airlines, Inc. - Non-Signatory Operating Agreement	8,740	0	8,740	0.0	8,740	0	8,740	0.0	0.2	0.0	0.2
Allegiant Air	499	813	-314	-38.6	1,748	2,723	-975	-35.8	0.0	0.0	0.0
American Airlines, Inc	170,605	194,461	-23,856	-12.3	1,249,422	1,554,841	-305,419	-19.6	23.0	25.0	-2.0
Atlantic Southeast Airlines, Inc.	0	3,606	-3,606	-100.0	10,833	44,868	-34,035	-75.9	0.2	0.7	-0.5
Casino Express Airways	297	0	297	0.0	1,468	1,347	121	9.0	0.0	0.0	0.0
Chautauqua Airlines Inc.	2,267	2,145	122	5.7	9,280	15,854	-6,574	-41.5	0.2	0.3	-0.1
Continental Airlines	79,423	81,973	-2,550	-3.1	621,132	659,184	-38,052	-5.8	11.4	10.6	0.8
Delta Airlines	75,148	44,473	30,675	69.0	363,014	317,693	45,321	14.3	6.7	5.1	1.6
Delta Airlines/Pinnacle	0	638	-638	-100.0	10,699	638	10,061	1,577.0	0.2	0.0	0.2
Express Jet Airlines, Inc.	0	13,141	-13,141	-100.0	0	126,750	-126,750	-100.0	0.0	2.0	-2.0
Frontier Airlines DIP	21,403	21,544	-141	-0.7	154,717	97,010	57,707	59.5	2.8	1.6	1.3
Frontier Airlines, Inc. - Pre Bankruptcy	0	0	0	0.0	0	60,210	-60,210	-100.0	0.0	1.0	-1.0
GoJet Airlines d/b/a United Express	11,429	0	11,429	0.0	53,595	0	53,595	0.0	1.0	0.0	1.0
JAZZ Air LP	1,952	2,180	-228	-10.5	13,040	9,989	3,051	30.5	0.2	0.2	0.1
JetBlue Airways Corporation	34,980	37,364	-2,384	-6.4	281,422	227,291	54,131	23.8	5.2	3.7	1.5
Mesa Airlines Inc.	42,387	39,529	2,858	7.2	332,463	197,418	135,045	68.4	6.1	3.2	2.9
Miami Air International Inc.	0	167	-167	-100.0	0	509	-509	-100.0	0.0	0.0	0.0
Midwest Airlines, Inc.	0	0	0	0.0	0	25,331	-25,331	-100.0	0.0	0.4	-0.4
MN Airlines, LLC d/b/a Sun Country	0	0	0	0.0	0	102	-102	-100.0	0.0	0.0	0.0
Northwest Airlines	0	20,624	-20,624	-100.0	28,533	115,635	-87,102	-75.3	0.5	1.9	-1.3
Pace Airlines	0	0	0	0.0	157	40	117	292.5	0.0	0.0	0.0
Pinnacle Airlines, Inc. dba Northwest Airlin	0	4,802	-4,802	-100.0	9,070	66,212	-57,142	-86.3	0.2	1.1	-0.9
Shuttle America Corporation	4,804	3,549	1,255	35.4	46,171	71,359	-25,188	-35.3	0.8	1.1	-0.3
SkyWest Airlines, Inc	4,054	20,579	-16,525	-80.3	62,862	134,018	-71,156	-53.1	1.2	2.2	-1.0
Southwest Airlines	271,225	281,520	-10,295	-3.7	2,067,532	2,181,055	-113,523	-5.2	38.0	35.0	2.9
Trans States Airlines, Inc	0	2,430	-2,430	-100.0	6,844	11,687	-4,843	-41.4	0.1	0.2	-0.1
United Airlines, Inc.	12,674	17,668	-4,994	-28.3	92,477	136,288	-43,811	-32.1	1.7	2.2	-0.5
US Airways Group, Inc.	0	12,579	-12,579	-100.0	1,279	110,548	-109,269	-98.8	0.0	1.8	-1.8
USA Jet Airlines, Inc.	0	0	0	0.0	0	16	-16	-100.0	0.0	0.0	0.0
Vision Airlines, Inc.	132	0	132	0.0	671	0	671	0.0	0.0	0.0	0.0
Report Totals	742,019	815,427	-73,408	-9.0%	5,443,950	6,222,864	-778,914	-12.5%			

Statistics included in Report

Domestic Passengers:

International Passengers:

Enplaned Revenue, Deplaned Revenue, Through Revenue, Enplaned Non-Revenue, Deplaned Non-Revenue, Through Non-Revenue
 Enplaned Revenue, Deplaned Revenue, Through Revenue, Enplaned Non-Revenue, Deplaned Non-Revenue, Through Non-Revenue, South Terminal-Intl Enplaned
 Revenue, South Terminal-Intl Deplaned Revenue, South Terminal-Intl Through Revenue, South Terminal-Intl Enplaned Non-Revenue, South Terminal-Intl Deplaned Non-
 Revenue, South Terminal-Intl Through Non-Revenue

Austin-Bergstrom International Airport

Summary Landing Report

Landing Type: Total

Month	2009		2008		2007		% Change 2009 - 2008		% Change 2008 - 2007	
	Count	Weight	Count	Weight	Count	Weight	Count	Weight	Count	Weight
January	4,170	470,332,445	4,995	508,563,011	4,269	461,169,144	-16.52%	-7.52%	17.01%	10.28%
February	3,797	422,370,904	4,707	477,510,902	4,084	433,092,352	-19.33%	-11.55%	15.25%	10.26%
March	4,152	463,150,645	5,057	511,086,453	4,693	498,304,509	-17.90%	-9.38%	7.76%	2.57%
April	4,079	449,905,157	4,853	498,467,860	4,659	485,924,900	-15.95%	-9.74%	4.16%	2.58%
May	4,151	460,790,244	5,213	542,161,220	5,116	524,923,078	-20.37%	-15.01%	1.90%	3.28%
June	4,222	465,414,109	5,252	551,158,994	5,006	521,808,372	-19.61%	-15.56%	4.91%	5.62%
July	4,396	482,073,439	5,097	553,506,814	5,245	543,679,941	-13.75%	-12.91%	-2.82%	1.81%
August	4,325	473,499,273	5,006	550,432,204	5,453	559,884,838	-13.60%	-13.98%	-8.20%	-1.69%
September			4,261	481,973,814	5,107	513,882,056			-16.57%	-6.21%
October			4,550	518,286,513	5,373	539,788,979			-15.32%	-3.98%
November			4,200	480,619,098	5,053	515,341,963			-16.88%	-6.74%
December			4,322	492,132,192	4,997	511,272,858			-13.51%	-3.74%
Totals for Selected Period	33,292	3,687,536,216	40,180	4,192,887,458	38,525	4,028,787,134	-17.14%	-12.05%	4.30%	4.07%
Yearly Totals	33,292	3,687,536,216	57,513	6,165,899,075	59,055	6,109,072,990			-2.61%	0.93%