

Austin-Bergstrom International Airport

Aviation Activity Report

	05/2008	05/2007	Percent Change	01/2008 - 05/2008	01/2007 - 05/2007	Percent Change
<u>Passenger Activity</u>						
Domestic Enplaned Revenue	391,533	379,136	3.27	1,741,875	1,654,899	5.26
Domestic Deplaned Revenue	382,691	364,078	5.11	1,744,524	1,653,003	5.54
Domestic Through Revenue	15,347	18,830	-18.50	81,764	84,726	-3.50
International Enplaned Revenue	1,797	925	94.27	5,100	3,750	36.00
International Deplaned Revenue	1,730	827	109.19	4,878	3,782	28.98
International Through Revenue	0	0	0.00	0	0	0.00
Domestic Enplaned Non-Revenue	10,739	9,113	17.84	46,975	43,112	8.96
Domestic Deplaned Non-Revenue	10,753	8,946	20.20	45,804	41,532	10.29
Domestic Through Non-Revenue	0	0	0.00	0	0	0.00
International Enplaned Non-Revenue	31	0	0.00	31	0	100.00
International Deplaned Non-Revenue	28	0	0.00	28	0	100.00
International Through Non-Revenue	0	0	0.00	0	0	0.00
South Terminal-Intl Enplaned Revenue	5,981	0	0.00	5,981	0	100.00
South Terminal-Intl Deplaned Revenue	5,562	0	0.00	5,562	0	100.00
South Terminal-Intl Through Revenue	0	0	0.00	0	0	0.00
South Terminal-Intl Enplaned Non-Revenue	0	0	0.00	0	0	0.00
South Terminal-Intl Deplaned Non-Revenue	0	0	0.00	0	0	0.00
South Terminal-Intl Through Non-Revenue	0	0	0.00	0	0	0.00
Passenger Totals	826,192	781,855	5.67	3,682,522	3,484,804	5.67
CURRENT PASSENGER RECORD =	832,455				RECORD SET = JULY 2007	
<u>Aircraft Operations</u>						
Air Carrier	9,405	8,895	5.73	43,935	40,621	8.16
Commuter & Air Taxi	2,690	2,623	2.55	13,884	10,612	30.83
Military	487	527	-7.59	2,665	2,631	1.29
General Aviation						
Itinerant	6,466	5,980	8.13	31,120	28,855	7.85
Local	298	528	-43.56	1,246	1,697	-26.58
Total G.A.	6,764	6,508	3.93	32,366	30,552	5.94
Total Operations	19,346	18,553	4.27	92,850	84,416	9.99

Austin-Bergstrom International Airport

Aviation Activity Report

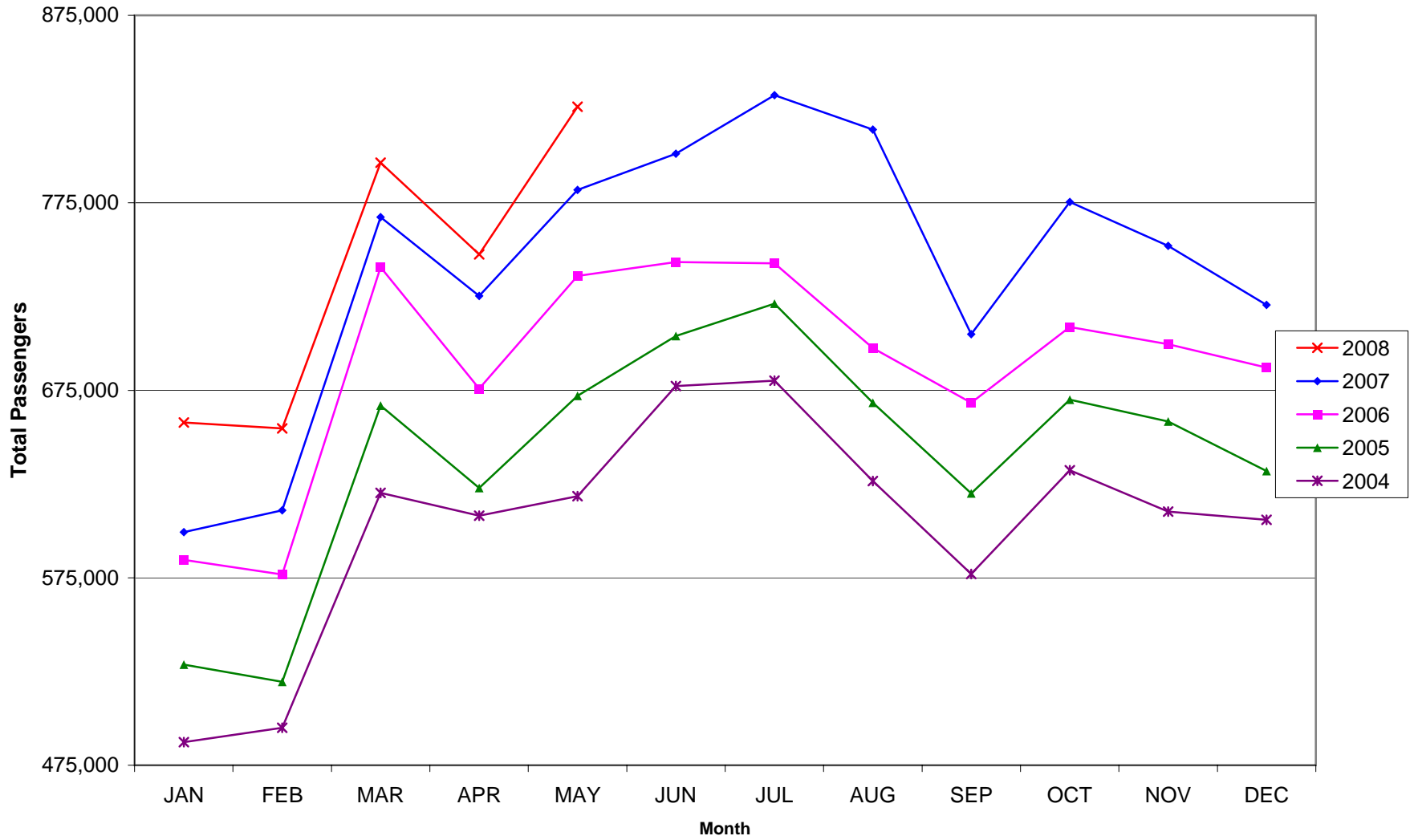
	05/2008	05/2007	Percent Change	01/2008 - 05/2008	01/2007 - 05/2007	Percent Change
<u>Cargo Activity</u>						
Mail						
Domestic Enplaned Mail	204,244	137,576	48.46	911,542	737,628	23.58
Domestic Deplaned Mail	399,123	226,916	75.89	1,632,489	1,564,606	4.34
International Enplaned Mail	0	0	0.00	0	15	-100.00
International Deplaned Mail	0	0	0.00	0	15	-100.00
South Terminal-Intl Enplaned Mail	0	0	0.00	0	0	0.00
South Terminal-Intl Deplaned Mail	0	0	0.00	0	0	0.00
Mail Totals	603,367	364,492	65.54	2,544,031	2,302,264	10.50
Cargo						
Domestic Enplaned Cargo	8,145,784	8,539,045	-4.61	41,664,221	36,033,981	15.62
Domestic Deplaned Cargo	6,512,736	7,252,003	-10.19	33,859,996	32,247,246	5.00
International Enplaned Cargo	413,083	456,113	-9.43	2,081,858	2,069,164	0.61
International Deplaned Cargo	0	0	0.00	0	0	0.00
South Terminal-Intl Enplaned Cargo	0	0	0.00	0	0	0.00
South Terminal-Intl Deplaned Cargo	0	0	0.00	0	0	0.00
Cargo Totals	15,071,603	16,247,161	-7.24	77,606,075	70,350,391	10.31
Belly Freight						
Domestic Enplaned Belly Freight	875,109	1,212,093	-27.80	4,976,842	6,096,310	-18.36
Domestic Deplaned Belly Freight	830,833	712,857	16.55	4,013,439	3,722,675	7.81
International Enplaned Belly Freight	0	0	0.00	0	0	0.00
International Deplaned Belly Freight	0	0	0.00	0	0	0.00
South Terminal-Intl Enplaned Belly Frt	0	0	0.00	0	0	0.00
South Terminal-Intl Deplaned Belly Frt	0	0	0.00	0	0	0.00
Belly Freight Totals	1,705,942	1,924,950	-11.38	8,990,281	9,818,985	-8.44
Cargo Totals (Mail, Cargo, Belly Freight)	17,380,912	18,536,603	-6.23	89,140,387	82,471,640	8.09
CURRENT CARGO RECORD =	40,215,518					RECORD SET = MARCH 2001

AUS – Airline Codes

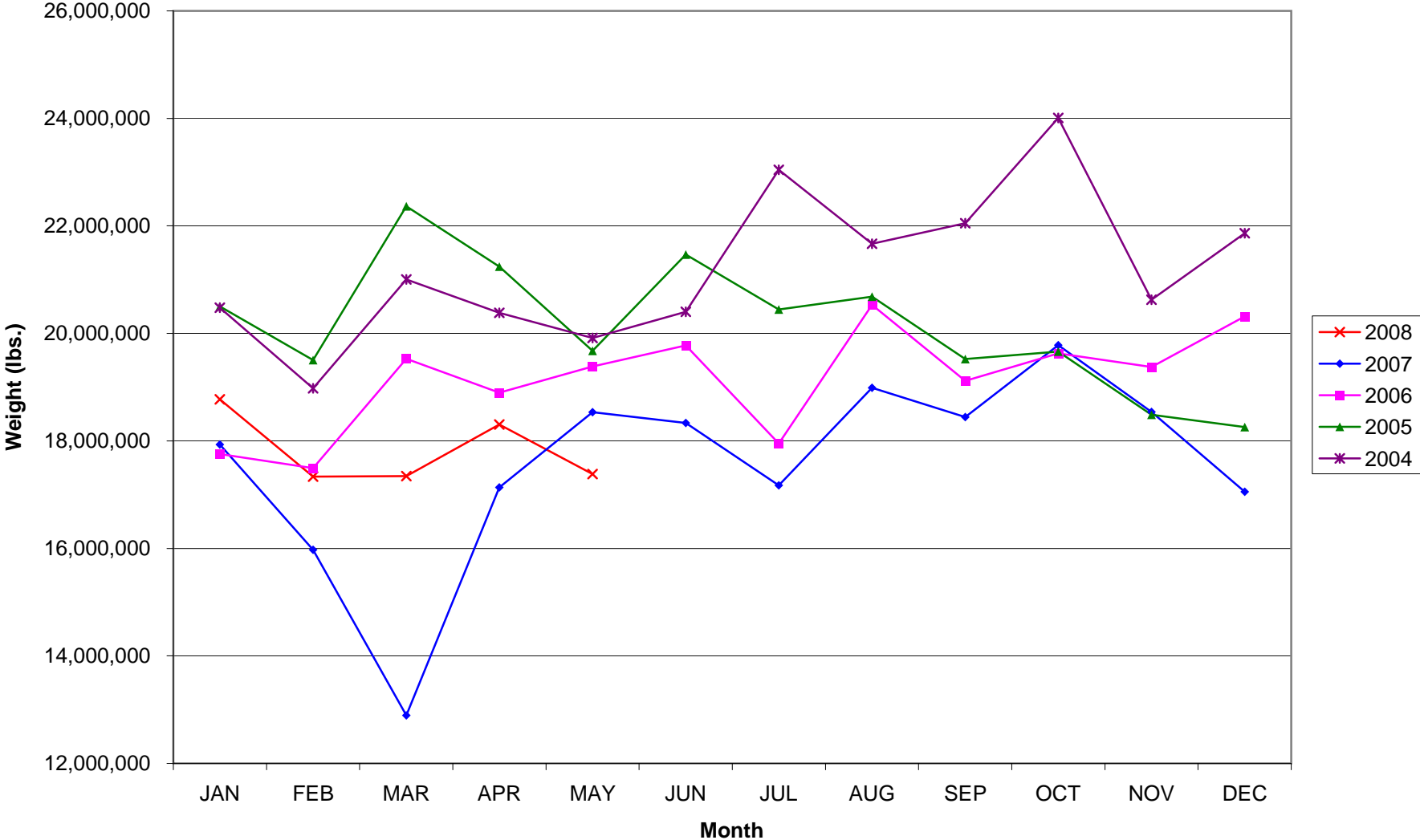
May 2008

<u>Code</u>	<u>Carrier</u>
AM	Aero Mexico/Aerovias de Mexico S.A. de C.V.
VB	Aeroenlaces Nacionales S.A. de C.V./vivaAerobus
G4	Allegiant Air
AA	American Airlines, Inc.
EV	Atlantic Southeast Airlines, Inc. (Delta Connection)
RP	Chautauqua Airlines, Inc.
CO	Continental Airlines
DL	Delta Airlines
XE	Express Jet Airlines, Inc.
F9	Frontier Airlines DIP
QK	Jazz Air LP
B6	JetBlue Airways Corp.
YV	Mesa Airlines, Inc.
YX	Midwest Airlines, Inc.
NW	Northwest Airlines
Y5	Pace Airlines
9E	Pinnacle Airlines, Inc./dba Northwest Airlinck
S5	Shuttle America Corp. (Delta Connection)
OO	SkyWest Airlines, Inc.
WN	Southwest Airlines
AX	Trans States Airlines, Inc.
UA	United Airlines, Inc.
US	US Airways Group, Inc.

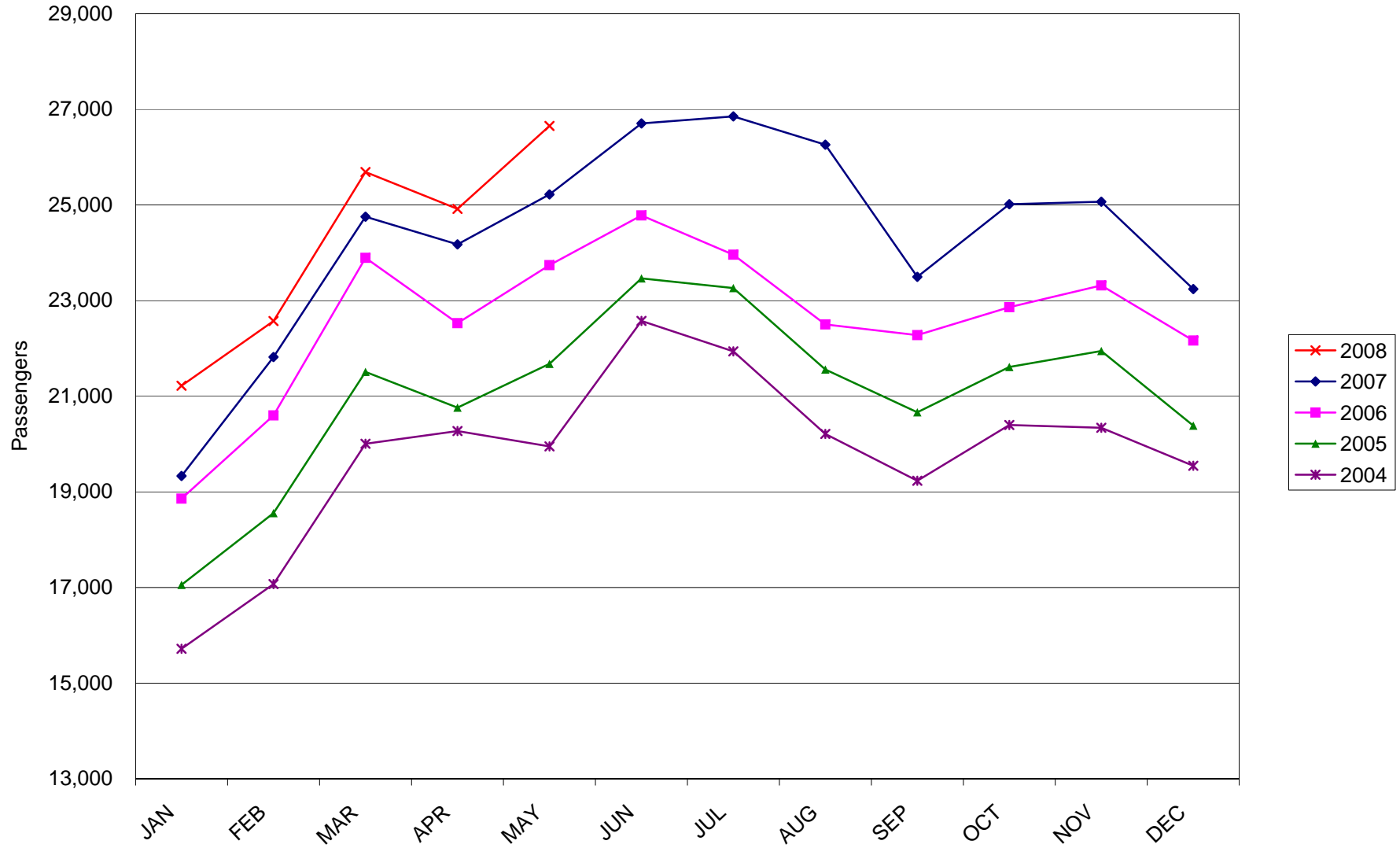
AUSTIN PASSENGER TRAFFIC



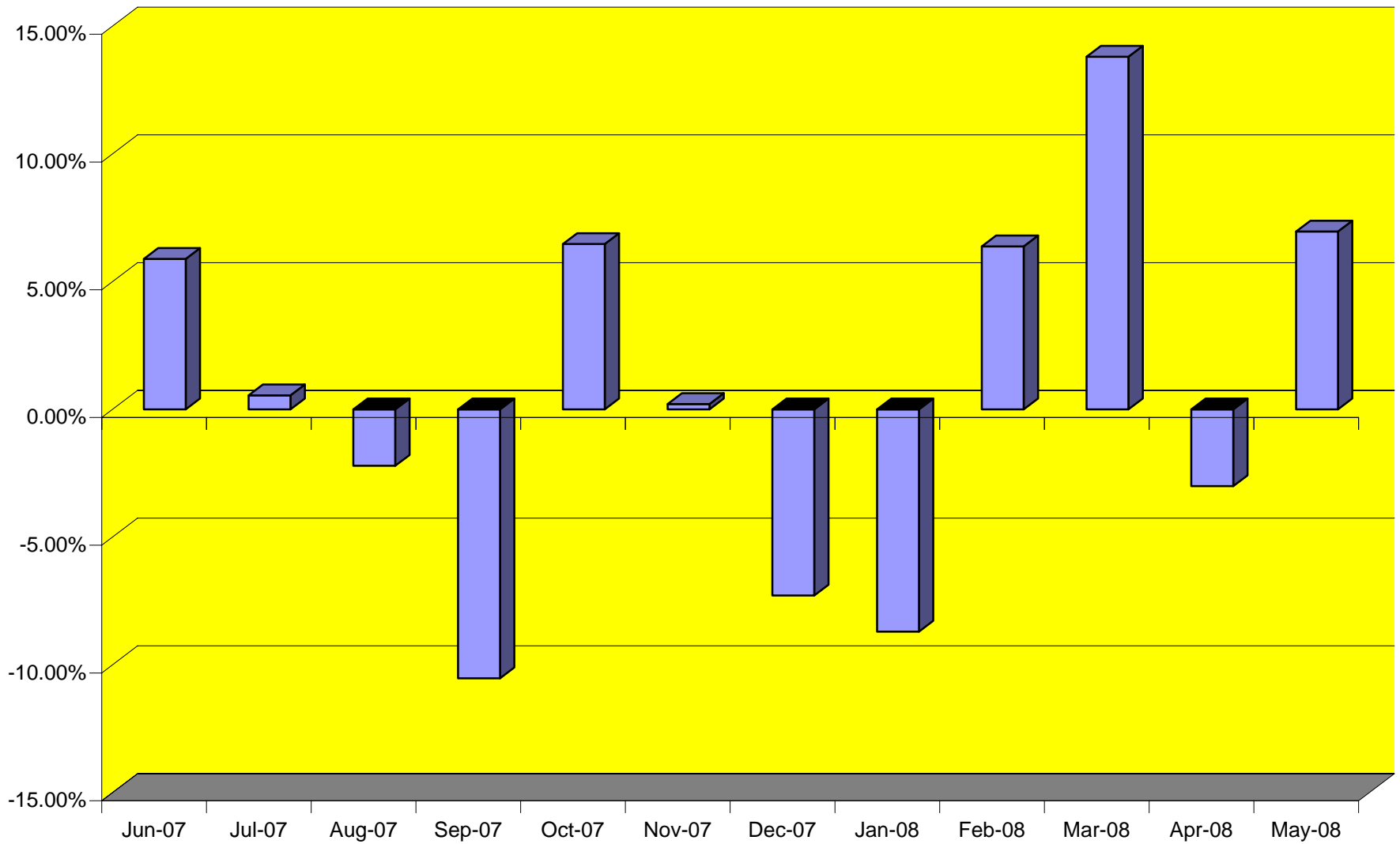
TOTAL CARGO POUNDAGE - AUSTIN, TEXAS



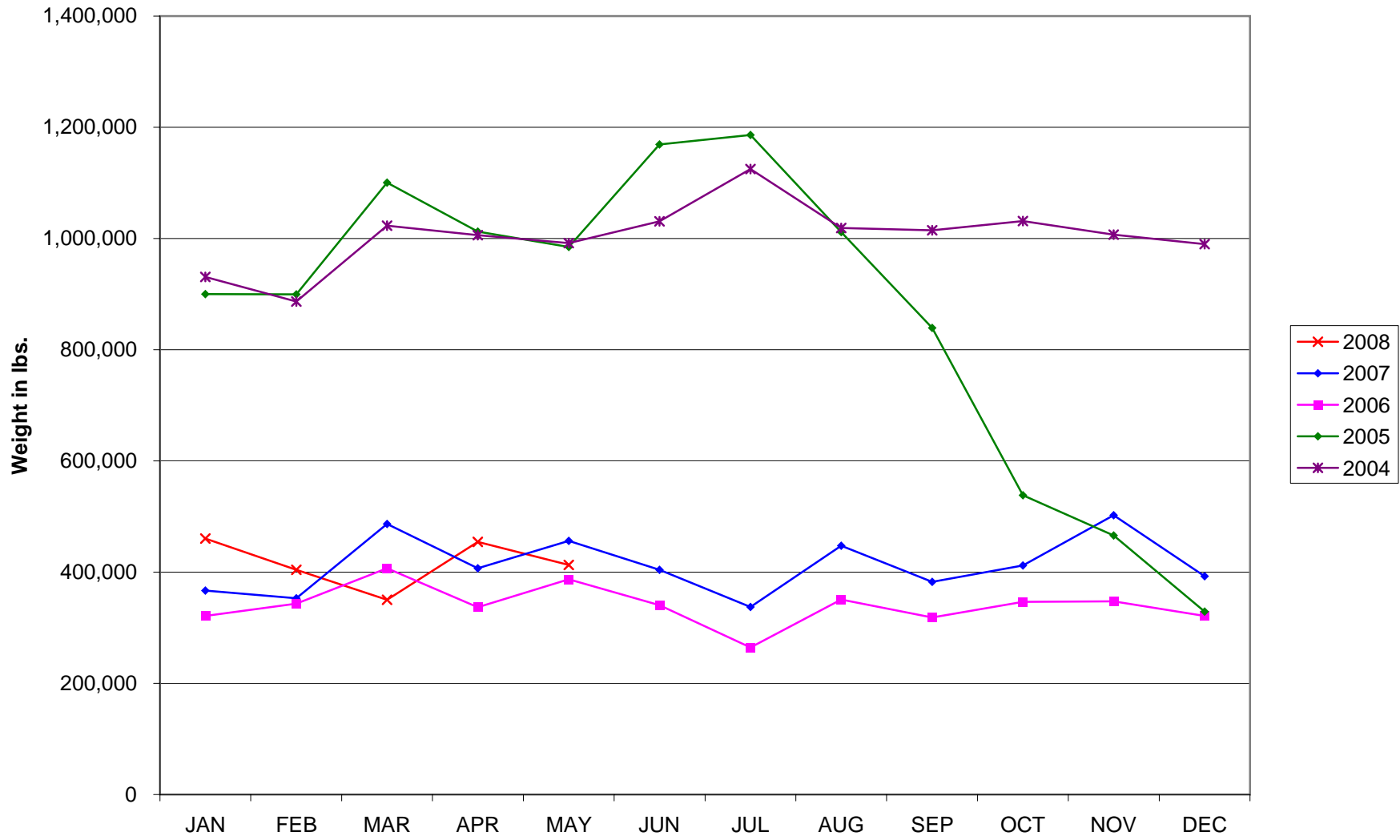
Average Daily Passengers



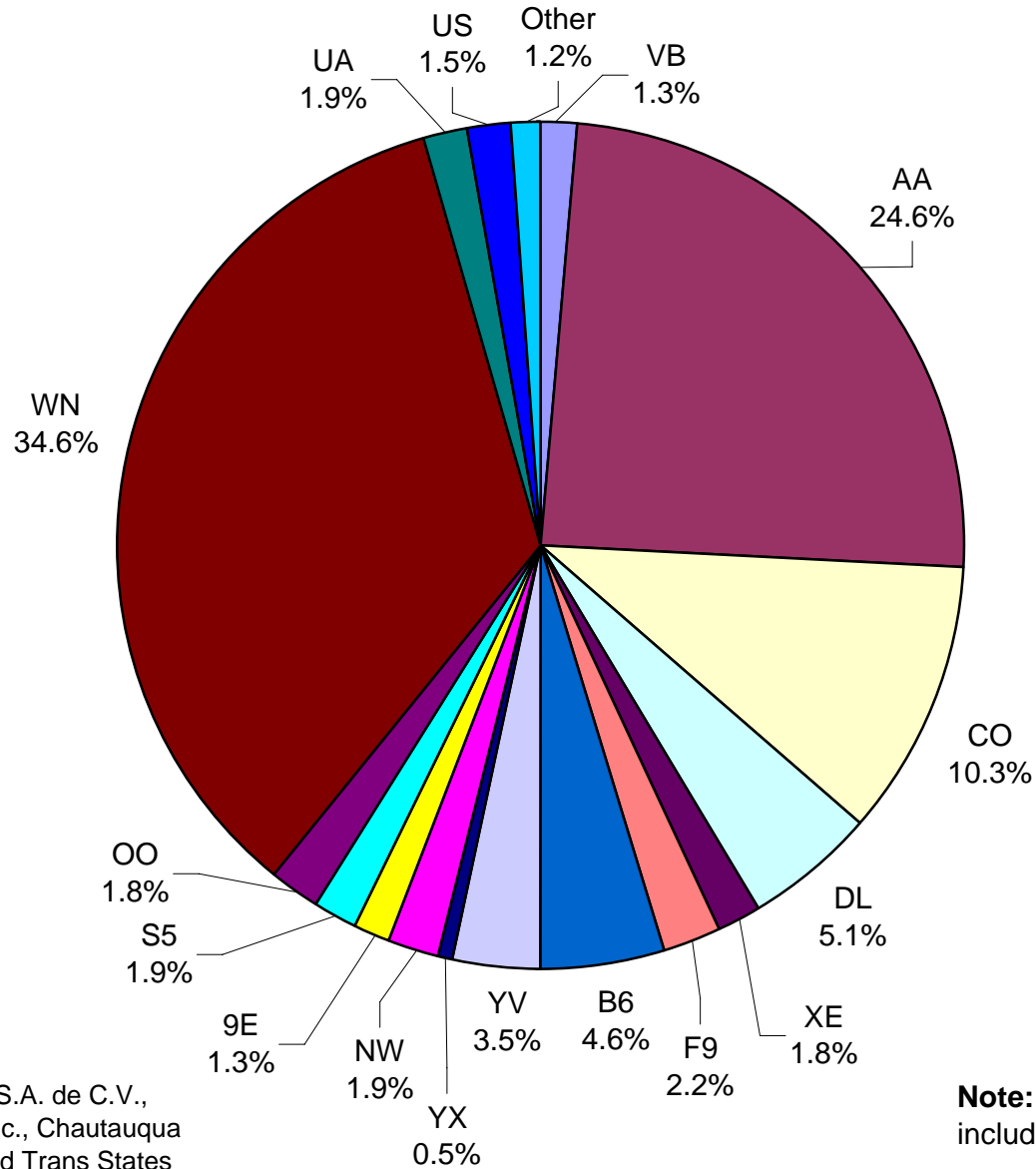
Monthly % Change in Average Daily Passengers



History of International Air Cargo



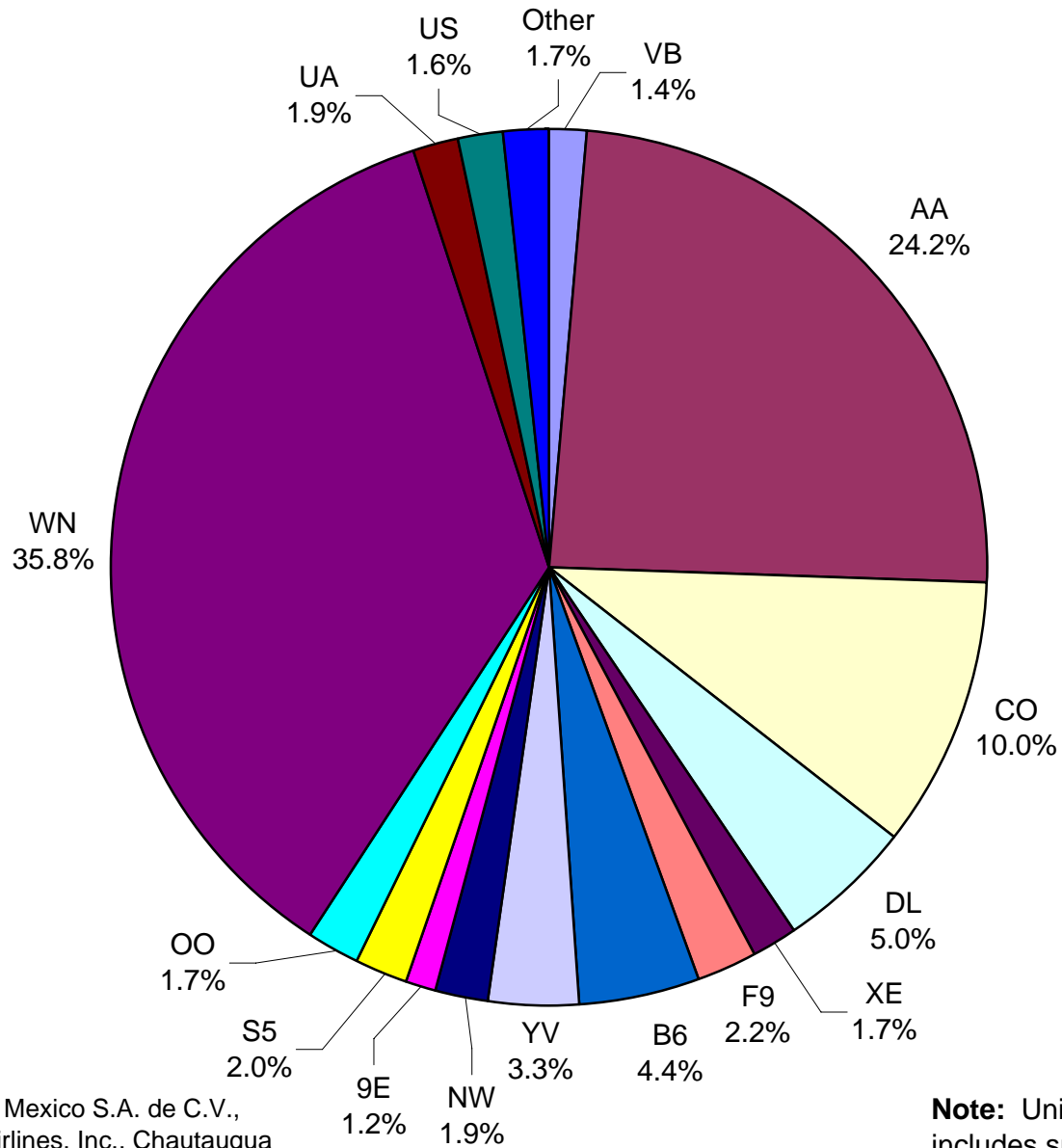
**All Carriers
Total Passengers
May 2008**



Other = Aero Mexico/Aerovias de Mexico S.A. de C.V., Allegiant Air, Atlantic Southeast Airlines, Inc., Chautauqua Airlines, Inc., Jazz Air LP, Pace Airlines and Trans States Airlines, Inc.

Note: United Airlines percentage includes sub-contractors.

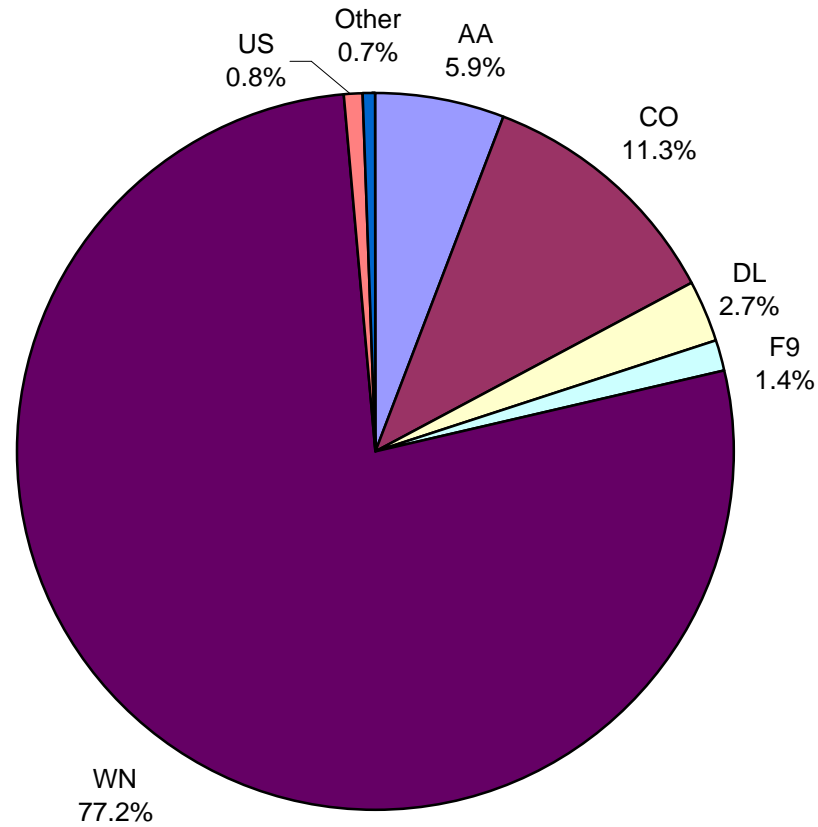
**All Passenger Carriers
Enplaned Revenue Passengers
May 2008**



Other = Aero Mexico/Aerovias de Mexico S.A. de C.V., Allegiant Air, Atlantic Southeast Airlines, Inc., Chautauqua Airlines, Inc., Jazz Air LP, Midwest Airlines, Inc., Pace Airlines, and Trans States Airlines, Inc.

Note: United Airlines percentage includes sub-contractors.

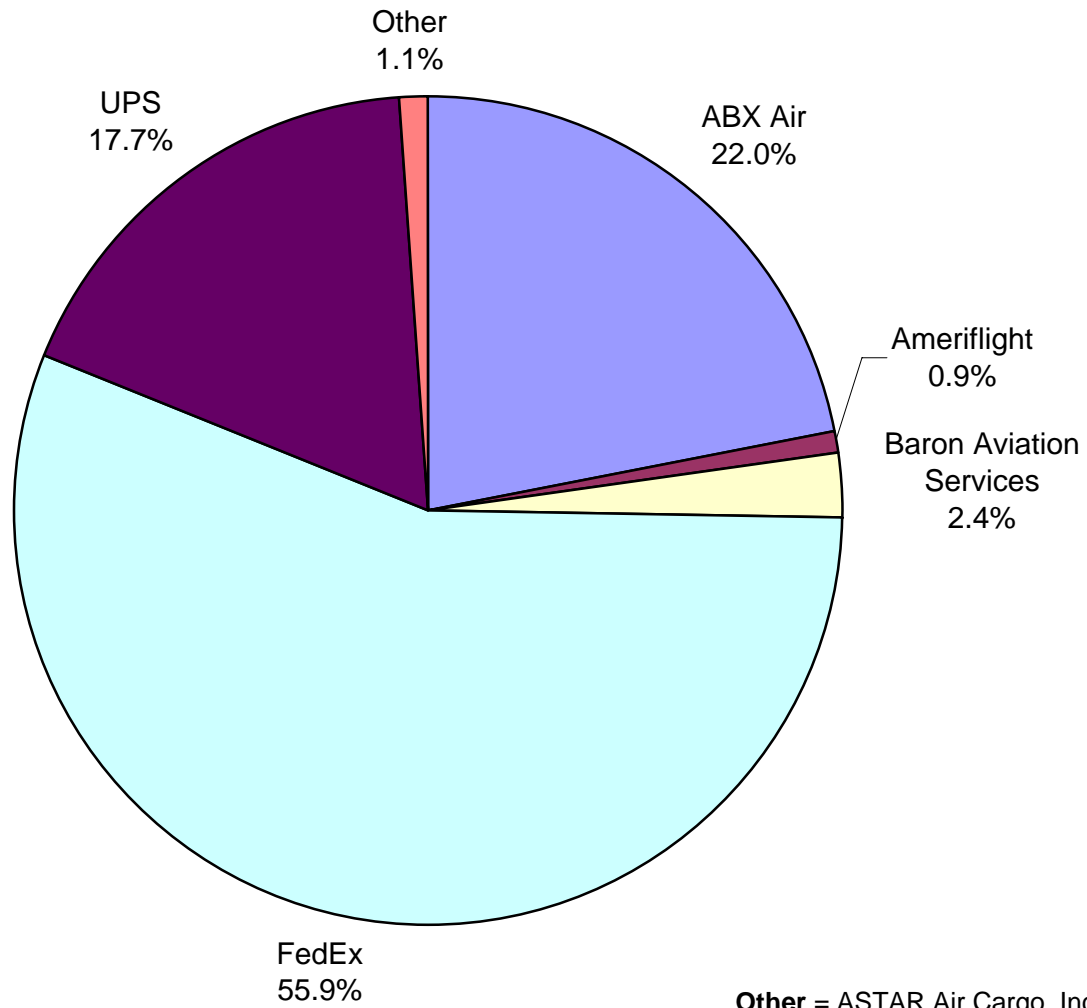
AUS Belly Freight Market Shares May 2008



Other = Atlantic Southeast Airlines, Inc., Mesa Airlines, Inc., Northwest Airlines, Pinnacle Airlines, Inc./dba Northwest Airlin, and United Airlines, Inc.

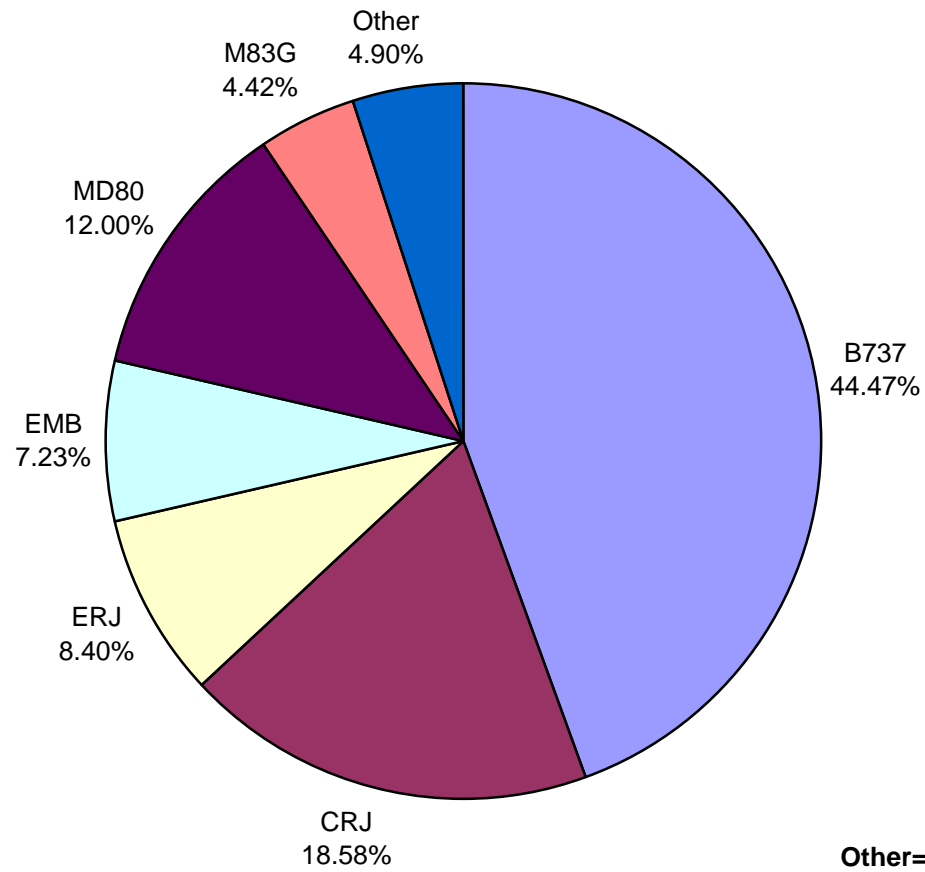
Note: United Airlines percentage includes sub-contractors.

**Air Cargo Market Shares
May 2008**



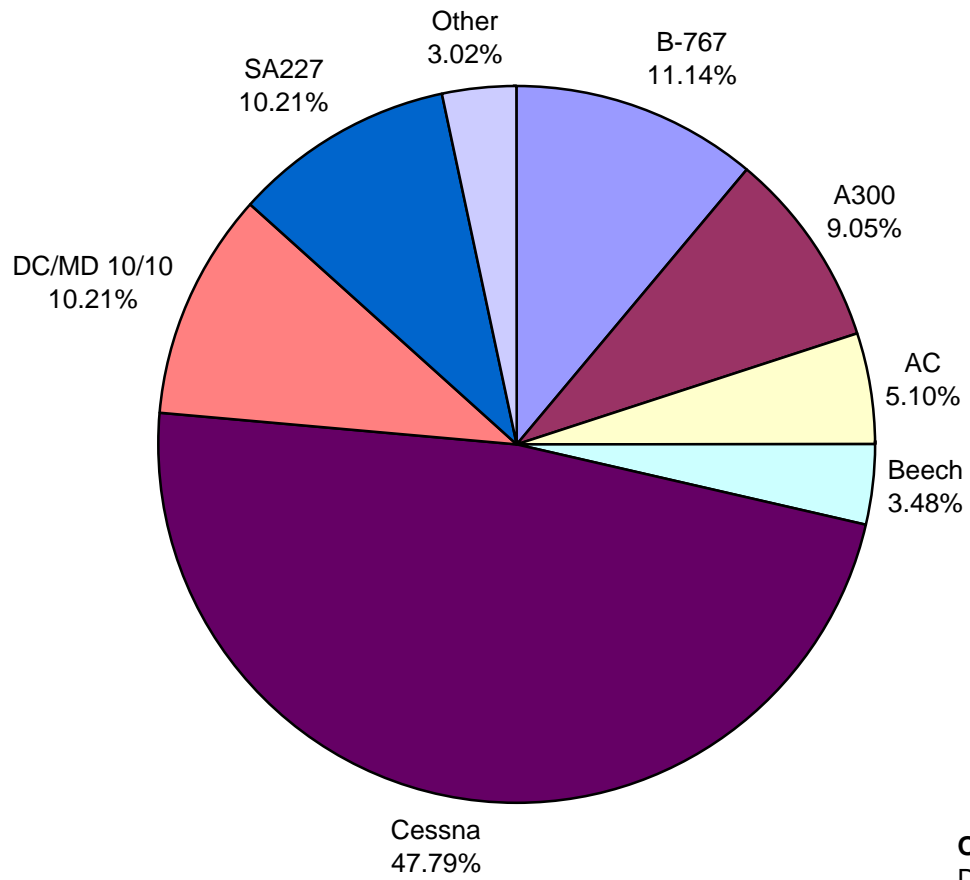
Other = ASTAR Air Cargo, Inc, BeavEX South Central LLC/Telesis Express, Lone Star Overnight L.P., Martinaire Partners L.P.

**AUS Scheduled Passenger Aircraft Fleet Mix
May 2008**



Other= A318, A319, A320, DC-9
and MD88

**AUS Scheduled Cargo Aircraft Fleet Mix
May 2008**



Austin-Bergstrom International Airport

PAX Detail Report - May, 2008

Company	05/2008	05/2007	Period		YTD 2008	YTD 2007	YTD		2008 Share	2007 Share	Share Diff
			Difference	Change			Difference	Change			
Aero Mexico Airlines/Aerovias de Mexico, S.A. de C.V.	1,423	1,752	-329	-18.8	7,874	7,532	342	4.5	0.2	0.2	0.0
Aeroenlaces Nacionales S.A. DE C.V./vivaAerobus	11,020	0	11,020	0.0	11,020	0	11,020	0.0	0.3	0.0	0.3
Allegiant Air	257	275	-18	-6.5	1,402	324	1,078	332.7	0.0	0.0	0.0
American Airlines, Inc	203,081	213,757	-10,676	-5.0	940,464	927,562	12,902	1.4	25.5	26.6	-1.1
Atlantic Southeast Airlines, Inc.	508	3,809	-3,301	-86.7	33,862	18,036	15,826	87.7	0.9	0.5	0.4
Casino Express Airways	0	0	0	0.0	1,048	297	751	252.9	0.0	0.0	0.0
Chautauqua Airlines Inc.	2,305	0	2,305	0.0	9,018	68	8,950	13,161.8	0.2	0.0	0.2
Continental Airlines	85,405	95,237	-9,832	-10.3	414,187	423,764	-9,577	-2.3	11.2	12.2	-0.9
Delta Airlines	42,547	36,319	6,228	17.1	172,721	172,226	495	0.3	4.7	4.9	-0.3
Express Jet Airlines, Inc.	14,481	12,064	2,417	20.0	82,319	14,877	67,442	453.3	2.2	0.4	1.8
Frontier Airlines DIP	18,568	0	18,568	100.0	29,607	0	29,607	100.0	0.8	0.0	0.8
Frontier Airlines, Inc. - Pre Bankruptcy	0	19,533	-19,533	-100.0	60,210	82,032	-21,822	-26.6	1.6	2.4	-0.7
Grand Holdings, Inc DBA Champion Air	0	0	0	0.0	0	412	-412	-100.0	0.0	0.0	0.0
JAZZ Air LP	2,686	0	2,686	0.0	2,686	0	2,686	0.0	0.1	0.0	0.1
JetBlue Airways Corporation	37,913	21,807	16,106	73.9	113,442	91,757	21,685	23.6	3.1	2.6	0.4
Mesa Airlines Inc.	28,511	21,471	7,040	32.8	95,509	98,891	-3,382	-3.4	2.6	2.8	-0.2
Miami Air International Inc.	0	0	0	0.0	342	334	8	2.4	0.0	0.0	0.0
Midwest Airlines, Inc.	4,283	0	4,283	0.0	18,959	0	18,959	0.0	0.5	0.0	0.5
MN Airlines, LLC d/b/a Sun Country	0	0	0	0.0	102	0	102	0.0	0.0	0.0	0.0
Northwest Airlines	15,608	9,950	5,658	56.9	63,193	55,568	7,625	13.7	1.7	1.6	0.1
Pace Airlines	40	0	40	0.0	40	0	40	0.0	0.0	0.0	0.0
Pinnacle Airlines, Inc. dba Northwest Airlink	10,459	11,192	-733	-6.5	39,875	44,440	-4,565	-10.3	1.1	1.3	-0.2
Shuttle America Corporation	15,704	14,271	1,433	10.0	58,643	88,534	-29,891	-33.8	1.6	2.5	-0.9
SkyWest Airlines, Inc	14,872	22,232	-7,360	-33.1	71,602	77,849	-6,247	-8.0	1.9	2.2	-0.3
Southwest Airlines	286,125	270,068	16,057	5.9	1,296,350	1,209,594	86,756	7.2	35.2	34.7	0.5
Trans States Airlines, Inc	2,433	0	2,433	0.0	4,297	20,439	-16,142	-79.0	0.1	0.6	-0.5
United Airlines, Inc.	15,420	17,443	-2,023	-11.6	81,382	84,305	-2,923	-3.5	2.2	2.4	-0.2
US Airways Group, Inc.	12,543	10,675	1,868	17.5	72,352	65,963	6,389	9.7	2.0	1.9	0.1
USA Jet Airlines, Inc.	0	0	0	0.0	16	0	16	0.0	0.0	0.0	0.0
Report Totals	826,192	781,855	44,337	5.7%	3,682,522	3,484,804	197,718	5.7%			

Statistics Included in Report:

Domestic Passengers:

Enplaned Revenue, Deplaned Revenue, Through Revenue, Enplaned Non-Revenue, Deplaned Non-Revenue, Through Non-Revenue

International Passenger:

Enplaned Revenue, Deplaned Revenue, Through Revenue, Enplaned Non-Revenue, Deplaned Non-Revenue, Through Non-Revenue, South Terminal-Int'l Enplaned Revenue, South Terminal-Int'l Deplaned Revenue, South Terminal-Int'l Through Revenue, South Terminal-Int'l Enplaned Non-Revenue, South Terminal-Int'l Deplaned Non-Revenue, South Terminal-Int'l Through Non-Revenue

Austin-Bergstrom International Airport

Summary Landing Report

Landing Type: Total

Month	2008		2007		2006		% Change 2008 - 2007		% Change 2007 - 2006	
	Count	Weight	Count	Weight	Count	Weight	Count	Weight	Count	Weight
January	4,995	508,563,011	4,269	461,169,144	4,315	454,283,479	17.01%	10.28%	-1.07%	1.52%
February	4,707	477,510,902	4,084	433,092,352	4,039	431,045,336	15.25%	10.26%	1.11%	0.47%
March	5,057	511,086,453	4,693	498,304,509	4,753	489,791,305	7.76%	2.57%	-1.26%	1.74%
April	4,853	498,467,860	4,659	485,924,900	4,515	460,181,145	4.16%	2.58%	3.19%	5.59%
May	5,213	542,161,220	5,116	524,923,078	4,701	488,777,890	1.90%	3.28%	8.83%	7.40%
June			5,006	521,808,372	4,603	473,474,518			8.76%	10.21%
July			5,245	543,679,941	4,600	474,488,279			14.02%	14.58%
August			5,453	559,884,838	4,700	487,717,207			16.02%	14.80%
September			5,107	513,882,056	4,465	468,401,170			14.38%	9.71%
October			5,373	539,788,979	4,744	495,772,214			13.26%	8.88%
November			5,053	515,341,963	4,494	476,125,637			12.44%	8.24%
December			4,997	511,272,858	4,598	484,969,931			8.68%	5.42%
Totals for Selected Period	24,825	2,537,789,446	22,821	2,403,413,983	22,323	2,324,079,155	8.78%	5.59%	2.23%	3.41%
Yearly Totals	30,077	3,088,948,440	59,055	6,109,072,990	54,527	5,685,028,111			8.30%	7.46%