

Austin-Bergstrom International Airport

Aviation Activity Report

| | 06/2008 | 06/2007 | Percent Change | 01/2008 - 06/2008 | 01/2007 - 06/2007 | Percent Change |
|--|----------------|----------------|-------------------|----------------------|-------------------------------|-------------------|
| <u>Passenger Activity</u> | | | | | | |
| Domestic Enplaned Revenue | 412,252 | 378,871 | 8.81 | 2,154,127 | 2,033,770 | 5.92 |
| Domestic Deplaned Revenue | 397,056 | 373,361 | 6.35 | 2,141,580 | 2,026,364 | 5.69 |
| Domestic Through Revenue | 19,887 | 21,934 | -9.33 | 101,651 | 106,660 | -4.70 |
| International Enplaned Revenue | 1,381 | 1,821 | -24.16 | 6,481 | 5,571 | 16.33 |
| International Deplaned Revenue | 1,784 | 1,706 | 4.57 | 6,662 | 5,488 | 21.39 |
| International Through Revenue | 0 | 0 | 0.00 | 0 | 0 | 0.00 |
| Domestic Enplaned Non-Revenue | 12,036 | 11,259 | 6.90 | 59,011 | 54,371 | 8.53 |
| Domestic Deplaned Non-Revenue | 11,960 | 12,224 | -2.16 | 57,764 | 53,756 | 7.46 |
| Domestic Through Non-Revenue | 0 | 9 | -100.00 | 0 | 9 | -100.00 |
| International Enplaned Non-Revenue | 21 | 0 | 0.00 | 52 | 0 | 100.00 |
| International Deplaned Non-Revenue | 43 | 0 | 0.00 | 71 | 0 | 100.00 |
| International Through Non-Revenue | 0 | 0 | 0.00 | 0 | 0 | 0.00 |
| South Terminal-Intl Enplaned Revenue | 6,496 | 0 | 0.00 | 12,477 | 0 | 10.00 |
| South Terminal-Intl Deplaned Revenue | 6,392 | 0 | 0.00 | 11,954 | 0 | 100.00 |
| South Terminal-Intl Through Revenue | 0 | 0 | 0.00 | 0 | 0 | 0.00 |
| South Terminal-Intl Enplaned Non-Revenue | 0 | 0 | 0.00 | 0 | 0 | 0.00 |
| South Terminal-Intl Deplaned Non-Revenue | 0 | 0 | 0.00 | 0 | 0 | 0.00 |
| South Terminal-Intl Through Non-Revenue | 0 | 0 | 0.00 | 0 | 0 | 0.00 |
| Passenger Totals | 869,308 | 801,185 | 8.50 | 4,551,830 | 4,285,989 | 6.20 |
| CURRENT PASSENGER RECORD = | 869,308 | | | | RECORD SET = JUNE 2008 | |
| <u>Aircraft Operations</u> | | | | | | |
| Air Carrier | 9,498 | 8,739 | 8.69 | 53,433 | 49,360 | 8.25 |
| Commuter & Air Taxi | 2,565 | 2,753 | -6.83 | 16,449 | 13,365 | 23.08 |
| Military | 453 | 303 | 49.50 | 3,118 | 2,934 | 6.27 |
| General Aviation | | | | | | |
| Itinerant | 5,819 | 5,207 | 11.75 | 36,939 | 34,062 | 8.45 |
| Local | 214 | 364 | -41.21 | 1,460 | 2,061 | -29.16 |
| Total G.A. | 6,033 | 5,571 | 8.29 | 38,399 | 36,123 | 6.30 |
| Total Operations | 18,549 | 17,366 | 6.81 | 111,399 | 101,782 | 9.45 |

Austin-Bergstrom International Airport

Aviation Activity Report

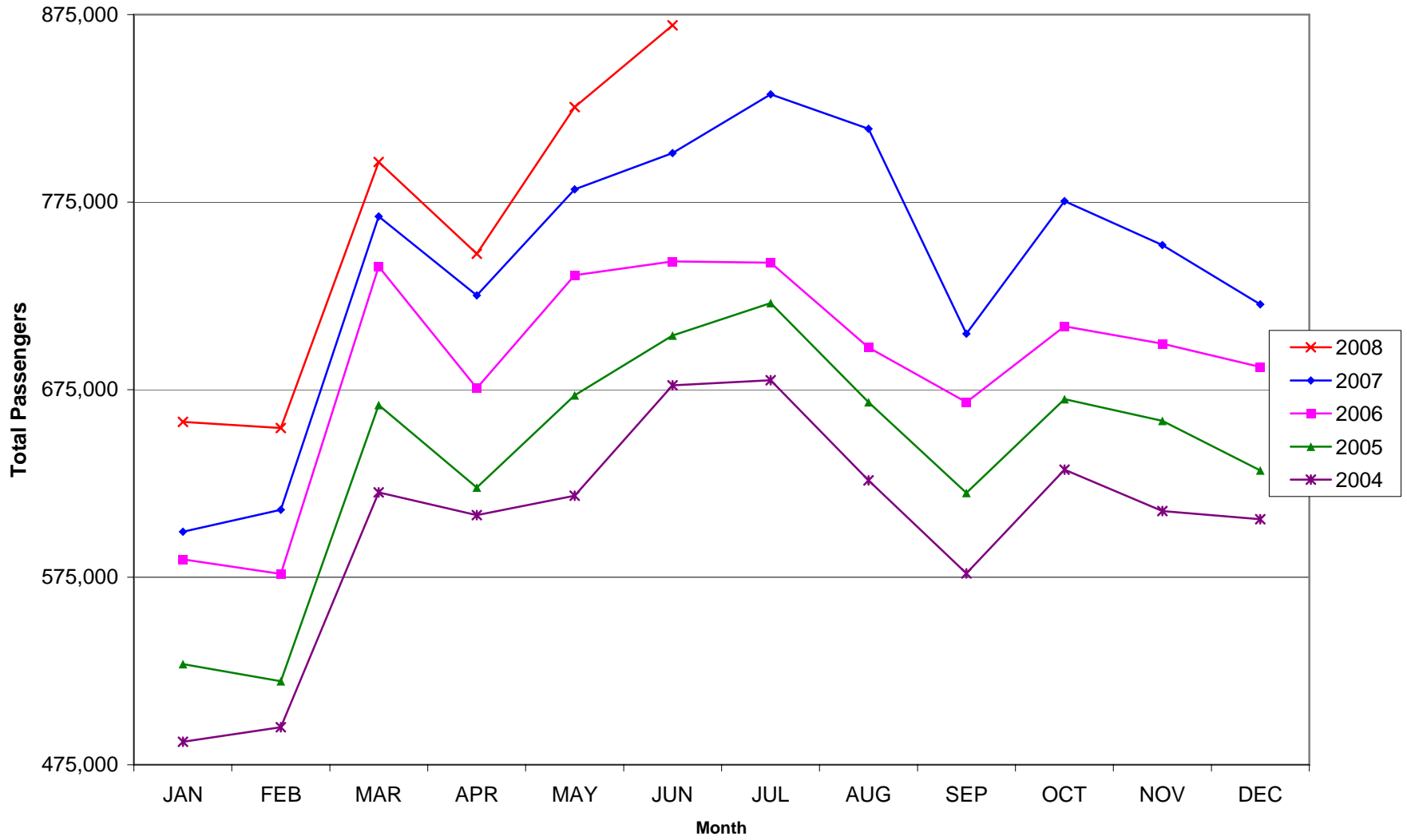
| | 06/2008 | 06/2007 | Percent Change | 01/2008 - 06/2008 | 01/2007 - 06/2007 | Percent Change |
|--|-------------------|-------------------|-------------------|----------------------|----------------------|--------------------------------|
| <u>Cargo Activity</u> | | | | | | |
| Mail | | | | | | |
| Domestic Enplaned Mail | 198,273 | 42,262 | 369.15 | 1,109,815 | 779,890 | 42.30 |
| Domestic Deplaned Mail | 443,925 | 64,089 | 592.67 | 2,076,414 | 1,628,695 | 27.49 |
| International Enplaned Mail | 0 | 0 | 0.00 | 0 | 15 | -100.00 |
| International Deplaned Mail | 0 | 0 | 0.00 | 0 | 15 | -100.00 |
| South Terminal-Intl Enplaned Mail | 0 | 0 | 0.00 | 0 | 0 | 0.00 |
| South Terminal-Intl Deplaned Mail | 0 | 0 | 0.00 | 0 | 0 | 0.00 |
| Mail Totals | 642,198 | 106,351 | 503.85 | 3,186,229 | 2,408,615 | 32.28 |
| Cargo | | | | | | |
| Domestic Enplaned Cargo | 7,686,989 | 8,597,808 | -10.59 | 49,351,210 | 44,631,789 | 10.57 |
| Domestic Deplaned Cargo | 5,837,962 | 7,114,983 | -17.95 | 39,697,958 | 39,362,229 | 0.85 |
| International Enplaned Cargo | 389,727 | 404,284 | -3.60 | 2,471,585 | 2,473,448 | -0.08 |
| International Deplaned Cargo | 0 | 0 | 0.00 | 0 | 0 | 0.00 |
| South Terminal-Intl Enplaned Cargo | 0 | 0 | 0.00 | 0 | 0 | 0.00 |
| South Terminal-Intl Deplaned Cargo | 0 | 0 | 0.00 | 0 | 0 | 0.00 |
| Cargo Totals | 13,914,678 | 16,117,075 | -13.66 | 91,520,753 | 86,467,466 | 5.84 |
| Belly Freight | | | | | | |
| Domestic Enplaned Belly Freight | 1,024,748 | 1,367,661 | -25.07 | 6,001,590 | 7,463,971 | -19.59 |
| Domestic Deplaned Belly Freight | 789,045 | 742,022 | 6.34 | 4,802,484 | 4,464,697 | 7.57 |
| International Enplaned Belly Freight | 0 | 0 | 0.00 | 0 | 0 | 0.00 |
| International Deplaned Belly Freight | 0 | 0 | 0.00 | 0 | 0 | 0.00 |
| South Terminal-Intl Enplaned Belly Frt | 0 | 0 | 0.00 | 0 | 0 | 0.00 |
| South Terminal-Intl Deplaned Belly Frt | 0 | 0 | 0.00 | 0 | 0 | 0.00 |
| Belly Freight Totals | 1,813,793 | 2,109,683 | -14.03 | 10,804,074 | 11,928,668 | -9.43 |
| Cargo Totals (Mail, Cargo, Belly Freight) | 16,370,669 | 18,333,109 | -10.70 | 105,511,056 | 100,804,749 | 4.67 |
| CURRENT CARGO RECORD = | 40,215,518 | | | | | RECORD SET = MARCH 2001 |

AUS – Airline Codes

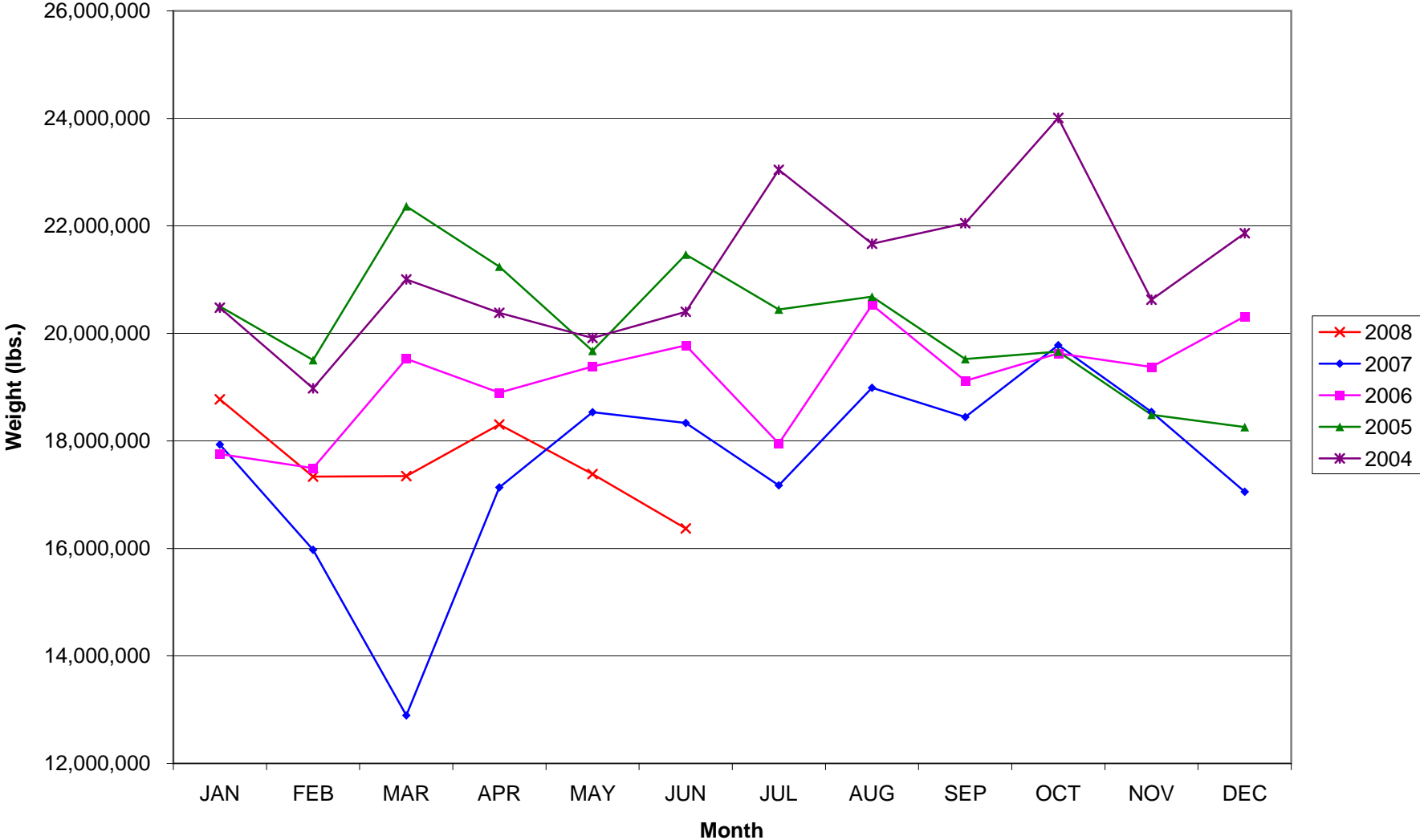
June 2008

| <u>Code</u> | <u>Carrier</u> |
|--------------------|--|
| AM | Aero Mexico/Aerovias de Mexico S.A. de C.V. |
| VB | Aeroenlaces Nacionales S.A. de C.V./vivaAerobus |
| G4 | Allegiant Air |
| AA | American Airlines, Inc. |
| EV | Atlantic Southeast Airlines, Inc. (Delta Connection) |
| XP | Casino Express Airways |
| RP | Chautauqua Airlines, Inc. |
| CO | Continental Airlines |
| DL | Delta Airlines |
| XE | Express Jet Airlines, Inc. |
| F9 | Frontier Airlines DIP |
| QK | Jazz Air LP |
| B6 | JetBlue Airways Corp. |
| YV | Mesa Airlines, Inc. |
| YX | Midwest Airlines, Inc. |
| NW | Northwest Airlines |
| 9E | Pinnacle Airlines, Inc./dba Northwest Airlinck |
| S5 | Shuttle America Corp. (Delta Connection) |
| OO | SkyWest Airlines, Inc. |
| WN | Southwest Airlines |
| AX | Trans States Airlines, Inc. |
| UA | United Airlines, Inc. |
| US | US Airways Group, Inc. |

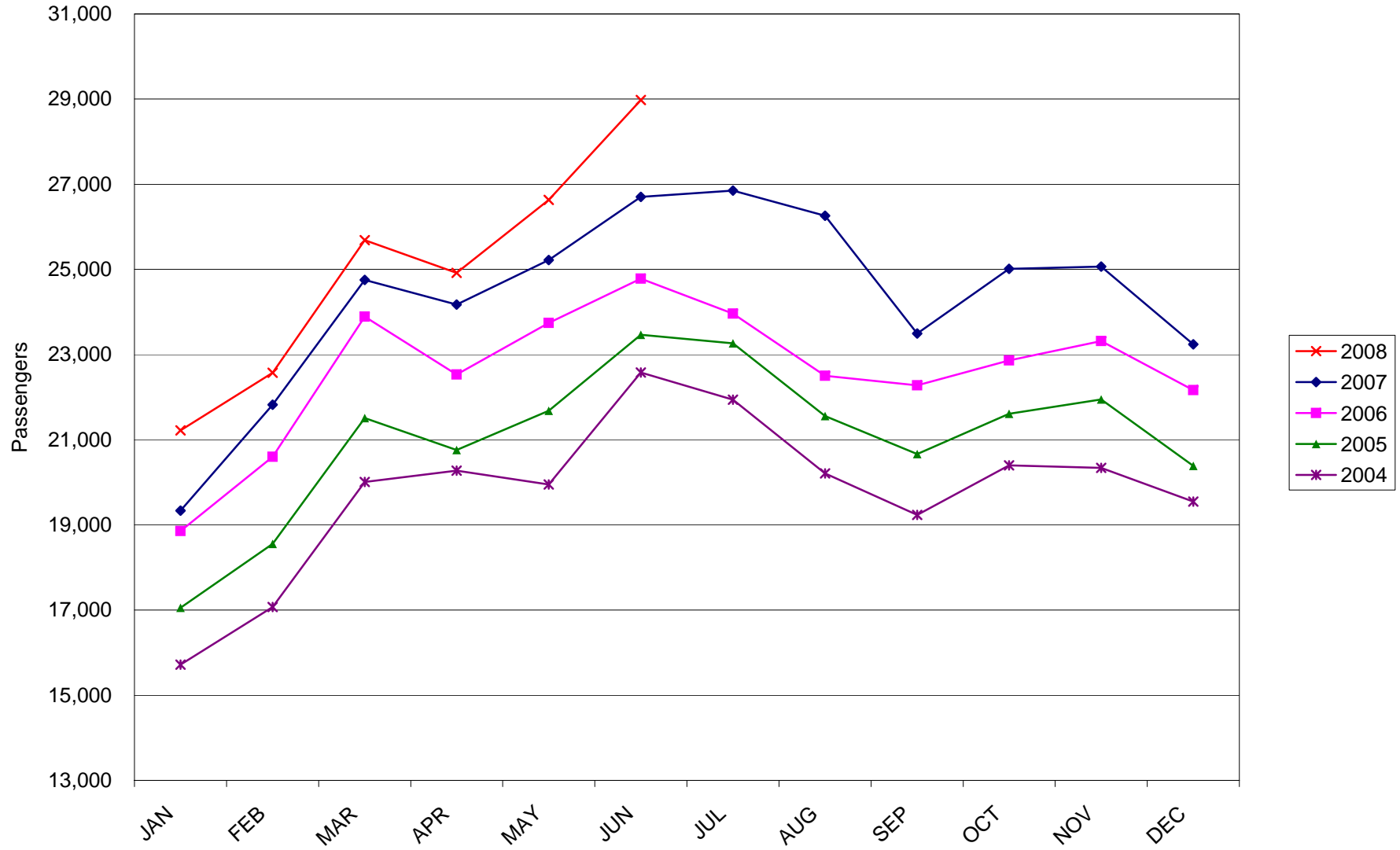
AUSTIN PASSENGER TRAFFIC



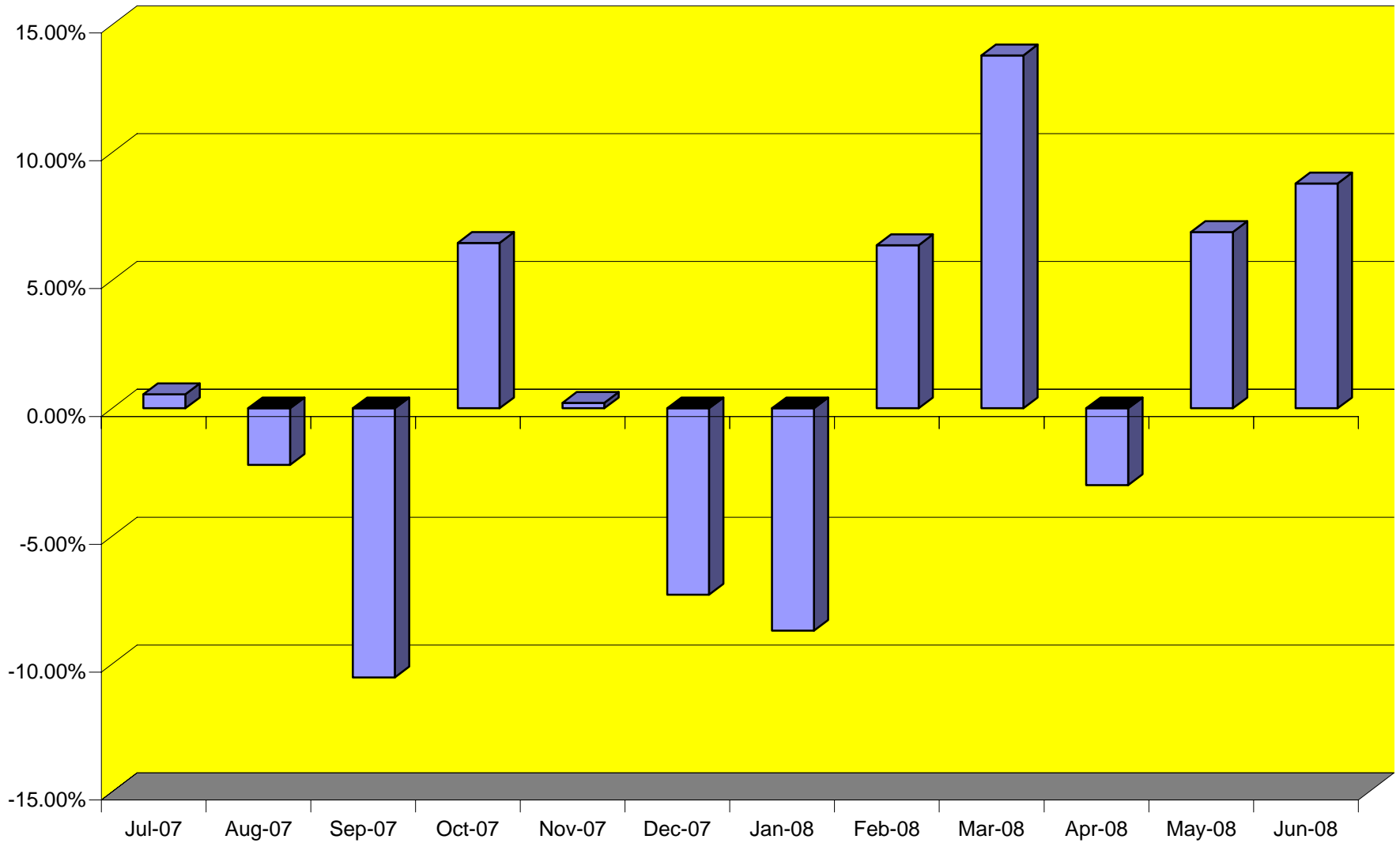
TOTAL CARGO POUNDAGE - AUSTIN, TEXAS



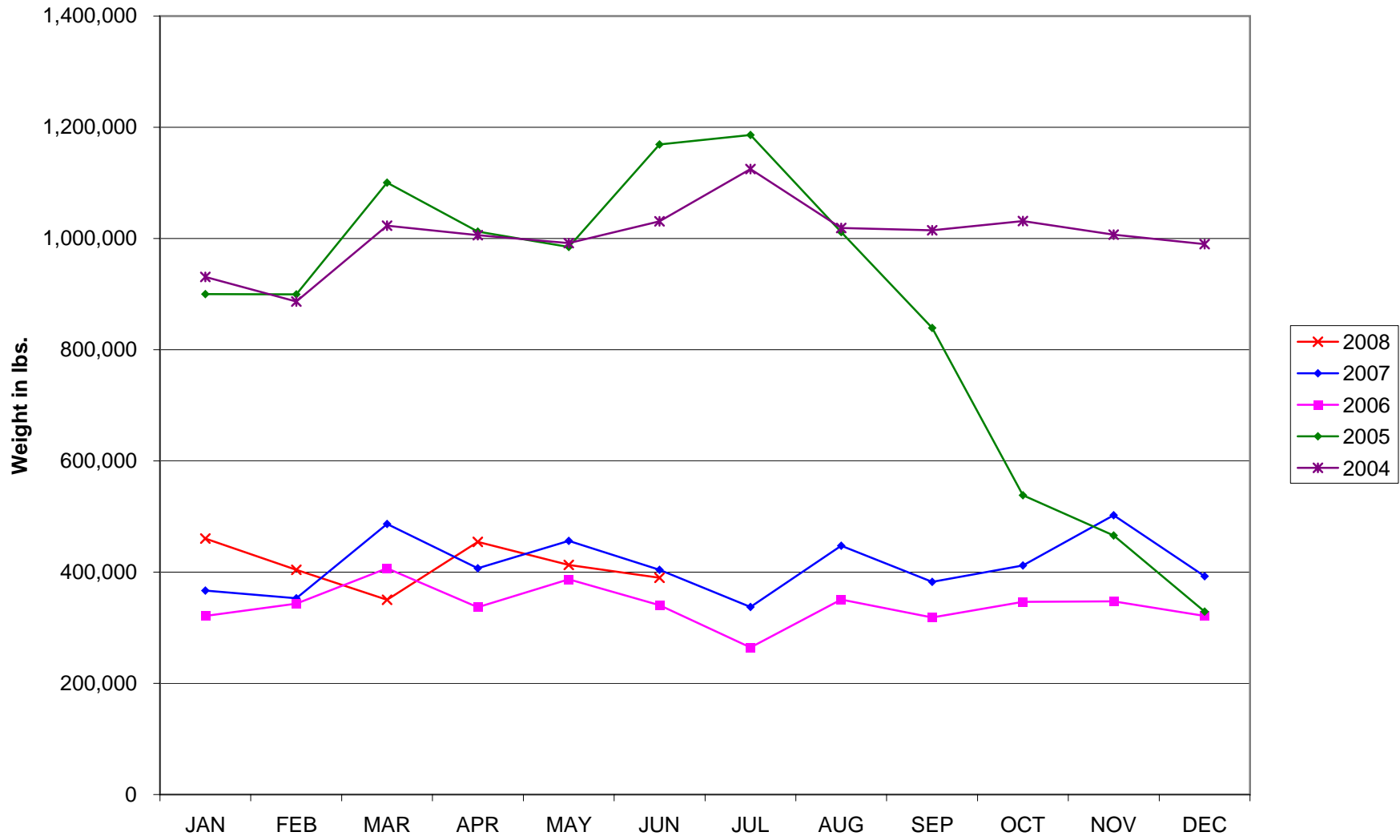
Average Daily Passengers



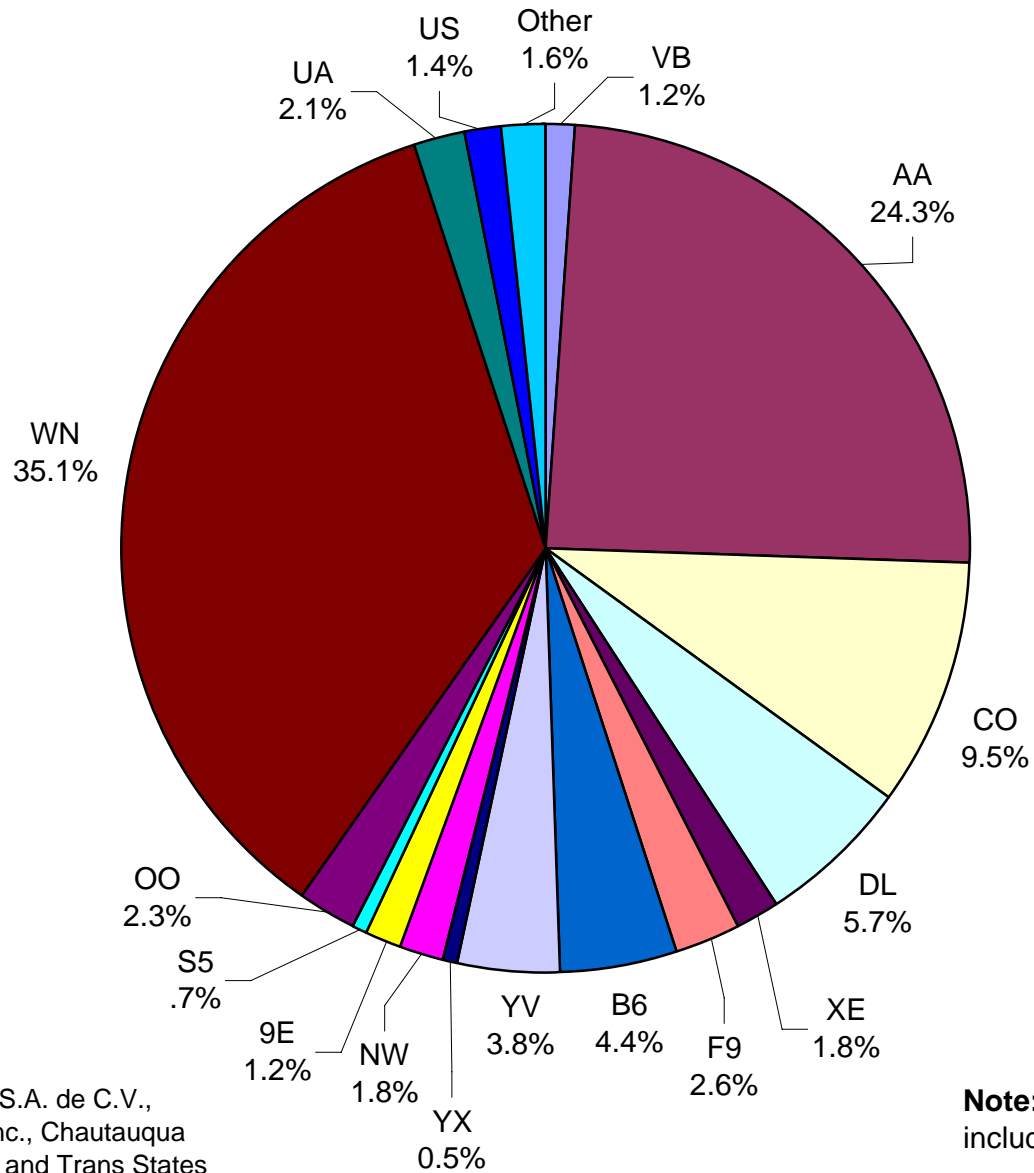
Monthly % Change in Average Daily Passengers



History of International Air Cargo



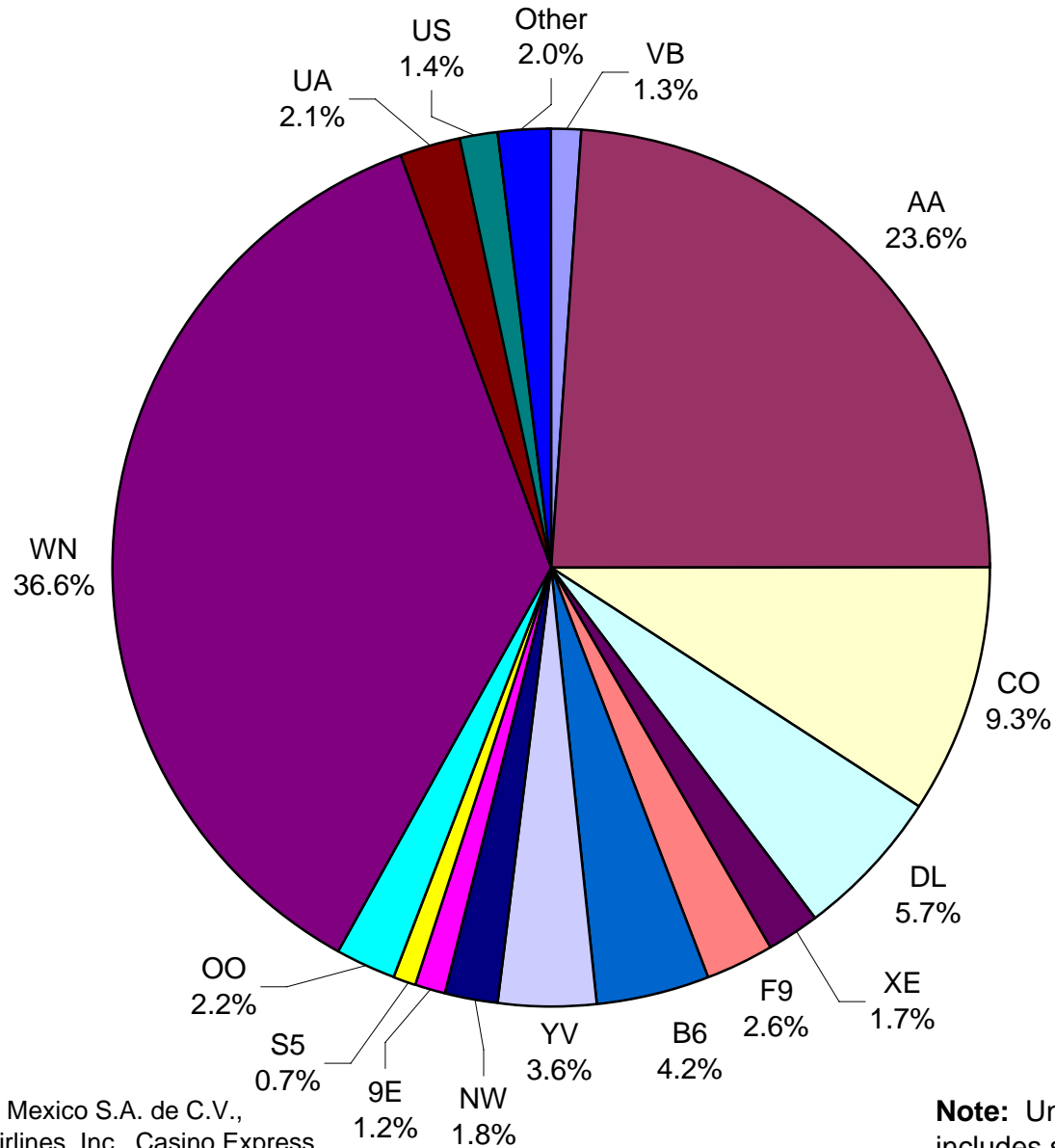
**All Carriers
Total Passengers
June 2008**



Other = Aero Mexico/Aerovias de Mexico S.A. de C.V., Allegiant Air, Atlantic Southeast Airlines, Inc., Chautauqua Airlines, Inc., Jazz Air LP, Casino Express and Trans States Airlines, Inc.

Note: United Airlines percentage includes sub-contractors.

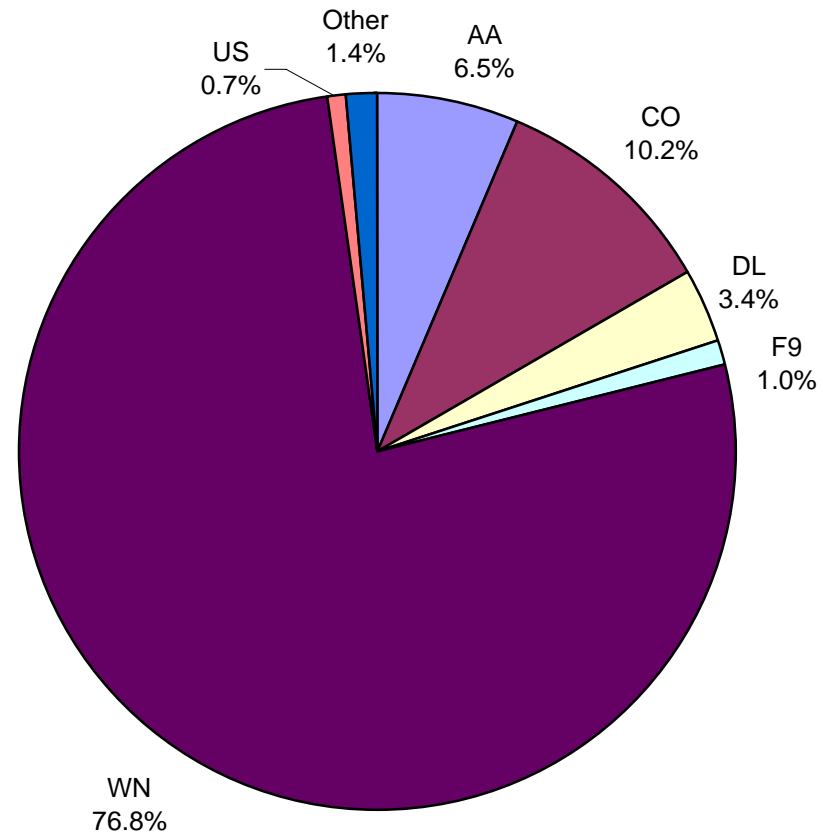
**All Passenger Carriers
Enplaned Revenue Passengers
June 2008**



Other = Aero Mexico/Aerovias de Mexico S.A. de C.V., Allegiant Air, Atlantic Southeast Airlines, Inc., Casino Express, Chautauqua Airlines, Inc., Jazz Air LP, Midwest Airlines, Inc., and Trans States Airlines, Inc.

Note: United Airlines percentage includes sub-contractors.

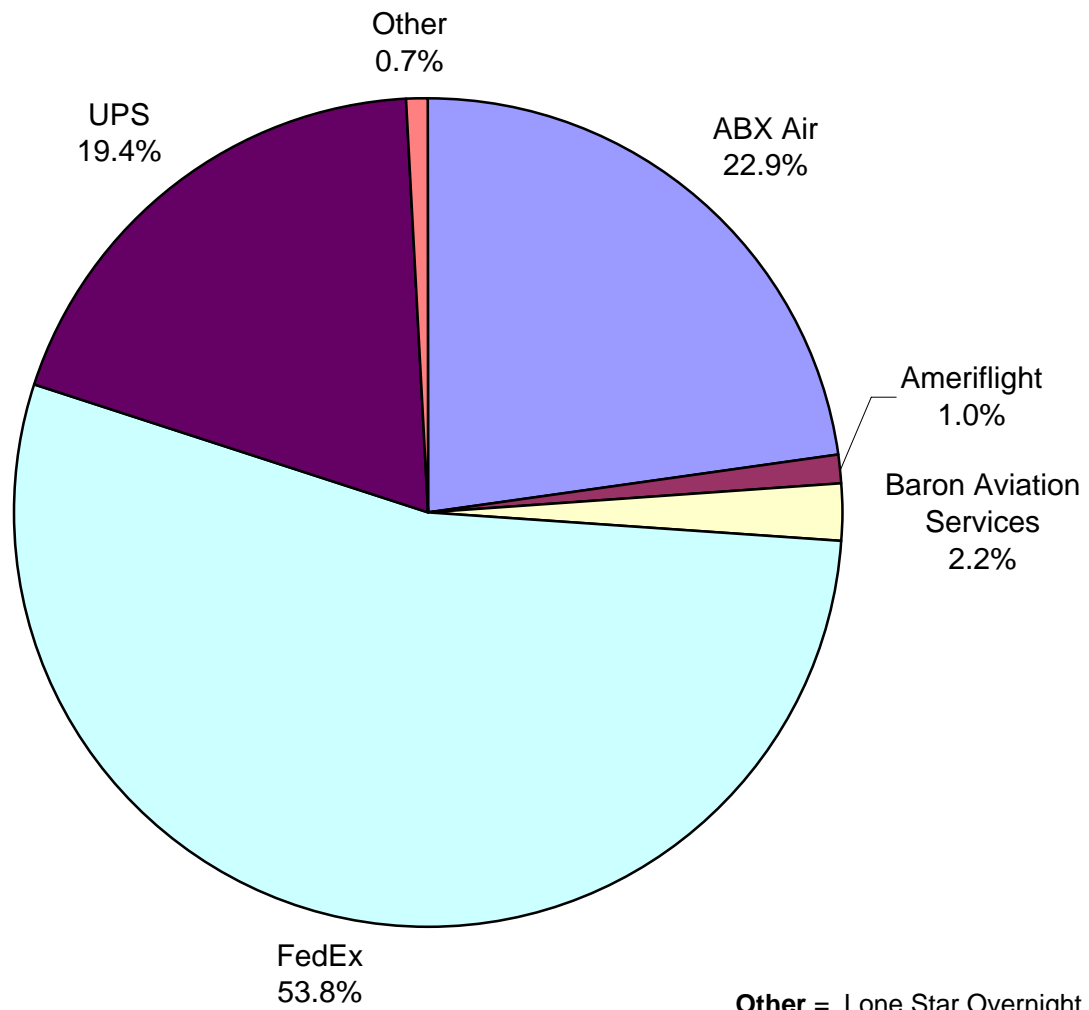
**AUS Belly Freight Market Shares
June 2008**



Other = Atlantic Southeast Airlines, Inc., Mesa Airlines, Inc., Northwest Airlines, Pinnacle Airlines, Inc./dba Northwest AirlinK, and United Airlines, Inc.

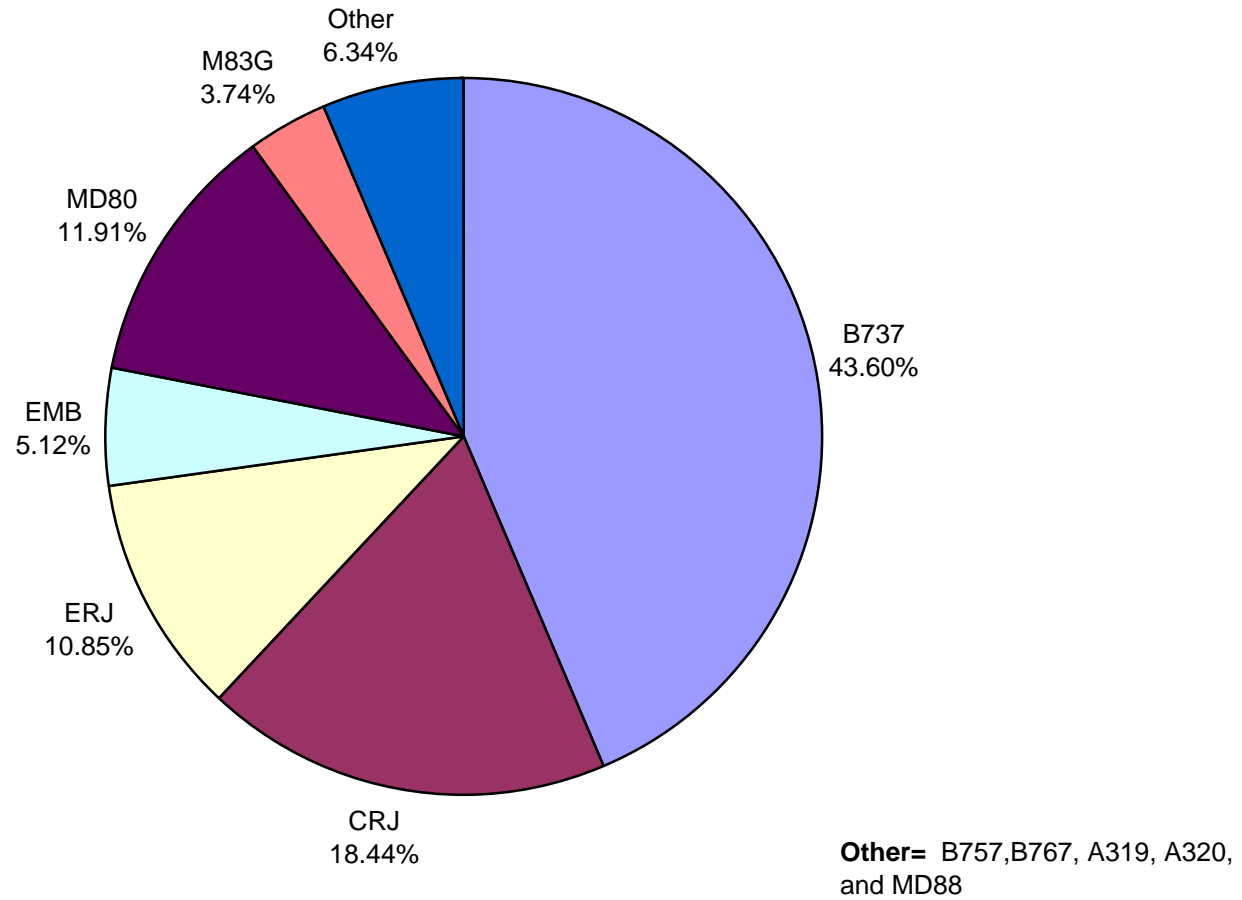
Note: United Airlines percentage includes sub-contractors.

**Air Cargo Market Shares
June 2008**

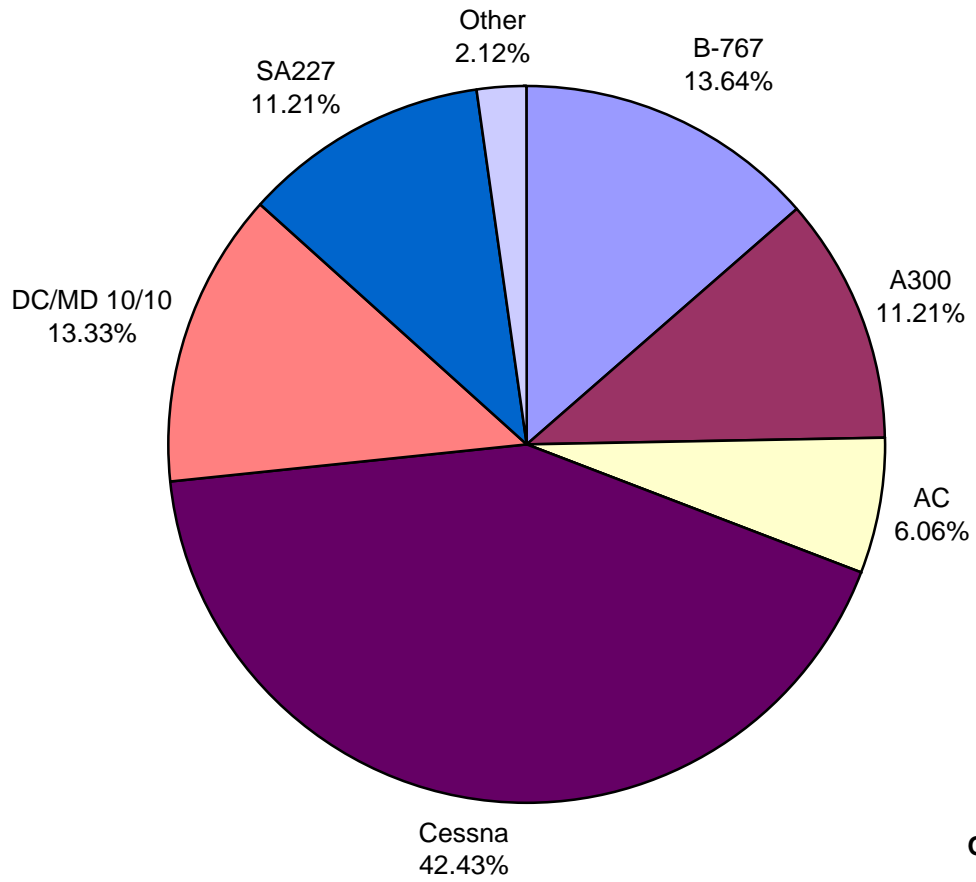


Other = Lone Star Overnight L.P., Martinaire Partners L.P.

**AUS Scheduled Passenger Aircraft Fleet Mix
June 2008**



**AUS Scheduled Cargo Aircraft Fleet Mix
June 2008**



Austin-Bergstrom International Airport

PAX Detail Report - June, 2008

| Company | 06/2008 | 06/2007 | Period | | YTD 2008 | YTD 2007 | YTD | | 2008 Share | 2007 Share | Share Diff |
|---|----------------|----------------|---------------|-------------|------------------|------------------|----------------|-------------|---------------|---------------|---------------|
| | | | Difference | Change | | | Difference | Change | | | |
| Aero Mexico Airlines/Aerovias de Mexico, S.A. de C.V. | 2,407 | 3,527 | -1,120 | -31.8 | 10,281 | 11,059 | -778 | -7.0 | 0.2 | 0.3 | 0.0 |
| Aeroenlaces Nacionales S.A. DE C.V./vivaAerobus | 10,837 | 0 | 10,837 | 0.0 | 21,857 | 0 | 21,857 | 0.0 | 0.5 | 0.0 | 0.5 |
| Allegiant Air | 124 | 284 | -160 | -56.3 | 1,526 | 608 | 918 | 151.0 | 0.0 | 0.0 | 0.0 |
| American Airlines, Inc | 211,062 | 218,700 | -7,638 | -3.5 | 1,151,526 | 1,146,262 | 5,264 | 0.5 | 25.3 | 26.7 | -1.4 |
| Atlantic Southeast Airlines, Inc. | 3,385 | 3,789 | -404 | -10.7 | 37,247 | 21,825 | 15,422 | 70.7 | 0.8 | 0.5 | 0.3 |
| Casino Express Airways | 299 | 297 | 2 | 0.7 | 1,347 | 594 | 753 | 126.8 | 0.0 | 0.0 | 0.0 |
| Chautauqua Airlines Inc. | 2,319 | 0 | 2,319 | 0.0 | 11,337 | 68 | 11,269 | 16,572.1 | 0.2 | 0.0 | 0.2 |
| Continental Airlines | 82,916 | 87,259 | -4,343 | -5.0 | 497,103 | 511,023 | -13,920 | -2.7 | 10.9 | 11.9 | -1.0 |
| Delta Airlines | 49,324 | 45,954 | 3,370 | 7.3 | 222,045 | 218,180 | 3,865 | 1.8 | 4.9 | 5.1 | -0.2 |
| Express Jet Airlines, Inc. | 15,348 | 19,470 | -4,122 | -21.2 | 97,667 | 34,347 | 63,320 | 184.4 | 2.1 | 0.8 | 1.3 |
| Frontier Airlines DIP | 22,474 | 0 | 22,474 | 100.0 | 52,081 | 0 | 52,081 | 100.0 | 1.1 | 0.0 | 1.1 |
| Frontier Airlines, Inc. - Pre Bankruptcy | 0 | 20,452 | -20,452 | -100.0 | 60,210 | 102,484 | -42,274 | -41.2 | 1.3 | 2.4 | -1.1 |
| Grand Holdings, Inc DBA Champion Air | 0 | 0 | 0 | 0.0 | 0 | 412 | -412 | -100.0 | 0.0 | 0.0 | 0.0 |
| JAZZ Air LP | 2,873 | 0 | 2,873 | 0.0 | 5,559 | 0 | 5,559 | 0.0 | 0.1 | 0.0 | 0.1 |
| JetBlue Airways Corporation | 38,272 | 22,670 | 15,602 | 68.8 | 151,714 | 114,427 | 37,287 | 32.6 | 3.3 | 2.7 | 0.7 |
| Mesa Airlines Inc. | 33,336 | 24,428 | 8,908 | 36.5 | 128,845 | 123,319 | 5,526 | 4.5 | 2.8 | 2.9 | 0.0 |
| Miami Air International Inc. | 0 | 0 | 0 | 0.0 | 342 | 334 | 8 | 2.4 | 0.0 | 0.0 | 0.0 |
| Midwest Airlines, Inc. | 4,060 | 0 | 4,060 | 0.0 | 23,019 | 0 | 23,019 | 0.0 | 0.5 | 0.0 | 0.5 |
| MN Airlines, LLC d/b/a Sun Country | 0 | 0 | 0 | 0.0 | 102 | 0 | 102 | 0.0 | 0.0 | 0.0 | 0.0 |
| Northwest Airlines | 15,604 | 9,445 | 6,159 | 65.2 | 78,797 | 65,013 | 13,784 | 21.2 | 1.7 | 1.5 | 0.2 |
| Pace Airlines | 0 | 0 | 0 | 0.0 | 40 | 0 | 40 | 0.0 | 0.0 | 0.0 | 0.0 |
| Pinnacle Airlines, Inc. dba Northwest Airlink | 10,660 | 10,556 | 104 | 1.0 | 50,535 | 54,996 | -4,461 | -8.1 | 1.1 | 1.3 | -0.2 |
| Shuttle America Corporation | 5,619 | 19,553 | -13,934 | -71.3 | 64,262 | 108,087 | -43,825 | -40.5 | 1.4 | 2.5 | -1.1 |
| SkyWest Airlines, Inc | 20,304 | 13,901 | 6,403 | 46.1 | 91,906 | 91,750 | 156 | 0.2 | 2.0 | 2.1 | -0.1 |
| Southwest Airlines | 305,118 | 272,276 | 32,842 | 12.1 | 1,601,468 | 1,481,870 | 119,598 | 8.1 | 35.2 | 34.6 | 0.6 |
| Trans States Airlines, Inc | 2,529 | 0 | 2,529 | 0.0 | 6,826 | 20,439 | -13,613 | -66.6 | 0.1 | 0.5 | -0.3 |
| United Airlines, Inc. | 18,282 | 17,674 | 608 | 3.4 | 99,664 | 101,979 | -2,315 | -2.3 | 2.2 | 2.4 | -0.2 |
| US Airways Group, Inc. | 12,156 | 10,950 | 1,206 | 11.0 | 84,508 | 76,913 | 7,595 | 9.9 | 1.9 | 1.8 | 0.1 |
| USA Jet Airlines, Inc. | 0 | 0 | 0 | 0.0 | 16 | 0 | 16 | 0.0 | 0.0 | 0.0 | 0.0 |
| Report Totals | 869,308 | 801,185 | 68,123 | 8.5% | 4,551,830 | 4,285,989 | 265,841 | 6.2% | | | |

Statistics Included in Report:

Domestic Passengers:

Enplaned Revenue, Deplaned Revenue, Through Revenue, Enplaned Non-Revenue, Deplaned Non-Revenue, Through Non-Revenue

International Passenger:

Enplaned Revenue, Deplaned Revenue, Through Revenue, Enplaned Non-Revenue, Deplaned Non-Revenue, Through Non-Revenue, South Terminal-Int'l Enplaned Revenue, South Terminal-Int'l Deplaned Revenue, South Terminal-Int'l Through Revenue, South Terminal-Int'l Enplaned Non-Revenue, South Terminal-Int'l Deplaned Non-Revenue, South Terminal-Int'l Through Non-Revenue

Austin-Bergstrom International Airport

Summary Landing Report

Landing Type: Total

| Month | 2008 | | 2007 | | 2006 | | % Change 2008 - 2007 | | % Change 2007 - 2006 | |
|-----------------------------------|--------|---------------|--------|---------------|--------|---------------|----------------------|--------|----------------------|--------|
| | Count | Weight | Count | Weight | Count | Weight | Count | Weight | Count | Weight |
| January | 4,994 | 508,546,911 | 4,268 | 461,157,264 | 4,314 | 454,270,179 | 17.01% | 10.28% | -1.07% | 1.52% |
| February | 4,707 | 477,510,902 | 4,081 | 432,333,052 | 4,039 | 431,045,336 | 15.34% | 10.45% | 1.04% | 0.30% |
| March | 5,057 | 511,086,453 | 4,693 | 498,304,509 | 4,750 | 489,668,305 | 7.76% | 2.57% | -1.20% | 1.76% |
| April | 4,853 | 498,467,860 | 4,657 | 485,905,500 | 4,513 | 460,099,145 | 4.21% | 2.59% | 3.19% | 5.61% |
| May | 5,210 | 541,804,220 | 5,116 | 524,923,078 | 4,697 | 488,433,026 | 1.84% | 3.22% | 8.92% | 7.47% |
| June | 5,252 | 551,158,994 | 5,005 | 521,795,072 | 4,602 | 473,433,518 | 4.94% | 5.63% | 8.76% | 10.22% |
| July | | | 5,243 | 543,571,241 | 4,597 | 474,383,579 | | | 14.05% | 14.58% |
| August | | | 5,452 | 559,875,138 | 4,699 | 487,707,507 | | | 16.02% | 14.80% |
| September | | | 5,105 | 513,849,856 | 4,463 | 468,374,570 | | | 14.38% | 9.71% |
| October | | | 5,373 | 539,788,979 | 4,743 | 495,762,514 | | | 13.28% | 8.88% |
| November | | | 5,052 | 515,328,663 | 4,487 | 476,027,737 | | | 12.59% | 8.26% |
| December | | | 4,997 | 511,272,858 | 4,596 | 484,901,631 | | | 8.72% | 5.44% |
| Totals for Selected Period | 30,073 | 3,088,575,340 | 27,820 | 2,924,418,475 | 26,915 | 2,796,949,509 | 8.10% | 5.61% | 3.36% | 4.56% |
| Yearly Totals | 30,073 | 3,088,575,340 | 59,042 | 6,108,105,210 | 54,500 | 5,684,107,047 | | | 8.33% | 7.46% |