

Austin-Bergstrom International Airport

Aviation Activity Report

| | 07/2008 | 07/2007 | Percent Change | 01/2008 - 07/2008 | 01/2007 - 07/2007 | Percent Change |
|--|----------------|----------------|----------------|-------------------|-------------------|----------------|
| <u>Passenger Activity</u> | | | | | | |
| Domestic Enplaned Revenue | 404,884 | 383,891 | 5.47 | 2,559,011 | 2,417,661 | 5.85 |
| Domestic Deplaned Revenue | 393,377 | 387,420 | 1.54 | 2,534,957 | 2,413,784 | 5.02 |
| Domestic Through Revenue | 18,198 | 24,598 | -26.02 | 119,849 | 131,258 | -8.69 |
| International Enplaned Revenue | 1,075 | 2,341 | -54.08 | 7,556 | 7,912 | -4.50 |
| International Deplaned Revenue | 1,091 | 2,490 | -56.18 | 7,753 | 7,978 | -2.82 |
| International Through Revenue | 0 | 0 | 0.00 | 0 | 0 | 0.00 |
| Domestic Enplaned Non-Revenue | 12,548 | 19,427 | -35.41 | 71,559 | 73,798 | -3.03 |
| Domestic Deplaned Non-Revenue | 11,882 | 12,288 | -3.30 | 69,646 | 66,044 | 5.45 |
| Domestic Through Non-Revenue | 0 | 0 | 0.00 | 0 | 9 | -100.00 |
| International Enplaned Non-Revenue | 44 | 0 | 100.00 | 96 | 0 | 100.00 |
| International Deplaned Non-Revenue | 40 | 0 | 100.00 | 111 | 0 | 100.00 |
| International Through Non-Revenue | 0 | 0 | 0.00 | 0 | 0 | 0.00 |
| South Terminal-Intl Enplaned Revenue | 6,198 | 0 | 100.00 | 18,675 | 0 | 100.00 |
| South Terminal-Intl Deplaned Revenue | 6,270 | 0 | 100.00 | 18,224 | 0 | 100.00 |
| South Terminal-Intl Through Revenue | 0 | 0 | 0.00 | 0 | 0 | 0.00 |
| South Terminal-Intl Enplaned Non-Revenue | 0 | 0 | 0.00 | 0 | 0 | 0.00 |
| South Terminal-Intl Deplaned Non-Revenue | 0 | 0 | 0.00 | 0 | 0 | 0.00 |
| South Terminal-Intl Through Non-Revenue | 0 | 0 | 0.00 | 0 | 0 | 0.00 |
| Passenger Totals | 855,607 | 832,455 | 2.78 | 5,407,437 | 5,118,444 | 5.65 |

CURRENT PASSENGER RECORD = 869,308

RECORD SET = JUNE 2008

Aircraft Operations

| | | | | | | |
|-------------------------|---------------|---------------|-------------|----------------|----------------|-------------|
| Air Carrier | 9,620 | 9,189 | 4.69 | 63,053 | 58,549 | 7.69 |
| Commuter & Air Taxi | 2,177 | 2,806 | -22.42 | 18,626 | 16,171 | 15.18 |
| Military | 169 | 383 | -55.87 | 3,287 | 3,317 | -0.90 |
| General Aviation | | | | | | |
| Itinerant | 5,433 | 4,478 | 21.33 | 42,372 | 38,540 | 9.94 |
| Local | 179 | 358 | -50.00 | 1,639 | 2,419 | -32.24 |
| Total G.A. | 5,612 | 4,836 | 16.05 | 44,011 | 40,959 | 7.45 |
| Total Operations | 17,578 | 17,214 | 2.11 | 128,977 | 118,996 | 8.39 |

Austin-Bergstrom International Airport

Aviation Activity Report

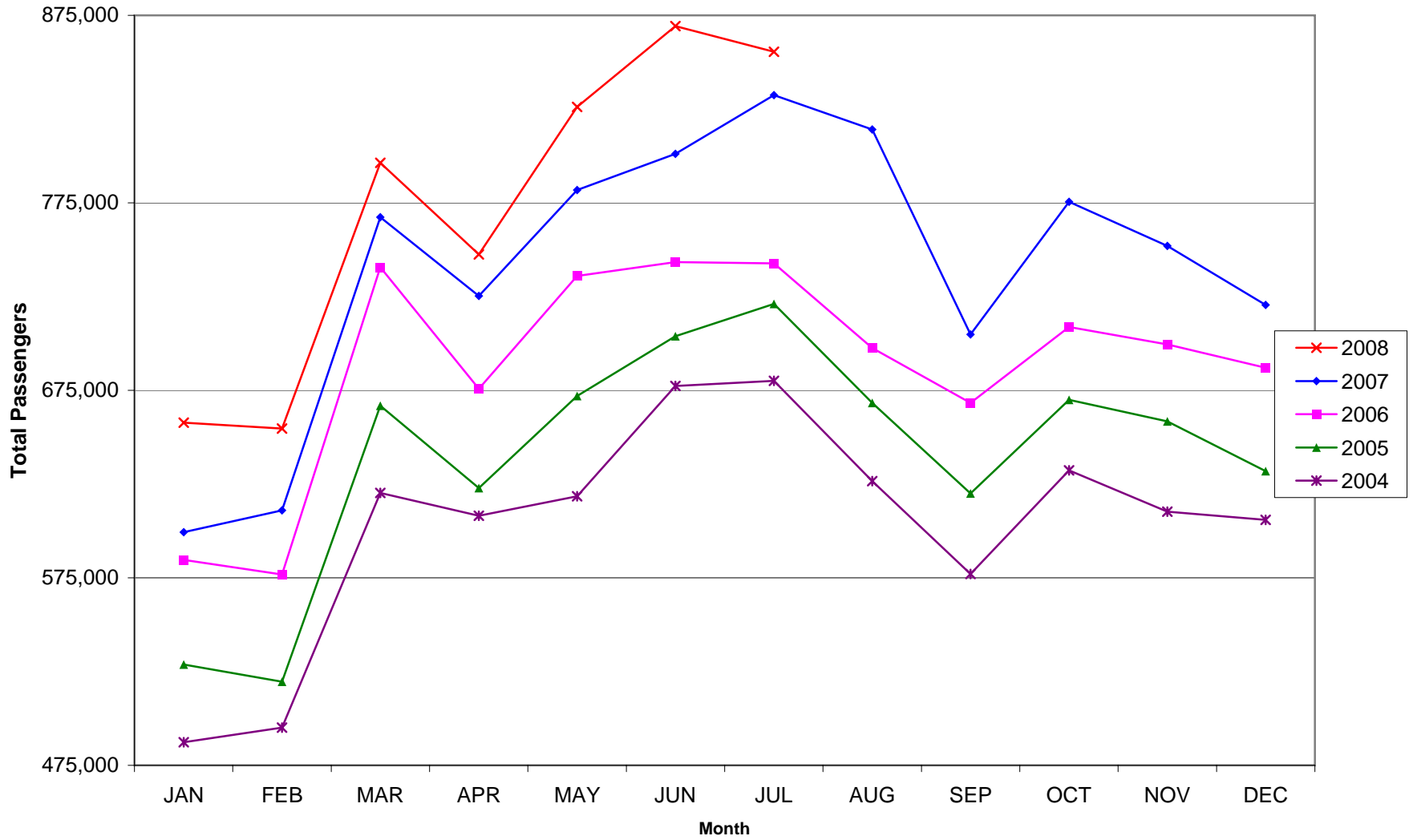
| | 07/2008 | 07/2007 | Percent Change | 01/2008 - 07/2008 | 01/2007 - 07/2007 | Percent Change |
|--|-------------------|-------------------|-------------------|----------------------|--------------------------------|-------------------|
| <u>Cargo Activity</u> | | | | | | |
| Mail | | | | | | |
| Domestic Enplaned Mail | 221,930 | 82,448 | 169.18 | 1,331,745 | 862,338 | 54.43 |
| Domestic Deplaned Mail | 456,992 | 94,061 | 385.85 | 2,533,406 | 1,722,756 | 47.06 |
| International Enplaned Mail | 0 | 0 | 0.00 | 0 | 15 | -100.00 |
| International Deplaned Mail | 0 | 0 | 0.00 | 0 | 15 | -100.00 |
| South Terminal-Intl Enplaned Mail | 0 | 0 | 0.00 | 0 | 0 | 0.00 |
| South Terminal-Intl Deplaned Mail | 0 | 0 | 0.00 | 0 | 0 | 0.00 |
| Mail Totals | 678,922 | 176,509 | 284.64 | 3,865,151 | 2,585,124 | 49.52 |
| Cargo | | | | | | |
| Domestic Enplaned Cargo | 7,799,596 | 7,790,041 | 0.12 | 57,150,806 | 52,421,830 | 9.02 |
| Domestic Deplaned Cargo | 5,967,143 | 6,929,268 | -13.88 | 45,665,101 | 46,291,497 | -1.35 |
| International Enplaned Cargo | 382,544 | 337,345 | 13.40 | 2,854,129 | 2,810,793 | 1.54 |
| International Deplaned Cargo | 0 | 0 | 0.00 | 0 | 0 | 0.00 |
| South Terminal-Intl Enplaned Cargo | 0 | 0 | 0.00 | 0 | 0 | 0.00 |
| South Terminal-Intl Deplaned Cargo | 0 | 0 | 0.00 | 0 | 0 | 0.00 |
| Cargo Totals | 14,149,283 | 15,056,654 | -6.03 | 105,670,036 | 101,524,120 | 4.08 |
| Belly Freight | | | | | | |
| Domestic Enplaned Belly Freight | 1,012,110 | 1,262,689 | -19.84 | 7,013,700 | 8,726,660 | -19.63 |
| Domestic Deplaned Belly Freight | 794,794 | 676,122 | 17.55 | 5,597,278 | 5,140,819 | 8.88 |
| International Enplaned Belly Freight | 0 | 0 | 0.00 | 0 | 0 | 0.00 |
| International Deplaned Belly Freight | 0 | 0 | 0.00 | 0 | 0 | 0.00 |
| South Terminal-Intl Enplaned Belly Frt | 0 | 0 | 0.00 | 0 | 0 | 0.00 |
| South Terminal-Intl Deplaned Belly Frt | 0 | 0 | 0.00 | 0 | 0 | 0.00 |
| Belly Freight Totals | 1,806,904 | 1,938,811 | -6.80 | 12,610,978 | 13,867,479 | -9.06 |
| Cargo Totals (Mail, Cargo, Belly Freight) | 16,635,109 | 17,171,974 | -3.13 | 122,146,165 | 117,976,723 | 3.53 |
| CURRENT CARGO RECORD = | 40,215,518 | | | | RECORD SET = MARCH 2001 | |

AUS – Airline Codes

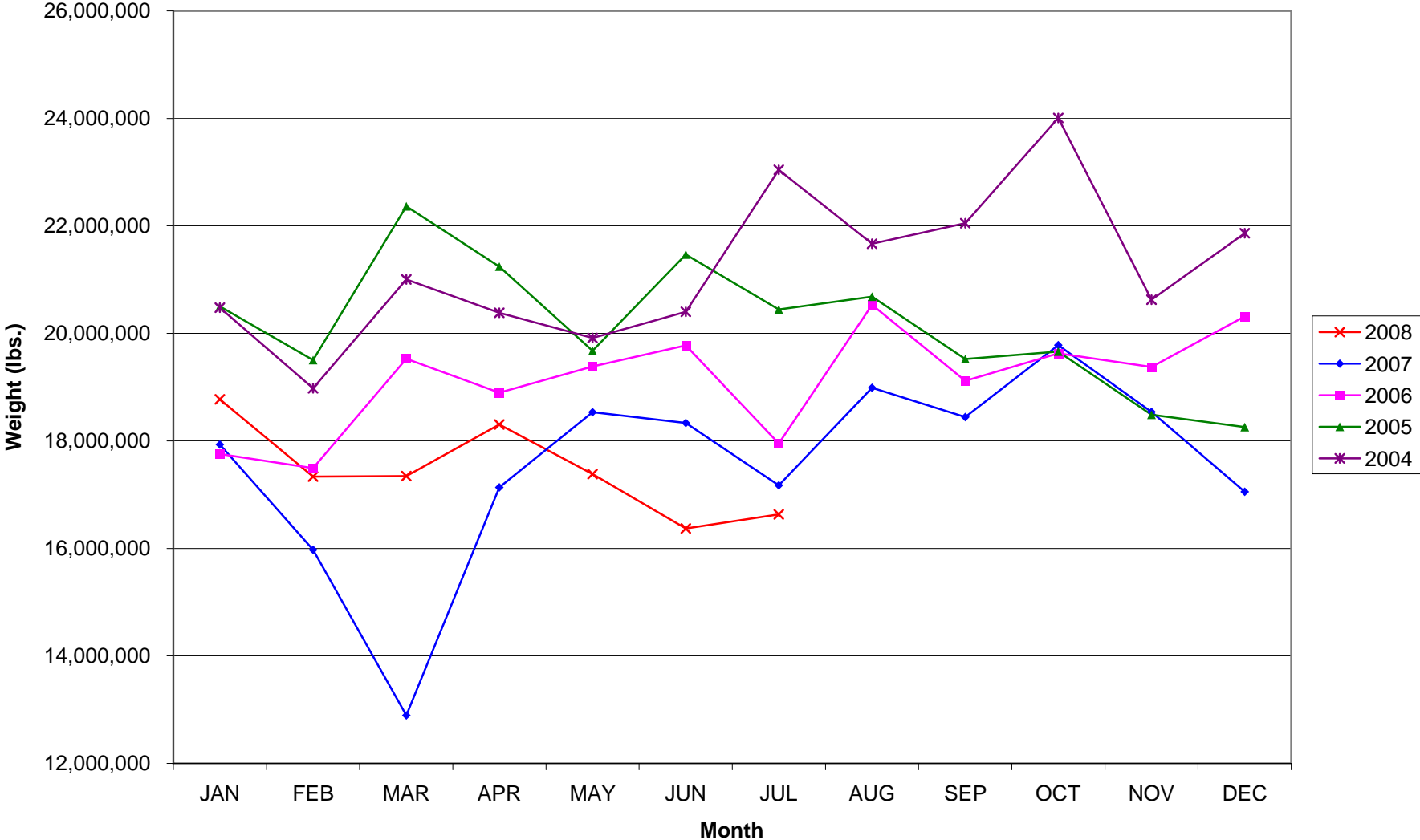
July 2008

| <u>Code</u> | <u>Carrier</u> |
|--------------------|--|
| AM | Aero Mexico/Aerovias de Mexico S.A. de C.V. |
| VB | Aeroenlaces Nacionales S.A. de C.V./vivaAerobus |
| G4 | Allegiant Air |
| AA | American Airlines, Inc. |
| EV | Atlantic Southeast Airlines, Inc. (Delta Connection) |
| XP | Casino Express Airways |
| RP | Chautauqua Airlines, Inc. |
| CO | Continental Airlines |
| DL | Delta Airlines |
| XE | Express Jet Airlines, Inc. |
| F9 | Frontier Airlines DIP |
| QK | Jazz Air LP |
| B6 | JetBlue Airways Corp. |
| YV | Mesa Airlines, Inc. |
| YX | Midwest Airlines, Inc. |
| NW | Northwest Airlines |
| 9E | Pinnacle Airlines, Inc./dba Northwest Airlinck |
| S5 | Shuttle America Corp. (Delta Connection) |
| OO | SkyWest Airlines, Inc. |
| WN | Southwest Airlines |
| AX | Trans States Airlines, Inc. |
| UA | United Airlines, Inc. |
| US | US Airways Group, Inc. |

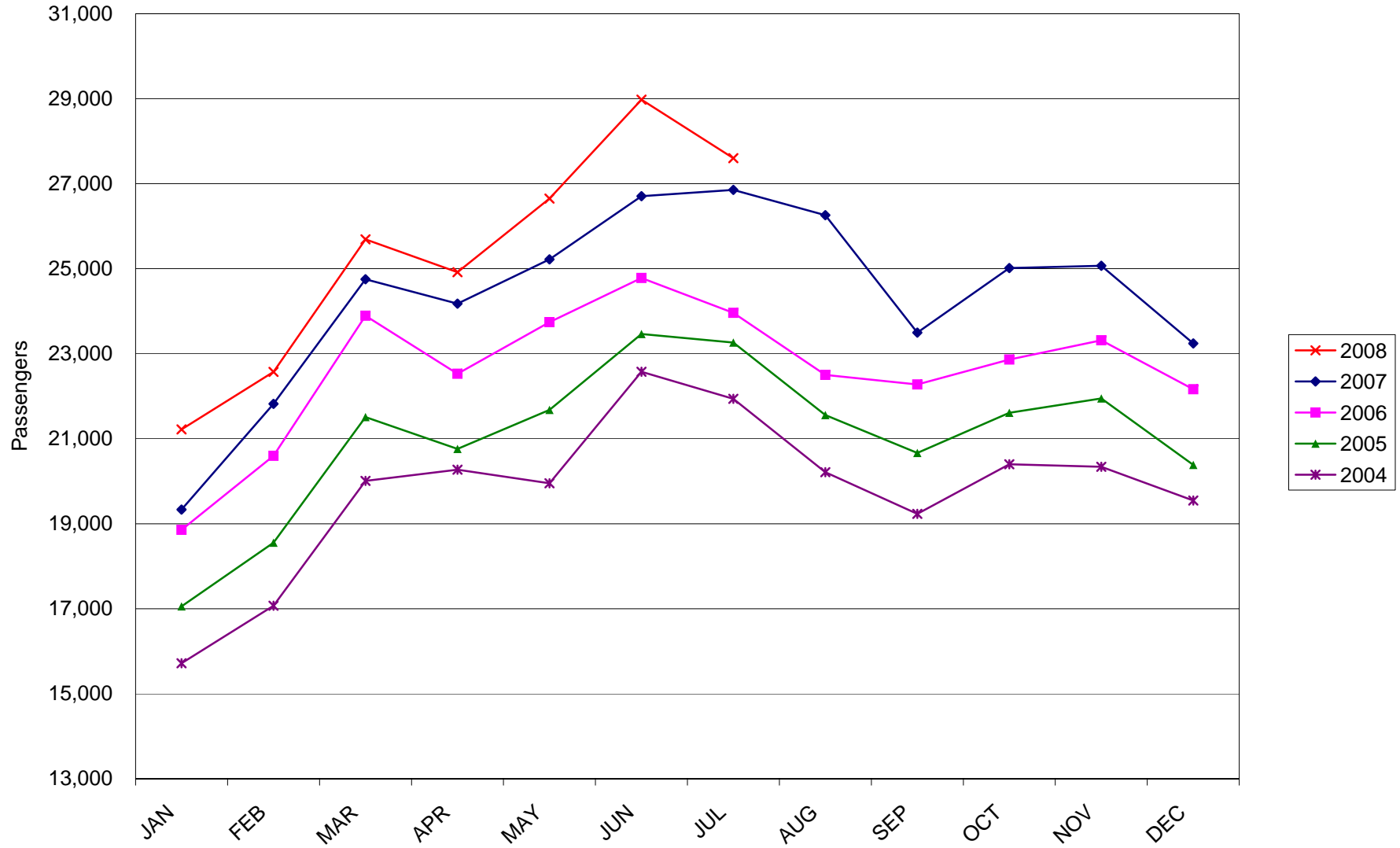
AUSTIN PASSENGER TRAFFIC



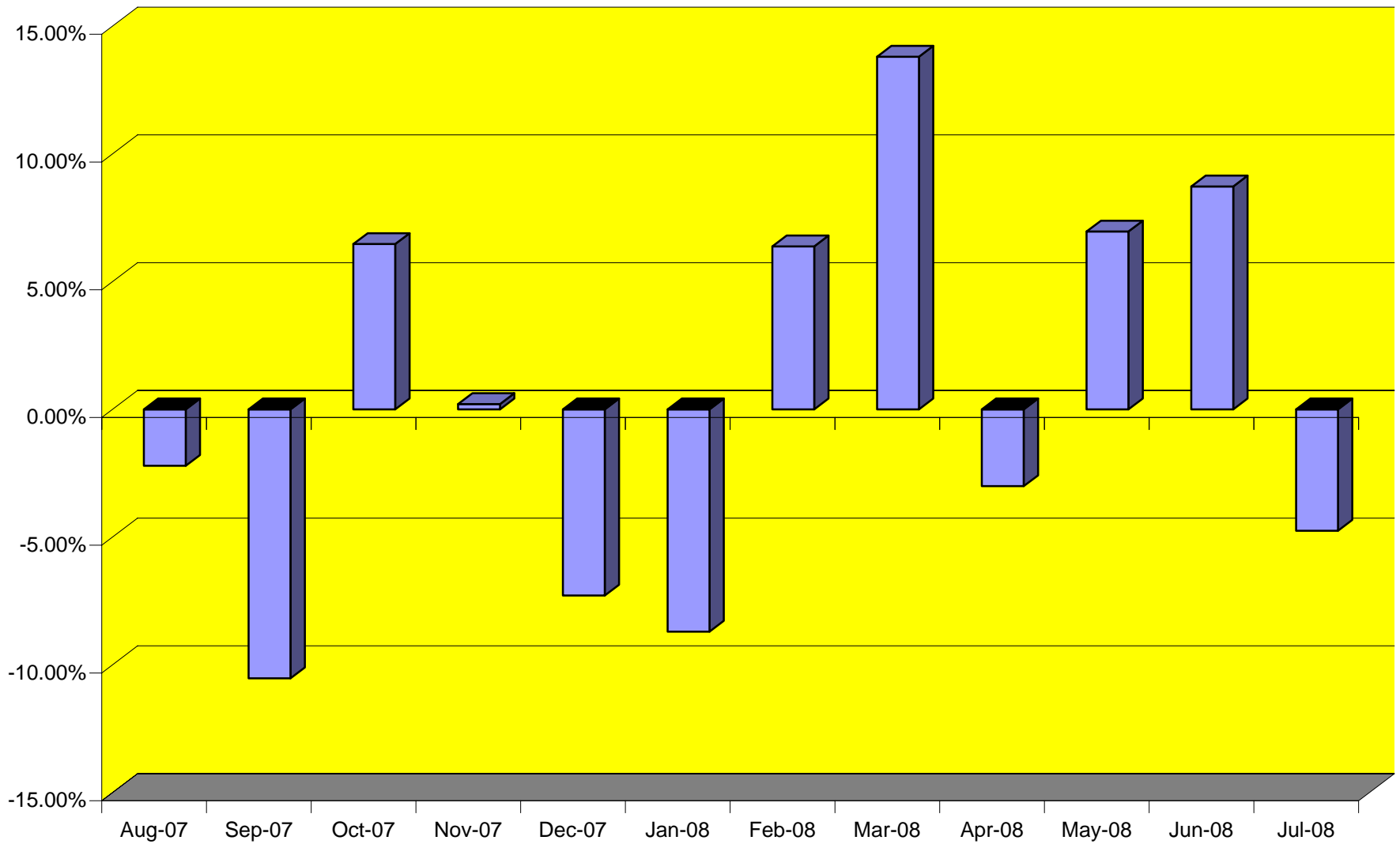
TOTAL CARGO POUNDAGE - AUSTIN, TEXAS



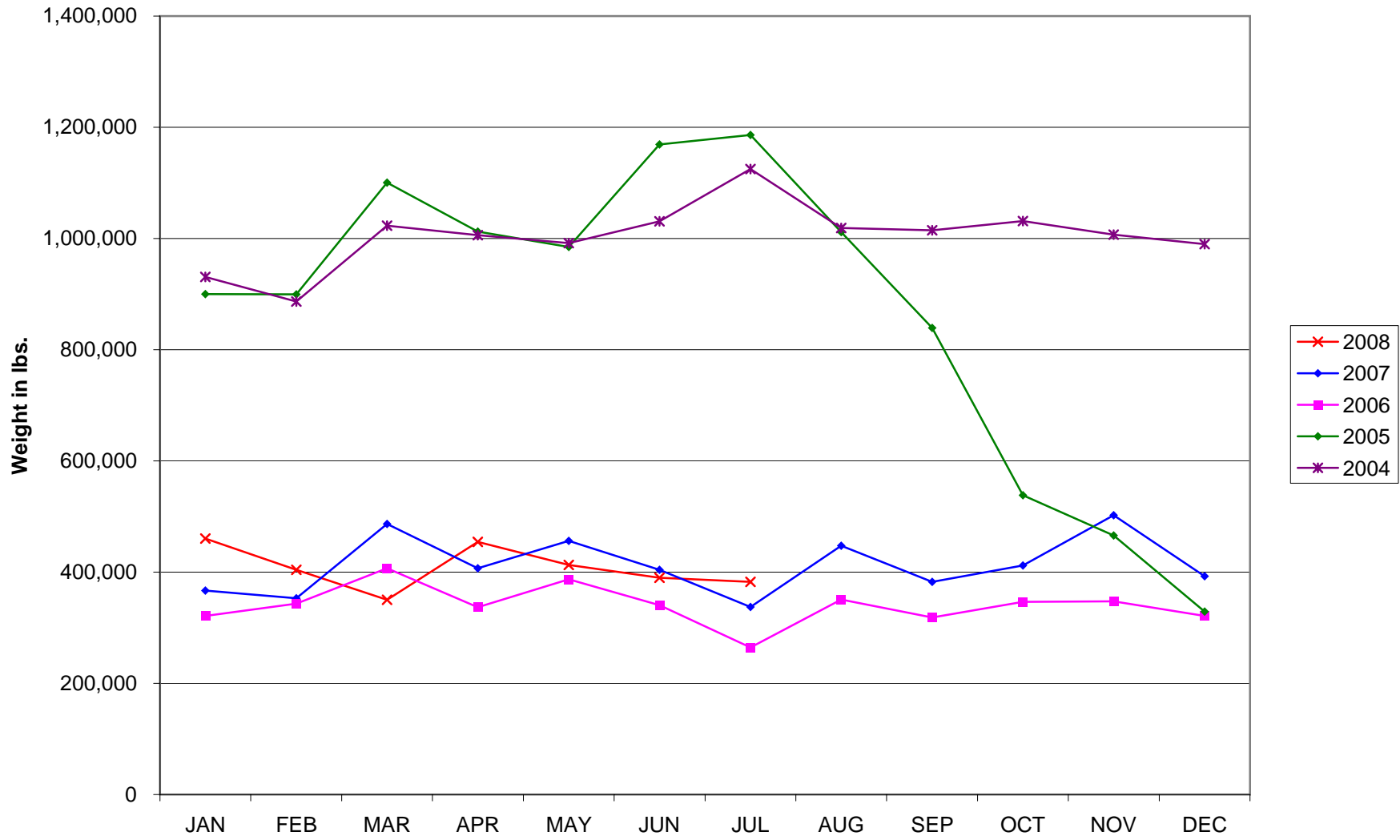
Average Daily Passengers



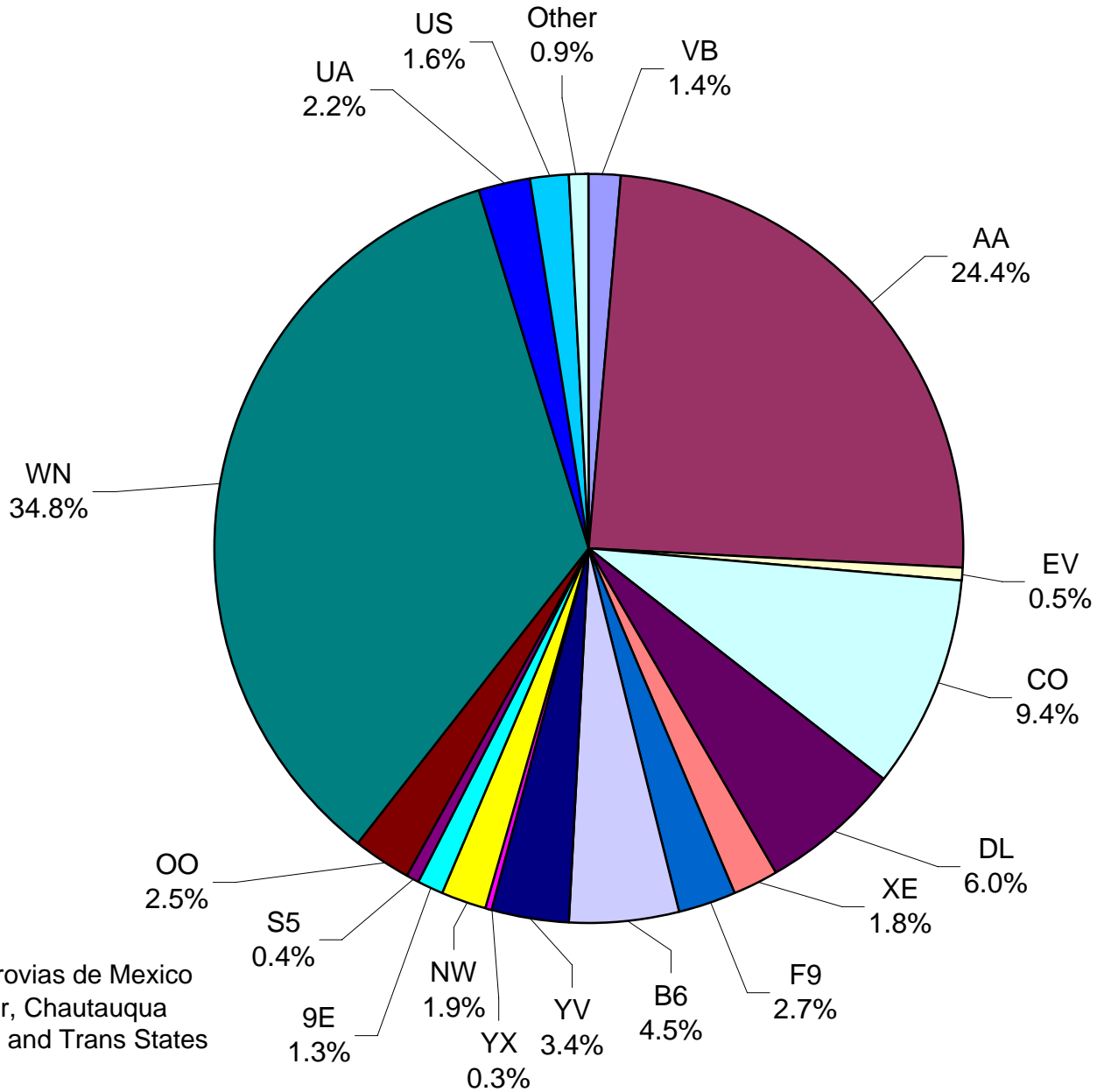
Monthly % Change in Average Daily Passengers



History of International Air Cargo



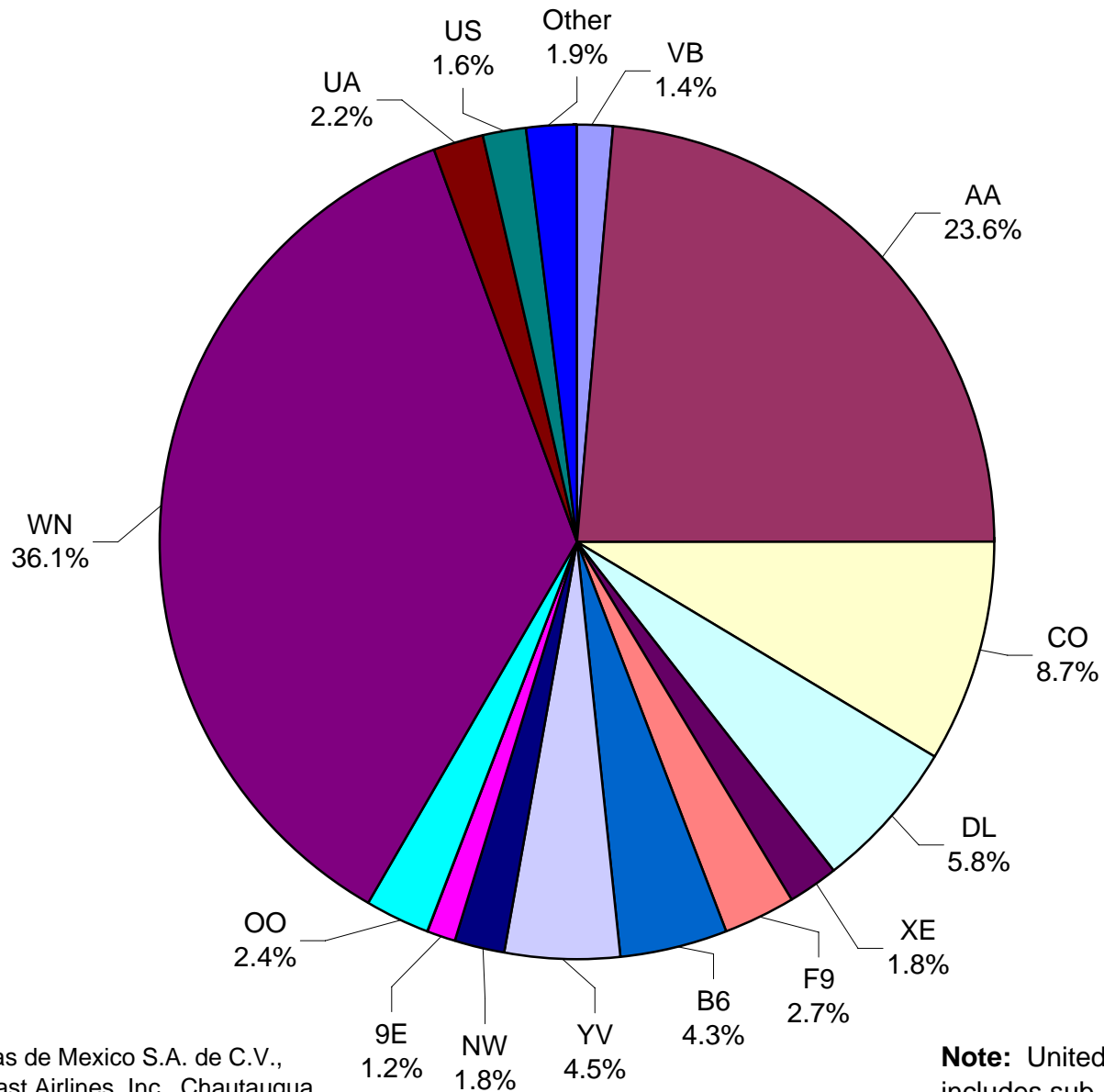
**All Carriers
Total Passengers
July 2008**



Other = Aero Mexico/Aerovias de Mexico S.A. de C.V., Allegiant Air, Chautauqua Airlines, Inc., Jazz Air LP and Trans States Airlines, Inc.

Note: United Airlines percentage includes sub-contractors.

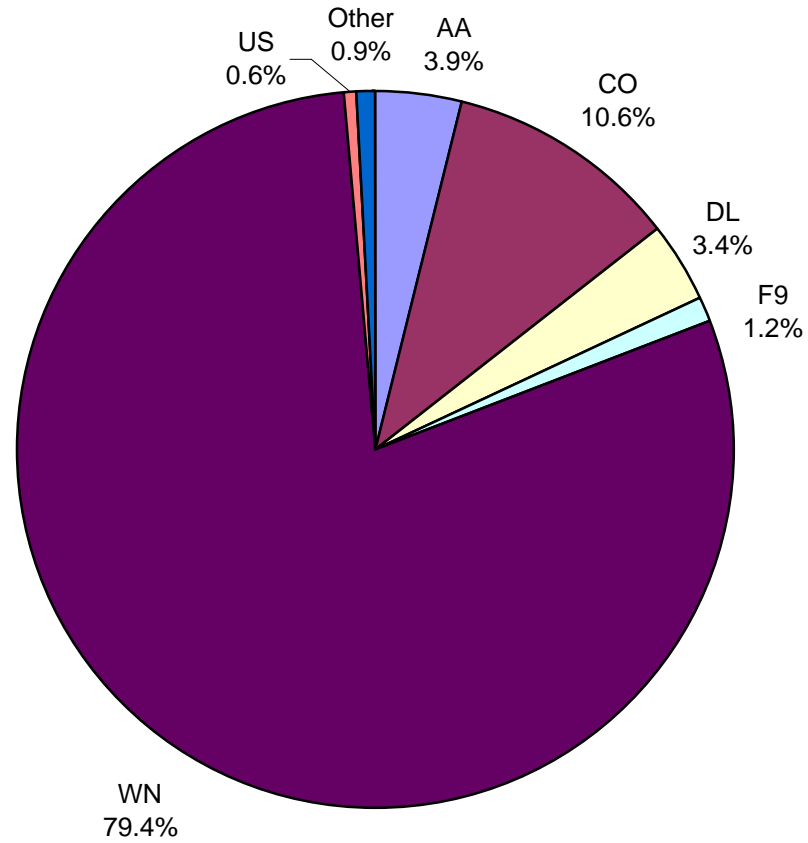
**All Passenger Carriers
Enplaned Revenue Passengers
July 2008**



Other = Aero Mexico/Aerovias de Mexico S.A. de C.V., Allegiant Air, Atlantic Southeast Airlines, Inc., Chautauqua Airlines, Inc., Jazz Air LP, Midwest Airlines, Inc., Shuttle America Corp. and Trans States Airlines, Inc.

Note: United Airlines percentage includes sub-contractors.

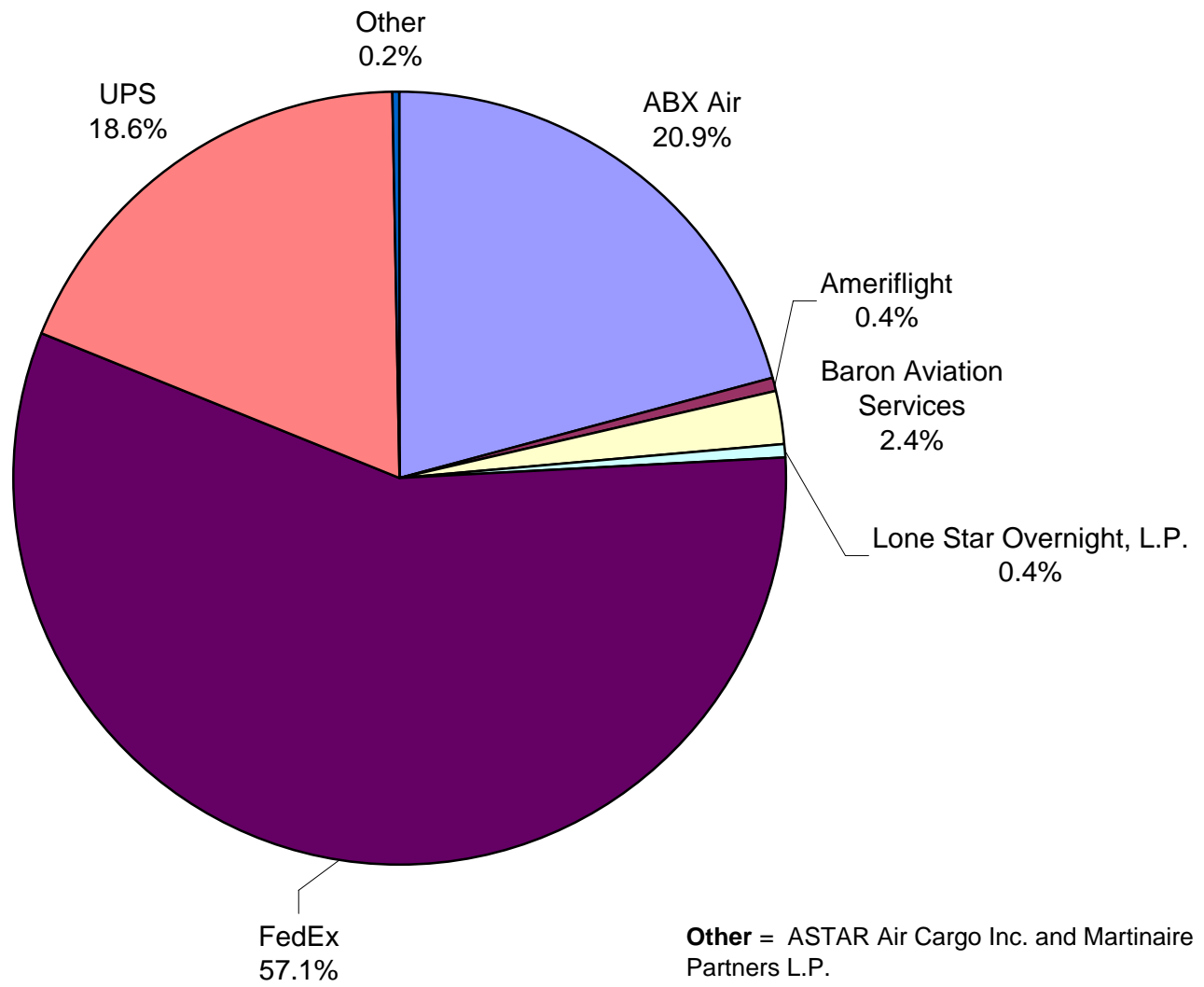
AUS Belly Freight Market Shares July 2008



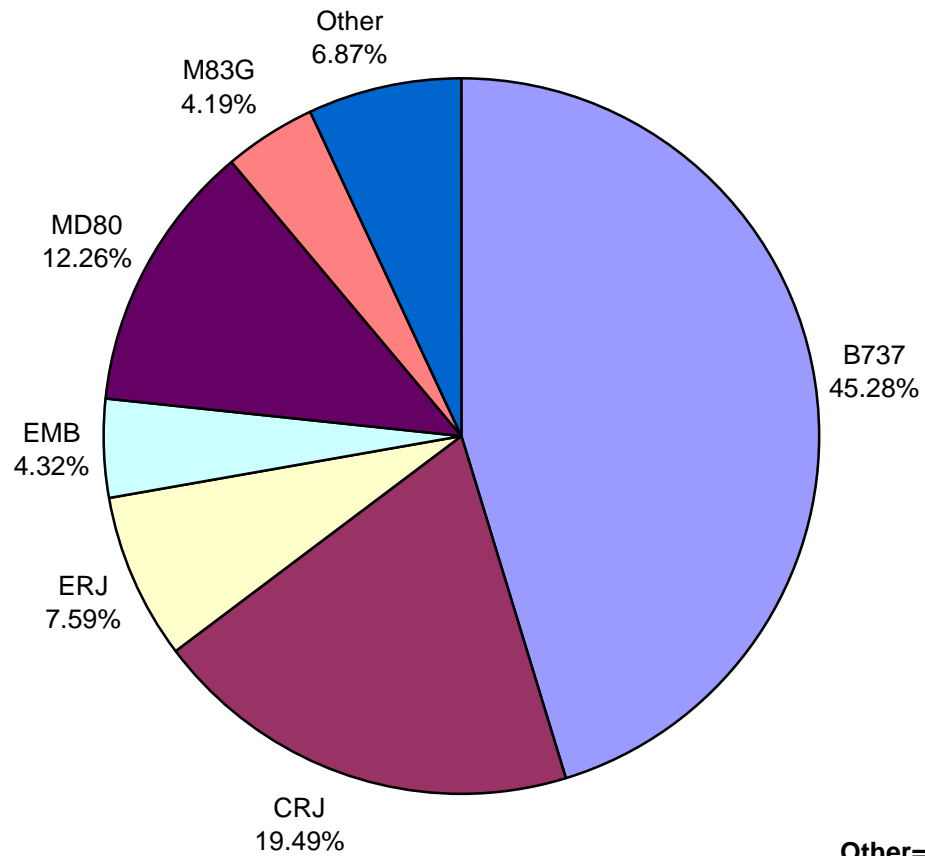
Other = Atlantic Southeast Airlines, Inc., Mesa Airlines, Inc., Northwest Airlines, Pinnacle Airlines, Inc./dba Northwest Airlinck and United Airlines, Inc.

Note: United Airlines percentage includes sub-contractors.

**Air Cargo Market Shares
July 2008**

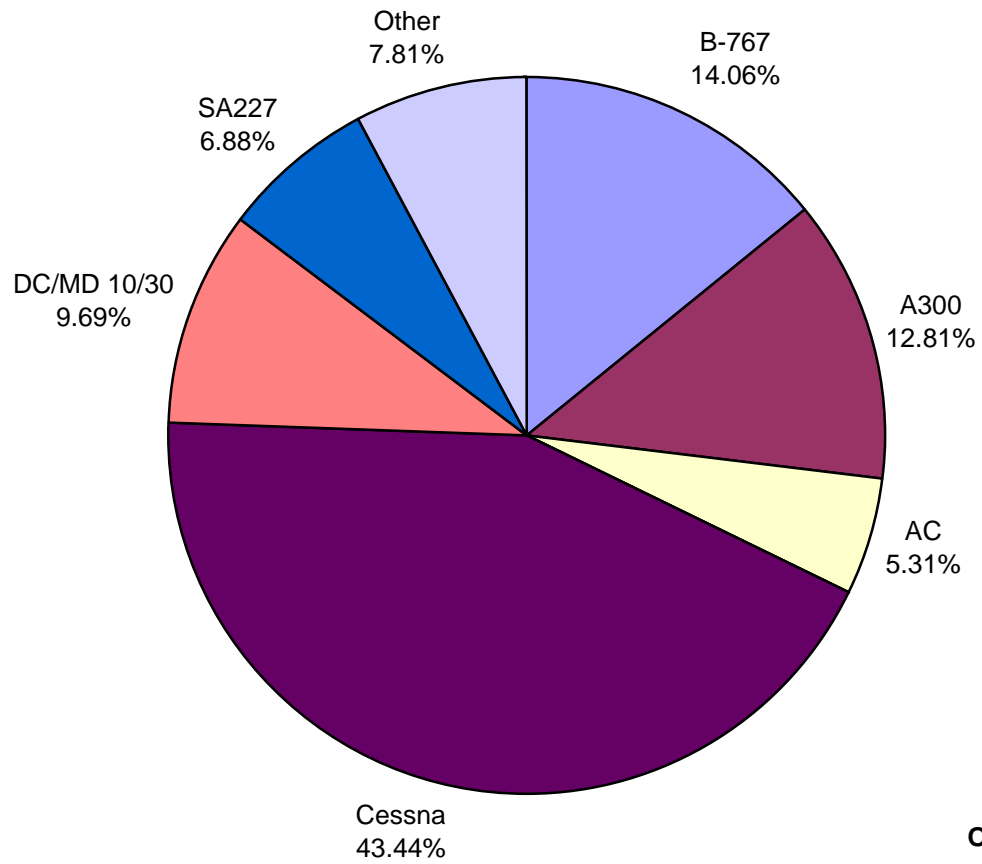


AUS Scheduled Passenger Aircraft Fleet Mix July 2008



Other= A318, A319, A320, 757, 767 and MD88

**AUS Scheduled Cargo Aircraft Fleet Mix
July 2008**



Austin-Bergstrom International Airport

PAX Detail Report - July, 2008

| Company | 07/2008 | 07/2007 | Period | | YTD 2008 | YTD 2007 | YTD | | 2008 Share | 2007 Share | Share Diff |
|---|----------------|----------------|---------------|-------------|------------------|------------------|----------------|-------------|---------------|---------------|---------------|
| | | | Difference | Change | | | Difference | Change | | | |
| Aero Mexico Airlines/Aerovias de Mexico, S.A. de C.V. | 303 | 4,831 | -4,528 | -93.7 | 10,584 | 15,890 | -5,306 | -33.4 | 0.2 | 0.3 | -0.1 |
| Aeroenlaces Nacionales S.A. DE C.V./vivaAerobus | 12,165 | 0 | 12,165 | 0.0 | 34,022 | 0 | 34,022 | 0.0 | 0.6 | 0.0 | 0.6 |
| Allegiant Air | 384 | 0 | 384 | 0.0 | 1,910 | 608 | 1,302 | 214.1 | 0.0 | 0.0 | 0.0 |
| American Airlines, Inc | 208,854 | 224,596 | -15,742 | -7.0 | 1,360,380 | 1,370,858 | -10,478 | -0.8 | 25.2 | 26.8 | -1.6 |
| Atlantic Southeast Airlines, Inc. | 4,015 | 3,686 | 329 | 8.9 | 41,262 | 25,511 | 15,751 | 61.7 | 0.8 | 0.5 | 0.3 |
| Casino Express Airways | 0 | 298 | -298 | -100.0 | 1,347 | 892 | 455 | 51.0 | 0.0 | 0.0 | 0.0 |
| Chautauqua Airlines Inc. | 2,372 | 0 | 2,372 | 0.0 | 13,709 | 68 | 13,641 | 20,060.3 | 0.3 | 0.0 | 0.3 |
| Continental Airlines | 80,108 | 92,572 | -12,464 | -13.5 | 577,211 | 603,595 | -26,384 | -4.4 | 10.7 | 11.8 | -1.1 |
| Delta Airlines | 51,175 | 51,013 | 162 | 0.3 | 273,220 | 269,193 | 4,027 | 1.5 | 5.1 | 5.3 | -0.2 |
| Express Jet Airlines, Inc. | 15,942 | 25,156 | -9,214 | -36.6 | 113,609 | 59,503 | 54,106 | 90.9 | 2.1 | 1.2 | 0.9 |
| Frontier Airlines DIP | 23,385 | 0 | 23,385 | 0.0 | 75,466 | 0 | 75,466 | 0.0 | 1.4 | 0.0 | 1.4 |
| Frontier Airlines, Inc. - Pre Bankruptcy | 0 | 23,847 | -23,847 | -100.0 | 60,210 | 126,331 | -66,121 | -52.3 | 1.1 | 2.5 | -1.4 |
| Grand Holdings, Inc DBA Champion Air | 0 | 0 | 0 | 0.0 | 0 | 412 | -412 | -100.0 | 0.0 | 0.0 | 0.0 |
| JAZZ Air LP | 2,250 | 0 | 2,250 | 0.0 | 7,809 | 0 | 7,809 | 0.0 | 0.1 | 0.0 | 0.1 |
| JetBlue Airways Corporation | 38,213 | 23,218 | 14,995 | 64.6 | 189,927 | 137,645 | 52,282 | 38.0 | 3.5 | 2.7 | 0.8 |
| Mesa Airlines Inc. | 29,044 | 27,034 | 2,010 | 7.4 | 157,889 | 150,353 | 7,536 | 5.0 | 2.9 | 2.9 | 0.0 |
| Miami Air International Inc. | 0 | 0 | 0 | 0.0 | 342 | 334 | 8 | 2.4 | 0.0 | 0.0 | 0.0 |
| Midwest Airlines, Inc. | 2,312 | 0 | 2,312 | 0.0 | 25,331 | 0 | 25,331 | 0.0 | 0.5 | 0.0 | 0.5 |
| MN Airlines, LLC d/b/a Sun Country | 0 | 0 | 0 | 0.0 | 102 | 0 | 102 | 0.0 | 0.0 | 0.0 | 0.0 |
| Northwest Airlines | 16,214 | 10,323 | 5,891 | 57.1 | 95,011 | 75,336 | 19,675 | 26.1 | 1.8 | 1.5 | 0.3 |
| Pace Airlines | 0 | 0 | 0 | 0.0 | 40 | 0 | 40 | 0.0 | 0.0 | 0.0 | 0.0 |
| Pinnacle Airlines, Inc. dba Northwest Airlink | 10,875 | 10,345 | 530 | 5.1 | 61,410 | 65,341 | -3,931 | -6.0 | 1.1 | 1.3 | -0.1 |
| Shuttle America Corporation | 3,548 | 17,828 | -14,280 | -80.1 | 67,810 | 125,915 | -58,105 | -46.1 | 1.3 | 2.5 | -1.2 |
| SkyWest Airlines, Inc | 21,533 | 12,974 | 8,559 | 66.0 | 113,439 | 104,724 | 8,715 | 8.3 | 2.1 | 2.0 | 0.1 |
| Southwest Airlines | 298,067 | 270,751 | 27,316 | 10.1 | 1,899,535 | 1,752,621 | 146,914 | 8.4 | 35.1 | 34.2 | 0.9 |
| Trans States Airlines, Inc | 2,431 | 0 | 2,431 | 0.0 | 9,257 | 20,439 | -11,182 | -54.7 | 0.2 | 0.4 | -0.2 |
| United Airlines, Inc. | 18,956 | 18,424 | 532 | 2.9 | 118,620 | 120,403 | -1,783 | -1.5 | 2.2 | 2.4 | -0.2 |
| US Airways Group, Inc. | 13,461 | 15,559 | -2,098 | -13.5 | 97,969 | 92,472 | 5,497 | 5.9 | 1.8 | 1.8 | 0.0 |
| USA Jet Airlines, Inc. | 0 | 0 | 0 | 0.0 | 16 | 0 | 16 | 0.0 | 0.0 | 0.0 | 0.0 |
| Report Totals | 855,607 | 832,455 | 23,152 | 2.8% | 5,407,437 | 5,118,444 | 288,993 | 5.6% | | | |

Statistics Included in Report:

Domestic Passengers:

Enplaned Revenue, Deplaned Revenue, Through Revenue, Enplaned Non-Revenue, Deplaned Non-Revenue, Through Non-Revenue

International Passenger:

Enplaned Revenue, Deplaned Revenue, Through Revenue, Enplaned Non-Revenue, Deplaned Non-Revenue, Through Non-Revenue, South Terminal-Int'l Enplaned Revenue, South Terminal-Int'l Deplaned Revenue, South Terminal-Int'l Through Revenue, South Terminal-Int'l Enplaned Non-Revenue, South Terminal-Int'l Deplaned Non-Revenue, South Terminal-Int'l Through Non-Revenue

Austin-Bergstrom International Airport

Summary Landing Report

Landing Type: Total

| Month | 2008 | | 2007 | | 2006 | | % Change 2008 - 2007 | | % Change 2007 - 2006 | |
|-----------------------------------|--------|---------------|--------|---------------|--------|---------------|----------------------|--------|----------------------|--------|
| | Count | Weight | Count | Weight | Count | Weight | Count | Weight | Count | Weight |
| January | 4,994 | 508,546,911 | 4,268 | 461,157,264 | 4,314 | 454,270,179 | 17.01% | 10.28% | -1.07% | 1.52% |
| February | 4,707 | 477,510,902 | 4,081 | 432,333,052 | 4,039 | 431,045,336 | 15.34% | 10.45% | 1.04% | 0.30% |
| March | 5,057 | 511,086,453 | 4,693 | 498,304,509 | 4,750 | 489,668,305 | 7.76% | 2.57% | -1.20% | 1.76% |
| April | 4,853 | 498,467,860 | 4,657 | 485,905,500 | 4,513 | 460,099,145 | 4.21% | 2.59% | 3.19% | 5.61% |
| May | 5,213 | 542,161,220 | 5,116 | 524,923,078 | 4,697 | 488,433,026 | 1.90% | 3.28% | 8.92% | 7.47% |
| June | 5,252 | 551,158,994 | 5,005 | 521,795,072 | 4,602 | 473,433,518 | 4.94% | 5.63% | 8.76% | 10.22% |
| July | 5,097 | 553,506,814 | 5,243 | 543,571,241 | 4,597 | 474,383,579 | -2.78% | 1.83% | 14.05% | 14.58% |
| August | | | 5,452 | 559,875,138 | 4,699 | 487,707,507 | | | 16.02% | 14.80% |
| September | | | 5,105 | 513,849,856 | 4,463 | 468,374,570 | | | 14.38% | 9.71% |
| October | | | 5,373 | 539,788,979 | 4,743 | 495,762,514 | | | 13.28% | 8.88% |
| November | | | 5,052 | 515,328,663 | 4,487 | 476,027,737 | | | 12.59% | 8.26% |
| December | | | 4,997 | 511,272,858 | 4,596 | 484,901,631 | | | 8.72% | 5.44% |
| Totals for Selected Period | 35,173 | 3,642,439,154 | 33,063 | 3,467,989,716 | 31,512 | 3,271,333,088 | 6.38% | 5.03% | 4.92% | 6.01% |
| Yearly Totals | 35,173 | 3,642,439,154 | 59,042 | 6,108,105,210 | 54,500 | 5,684,107,047 | | | 8.33% | 7.46% |