

Austin-Bergstrom International Airport

Aviation Activity Report

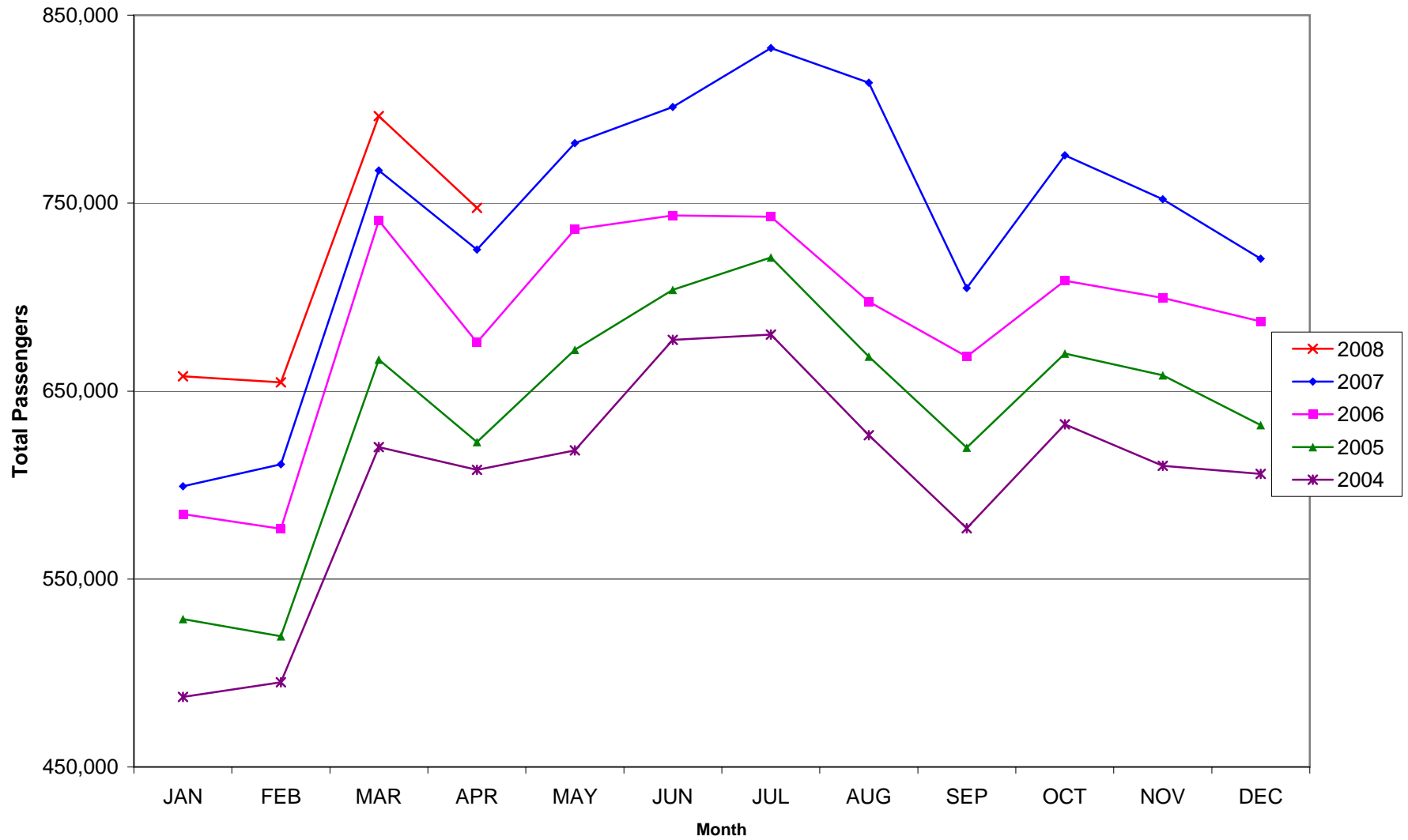
	04/2008	04/2007	Percent Change	01/2008 - 04/2008	01/2007 - 04/2007	Percent Change
<u>Passenger Activity</u>						
Domestic Enplaned Revenue	359,287	347,044	3.53	1,350,342	1,275,763	5.85
Domestic Deplaned Revenue	355,900	339,141	4.94	1,361,833	1,288,925	5.66
Domestic Through Revenue	13,991	19,924	-29.78	66,417	65,896	0.79
International Enplaned Revenue	455	699	-34.91	3,303	2,825	16.92
International Deplaned Revenue	420	727	-42.23	3,148	2,955	6.53
International Through Revenue	0	0	0.00	0	0	0.00
Domestic Enplaned Non-Revenue	8,817	9,067	-2.76	36,236	33,999	6.58
Domestic Deplaned Non-Revenue	8,639	8,691	-0.60	35,051	32,586	7.56
Domestic Through Non-Revenue	0	0	0.00	0	0	0.00
International Enplaned Non-Revenue	0	0	0.00	0	0	0.00
International Deplaned Non-Revenue	0	0	0.00	0	0	0.00
International Through Non-Revenue	0	0	0.00	0	0	0.00
Passenger Totals	747,509	725,293	3.06	2,856,330	2,702,949	5.67
CURRENT PASSENGER RECORD =	832,455					RECORD SET = JULY 2007
<u>Aircraft Operations</u>						
Air Carrier	8,612	8,273	4.10	34,530	31,726	8.84
Commuter & Air Taxi	2,706	2,134	26.80	11,194	7,989	40.12
Military	517	435	18.85	2,178	2,104	3.52
General Aviation						
Itinerant	6,671	6,400	4.23	24,654	22,875	7.78
Local	362	416	-12.98	948	1,169	-18.91
Total G.A.	7,033	6,816	3.18	25,602	24,044	6.48
Total Operations	18,868	17,658	6.85	73,504	65,863	11.60
<u>Cargo Activity</u>						
Mail						
Domestic Enplaned Mail	155,849	137,955	12.97	707,298	600,052	17.87
Domestic Deplaned Mail	352,345	336,095	4.83	1,233,366	1,337,690	-7.80
International Enplaned Mail	0	0	0.00	0	15	-100.00
International Deplaned Mail	0	0	0.00	0	15	-100.00
Mail Totals	508,194	474,050	7.20	1,940,664	1,937,772	0.15
Cargo						
Domestic Enplaned Cargo	8,690,298	7,609,942	14.20	33,518,437	27,494,936	21.91
Domestic Deplaned Cargo	6,707,621	6,737,359	-0.44	27,347,260	24,995,243	9.41
International Enplaned Cargo	454,169	406,943	11.61	1,668,775	1,613,051	3.45
International Deplaned Cargo	0	0	0.00	0	0	0.00
Cargo Totals	15,852,088	14,754,244	7.44	62,534,472	54,103,230	15.58
Belly Freight						
Domestic Enplaned Belly Freight	1,088,424	1,162,367	-6.36	4,101,733	4,884,217	-16.02
Domestic Deplaned Belly Freight	855,283	743,265	15.07	3,182,606	3,009,818	5.74
International Enplaned Belly Freight	0	0	0.00	0	0	0.00
International Deplaned Belly Freight	0	0	0.00	0	0	0.00
Belly Freight Totals	1,943,707	1,905,632	2.00	7,284,339	7,894,035	-7.72
Cargo Totals (Mail, Cargo, Belly Freight)	18,303,989	17,133,926	6.83	71,759,475	63,935,037	12.24
CURRENT CARGO RECORD =	40,215,518					RECORD SET = MARCH 2001

AUS – Airline Codes

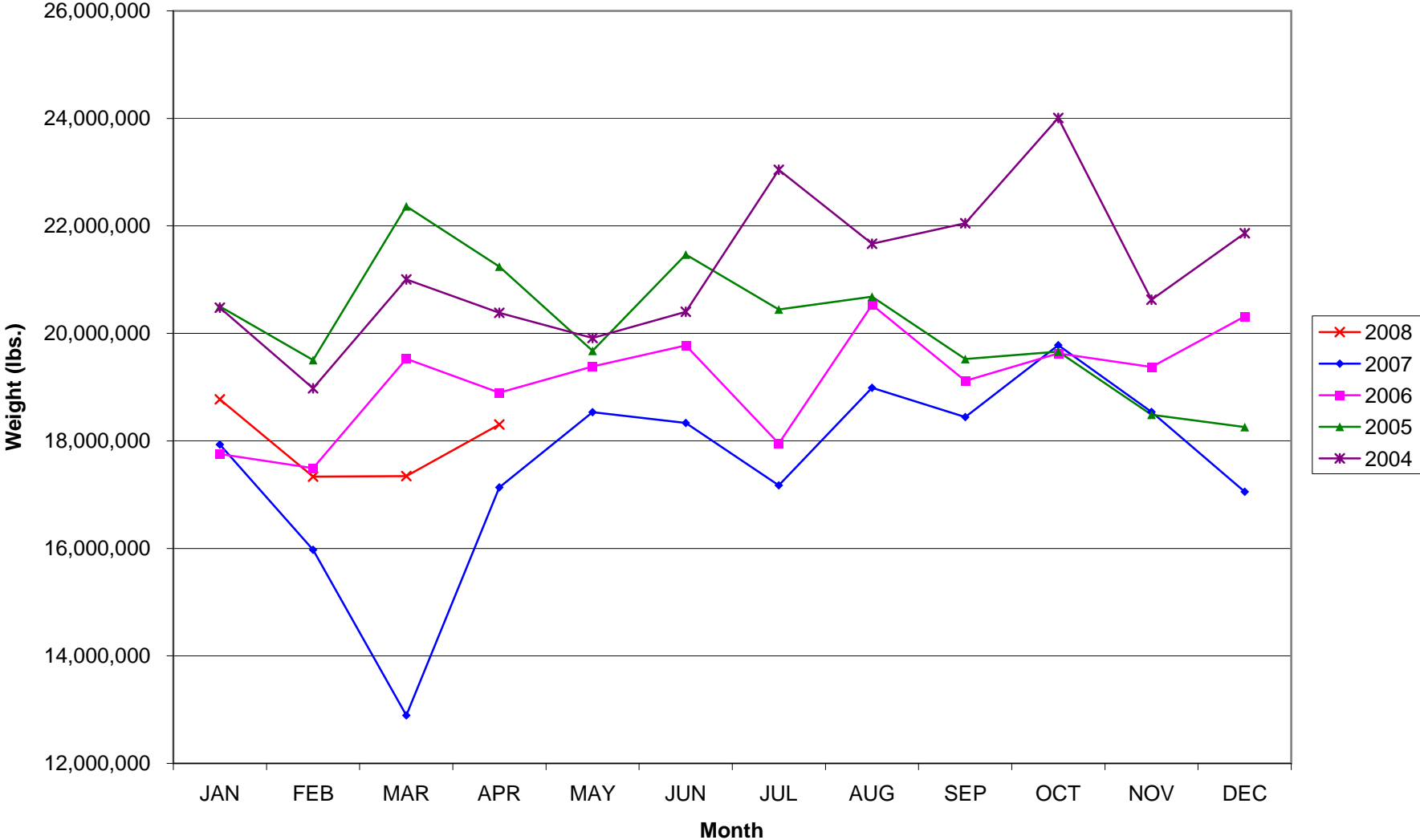
April 2008

<u>Code</u>	<u>Carrier</u>
AM	Aero Mexico/Aerovias de Mexico S.A.
G4	Allegiant Air
AA	American Airlines
EV	Atlantic Southeast Airlines (Delta Connection)
XP	Casino Express Airways
RP	Chautauqua Airlines
CO	Continental Airlines
DL	Delta Airlines
XE	Express Jet Airlines
F9	Frontier Airlines
B6	JetBlue Airways
YV	Mesa Airlines
YX	Midwest Airlines
NW	Northwest Airlines
9E	Pinnacle Airlines/dba Northwest Airlink
S5	Shuttle America (Delta Connection)
OO	SkyWest Airlines
WN	Southwest Airlines
AX	Trans States Airlines
UA	United Airlines
US	US Airways Group

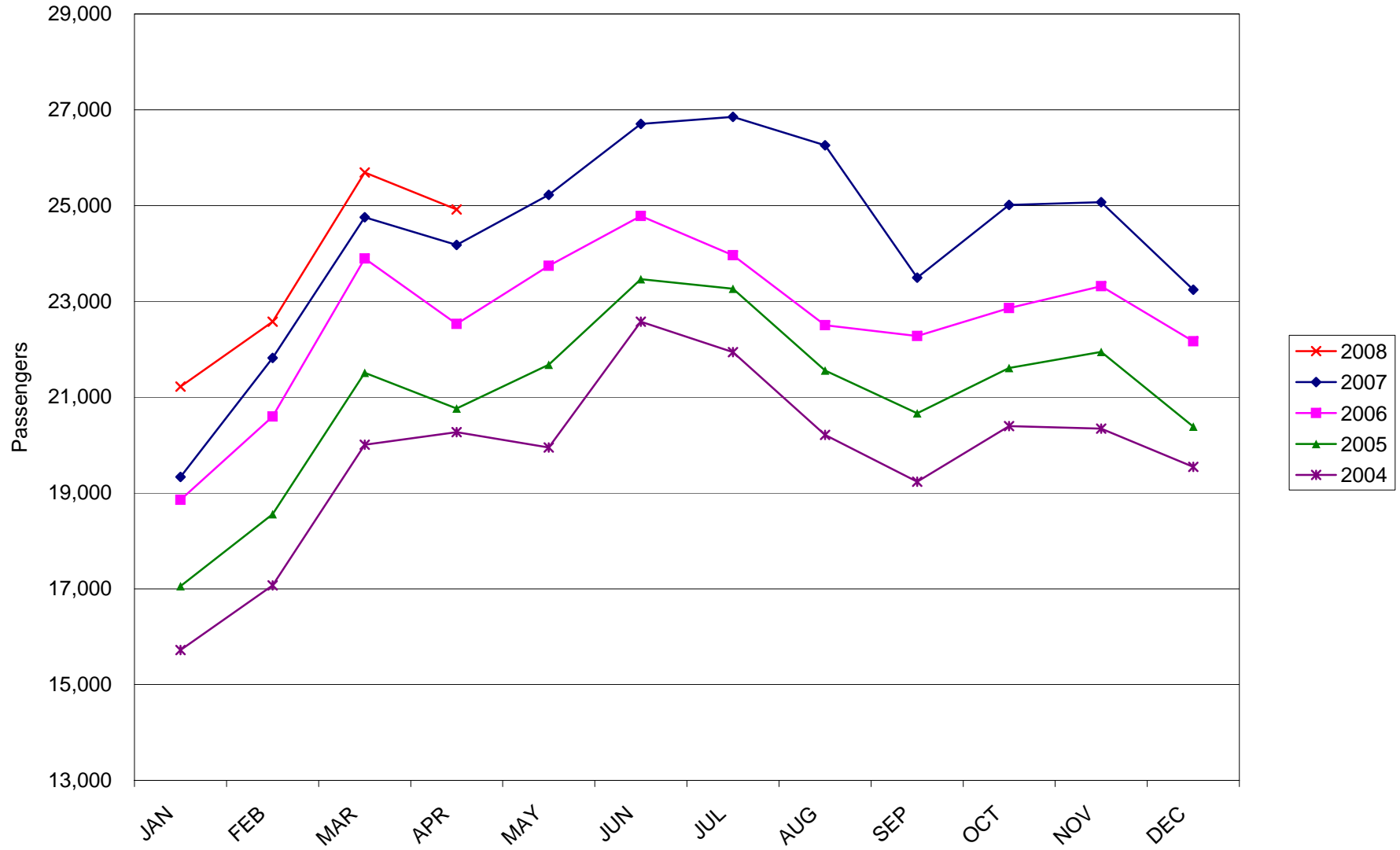
AUSTIN PASSENGER TRAFFIC



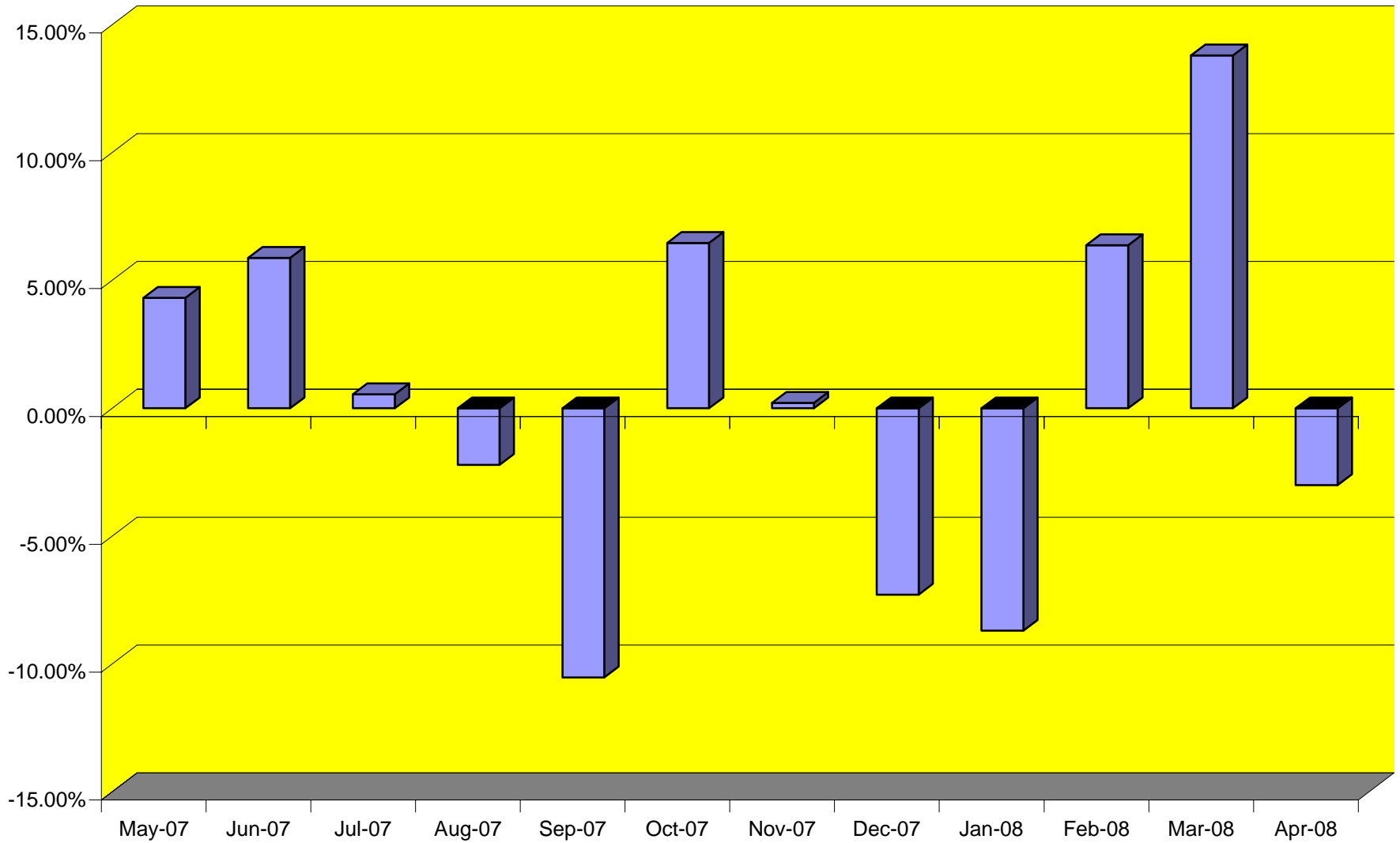
TOTAL CARGO POUNDAGE - AUSTIN, TEXAS



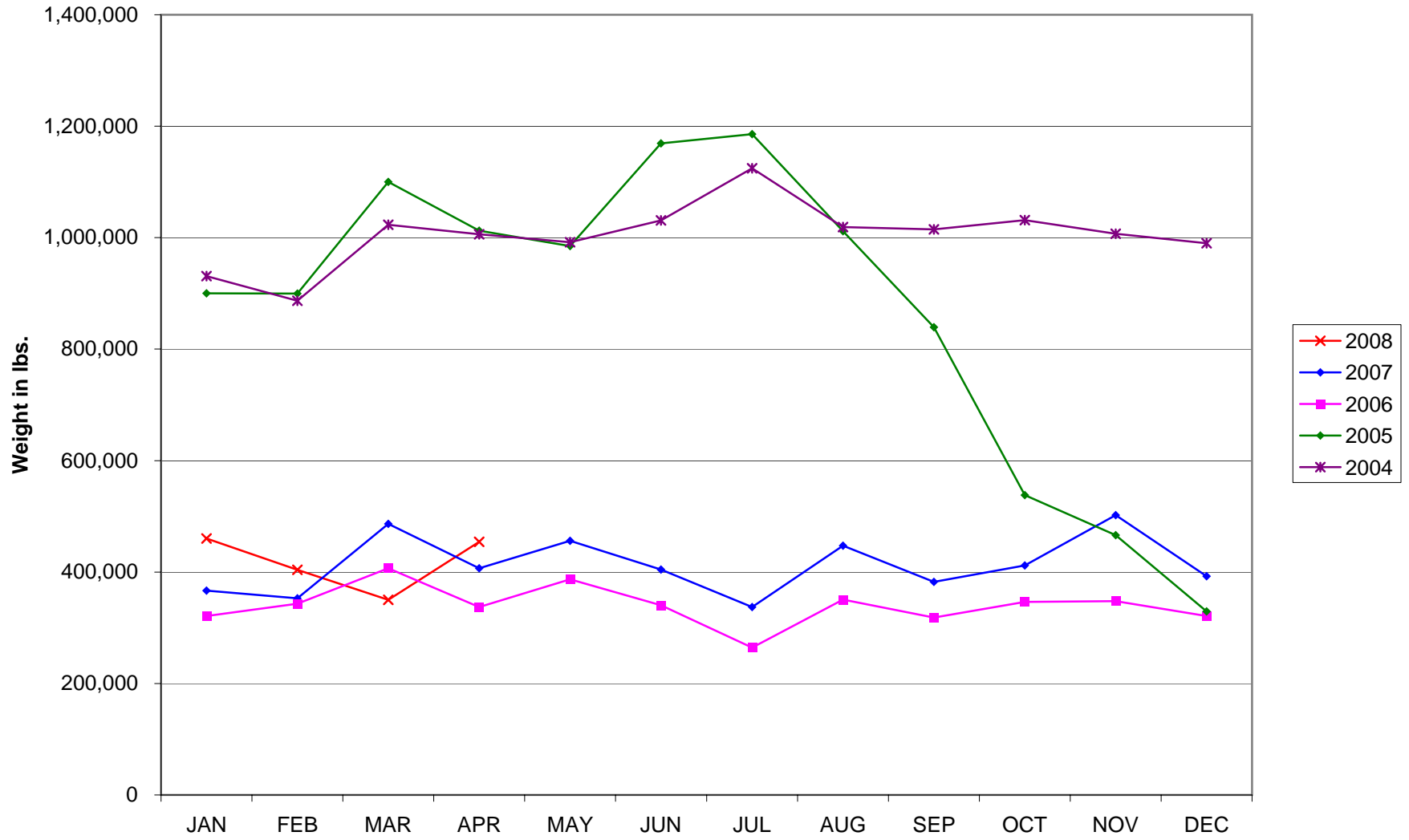
Average Daily Passengers



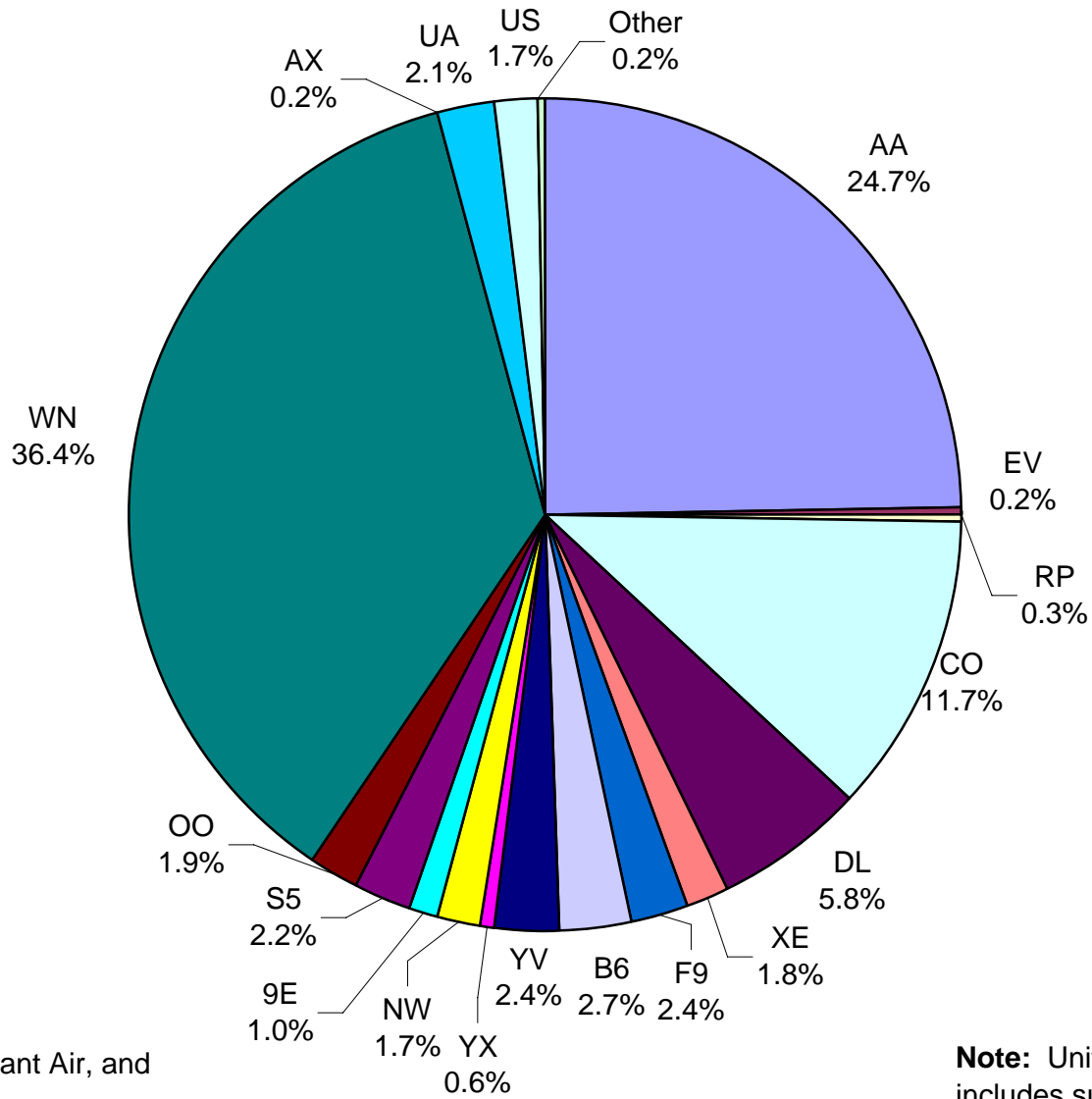
Monthly % Change in Average Daily Passengers



History of International Air Cargo



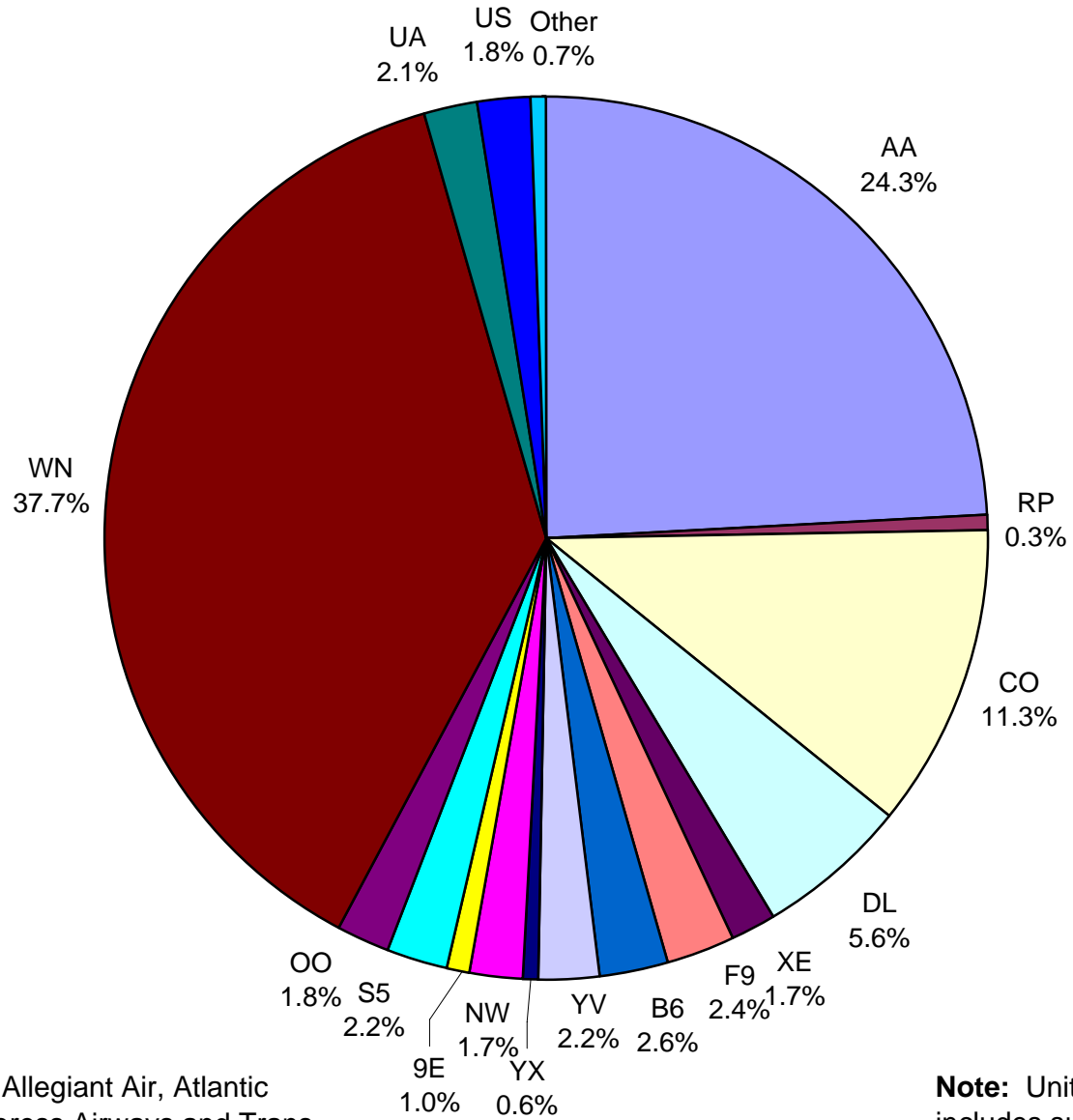
**All Carriers
Total Passengers
April 2008**



Other = Aero Mexico Airlines, Allegiant Air, and Casino Express Airways

Note: United Airlines percentage includes sub-contractors.

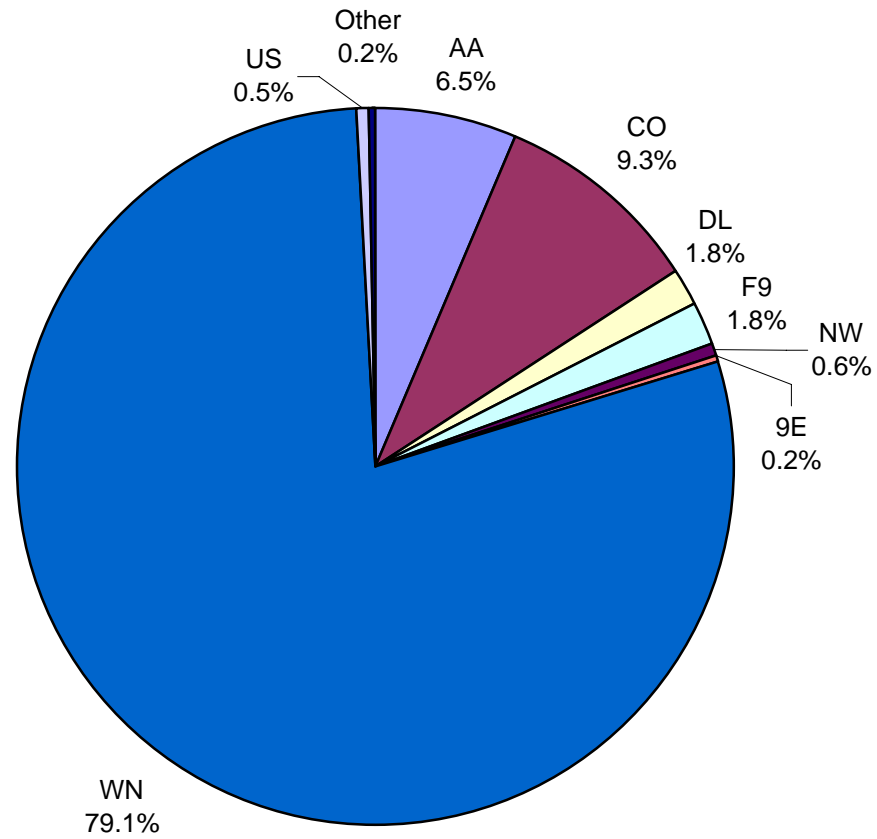
**Signatory Passenger Carriers
Enplaned Revenue Passengers
April 2008**



Other = Aero Mexico Airlines, Allegiant Air, Atlantic Southeast Airlines, Casino Express Airways and Trans States Airlines

Note: United Airlines percentage includes sub-contractors.

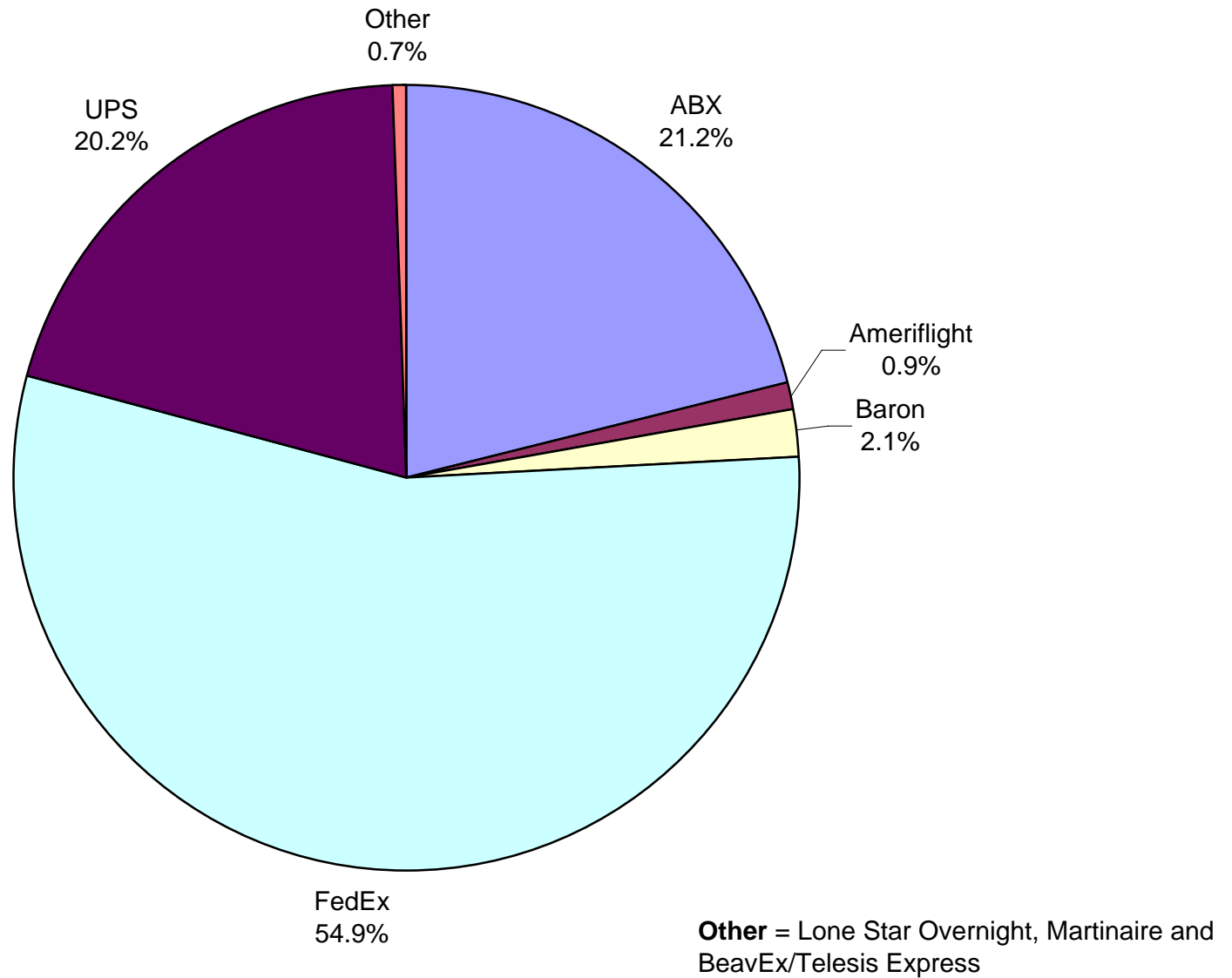
AUS Belly Freight Market Shares April 2008



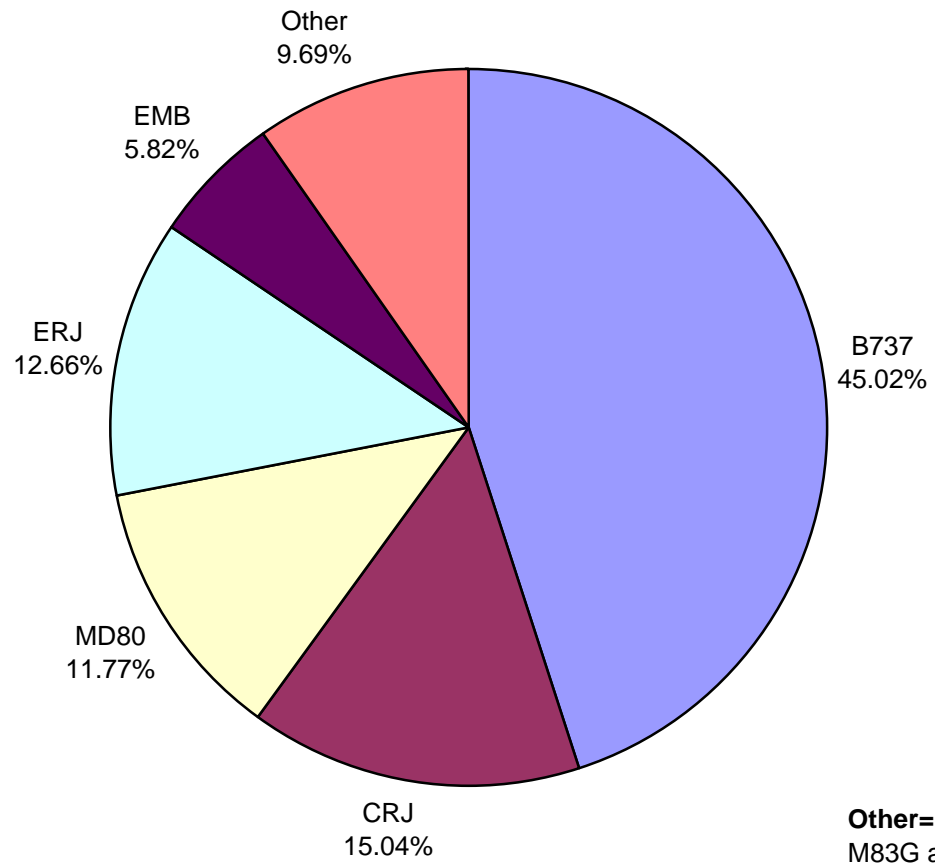
Other = Atlantic Southeast Airlines, Mesa Airlines, Sky West Airlines and United Airlines

Note: United Airlines percentage includes sub-contractors.

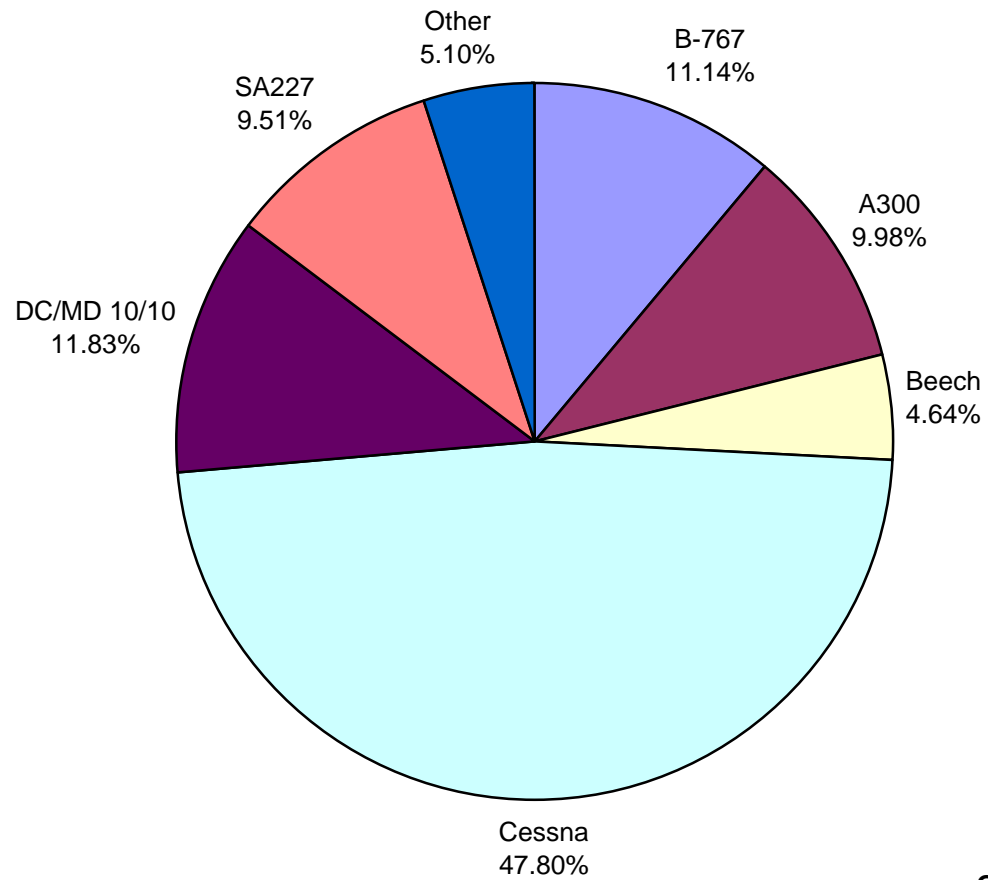
**Air Cargo Market Shares
April 2008**



**AUS Scheduled Aircraft Fleet Mix
April 2008**



**AUS Scheduled Cargo Aircraft Fleet Mix
April 2008**



Other = B727, A310 and AC

Austin-Bergstrom International Airport

PAX Detail Report - April, 2008

Company	04/2008	04/2007	Period		YTD 2008	YTD 2007	YTD		2008 Share	2007 Share	Share Diff
			Difference	Change			Difference	Change			
Aero Mexico Airlines/Aerovias de Mexico, S.A. de C.V.	875	1,426	-551	-38.6	6,451	5,780	671	11.6	0.2	0.2	0.0
Allegiant Air	156	0	156	0.0	1,145	49	1,096	2,236.7	0.0	0.0	0.0
American Airlines, Inc	184,524	197,566	-13,042	-6.6	737,383	713,805	23,578	3.3	25.8	26.4	-0.6
Atlantic Southeast Airlines, Inc.	1,857	4,893	-3,036	-62.0	33,354	14,227	19,127	134.4	1.2	0.5	0.6
Casino Express Airways	293	297	-4	-1.3	1,048	297	751	252.9	0.0	0.0	0.0
Chautauqua Airlines Inc.	2,266	0	2,266	0.0	6,713	68	6,645	9,772.1	0.2	0.0	0.2
Continental Airlines	87,157	87,266	-109	-0.1	328,782	328,527	255	0.1	11.5	12.2	-0.6
Delta Airlines	43,220	27,001	16,219	60.1	130,174	135,907	-5,733	-4.2	4.6	5.0	-0.5
Express Jet Airlines, Inc.	13,112	2,813	10,299	366.1	67,838	2,813	65,025	2,311.6	2.4	0.1	2.3
Frontier Airlines DIP	11,039	0	11,039	0.0	11,039	0	11,039	0.0	0.4	0.0	0.4
Frontier Airlines, Inc. - Pre Bankruptcy	6,651	16,507	-9,856	-59.7	60,210	62,499	-2,289	-3.7	2.1	2.3	-0.2
Grand Holdings, Inc DBA Champion Air	0	412	-412	-100.0	0	412	-412	-100.0	0.0	0.0	0.0
JetBlue Airways Corporation	20,187	20,709	-522	-2.5	75,529	69,950	5,579	8.0	2.6	2.6	0.1
Mesa Airlines Inc.	18,147	23,671	-5,524	-23.3	66,998	77,420	-10,422	-13.5	2.3	2.9	-0.5
Miami Air International Inc.	0	258	-258	-100.0	342	334	8	2.4	0.0	0.0	0.0
Midwest Airlines, Inc.	4,114	0	4,114	0.0	14,676	0	14,676	0.0	0.5	0.0	0.5
MN Airlines, LLC d/b/a Sun Country	0	0	0	0.0	102	0	102	0.0	0.0	0.0	0.0
Northwest Airlines	13,077	9,590	3,487	36.4	47,585	45,618	1,967	4.3	1.7	1.7	0.0
Pinnacle Airlines, Inc. dba Northwest Airlink	7,837	10,646	-2,809	-26.4	29,416	33,248	-3,832	-11.5	1.0	1.2	-0.2
Shuttle America Corporation	16,401	17,258	-857	-5.0	42,939	74,263	-31,324	-42.2	1.5	2.7	-1.2
SkyWest Airlines, Inc	14,032	19,819	-5,787	-29.2	56,730	55,617	1,113	2.0	2.0	2.1	-0.1
Southwest Airlines	271,852	251,587	20,265	8.1	1,010,225	939,526	70,699	7.5	35.4	34.8	0.6
Trans States Airlines, Inc	1,864	2,002	-138	-6.9	1,864	20,439	-18,575	-90.9	0.1	0.8	-0.7
United Airlines, Inc.	15,895	17,819	-1,924	-10.8	65,962	66,862	-900	-1.3	2.3	2.5	-0.2
US Airways Group, Inc.	12,953	13,753	-800	-5.8	59,809	55,288	4,521	8.2	2.1	2.0	0.0
USA Jet Airlines, Inc.	0	0	0	0.0	16	0	16	0.0	0.0	0.0	0.0
Report Totals	747,509	725,293	22,216	3.1%	2,856,330	2,702,949	153,381	5.7%			

Statistics Included in Report:

Domestic Passengers:

Enplaned Revenue, Deplaned Revenue, Through Revenue, Enplaned Non-Revenue, Deplaned Non-Revenue, Through Non-Revenue

International Passenger:

Enplaned Revenue, Deplaned Revenue, Through Revenue, Enplaned Non-Revenue, Deplaned Non-Revenue, Through Non-Revenue

Austin-Bergstrom International Airport

Summary Landing Report

Landing Type: Total

Month	2008		2007		2006		% Change 2008 - 2007		% Change 2007 - 2006	
	Count	Weight	Count	Weight	Count	Weight	Count	Weight	Count	Weight
January	4,995	508,563,011	4,269	461,169,144	4,315	454,283,479	17.01%	10.28%	-1.07%	1.52%
February	4,707	477,510,902	4,084	433,092,352	4,039	431,045,336	15.25%	10.26%	1.11%	0.47%
March	5,057	511,086,453	4,693	498,304,509	4,753	489,791,305	7.76%	2.57%	-1.26%	1.74%
April	4,853	498,467,860	4,659	485,924,900	4,515	460,181,145	4.16%	2.58%	3.19%	5.59%
May			5,116	524,923,078	4,701	488,777,890			8.83%	7.40%
June			5,006	521,808,372	4,603	473,474,518			8.76%	10.21%
July			5,245	543,679,941	4,600	474,488,279			14.02%	14.58%
August			5,453	559,884,838	4,700	487,717,207			16.02%	14.80%
September			5,107	513,882,056	4,465	468,401,170			14.38%	9.71%
October			5,373	539,788,979	4,744	495,772,214			13.26%	8.88%
November			5,053	515,341,963	4,494	476,125,637			12.44%	8.24%
December			4,997	511,272,858	4,598	484,969,931			8.68%	5.42%
Totals for Selected Period	19,612	1,995,628,226	17,705	1,878,490,905	17,622	1,835,301,265	10.77%	6.24%	0.47%	2.35%
Yearly Totals	19,612	1,995,628,226	59,055	6,109,072,990	54,527	5,685,028,111			8.30%	7.46%