

Austin-Bergstrom International Airport

Aviation Activity Report

	02/2009	02/2008	Percent Change	01/2009 - 02/2009	01/2008 - 02/2008	Percent Change
<u>Passenger Activity</u>						
Domestic Enplaned Revenue	261,202	306,691	-14.83	535,925	610,933	-12.28
Domestic Deplaned Revenue	264,869	311,217	-14.89	541,542	626,783	-13.60
Domestic Through Revenue *	0 *	17,293	-100.00	0	35,324	-100.00
International Enplaned Revenue	618	792	-21.97	1,262	1,711	-26.24
International Deplaned Revenue	587	801	-26.72	1,223	1,676	-27.03
International Through Revenue *	0 *	0	0.00	0	0	0.00
Domestic Enplaned Non-Revenue	9,072	9,084	-0.13	19,004	18,480	2.84
Domestic Deplaned Non-Revenue	8,615	8,754	-1.59	17,905	17,541	2.08
Domestic Through Non-Revenue *	0 *	0	0.00	0	0	0.00
International Enplaned Non-Revenue	32	0	0.00	58	0	0.00
International Deplaned Non-Revenue	36	0	0.00	53	0	0.00
International Through Non-Revenue *	0 *	0	0.00	0	0	0.00
South Terminal-Intl Enplaned Revenue	1,413	0	0.00	3,267	0	0.00
South Terminal-Intl Deplaned Revenue	1,302	0	0.00	3,664	0	0.00
South Terminal-Intl Through Revenue *	0 *	0	0.00	0	0	0.00
South Terminal-Intl Enplaned Non-Revenue	0	0	0.00	0	0	0.00
South Terminal-Intl Deplaned Non-Revenue	0	0	0.00	0	0	0.00
South Terminal-Intl Through Non-Revenue *	0 *	0	0.00	0	0	0.00
Passenger Totals	547,746	654,632	-16.33	1,123,903	1,312,448	-14.37
CURRENT PASSENGER RECORD = 869,308				RECORD SET = JUNE 2008		
<u>Aircraft Operations</u>						
Air Carrier	7,122	8,335	-14.55	15,034	17,043	-11.79
Commuter & Air Taxi	1,192	2,659	-55.17	2,471	5,551	-55.49
Military	427	728	-41.35	700	1,171	-40.22
General Aviation						
Itinerant	4,653	6,237	-25.40	9,257	11,840	-21.82
Local	83	142	-41.55	217	386	-43.78
Total G.A.	4,736	6,379	-25.76	9,474	12,226	-22.51
Total Operations	13,477	18,101	-25.55	27,679	35,991	-23.09

* Please note that as of January 1, 2009, Through Passengers will no longer be tracked.

Austin-Bergstrom International Airport

Aviation Activity Report

	02/2009	02/2008	Percent Change	01/2009 - 02/2009	01/2008 - 02/2008	Percent Change
<u>Cargo Activity</u>						
Mail						
Domestic Enplaned Mail	131,922	184,783	-28.61	280,841	368,956	-23.88
Domestic Deplaned Mail	395,375	305,345	29.48	881,472	611,361	44.18
International Enplaned Mail	0	0	0.00	0	0	0.00
International Deplaned Mail	0	0	0.00	0	0	0.00
South Terminal-Intl Enplaned Mail	0	0	0.00	0	0	0.00
South Terminal-Intl Deplaned Mail	0	0	0.00	0	0	0.00
Mail Totals	527,297	490,128	7.58	1,162,313	980,317	18.57
Cargo						
Domestic Enplaned Cargo	5,554,375	7,929,833	-29.96	11,714,689	16,639,699	-29.60
Domestic Deplaned Cargo	4,664,516	6,882,401	-32.23	9,744,013	14,011,539	-30.46
International Enplaned Cargo	258,008	403,935	-36.13	539,768	864,290	-37.55
International Deplaned Cargo	0	0	0.00	0	0	0.00
South Terminal-Intl Enplaned Cargo	0	0	0.00	0	0	0.00
South Terminal-Intl Deplaned Cargo	0	0	0.00	0	0	0.00
Cargo Totals	10,476,899	15,216,169	-31.15	21,998,470	31,515,528	-30.20
Belly Freight						
Domestic Enplaned Belly Freight	660,039	847,482	-22.12	1,417,636	2,030,105	-30.17
Domestic Deplaned Belly Freight	606,346	783,491	-22.61	1,183,543	1,584,913	-25.32
International Enplaned Belly Freight	0	0	0.00	0	0	0.00
International Deplaned Belly Freight	0	0	0.00	0	0	0.00
South Terminal-Intl Enplaned Belly Frt	0	0	0.00	0	0	0.00
South Terminal-Intl Deplaned Belly Frt	0	0	0.00	0	0	0.00
Belly Freight Totals	1,266,385	1,630,973	-22.35	2,601,179	3,615,018	-28.05
Cargo Totals (Mail, Cargo, Belly Freight)	12,270,581	17,337,270	-29.22	25,761,962	36,110,863	-28.66

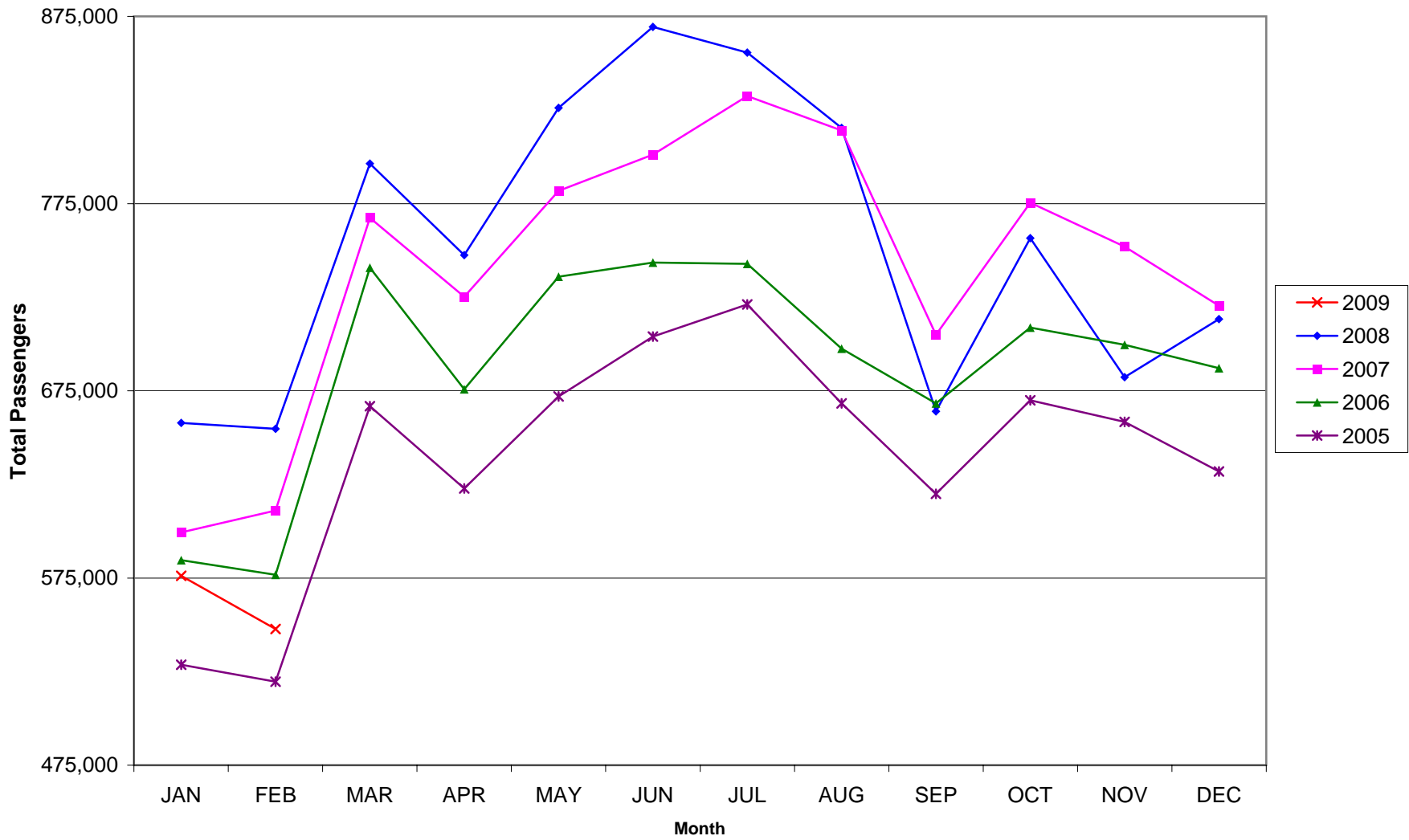
CURRENT CARGO RECORD = 40,215,518

RECORD SET = MARCH 2001

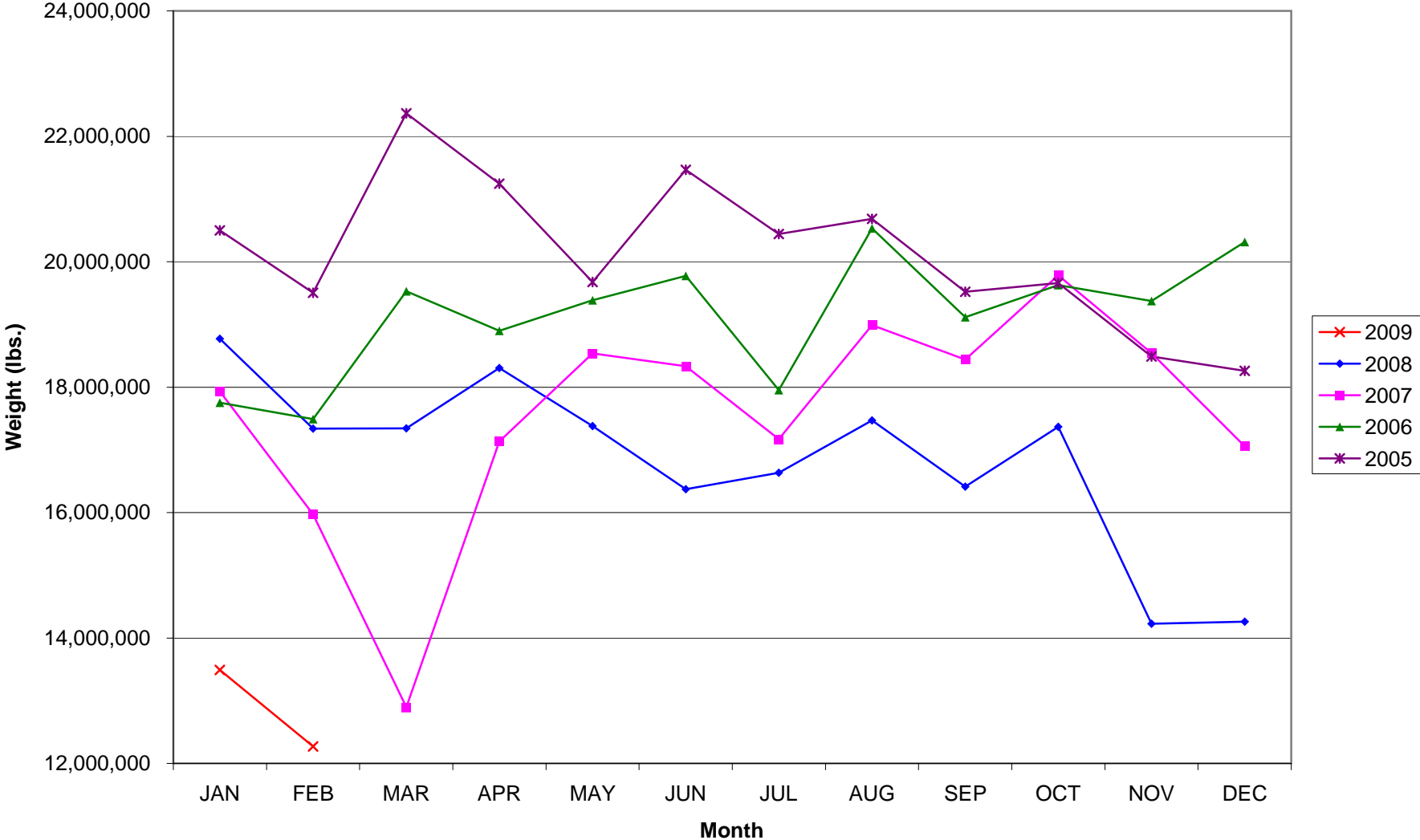
AUS – Airline Codes
February 2009

<u>Code</u>	<u>Carrier</u>
VB	Aeroenlaces Nacionales S.A. de C.V./vivaAerobus
AA	American Airlines, Inc.
EV	Atlantic Southeast Airlines, Inc. (Delta Connection)
XP	Casino Express Airways
CO	Continental Airlines
DL	Delta Airlines
F9	Frontier Airlines DIP
QK	Jazz Air LP
B6	JetBlue Airways Corp.
YV	Mesa Airlines, Inc.
NW	Northwest Airlines
9E	Pinnacle Airlines, Inc. (Northwest AirlinK & Delta Connection)
S5	Shuttle America Corp. (Delta Connection)
OO	SkyWest Airlines, Inc.
WN	Southwest Airlines
AX	Trans States Airlines, Inc.
UA	United Airlines, Inc. (GoJet Airlines dba United Express)
US	US Airways Group, Inc.

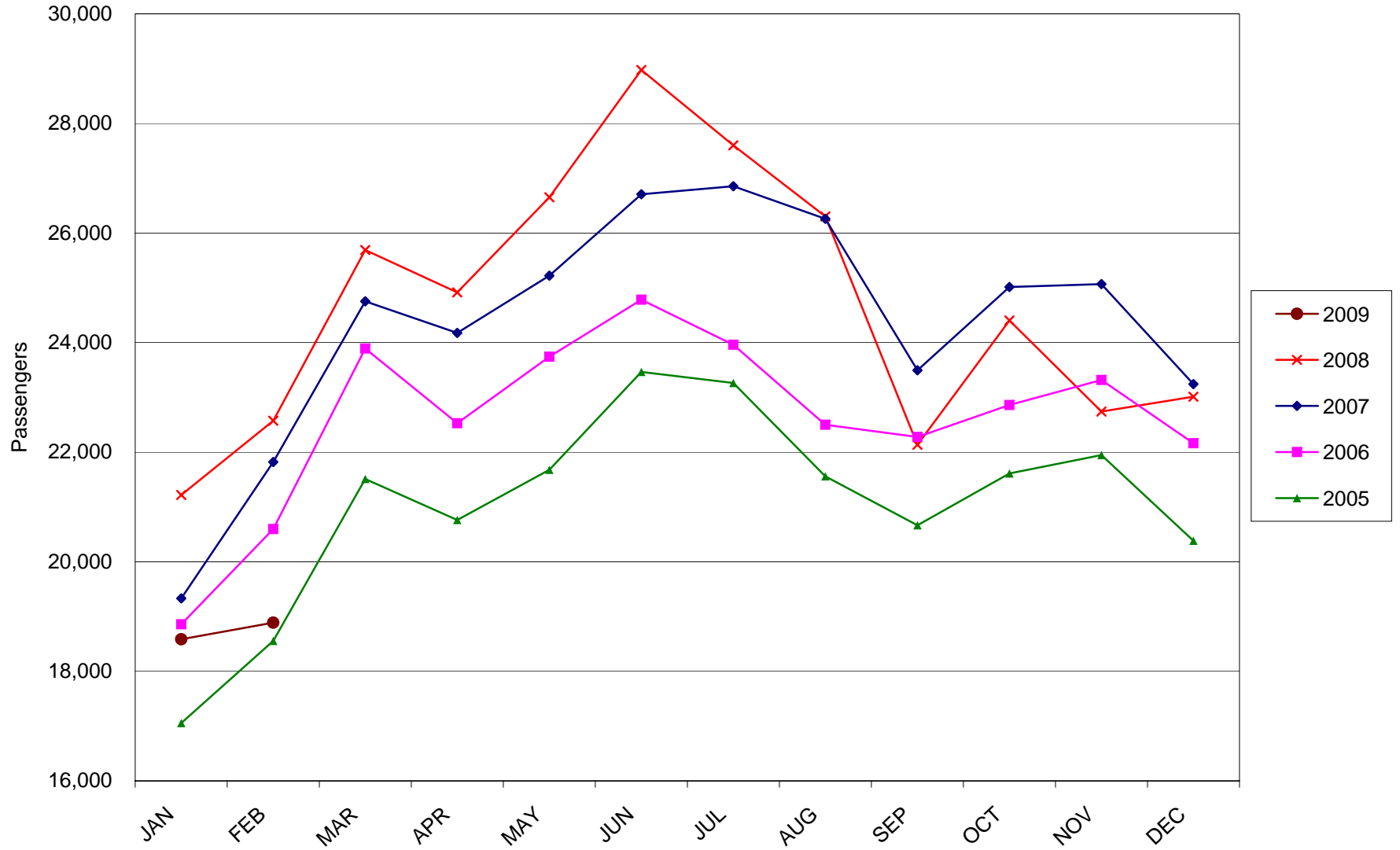
AUSTIN PASSENGER TRAFFIC



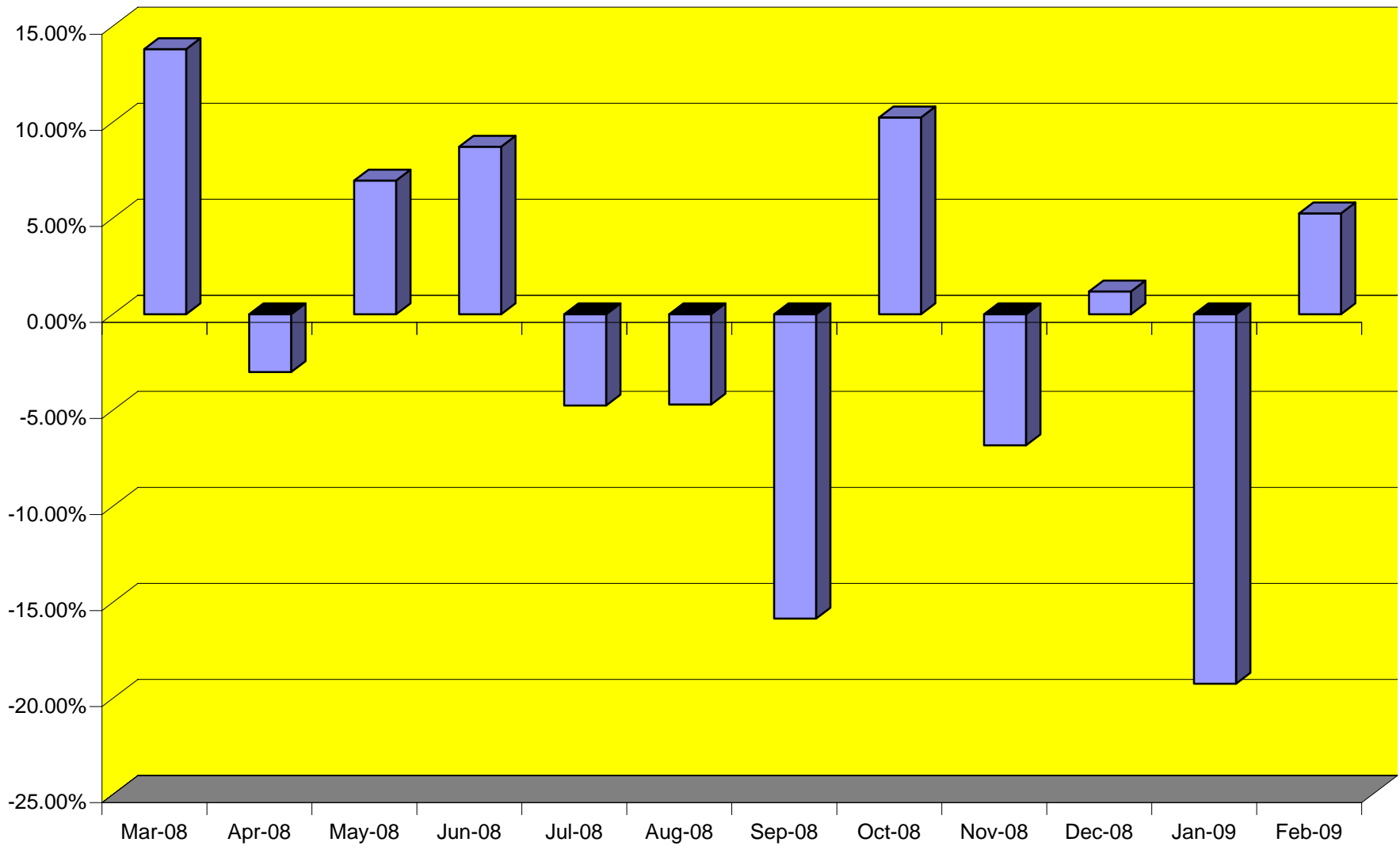
TOTAL CARGO POUNDAGE - AUSTIN, TEXAS



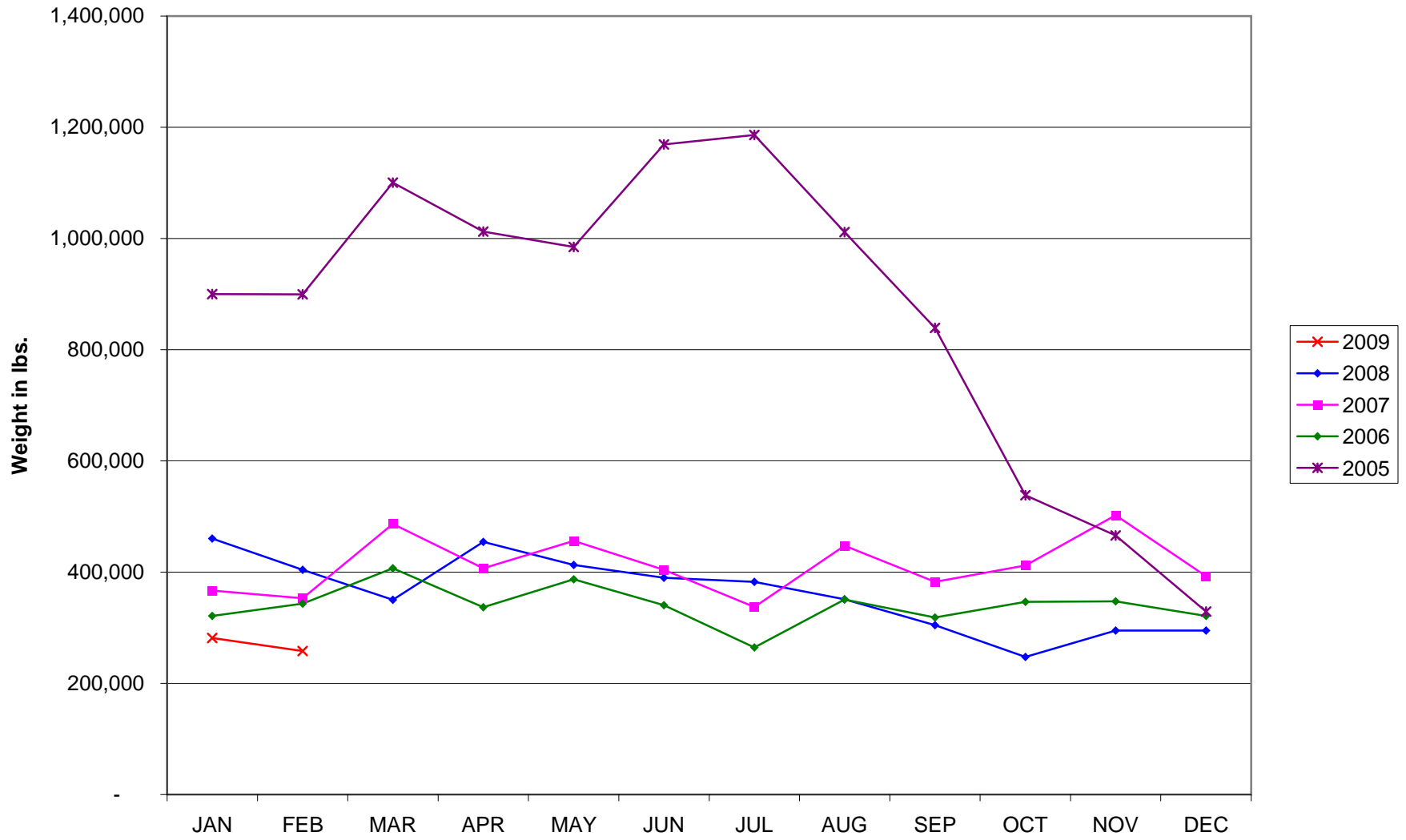
Average Daily Passengers



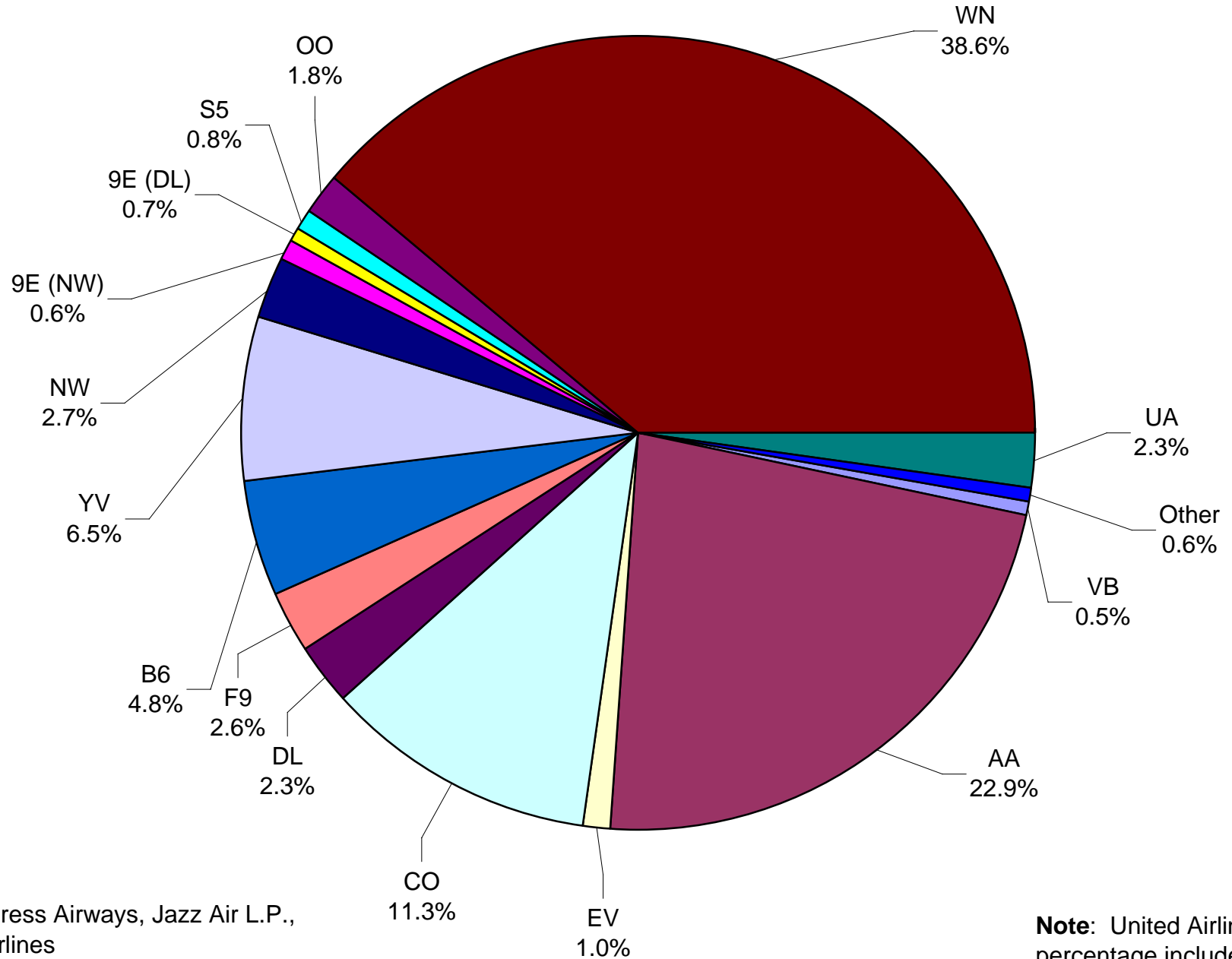
Monthly % Change in Average Daily Passengers



History of International Air Cargo



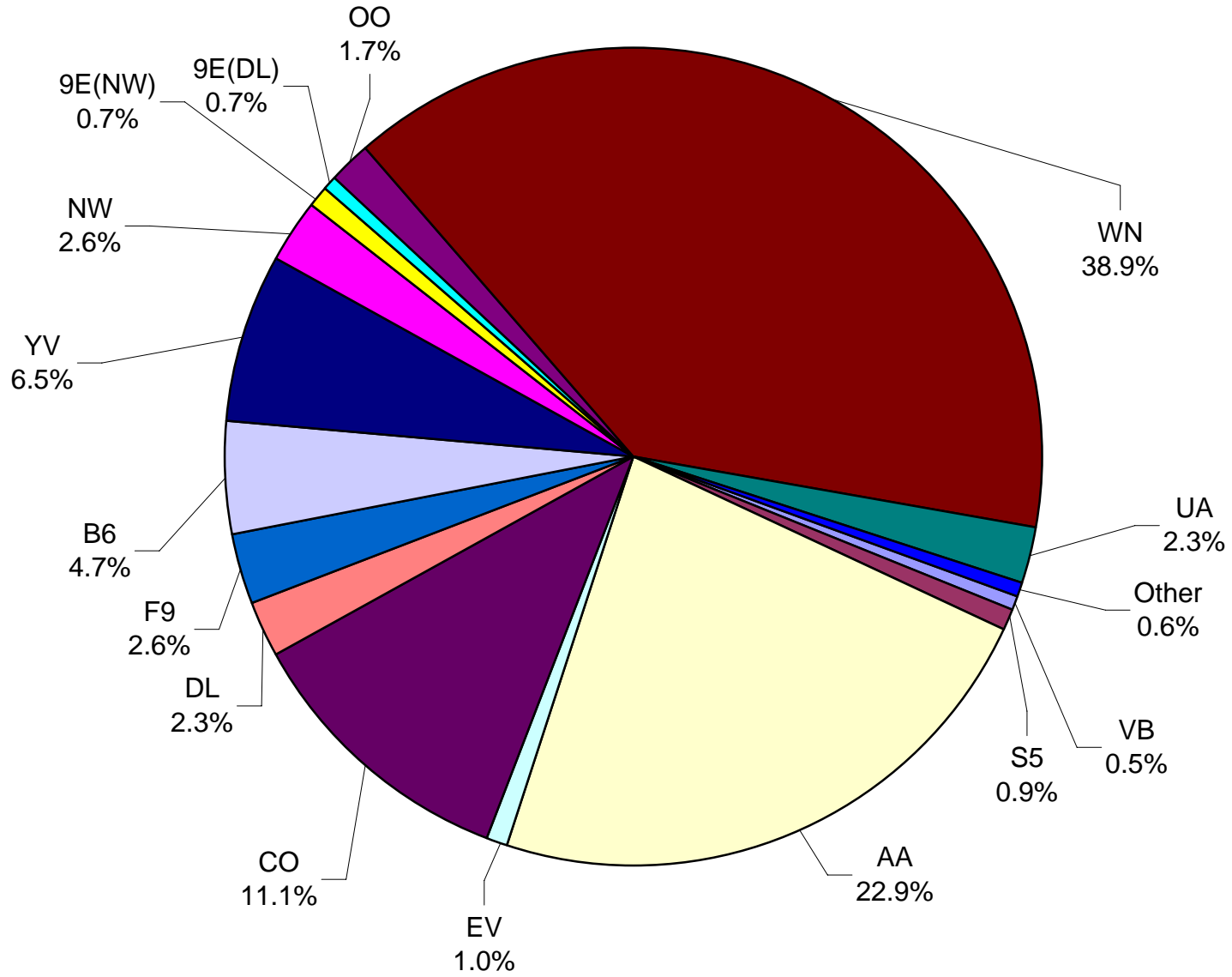
**Total Passengers
February 2009**



Other = Casino Express Airways, Jazz Air L.P., and Trans States Airlines

Note: United Airlines percentage includes sub-contractors.

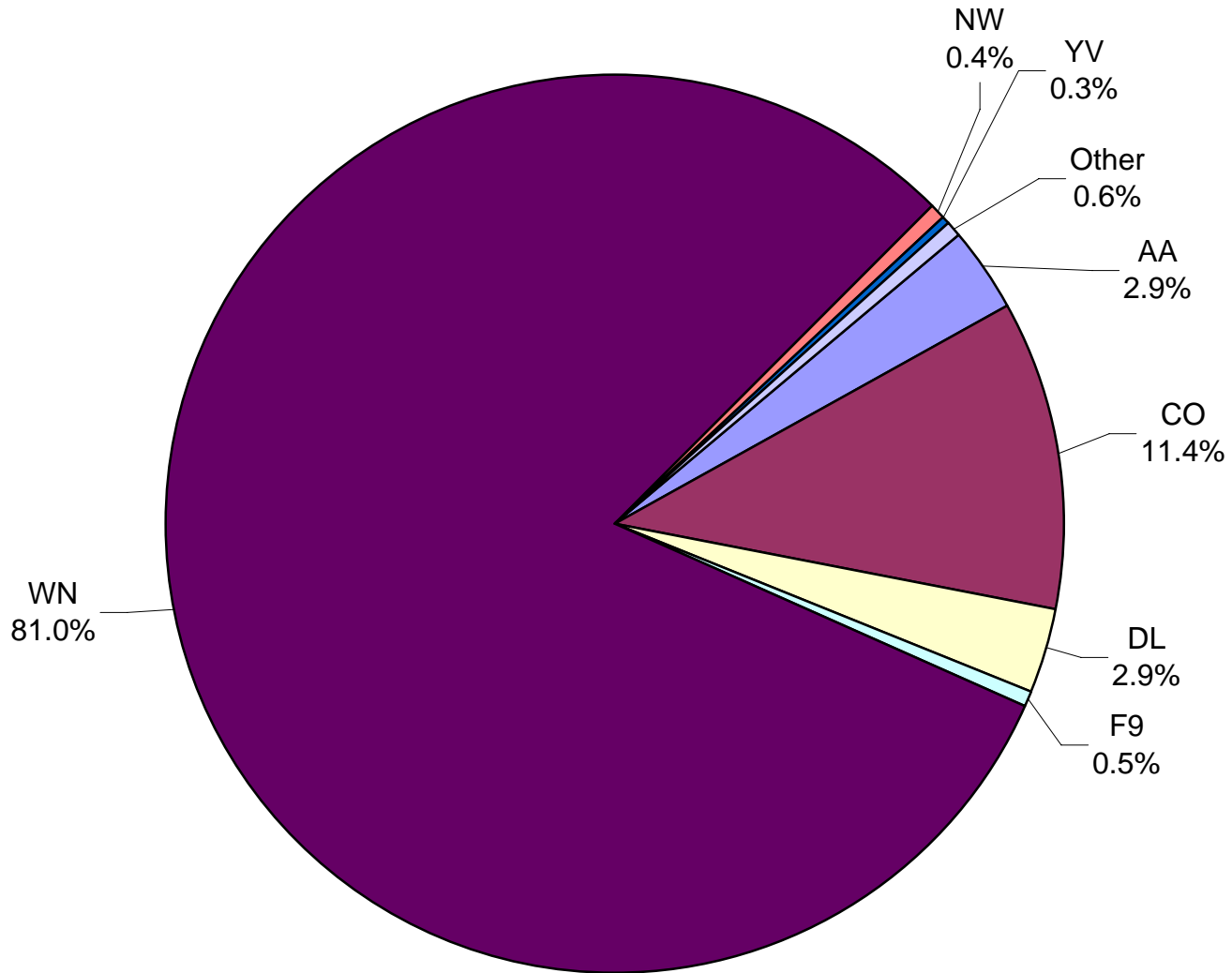
**All Passenger Carriers
Enplaned Revenue Passengers
February 2009**



Other = Casino Express Airways, Jazz Air LP, and Trans States Airlines Inc.

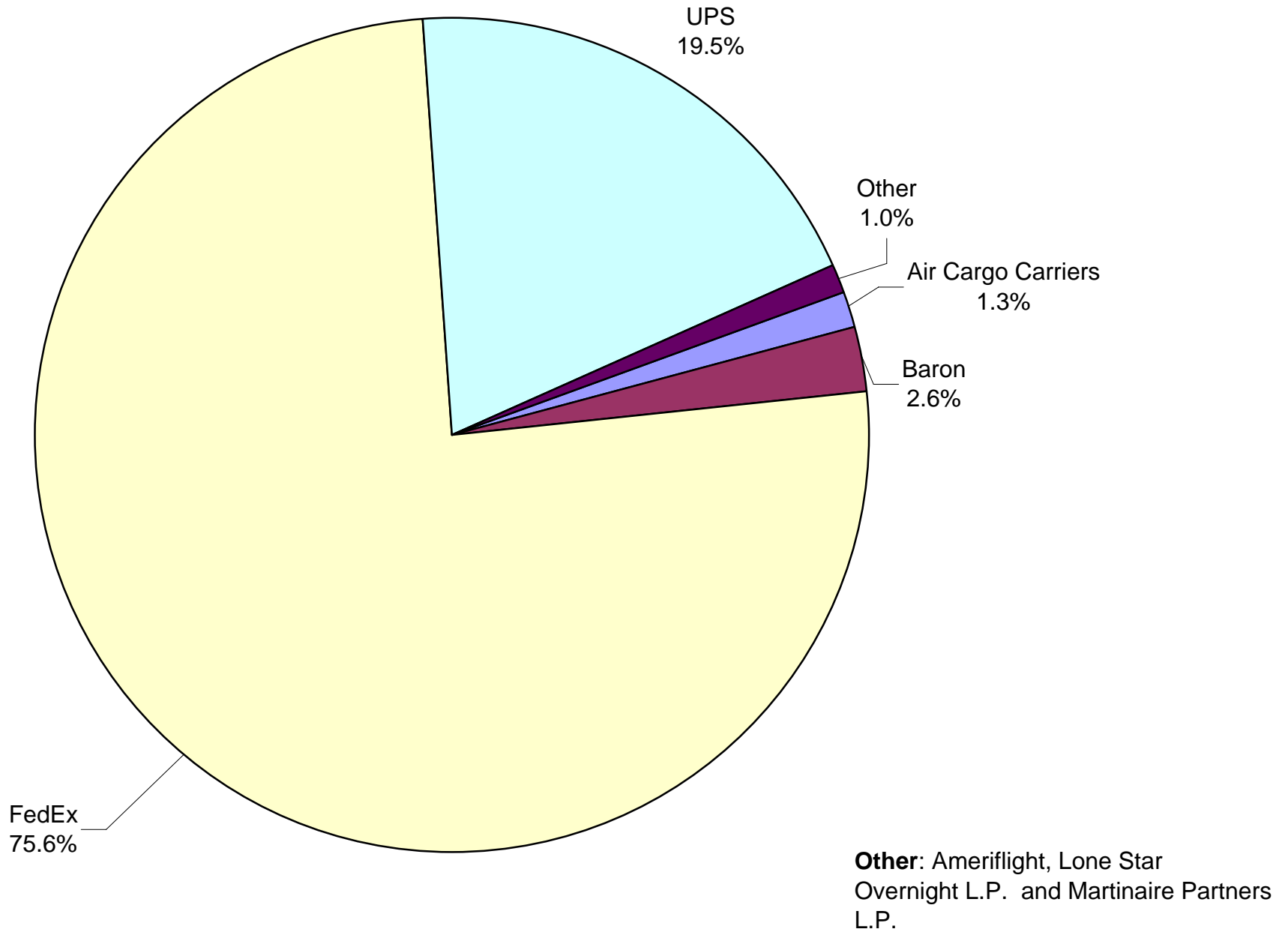
Note: United Airlines percentage includes sub-contractors.

**AUS Belly Freight Market Shares
February 2009**

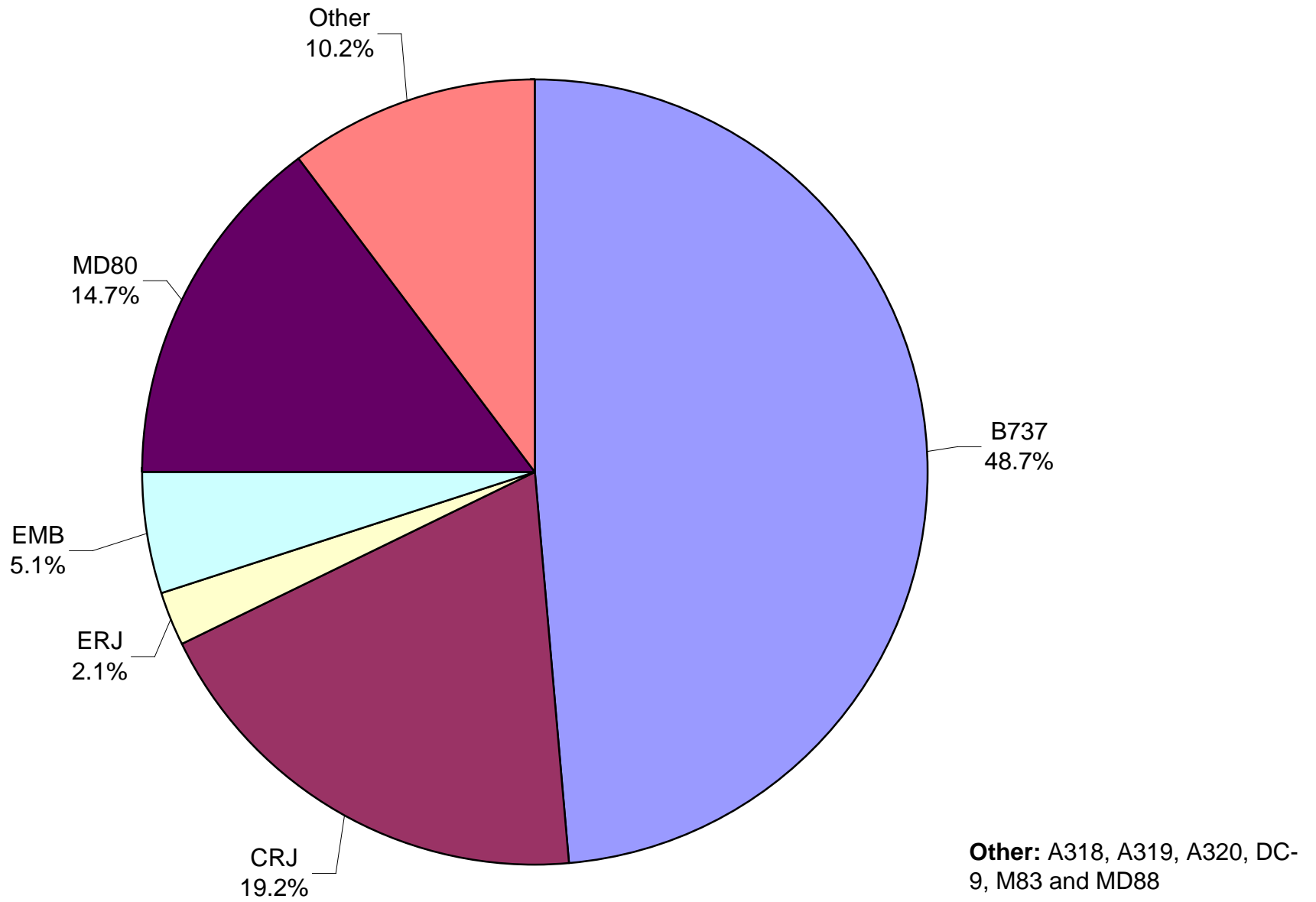


Other = Atlantic Southeast Airlines, Inc., Pinnacle Airlines Inc.(NW & DL), and United Airlines

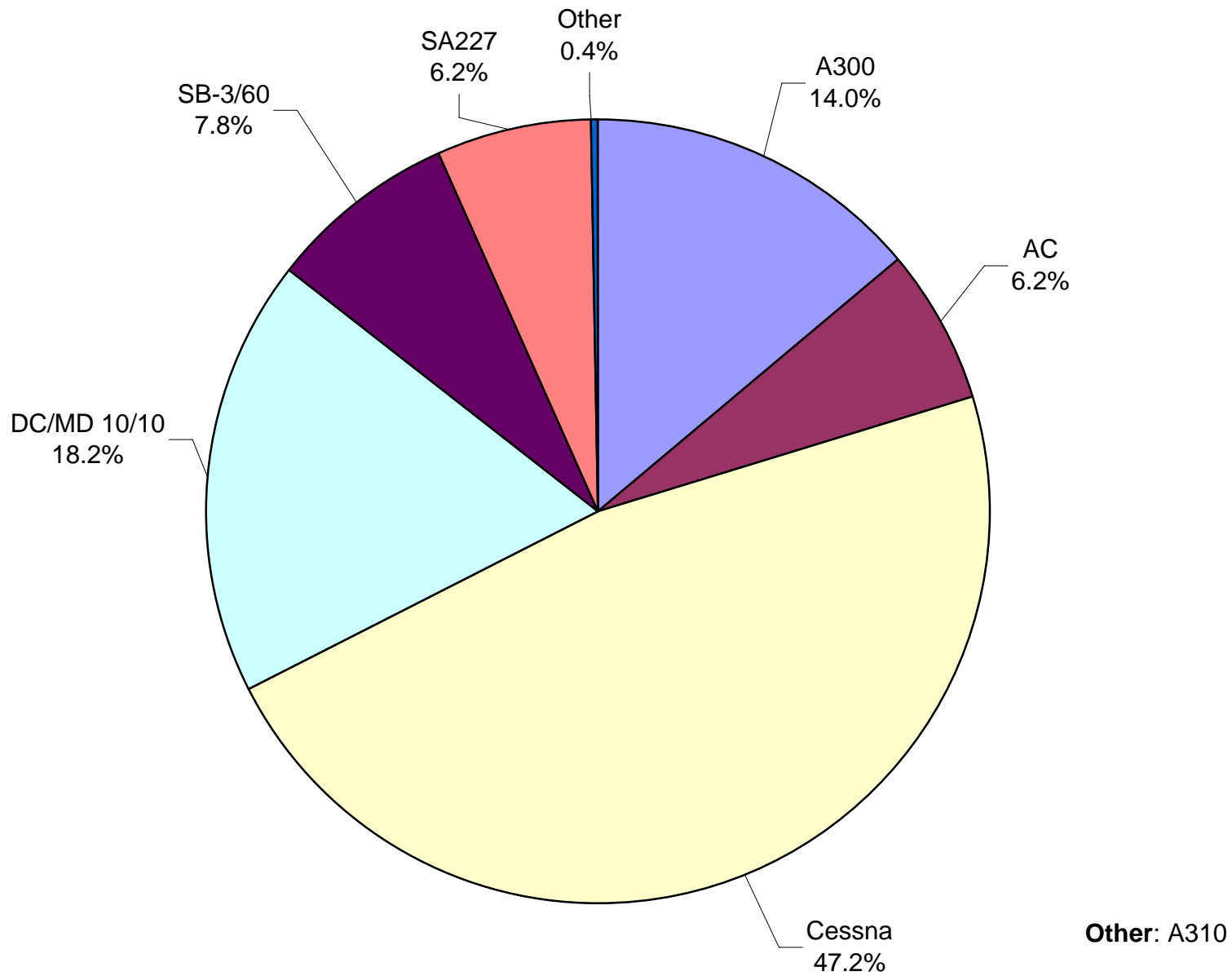
**Air Cargo Market Shares
February 2009**



**AUS Scheduled Passenger Aircraft Fleet Mix
February 2009**



**AUS Scheduled Cargo Aircraft Fleet Mix
February 2009**



Austin-Bergstrom International Airport

PAX Detail Report - February, 2009

Company	02/2009	02/2008	Period		YTD 2009	YTD 2008	YTD		2009 Share	2008 Share	Share Diff
			Difference	Change			Difference	Change			
Aero Mexico Airlines/Aerovias de Mexico, S.A. de C.V.	0	1,593	-1,593	-100.0	0	3,387	-3,387	-100.0	0.0	0.3	-0.3
Aeroenlaces Nacionales S.A. DE C.V./vivaAerobus	2,715	0	2,715	0.0	6,931	0	6,931	0.0	0.6	0.0	0.6
Allegiant Air	0	138	-138	-100.0	180	710	-530	-74.6	0.0	0.1	0.0
American Airlines, Inc	125,559	171,407	-45,848	-26.7	257,398	348,922	-91,524	-26.2	22.9	26.6	-3.7
Atlantic Southeast Airlines, Inc.	5,419	9,586	-4,167	-43.5	10,833	23,696	-12,863	-54.3	1.0	1.8	-0.8
Casino Express Airways	294	0	294	0.0	590	523	67	12.8	0.1	0.0	0.0
Chautauqua Airlines Inc.	0	2,055	-2,055	-100.0	0	2,055	-2,055	-100.0	0.0	0.2	-0.2
Continental Airlines	61,682	78,954	-17,272	-21.9	126,355	156,508	-30,153	-19.3	11.2	11.9	-0.7
Delta Airlines	12,512	27,589	-15,077	-54.6	28,826	49,217	-20,391	-41.4	2.6	3.8	-1.2
Delta Airlines/Pinnacle	3,969	0	3,969	0.0	10,699	0	10,699	0.0	1.0	0.0	1.0
Express Jet Airlines, Inc.	0	15,773	-15,773	-100.0	0	31,431	-31,431	-100.0	0.0	2.4	-2.4
Frontier Airlines DIP	14,017	0	14,017	0.0	28,237	0	28,237	0.0	2.5	0.0	2.5
Frontier Airlines, Inc. - Pre Bankruptcy	0	16,729	-16,729	-100.0	0	32,474	-32,474	-100.0	0.0	2.5	-2.5
GoJet Airlines d/b/a United Express	3,808	0	3,808	0.0	9,872	0	9,872	0.0	0.9	0.0	0.9
JAZZ Air LP	1,273	0	1,273	0.0	2,596	0	2,596	0.0	0.2	0.0	0.2
JetBlue Airways Corporation	26,356	16,651	9,705	58.3	61,640	33,997	27,643	81.3	5.5	2.6	2.9
Mesa Airlines Inc.	35,859	11,529	24,330	211.0	73,377	22,806	50,571	221.7	6.5	1.7	4.8
Midwest Airlines, Inc.	0	3,282	-3,282	-100.0	0	5,787	-5,787	-100.0	0.0	0.4	-0.4
MN Airlines, LLC d/b/a Sun Country	0	102	-102	-100.0	0	102	-102	-100.0	0.0	0.0	0.0
Northwest Airlines	14,629	10,387	4,242	40.8	28,533	22,203	6,330	28.5	2.5	1.7	0.8
Pace Airlines	0	0	0	0.0	122	0	122	0.0	0.0	0.0	0.0
Pinnacle Airlines, Inc. dba Northwest Airlink	3,402	6,663	-3,261	-48.9	9,070	13,831	-4,761	-34.4	0.8	1.1	-0.2
Shuttle America Corporation	4,326	7,735	-3,409	-44.1	9,971	18,312	-8,341	-45.5	0.9	1.4	-0.5
SkyWest Airlines, Inc	9,807	13,638	-3,831	-28.1	17,043	25,147	-8,104	-32.2	1.5	1.9	-0.4
Southwest Airlines	211,606	229,368	-17,762	-7.7	419,724	457,869	-38,145	-8.3	37.3	34.9	2.5
Trans States Airlines, Inc	1,840	0	1,840	0.0	1,856	0	1,856	0.0	0.2	0.0	0.2
United Airlines, Inc.	8,673	15,858	-7,185	-45.3	18,771	31,116	-12,345	-39.7	1.7	2.4	-0.7
US Airways Group, Inc.	0	15,579	-15,579	-100.0	1,279	32,339	-31,060	-96.0	0.1	2.5	-2.4
USA Jet Airlines, Inc.	0	16	-16	-100.0	0	16	-16	-100.0	0.0	0.0	0.0
Report Totals	547,746	654,632	-106,886	-16.3%	1,123,903	1,312,448	-188,545	-14.4%			

Statistics Included in Report:

Domestic Passengers:

Enplaned Revenue, Deplaned Revenue, Through Revenue, Enplaned Non-Revenue, Deplaned Non-Revenue, Through Non-Revenue

International Passenger:

Enplaned Revenue, Deplaned Revenue, Through Revenue, Enplaned Non-Revenue, Deplaned Non-Revenue, Through Non-Revenue, South Terminal-Int'l Enplaned Revenue, South Terminal-Int'l Deplaned Revenue, South Terminal-Int'l Through Revenue, South Terminal-Int'l Enplaned Non-Revenue, South Terminal-Int'l Deplaned Non-Revenue, South Terminal-Int'l Through Non-Revenue

Austin-Bergstrom International Airport

Summary Landing Report

Landing Type: Total

Month	2009		2008		2007		% Change 2009 - 2008		% Change 2008 - 2007	
	Count	Weight	Count	Weight	Count	Weight	Count	Weight	Count	Weight
January	4,170	470,373,445	4,995	508,563,011	4,269	461,169,144	-16.52%	-7.51%	17.01%	10.28%
February	3,797	422,422,704	4,707	477,510,902	4,084	433,092,352	-19.33%	-11.54%	15.25%	10.26%
March			5,057	511,086,453	4,693	498,304,509			7.76%	2.57%
April			4,853	498,467,860	4,659	485,924,900			4.16%	2.58%
May			5,213	542,161,220	5,116	524,923,078			1.90%	3.28%
June			5,252	551,158,994	5,006	521,808,372			4.91%	5.62%
July			5,097	553,506,814	5,245	543,679,941			-2.82%	1.81%
August			5,006	550,514,204	5,453	559,884,838			-8.20%	-1.67%
September			4,261	481,994,314	5,107	513,882,056			-16.57%	-6.21%
October			4,550	518,348,013	5,373	539,788,979			-15.32%	-3.97%
November			4,200	480,660,098	5,053	515,341,963			-16.88%	-6.73%
December			4,322	492,152,692	4,997	511,272,858			-13.51%	-3.74%
Totals for Selected Period	7,967	892,796,149	9,702	986,073,913	8,353	894,261,496	-17.88%	-9.46%	16.15%	10.27%
Yearly Totals	7,967	892,796,149	57,513	6,166,124,575	59,055	6,109,072,990			-2.61%	0.93%